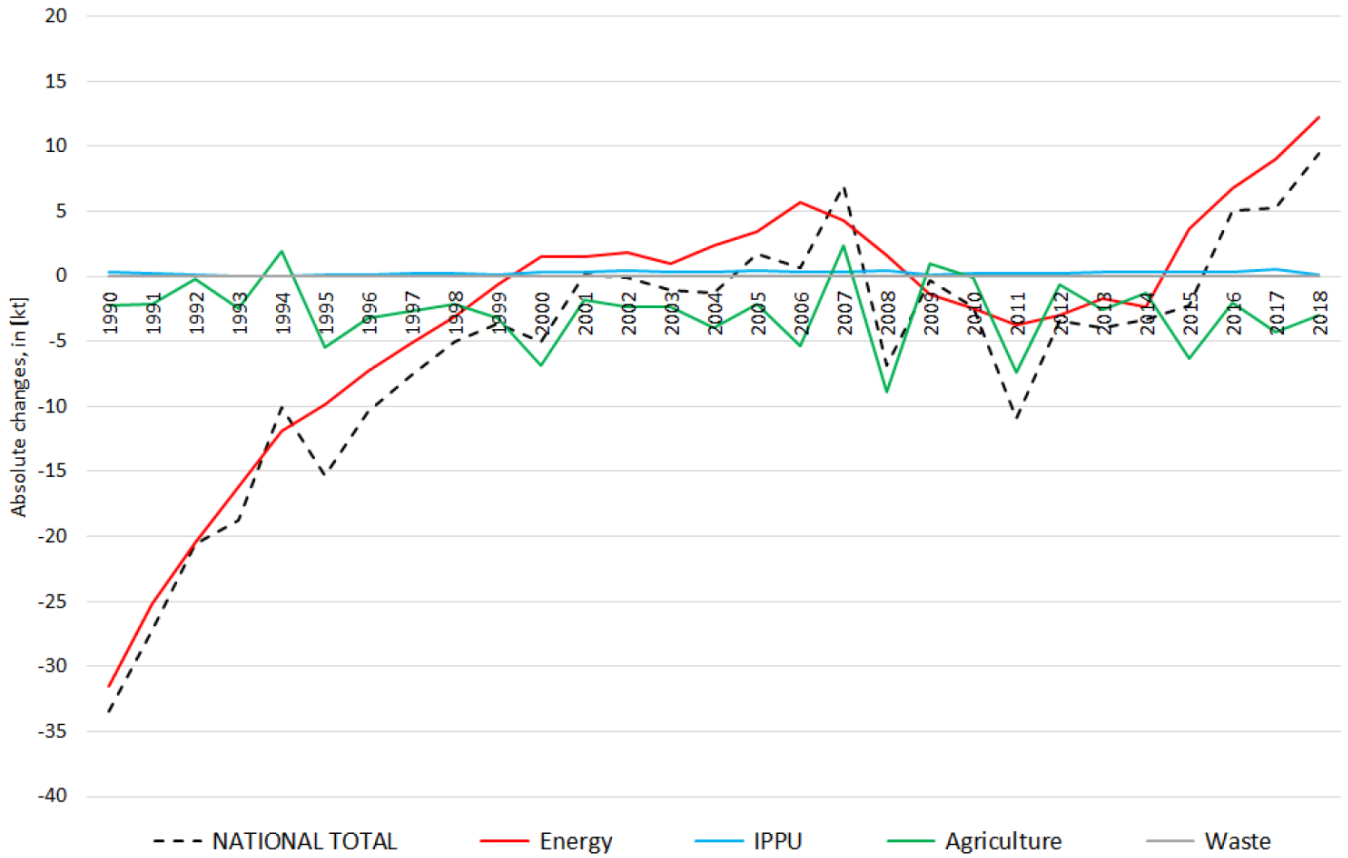
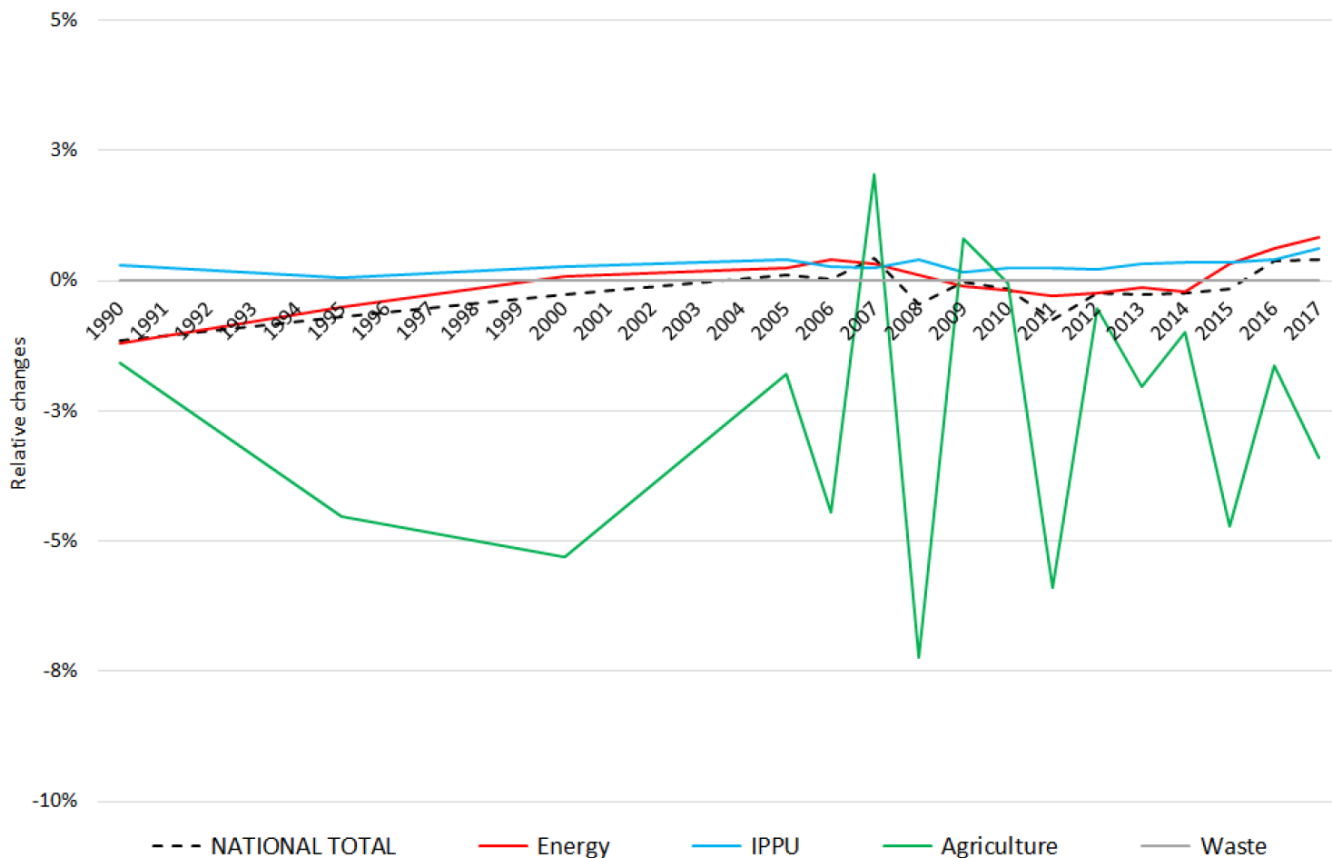


Recalculations - Nitrogen Oxides

Revision of NO_x emissions over time

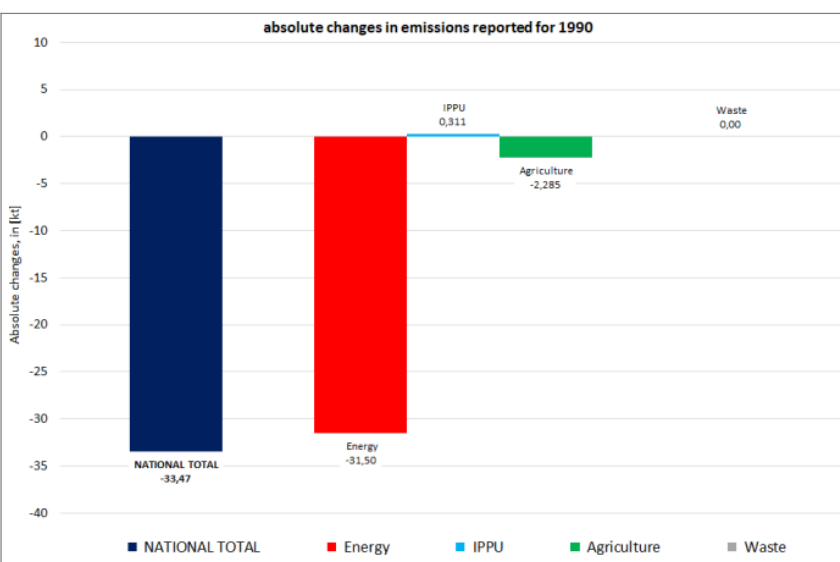




The changes within the **National Total reported for 1990 (-34 kt | -1.19 %)** are dominated by changes in **NFRs 1.A.3.b i, 1.A.3.b ii and 1.A.3.b iii** together with less significant revisions throughout NFRs 1, 2 and 3. Here, the strongest relative change occurs for **NFR 2.G with minus 58 %**.

Table 1: Changes of emission estimates 1990

NFR Code	Submission		Difference		Reasoning
	2020	2021	[kt]	relative	
NATIONAL TOTAL	2.884,38	2.850,05	-34,33	-1,19%	see description and reasoning in: sub-category chapters
NFR 1 - Energy	2.634,24	2.601,88	-32,36	-1,23%	sub-category chapters
1.A.2.g vii	49,60	50,23	0,63	1,28%	here
1.A.3.a i(i)	3,88	3,94	0,06	1,54%	here
1.A.3.a ii(i)	2,85	2,80	-0,05	-1,90%	here



absolute changes in emissions reported for 1990					Submission 2020	Submission 2021	Difference	Reasoning
NFR Code	[kt]			relative	see description and reasoning in: sub-category chapters			
NATIONAL TOTAL	2.884,38	2.850,05	-34,33	-1,19%	sub-category chapters			
NFR 1 - Energy	2.634,24	2.601,88	-32,36	-1,23%	sub-category chapters			
1.A.3.b i	808,22	765,68	-42,54	-5,26%	here			
1.A.3.b ii	41,49	31,49	-10,00	-24,11%	here			
1.A.3.b iii	485,89	506,00	20,11	4,14%	here			
1.A.3.b iv	2,61	2,45	-0,16	-6,18%	here			
1.A.4.a ii	11,52	11,60	0,08	0,67%	here			
1.A.4.b ii	0,07	0,06	-0,01	-8,44%	here			
1.A.4.c ii	49,78	49,31	-0,475	-0,95%	here			
NFR 2 - IPPU	106,06	106,37	0,31	0,29%	sub-category chapters			
2.C.3	NA	0,74	0,74		here			
2.G	0,74	0,31	-0,43	-58,05%	here			
NFR 3 - Agriculture	143,55	141,27	-2,28	-1,59%	sub-category chapters			
3.B.1.a	0,72	0,67	-0,05	-7,07%	here			
3.B.1.b	0,79	0,70	-0,09	-11,65%	here			
3.B.4.g iii	0,00337	0,00339	0,00002	0,48%	here			
3.D.a.1	85,31	86,57	1,256	1,47%	here			
3.D.a.2.a	46,65	43,46	-3,19	-6,84%	here			
3.D.a.3	8,65	8,44	-0,21	-2,42%	here			
NFR 5 - Waste	0,53	0,53	0,00	0,00%				
NFR 6 - Other	NA							

The changes within the **National Total reported for 2017 (+100.56 kt | +8.47 %)** are dominated by changes in **NFRs 1.A.3.b i, 1.A.3.b ii and 1.A.3.b iii** together with less significant revisions throughout NFRs 1, 2 and 3.

Here, the strongest relative change occurs for **NFR 1.B.2.a iv (+824,150 %)**.

Table 2: Changes of emission estimates 2017

absolute changes in emissions reported for 2018				
Absolute changes, in [kt]	=			
	= Submission 2019		= Submission 2020	
= NFR Code	= [kt]		= Difference	= Reasoning
~ NATIONAL TOTAL	> 1,187.50	> 1,288.07	> 100.56	> 8.47% < see description and reasoning in: < sub-category chapters
NFR 1 - Energy	> 972.26	> 1,073.00	> 100.74	> 10.36% < sub-category chapters
1.A.1.a	> 257.85	> 251.15	> -6.69	> -2.60% < here]
1.A.1.b	> 16.88	> 14.64	> -2.24	> -13.26% < here]
1.A.1.c	> 12.51	> 12.24	> -0.27	> -2.17% < here]
1.A.2.a	> 4.26	> 4.21	> -0.05	> -1.10% < here]
1.A.2.b	> 1.25	> 1.00	> -0.24	> -19.61% < here]
1.A.2.e	> 0.22	> 0.19	> -0.02	> -11.33% < here]
1.A.2.g vii	> 13.44	> 13.47	> 0.03	> 0.25% < here]
1.A.2.g viii	> 75.07	> 72.79	> -2.28	> -3.04% < here]
1.A.3.a i(i)	> 10.98	> 11.44	> 0.46	> 4.17% < here]
1.A.3.a ii(i)	> 2.81	> 2.36	> -0.45	> -15.87% < here]
1.A.3.b i	> 244.99	> 313.87	> 68.88	> 28.12% < here]
1.A.3.b ii	> 32.64	> 65.78	> 33.14	> 102% < here]
1.A.3.b iii	> 122.05	> 140.10	> 18.05	> 14.79% < here]
1.A.3.b iv	> 2.74	> 1.74	> -1.00	> -36.58% < here]
1.A.3.c	> 11.78	> 9.30	> -2.47	> -21.00% < here]
1.A.3.d ii	> 27.06	> 26.11	> -0.95	> -3.52% < here]
1.A.4.a i	> 19.34	> 21.31	> 1.96	> 10.15% < here]
1.A.4.a ii	> 10.32	> 10.34	> 0.02	> 0.17% < here]
1.A.4.b i	> 57.94	> 55.04	> -2.90	> -5.01% < here]
1.A.4.b ii	> 0.5137	> 0.5135	> -0.0002	> -0.04% < here]
1.A.4.c i	> 9.54	> 6.38	> -3.16	> -33.10% < here]
1.A.4.c ii	> 30.65	> 30.82	> 0.16	> 0.54% < here]
1.A.4.c iii	> 1.3267	> 1.3264	> -0.0003	> -0.02% < here]
1.A.5.a	> 0.27	> 0.26	> -0.01	> -2.14% < here]
1.A.5.b	> 3.44	> 3.36	> -0.08	> -2.43% < here]
1.B.2.a iv	> 0.0001	> 0.7674	> 0.7673	> 824,150% < here]
1.B.2.c	> 0.33	> 0.43	> 0.10	> 29.02% < here]
NFR 2 - IPPU	> 88.67	> 88.68	> 0.01	> 0.02% < sub-category chapters
2.A.2	> 4.123	> 4.122	> -0.002	> -0.04% < here]
2.A.6	> 2.49	> 2.13	> -0.36	> -14.51% < here]
2.G	> 0.434	> 0.435	> 0.001	> 0.13% < here]
2.H.1	> 2.78	> 3.01	> 0.23	> 8.27% < here]
NFR 3 - Agriculture	> 125.79	> 125.60	> -0.20	> -0.16% < sub-category chapters

3.B.1.a	> 0.523	> 0.522	> -0.001	> -0.19%	< here]
3.B.1.b	> 0.574	> 0.581	> 0.007	> 1.15%	< here]
3.B.2	> 0.011	> 0.011	> 0.000	> 0.00%	< here]
3.B.3	> 0.3468	> 0.3464	> -0.0004	> -0.11%	< here]
3.B.4.g i	> 0.0171	> 0.0176	> 0.0005	> 3.06%	< here]
3.B.4.g ii	> 0.0174	> 0.0177	> 0.0003	> 1.85%	< here]
3.B.4.g iii	> 0.0103	> 0.0109	> 0.0006	> 5.34%	< here]
3.B.4.g iv	> 0.0023	> 0.0020	> -0.0002	> -9.49%	< here]
3.D.a.2.a	> 40.38	> 40.45	> 0.07	> 0.17%	< here]
3.D.a.2.b	> 0.74	> 0.56	> -0.18	> -24.29%	< here]
3.D.a.2.c	> 11.91	> 11.72	> -0.20	> -1.64%	< here]
3.D.a.3	> 5.64	> 5.75	> 0.11	> 1.88%	< here]
3.l	> 0.178	> 0.176	> -0.002	> -1.23%	<
NFR 5 - Waste	> 0.79	> 0.79	> 0.00	> 0.00%	<
	NFR 6 - Other				= NA