

2.B.7 - Soda Ash Production

Short description

Category Code	Method					AD					EF				
2.B.7	T1					NS					C				
Key Category	SO ₂	NO _x	NH ₃	NM VOC	CO	BC	Pb	Hg	Cd	Diox	PAH	HCB	TSP	PM ₁₀	PM _{2.5}
2.B.7	-	-	-/-	-	-	-	-	-	-	-	-	-	-/-	-	-

In Germany, soda ash is produced in three production facilities, all of which use the Solvay process.

Methodology

Activity data

The Federal Statistical Office determines the total amounts of soda ash produced in Germany, but only regarding confidentiality.

Emission factor

Emission factors (for TSP and NH₃) are confidential regarding activity data restrictions.

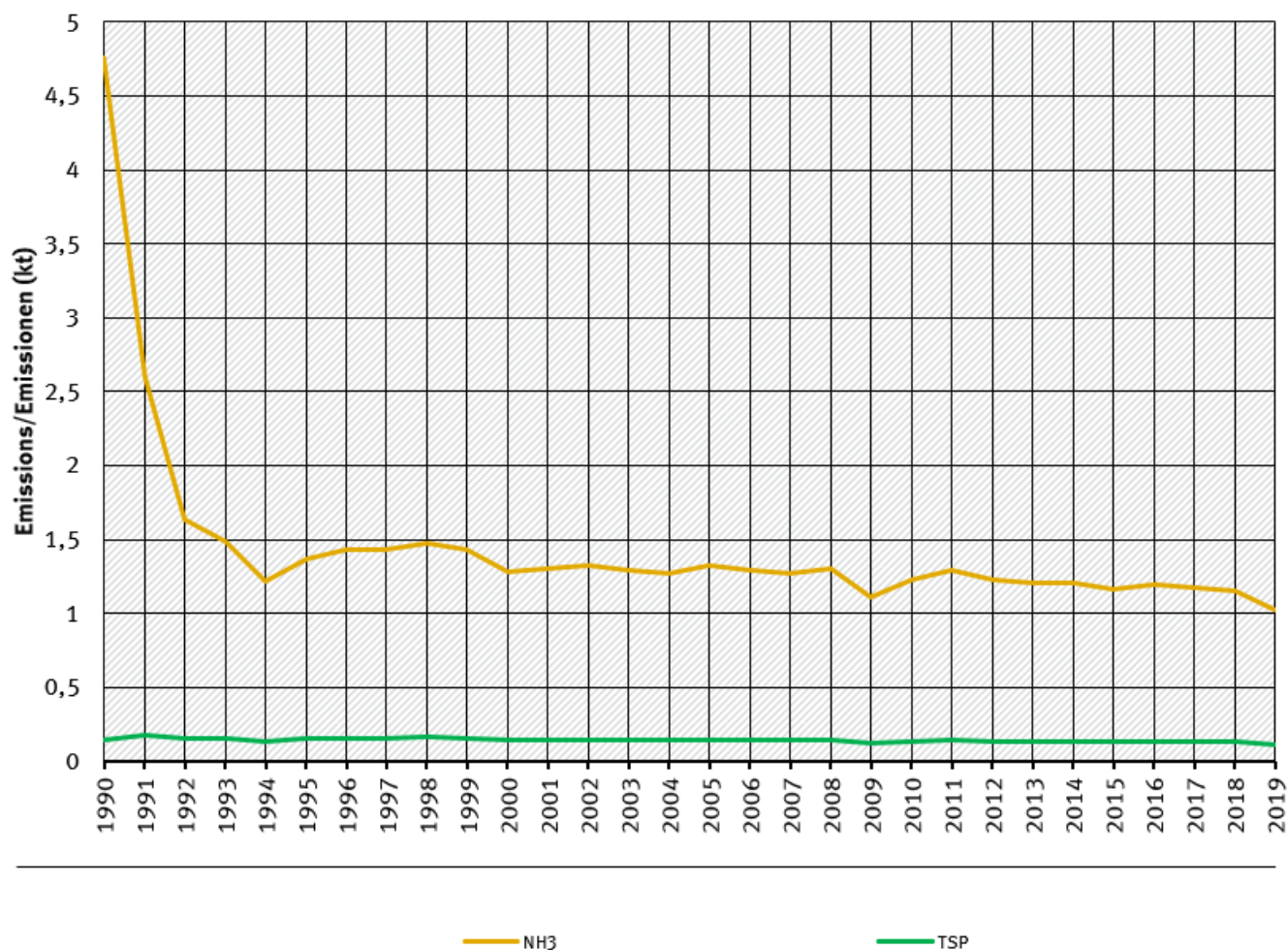
Discussion of emission Trends

The steep reduction especially for NH₃ at the beginning of the 1990s was due to closures in the eastern German industrial sector. For year 1990 for eastern Germany is in case of TSP pointed out the summary figure for the Chemical Industry as a whole. However, after 1992, emissions of NH₃ occur at a lower level.

All trends in emissions correspond to trends of emission factors. No rising trends are to identify.

trends of emissions of soda production

Emissions by pollutant / Emissionen nach Schadstoff



* Base Year for PM = 1995 / Basisjahr für Feinstäube (PM) ist 1995

German Emission Inventory (09.02.2021)

Emission trends in NFR 2.B.7

Recalculations

With EF and AD remaining unrevised, recalculations were not necessary.



For pollutant-specific information on recalculated emission estimates for Base Year and 2018, please see the pollutant specific recalculation tables following [chapter 8.1 - Recalculations](#).

Planned improvements

At the moment, no category-specific improvements are planned.

