

## 2.A.1 - Cement Production

### Short description

Category Code	Method					AD					EF				
2.A.1	T1					AS					CS				
Key Category	SO <sub>2</sub>	NO <sub>x</sub>	NH <sub>3</sub>	NMVOC	CO	BC	Pb	Hg	Cd	Diox	PAH <sub>3</sub>	HCB	TSP	PM <sub>10</sub>	PM <sub>2.5</sub>
2.A.1	-/-	-/-	-/-	-/-	-	-	-/-	L/-	-/-	-/-	-/-	-	-/-	-/-	-/-

**T** = key source by Trend **L** = key source by Level

Methods	
<b>D</b>	Default
<b>RA</b>	Reference Approach
<b>T1</b>	Tier 1 / Simple Methodology *
<b>T2</b>	Tier 2*
<b>T3</b>	Tier 3 / Detailed Methodology *
<b>C</b>	CORINAIR
<b>CS</b>	Country Specific
<b>M</b>	Model

\* as described in the EMEP/CORINAIR Emission Inventory Guidebook - 2007, in the group specific chapters.

AD - Data Source for Activity Data	
<b>NS</b>	National Statistics
<b>RS</b>	Regional Statistics
<b>IS</b>	International Statistics
<b>PS</b>	Plant Specific data
<b>AS</b>	Associations, business organisations
<b>Q</b>	specific questionnaires, surveys
EF - Emission Factors	
<b>D</b>	Default (EMEP Guidebook)
<b>C</b>	Confidential
<b>CS</b>	Country Specific
<b>PS</b>	Plant Specific data

The remarks below refer to production of cement clinkers and clinker grinding (only relevant as a source for particulate matter). The clinker-burning with intensive use of energy emits climate-relevant gases. CO<sub>2</sub> accounts for the great majority of these emissions, but heavy metals are important too.

## Methodology

### Activity data

Activity data are determined via summation of figures for individual plants (until 1994, activity data were determined on the basis of data of the official member association BDZ). As of 1995, following optimisation of data collection within the association, activity data were compiled by the [German Cement Works Association](#) (VDZ), and by its [VDZ research institute](#) (located in Düsseldorf), via surveys of German cement plants. The data are supplemented with data for plants that are not BDZ members (in part, also VDZ estimates).

For internal reasons within the association, the data for the years from 2015 onwards is not available from the VDZ. Instead, the cement clinker specification is based on aggregated plant specific ETS-data of DEHSt. A comparison for the years 2005-2014 showed a good correlation between information of the European Emissions Trading (ETS) and the cement clinker production data of the VDZ. So, the cement clinker information from 2015 onwards is based on aggregated data of ETS. All companies are required to report production data within the framework of CO<sub>2</sub>-ETS. The EU monitoring guidelines for emissions trading specify a maximum accuracy of 2.5%. Furthermore CKD was taken into account. According to the VDZ, the share of bypass dust in clinker production was between 1% and 2% between 2009 and 2016. For the inclusion as an activity rate, it can be assumed that the share was 2% from 2009 onwards, for time before only 1%.

## Emission factors

The emission factors used for emissions calculation are based on figures from research projects as well as from expert judgements.

In the German cement industry, dust separated from clinker burning exhaust gas is returned to the burning process. As a result, there is no need to take account of significant losses of particles via the exhaust-gas pathway. - On the other hand, particulate matter emissions occur during clinker grinding.

EF for Hg is based on aggregated figures for individual plants of PRTR-reporting. The trend estimation is based on an expert judgement and derived from TSP trend.

Table 1: Overview of applied emission factors

<b>Pollutant</b>	<b>Name of Category</b>	<b>EF</b>	<b>Unit</b>	<b>Trend</b>
<b>NO<sub>x</sub></b>	clinker burning	0.5	kg/t	falling
<b>SO<sub>2</sub></b>	clinker burning	0.25	kg/t	falling
<b>NM VOC</b>	clinker burning	0.046	kg/t	constant
<b>NH<sub>3</sub></b>	clinker burning	0.044	kg/t	falling
<b>Hg</b>	clinker burning	0.022	g/t	falling
<b>Pb</b>	clinker burning	0.016	g/t	falling
<b>Cd</b>	clinker burning	0.004	g/t	falling
<b>PCB</b>	clinker burning	28.0	µg/t	constant
<b>PCDD</b>	clinker burning	0.040	µg/t	constant
<b>B(a)P</b>	clinker burning	1.0	mg/t	constant
<b>PAH</b>	clinker burning	240	mg/t	constant
<b>TSP</b>	<i>clinker grinding</i>	<i>0.046</i>	<i>kg/t</i>	<i>falling</i>
<b>PM<sub>10</sub></b>	<i>clinker grinding</i>	<i>0.041</i>	<i>kg/t</i>	<i>falling</i>
<b>PM<sub>2.5</sub></b>	<i>clinker grinding</i>	<i>0.037</i>	<i>kg/t</i>	<i>falling</i>

Emissions of HCB are not applicable according to a research result. The table of EF is related to two

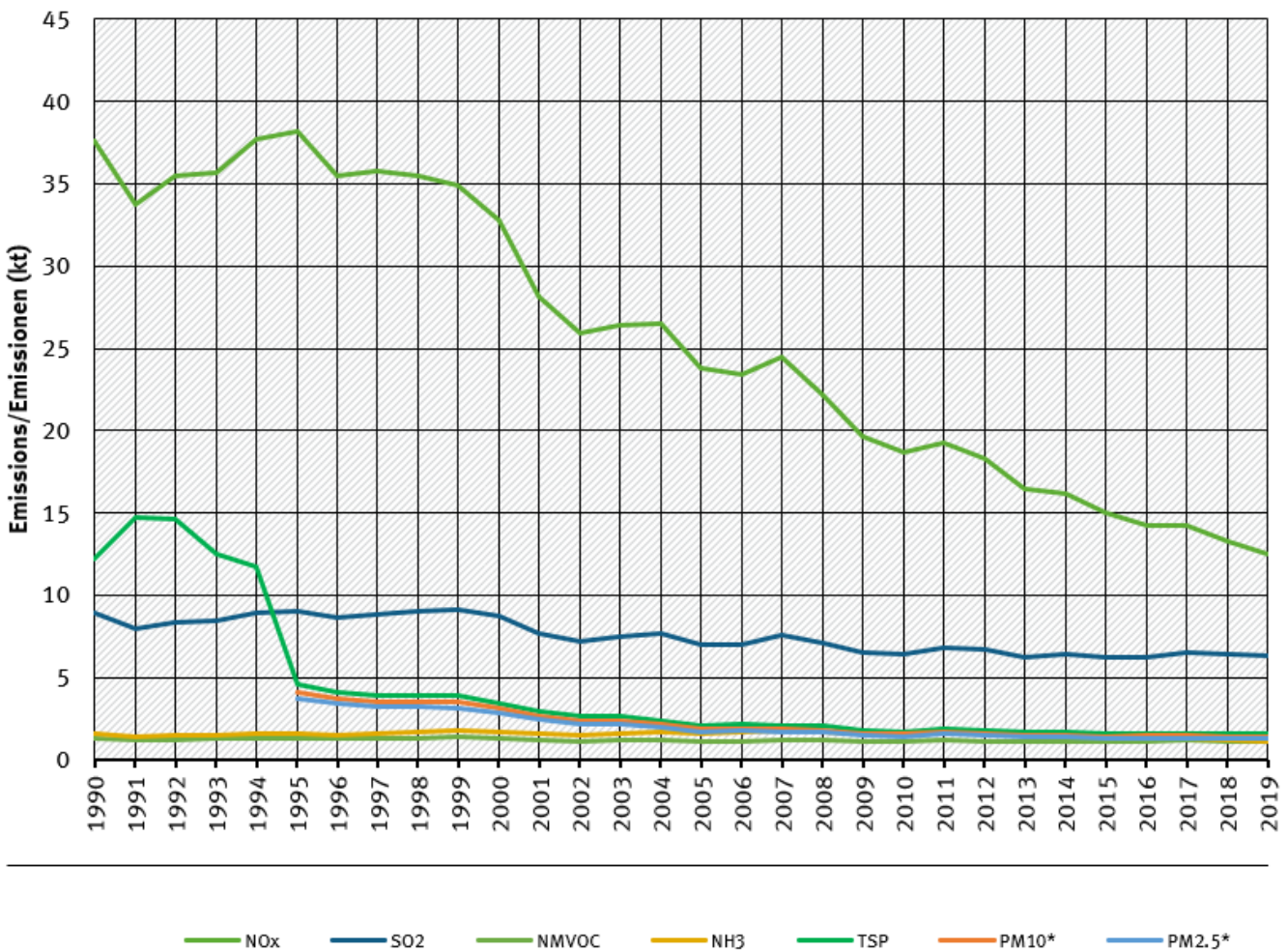
different AD sets. For purposes of the most pollutants the AD is burnt clinker. For purposes of emission estimation of PM the AD is grinded clinker (included further materials as domestic burnt clinker). NFR tables could provide only one AD (burnt clinker).

## Trends in emissions

All trends in emissions correspond to trends of emission factors in table above. No rising trends are to identify.

### trends of emissions of cement production

Emissions by pollutant / Emissionen nach Schadstoff



\* Base Year for PM = 1995 / Basisjahr für Feinstäube (PM) ist 1995

### Emission trends in NFR 2.A.1

## Recalculations

With **activity data** and **emission factors** remaining unrevised, no recalculations have been carried out compared to last year's submission.



For pollutant-specific information on recalculated emission estimates for Base Year and 2018, please see the pollutant specific recalculation tables following [chapter 8.1 - Recalculations](#).

## Planned improvements

For purposes of updating the EF project has started in 2019, but results are planned not before 2021<sup>1)</sup>.

---

<sup>1)</sup> ReFoPlan FKZ - 3719 52 1010: „Überarbeitung der Emissionsfaktoren für Luftschadstoffe in den Branchen Zementklinkerproduktion und Glasherstellung“