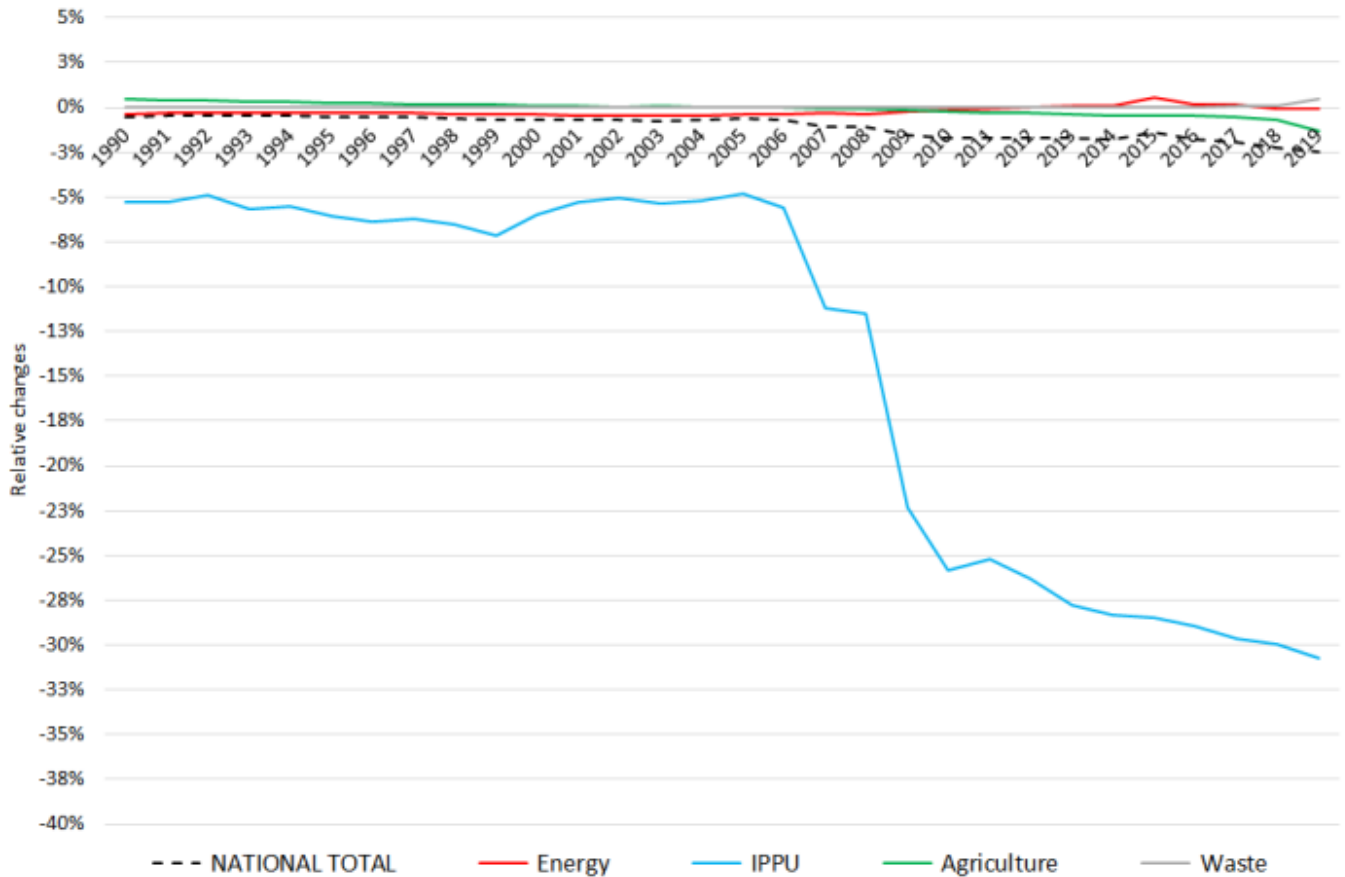
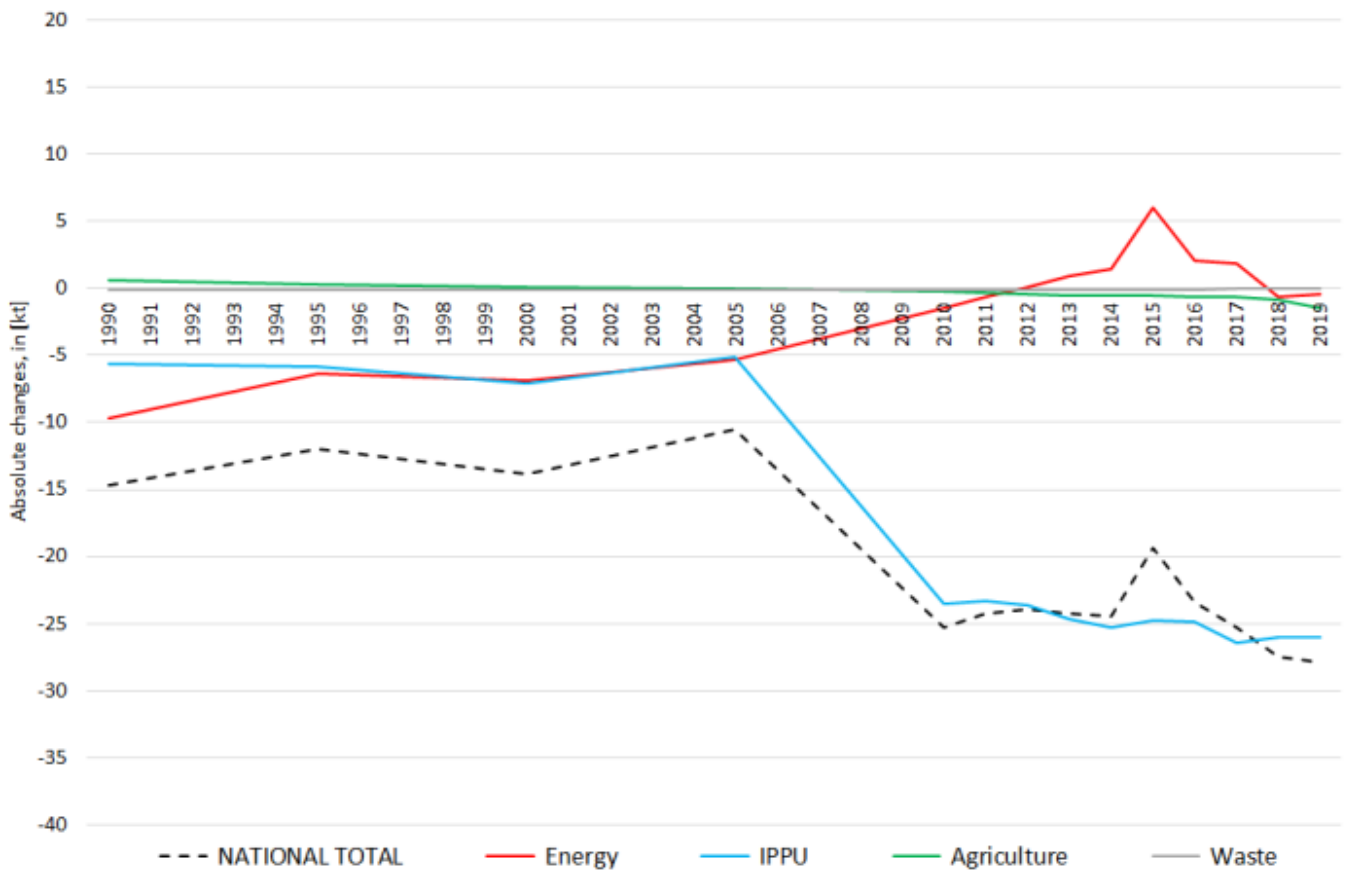


Recalculations - Nitrogen Oxides

Revision of NO_x emissions over time:



Changes within the **National Total reported for 1990 (-14.72 kt | -0.52 %)** are dominated by changes in NFRs **1.A.3.d ii** (-9.73 kt) and **2.B.2** (-5.68 kt) together with less significant revisions throughout NFRs 1, 2 and 3.

The most significant percental change occurs for **NFR 1.A.4.c iii with minus 52 %**.

Table 1: Changes of emission estimates 1990

absolute changes in emissions reported for 1990					Submission 2021	Submission 2022	Difference	Reasoning
NFR Code	[kt]			relative	see description and reasoning in:			
NATIONAL TOTAL	2.850,05	2.835,33	-14,72	-0,52%	sub-category chapters			
NFR 1 - Energy	2.601,88	2.592,15	-9,73	-0,37%	sub-category chapters			
1.A.3.a i(i)	3,94	3,94	0,00	-0,02%	here			
1.A.3.a ii(i)	2,80	2,78	-0,01	-0,38%	here			
1.A.3.b iii	506,00	505,99	-0,01	0,00%	here			
1.A.3.c	45,05	45,32	0,26	0,59%	here			
1.A.3.d ii	60,65	51,47	-9,18	-15,13%	here			
1.A.4.b ii	0,06	0,08	0,02	30,65%	here			
1.A.4.c iii	0,81	0,39	-0,42	-51,95%	here			
1.A.5.b	41,60	41,20	-0,40	-0,96%	here			
NFR 2 - IPPU	106,37	100,73	-5,64	-5,30%	sub-category chapters			
2.B.2	16,98	11,30	-5,68	-33,44%	2.B.2 - Nitric Acid Production			
2.B.6	NE	0,04	0,04		2.B.6 - Titanium Dioxide Production			
NFR 3 - Agriculture	141,27	141,92	0,65	0,46%	sub-category chapters			
3.B.1.b	0,6958	0,6896	-0,01	-0,89%	here			
3.B.3	0,26	0,28	0,02	6,48%	here			
3.B.4.g i	0,01443	0,01427	0,00	-1,145%	here			
3.B.4.g iv	0,00251	0,00248	-0,00003	-1,33%	here			
3.D.a.2.a	43,46	44,14	0,68	1,58%	here			
3.D.a.3	8,44	8,40	-0,04	-0,49%	here			
NFR 5 - Waste	0,53	0,53	0,00	0,00%				
NFR 6 - Other	NA							

The small changes within the **National Total reported for 2019 (+8.22 kt | +0.68 %)** are dominated by changes in **NFRs 1 and 3**. Here, the most significant relative change occurs for **NFR 2.G with minus 49 %**.

Table 2: Changes of emission estimates 2019

absolute changes in emissions reported for 2018		Submission 2021	Submission 2022	Difference		Reasoning
NFR Sector		[kt]			relative	see description and reasoning in:
NATIONAL TOTAL		1.136,79	1.108,82	-27,97	-2,46%	sub-category chapters
NFR 1 - Energy		938,97	938,49	-0,48	-0,05%	sub-category chapters
1.A.1.a		208,92	208,57	-0,34	-0,16%	here
1.A.1.b		16,66	16,66	0,01	0,05%	here
1.A.1.c		12,01	13,38	1,37	11,43%	here
1.A.2.a		3,95	4,15	0,21	5,25%	here
1.A.2.b		1,01	0,98	-0,03	-2,88%	here
1.A.2.e		0,21	0,21	0,00	-0,67%	here
1.A.2.f		IE	IE	#WERT!	#WERT!	here
1.A.2.g vii		14,81	14,74	-0,07	-0,47%	here
1.A.2.g viii		68,68	67,08	-1,61	-2,34%	here
1.A.3.a i(i)		11,77	11,93	0,16	1,37%	here
1.A.3.a ii(i)		2,61	2,65	0,03	1,28%	here
1.A.3.b i		275,95	271,75	-4,20	-1,52%	here
1.A.3.b ii		56,31	55,69	-0,61	-1,09%	here
1.A.3.b iii		106,05	106,65	0,60	0,56%	here
1.A.3.b iv		1,61	1,60	-0,02	-1,10%	here
1.A.3.c		7,33	7,99	0,66	8,94%	here
1.A.3.d ii		24,70	24,75	0,05	0,22%	here
1.A.4.a i		20,65	20,43	-0,22	-1,06%	here
1.A.4.a ii		7,96	7,92	-0,04	-0,55%	here
1.A.4.b i		56,94	60,05	3,11	5,47%	here
1.A.4.b ii		0,4913	0,5745	0,08	16,94%	here
1.A.4.c i		6,03	7,01	0,98	16,21%	here
1.A.4.c ii		26,87	26,87	0,00	0,00%	here
1.A.4.c iii		0,5584	0,3768	-0,18	-32,53%	here
1.A.5.a		0,22	0,23	0,01	4,92%	here
1.A.5.b		3,52	3,10	-0,43	-12,09%	here
1.B.2.a iv		0,7171	0,7172	0,0001	0%	
NFR 2 - IPPU		84,76	58,71	-26,05	-30,73%	sub-category chapters
2.A.1		12,49	12,49	0,00	0,00%	here
2.A.2		3,843	3,843	0,000	0,00%	here
2.A.3		11,14	10,67	-0,47	-4,20%	here
2.A.5.a		NA	NA	#WERT!	#WERT!	here
2.A.5.b		NA	NA	#WERT!	#WERT!	here
2.A.5.c		NA	NA	#WERT!	#WERT!	here
2.A.6		2,13	2,13	0,00	0,04%	here
2.B.1		2,95	2,95	0,00	0,00%	here
2.B.2		26,69	1,07	-25,62	-96,00%	here
2.B.3		0,13	0,13	0,00	0,00%	here
2.B.5		NA	NA	#WERT!	#WERT!	here
2.B.6		NE	0,04	#WERT!	#WERT!	here
2.B.7		NA	NA	#WERT!	#WERT!	here
2.B.10.a		NA	NA	#WERT!	#WERT!	here
2.B.10.b		NA	NA	#WERT!	#WERT!	here
2.C.1		21,12	21,12	0,00	0,00%	here

absolute changes in emissions reported for 2018					
	Submission 2021	Submission 2022	Difference		Reasoning
NFR Sector	[kt]			relative	see description and reasoning in:
NATIONAL TOTAL	1.136,79	1.108,82	-27,97	-2,46%	sub-category chapters
NFR 1 - Energy	938,97	938,49	-0,48	-0,05%	sub-category chapters
2.C.2	NE	NE	#WERT!	#WERT!	here
2.C.3	0,51	0,51	0,53	104,34%	here
2.C.4	NA	NA	#WERT!	#WERT!	here
2.H.1	2,95	2,94	0,00	-0,11%	here
NFR 3 - Agriculture	112,24	110,79	-1,44	-1,29%	sub-category chapters
3.B.1.a	0,489	0,507	0,017	3,52%	here
3.B.1.b	0,487	0,515	0,029	5,88%	here
3.B.3	0,3276	0,2616	-0,0660	-20,14%	here
3.B.4.d	0,00187	0,00191	0,00004	2,35%	here
3.B.4.e	0,0362	0,0386	0,0024	6,67%	here
3.B.4.g i	0,0180	0,0182	0,0003	1,46%	here
3.B.4.g ii	0,0179	0,0139	-0,0039	-21,88%	here
3.B.4.g iii	0,0108	0,0100	-0,0007	-6,78%	here
3.B.4.g iv	0,00202	0,00205	0,00002	1,06%	here
3.D.a.1	55,97	55,34	-0,62	-1,11%	here
3.D.a.2.a	37,54	37,05	-0,49	-1,30%	here
3.D.a.2.b	0,51	0,56	0,05	10,17%	here
3.D.a.2.c	11,55	11,56	0,01	0,08%	here
3.D.a.3	5,10	4,73	-0,37	-7,21%	here
3.I	0,172	0,169	-0,003	-1,86%	here
NFR 5 - Waste	0,826	0,830	0,004	0,50%	sub-category chapters
5.C.2	0,283	0,288	0,004	1,44%	here
NFR 6 - Other	NA				