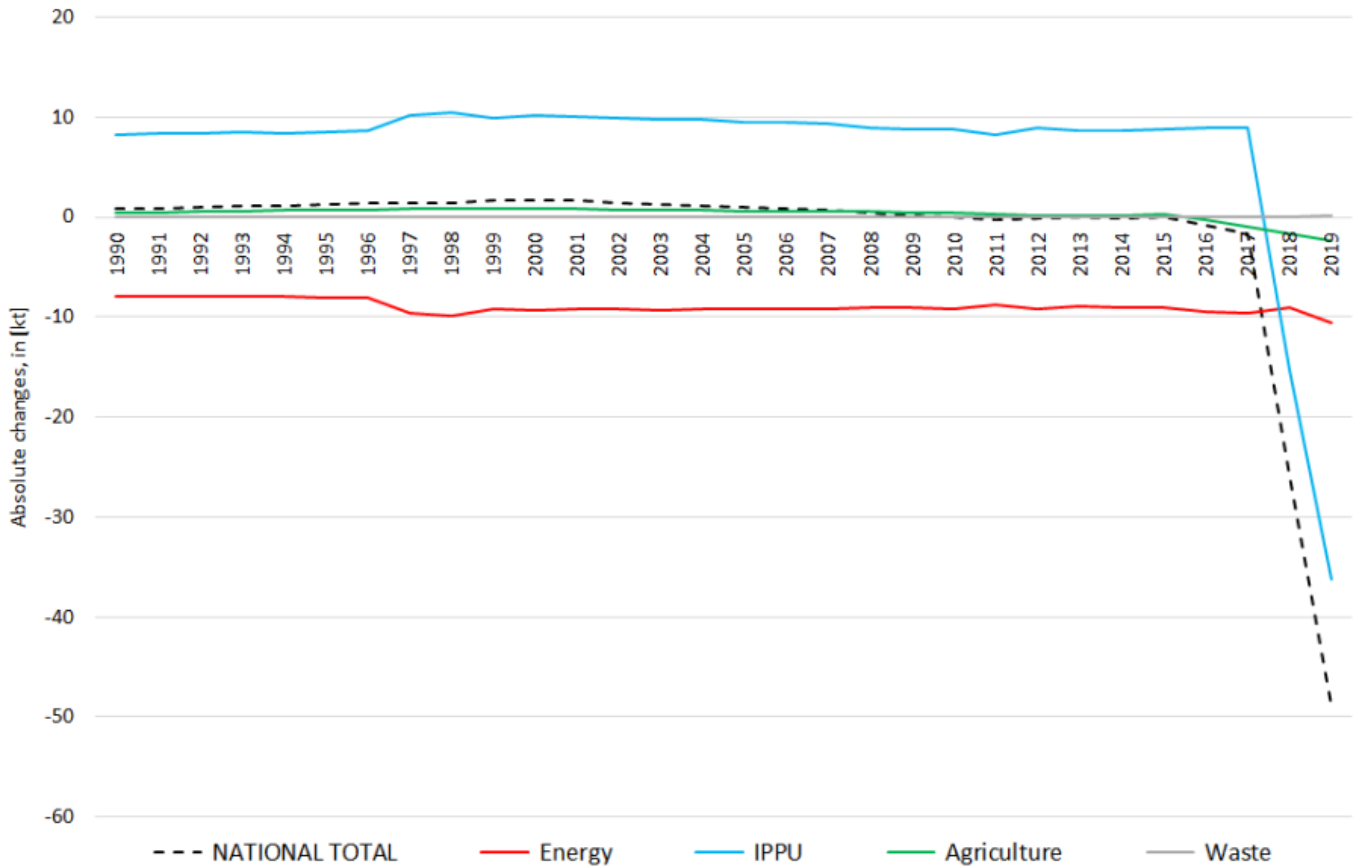
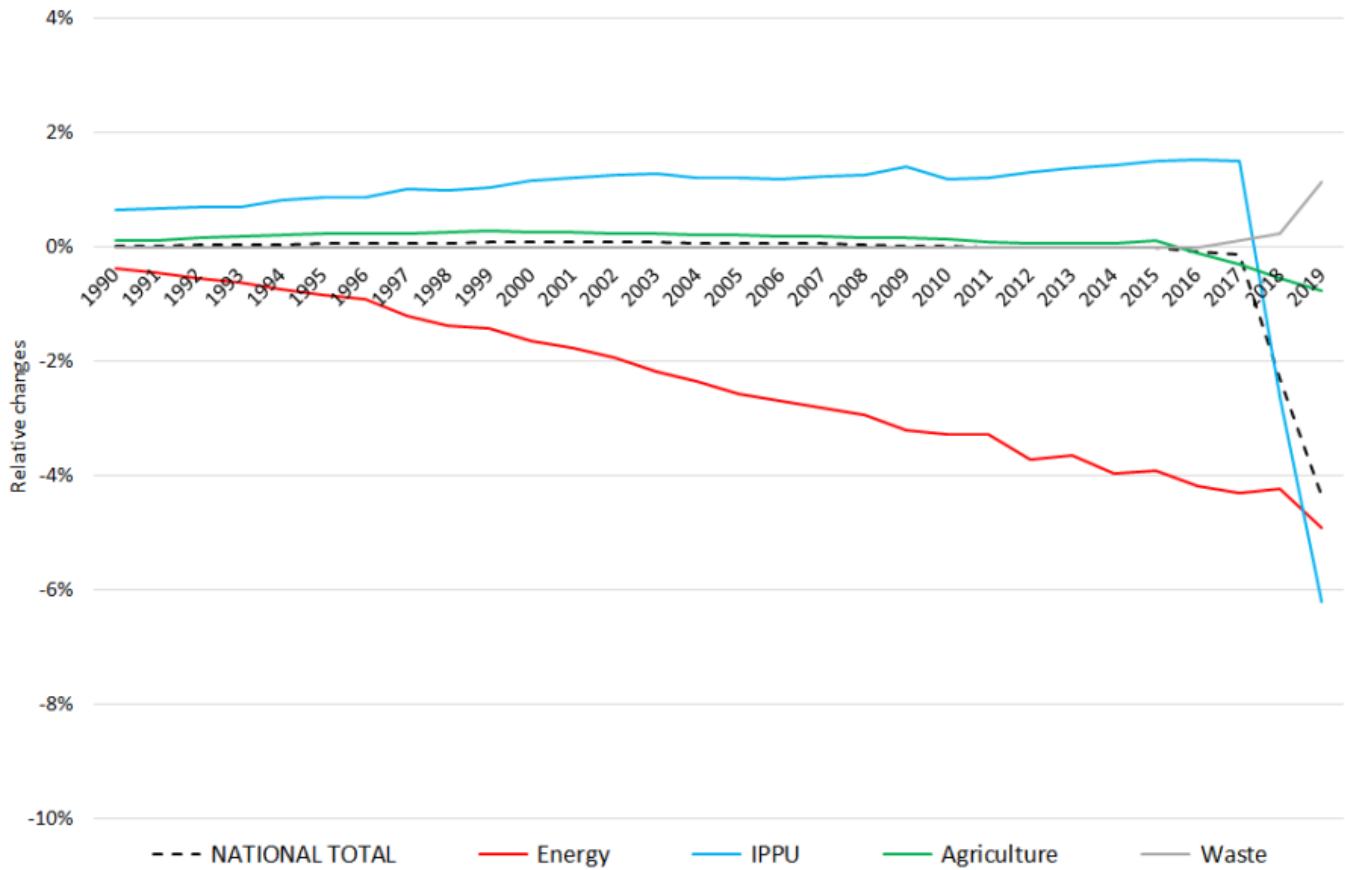


# Recalculations - Non-Methane Volatile Organic Compounds

Revision of NMVOC emissions over time





The significant changes within the **National Total reported for 1990 (+594 kt | +17.26 %)** are dominated by increased emission estimates from **NFRs 1.A.3.b i, ii, iii and 1.A.3.b v as well as 3.B.1.a and b** and newly implemented emissions in **NFRs 5.A and 5.C.2**.  
In **NFR 2 - IPPU**, emissions from 2.D.3.a have been re-allocated to **NFRs 2.D.3.f, h and i** with no impact on the sector's total emissions.  
Due to newly implemented emission estimates, the strongest relative change occurs for **NFR 5 with +30,040%**.

Table 1: Changes in emission estimates for 1990

^ ^ ^

Changes within the **National Total reported for 2018 (+96.66 kt | +9.04 %)** are dominated by revisions in **NFRs 3.B.1.a and b, 5.A and 5.C.2**.  
In addition, several changes occur throughout **NFRs 1 and 2**.  
Due to newly implemented emission estimates, the strongest relative change occurs for **NFR 5 with +13,301%**.

Table 2: Changes in emission estimates for 2018