

2.B.7 - Soda Ash Production

Short description

Category Code	Method					AD					EF				
2.B.7	T1					NS					C				
Key Category	SO ₂	NO _x	NH ₃	NM VOC	CO	BC	Pb	Hg	Cd	Diox	PAH	HCB	TSP	PM ₁₀	PM _{2.5}
2.B.7	-	-	-/-	-	-	-	-	-	-	-	-	-	-/-	-	-

T = key source by Trend **L** = key source by Level

Methods	
D	Default
RA	Reference Approach
T1	Tier 1 / Simple Methodology *
T2	Tier 2*
T3	Tier 3 / Detailed Methodology *
C	CORINAIR
CS	Country Specific
M	Model
* as described in the EMEP/CORINAIR Emission Inventory Guidebook - 2007, in the group specific chapters.	
AD - Data Source for Activity Data	
NS	National Statistics
RS	Regional Statistics
IS	International Statistics
PS	Plant Specific data
AS	Associations, business organisations
Q	specific questionnaires, surveys
EF - Emission Factors	
D	Default (EMEP Guidebook)
C	Confidential
CS	Country Specific
PS	Plant Specific data

In Germany, soda ash is produced in three production facilities, all of which use the Solvay process.

Methodology

Activity data

The Federal Statistical Office determines the total amounts of soda ash produced in Germany, but only regarding confidentiality.

Emission factor

Emission factors (for TSP and NH₃) are confidential regarding activity data restrictions.

Discussion of emission Trends

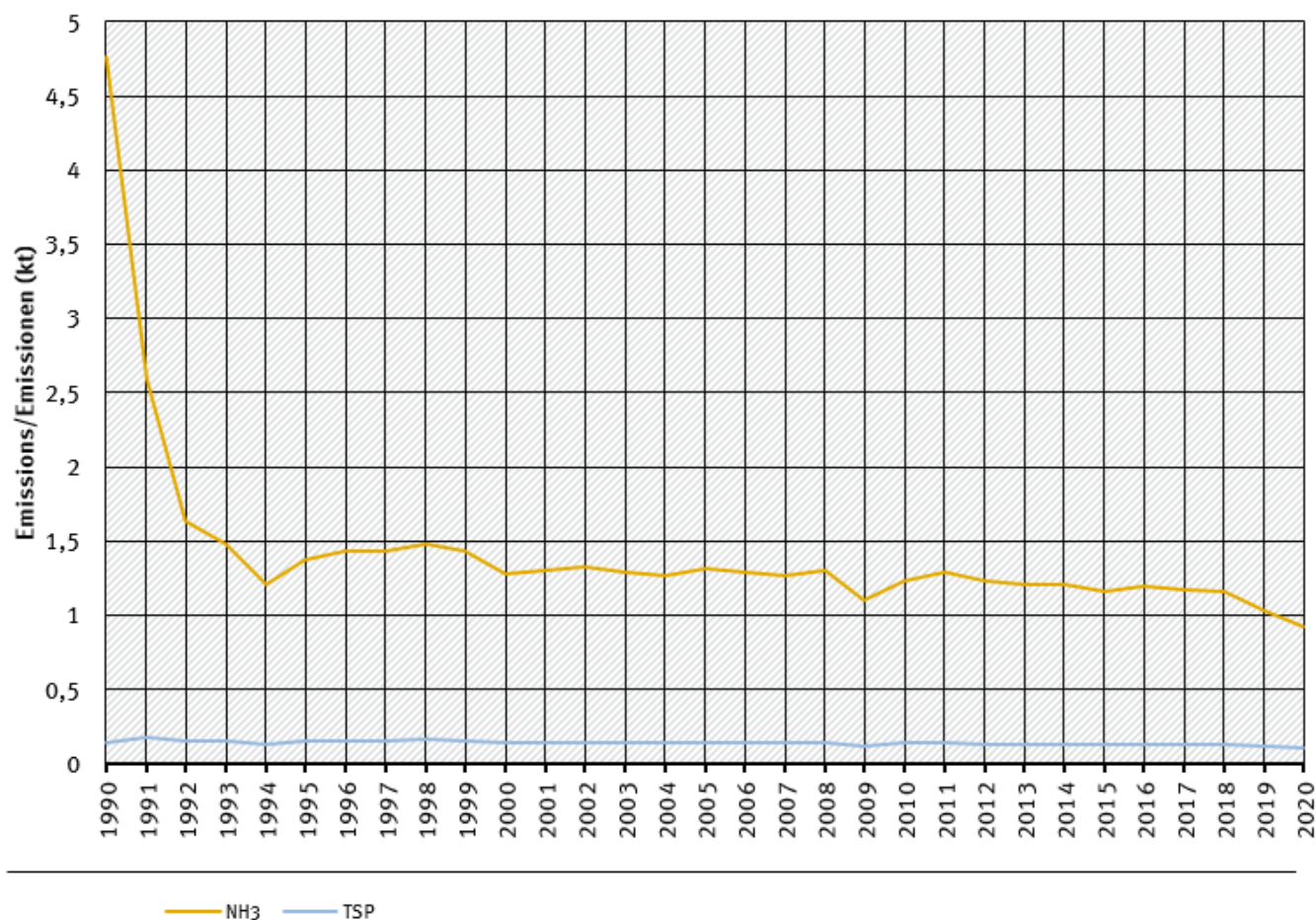
The steep reduction especially for NH₃ at the beginning of the 1990s was due to closures in the eastern German industrial sector. For year 1990 for eastern Germany is in case of TSP pointed out the summary figure for the Chemical Industry as a

whole. However, after 1992, emissions of NH_3 occur at a lower level.

All trends in emissions correspond to trends of emission factors. No rising trends are to identify.

trends of emissions of soda industry

Emissions by pollutant / Emissionen nach Schadstoff



* Base Year for PM = 1995 / Basisjahr für Feinstäube (PM) ist 1995

Source: German Emission Inventory (03.12.2021)

Emission trends in NFR 2.B.7

Recalculations

With EF and AD remaining unrevised, recalculations were not necessary.



For pollutant-specific information on recalculated emission estimates for Base Year and 2018, please see the pollutant specific recalculation tables following [chapter 8.1 - Recalculations](#).

Planned improvements

At the moment, no category-specific improvements are planned.

