

## 2.B.7 - Soda Ash Production

### Short description

Category Code	Method					AD					EF				
2.B.7	T1					NS					C				
Key Category	SO <sub>2</sub>	NO <sub>x</sub>	NH <sub>3</sub>	NMVOC	CO	BC	Pb	Hg	Cd	Diox	PAH	HCB	TSP	PM <sub>10</sub>	PM <sub>2.5</sub>
2.B.7	-	-	-/-	-	-	-	-	-	-	-	-	-	-/-	-	-

**T** = key source by Trend **L** = key source by Level

Methods	
<b>D</b>	Default
<b>RA</b>	Reference Approach
<b>T1</b>	Tier 1 / Simple Methodology *
<b>T2</b>	Tier 2*
<b>T3</b>	Tier 3 / Detailed Methodology *
<b>C</b>	CORINAIR
<b>CS</b>	Country Specific
<b>M</b>	Model
* as described in the EMEP/CORINAIR Emission Inventory Guidebook - 2007, in the group specific chapters.	
AD - Data Source for Activity Data	
<b>NS</b>	National Statistics
<b>RS</b>	Regional Statistics
<b>IS</b>	International Statistics
<b>PS</b>	Plant Specific data
<b>AS</b>	Associations, business organisations
<b>Q</b>	specific questionnaires, surveys
EF - Emission Factors	
<b>D</b>	Default (EMEP Guidebook)
<b>C</b>	Confidential
<b>CS</b>	Country Specific
<b>PS</b>	Plant Specific data

In Germany, soda ash is produced in three production facilities, all of which use the Solvay process. The production data is thus confidential.

### Method

#### Activity data

The Federal Statistical Office determines the total amounts of soda ash produced in Germany, but only in a way that respects confidentiality.

#### Emission factor

Emission factors (for TSP and NH<sub>3</sub>) are confidential due to restrictions on activity data.

#### Discussion of emission trends

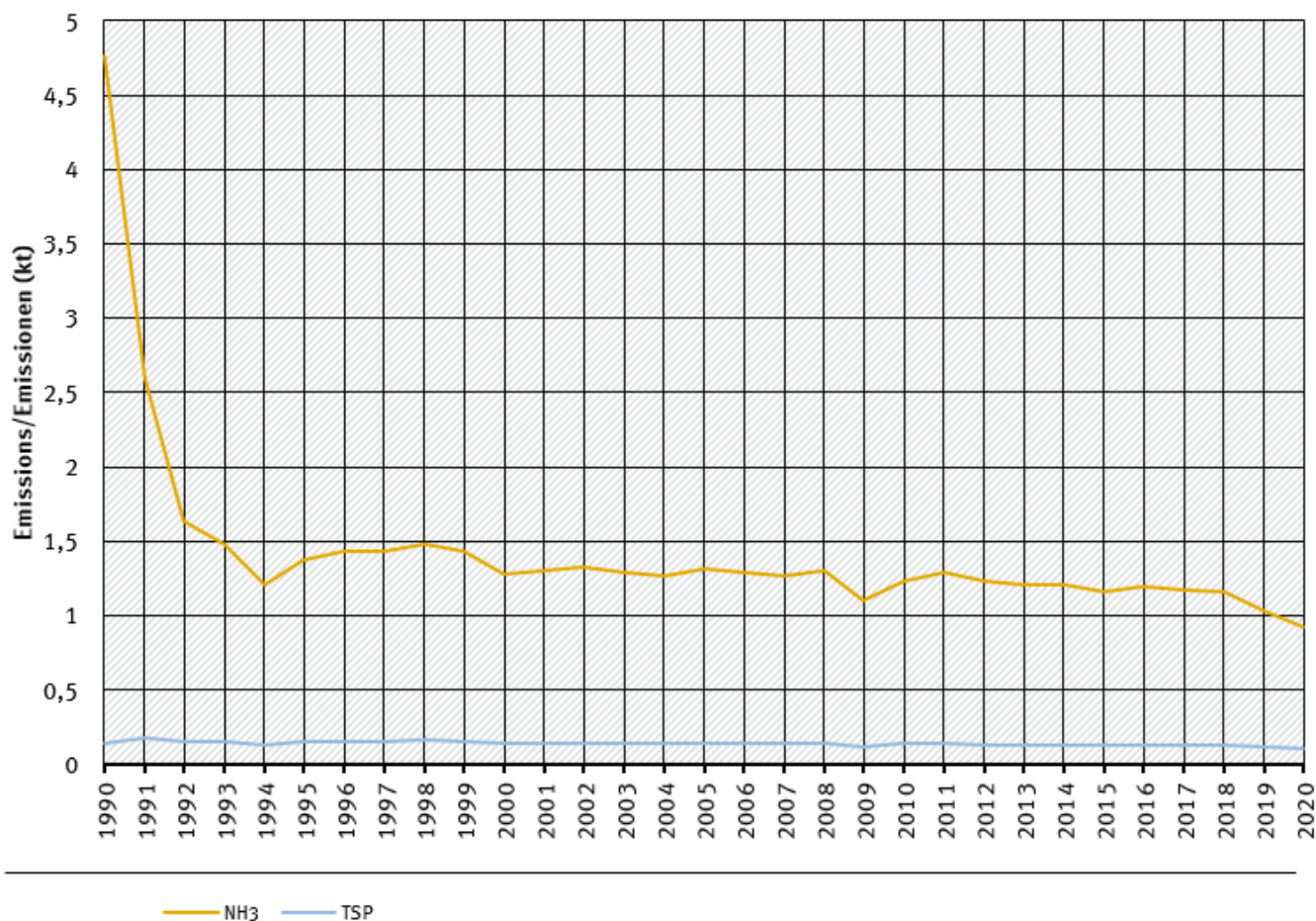
The steep reduction—especially for NH<sub>3</sub>—at the beginning of the 1990s was due to closures in the eastern German industrial

sector. For the year 1990 in the case of TSP for eastern Germany, a summary figure is reported for the Chemical Industry as a whole. However, after 1992, emissions of  $\text{NH}_3$  occur at a lower level.

All trends in emissions correspond to trends of emission factors. No rising trends are to identify.

## trends of emissions of soda industry

### Emissions by pollutant / Emissionen nach Schadstoff



\* Base Year for PM = 1995 / Basisjahr für Feinstäube (PM) ist 1995

Source: German Emission Inventory (03.12.2021)

### Emission trends in NFR 2.B.7

#### Recalculations

With EF and AD remaining unrevised, recalculations were not necessary.



For pollutant-specific information on recalculated emission estimates for Base Year and 2019, please see the pollutant specific recalculation tables following [chapter 8.1 - Recalculations](#).

#### Planned improvements

AD improvements are planned by using production figures of both german producers.

