

## 2.A.3 - Glass Production

### Short description

Category Code	Method					AD					EF				
2.A.3	T2					AS					CS				
Key Category	SO <sub>2</sub>	NO <sub>x</sub>	NH <sub>3</sub>	NMVOC	CO	BC	Pb	Hg	Cd	Diox	PAH	HCB	TSP	PM <sub>10</sub>	PM <sub>2.5</sub>
2.A.3	L/-	-/-	-/-	-/-	-	-	-/-	-	-/-	-	-	-	-/-	-/-	-/-

**T** = key source by Trend **L** = key source by Level

Methods	
<b>D</b>	Default
<b>RA</b>	Reference Approach
<b>T1</b>	Tier 1 / Simple Methodology *
<b>T2</b>	Tier 2*
<b>T3</b>	Tier 3 / Detailed Methodology *
<b>C</b>	CORINAIR
<b>CS</b>	Country Specific
<b>M</b>	Model

\* as described in the EMEP/CORINAIR Emission Inventory Guidebook - 2007, in the group specific chapters.

AD - Data Source for Activity Data	
<b>NS</b>	National Statistics
<b>RS</b>	Regional Statistics
<b>IS</b>	International Statistics
<b>PS</b>	Plant Specific data
<b>AS</b>	Associations, business organisations
<b>Q</b>	specific questionnaires, surveys
EF - Emission Factors	
<b>D</b>	Default (EMEP Guidebook)
<b>C</b>	Confidential
<b>CS</b>	Country Specific
<b>PS</b>	Plant Specific data

Germany's glass industry produces a wide range of different glass types that differ in their chemical composition. Germany's glass sector comprises the following sub-sectors: container glass, flat glass, domestic glass, special glass and mineral fibres (glass and stone wool). The largest production quantities are found in the sectors of container glass and flat glass. Further processing and treatment of glass and glass objects are not considered.

### Methodology

The emissions are calculated via a higher Tier method resembling a Tier 2 method, as the activity rates are tied to specific emission factors for different glass types.

### Activity data

The production figures are taken from the regularly appearing annual reports of the [Federal Association of the German Glass Industry](#) (Bundesverband Glasindustrie; BV Glas). "Production" refers to the amount of glass produced, which is considered to be equivalent to the amount of glass melted down.

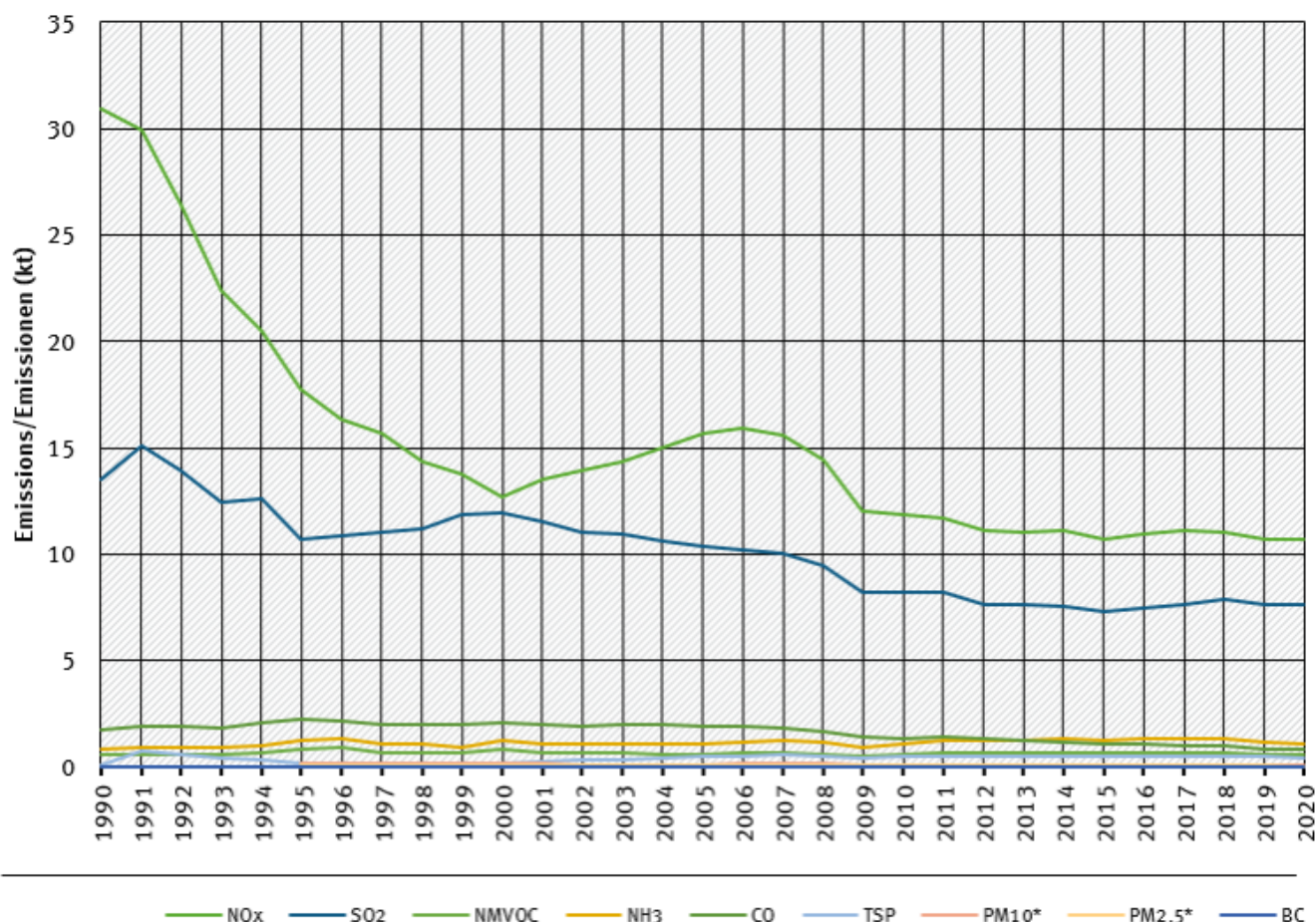
### Emission factors

Table 1: Overview of most recently applied emission factors

[illegible]

Trends in emissions correspond to trends of emission factors and of production development. The resulting trends are not constant, as a result of different EF for various glass types. So emissions of SO<sub>2</sub> couldn't decrease due to increased production Level of a relevant product.

## Emissions by pollutant / Emissionen nach Schadstoff



Source: German Emission Inventory (03.12.2021)

## Recalculations

Recalculations were necessary due to updated emission factors for all years.



For pollutant-specific information on recalculated emission estimates for Base Year and 2018, please see the pollutant specific recalculation tables following [chapter 8.1 - Recalculations](#).

## Planned improvements

No further improvements are planned.

---

<sup>1)</sup> UFoPlan FKZ 206 42 300/02: Teilvorhaben 02: „Providing up-to-date emission data for the glass and mineral fiber industry“ downloading via search “UBA-FB 001264” in (<https://doku.uba.de> ⇒ OPAC ⇒ use parameter ‘Signatur’)

<sup>2)</sup> ReFoPlan FKZ – 3719 52 1010: „Revision of emission factors for air pollutants in the cement clinker production and glass manufacturing sectors“ downloading via [https://www.umweltbundesamt.de/sites/default/files/medien/5750/publikationen/2021-03-18\\_texte\\_45-2021\\_luftschadstoff\\_glasindustrie.pdf](https://www.umweltbundesamt.de/sites/default/files/medien/5750/publikationen/2021-03-18_texte_45-2021_luftschadstoff_glasindustrie.pdf)