

## 5.C.1.b v - Cremation

Category Code	Method					AD					EF				
5.C.1.b.v	CS					AS					D, CS				
Key Category	SO <sub>2</sub>	NO <sub>x</sub>	NH <sub>3</sub>	NMVOG	CO	BC	Pb	Hg	Cd	Diox	PAH	HCB	TSP	PM <sub>10</sub>	PM <sub>2.5</sub>
5.C.1.b.v	-/-	-/-	-	-/-	-/-	-	-/-	-/-	-/-	-/-	-/-	-/-	-/-	-/-	-/-

**T** = key source by Trend **L** = key source by Level

Methods	
<b>D</b>	Default
<b>RA</b>	Reference Approach
<b>T1</b>	Tier 1 / Simple Methodology *
<b>T2</b>	Tier 2*
<b>T3</b>	Tier 3 / Detailed Methodology *
<b>C</b>	CORINAIR
<b>CS</b>	Country Specific
<b>M</b>	Model

\* as described in the EMEP/CORINAIR Emission Inventory Guidebook - 2007, in the group specific chapters.

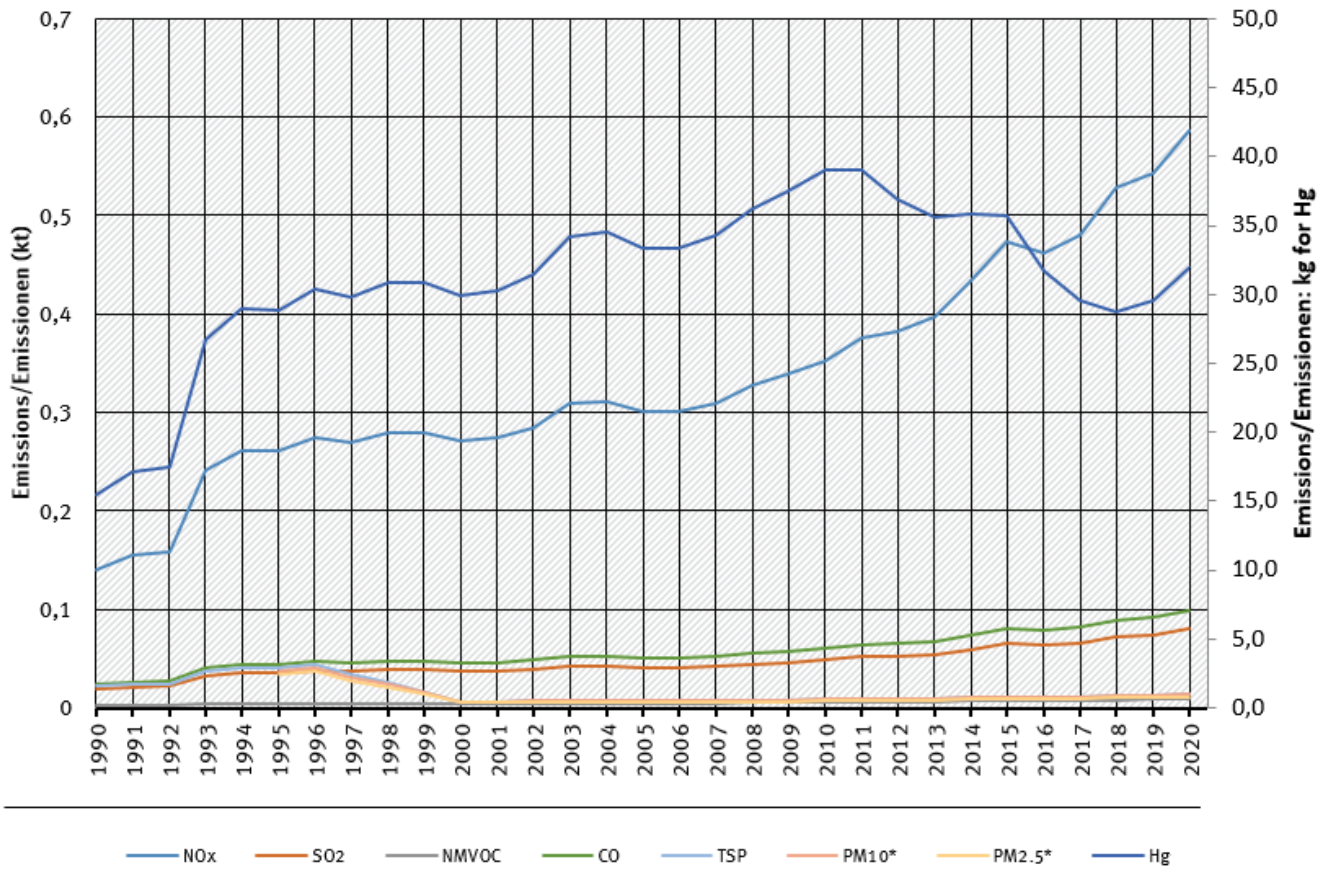
AD - Data Source for Activity Data	
<b>NS</b>	National Statistics
<b>RS</b>	Regional Statistics
<b>IS</b>	International Statistics
<b>PS</b>	Plant Specific data
<b>AS</b>	Associations, business organisations
<b>Q</b>	specific questionnaires, surveys
EF - Emission Factors	
<b>D</b>	Default (EMEP Guidebook)
<b>C</b>	Confidential
<b>CS</b>	Country Specific
<b>PS</b>	Plant Specific data

## Trends in emissions

All trends in emissions correspond to trends of xxx.

### trends of emissions of cremations

Emissions by pollutant / Emissionen nach Schadstoff



\* Base Year for PM = 1995 / Basisjahr für Feinstäube (PM) ist 1995

Source: German Emission Inventory (03.12.2021)

### Emission trends in NFR 5.C.1