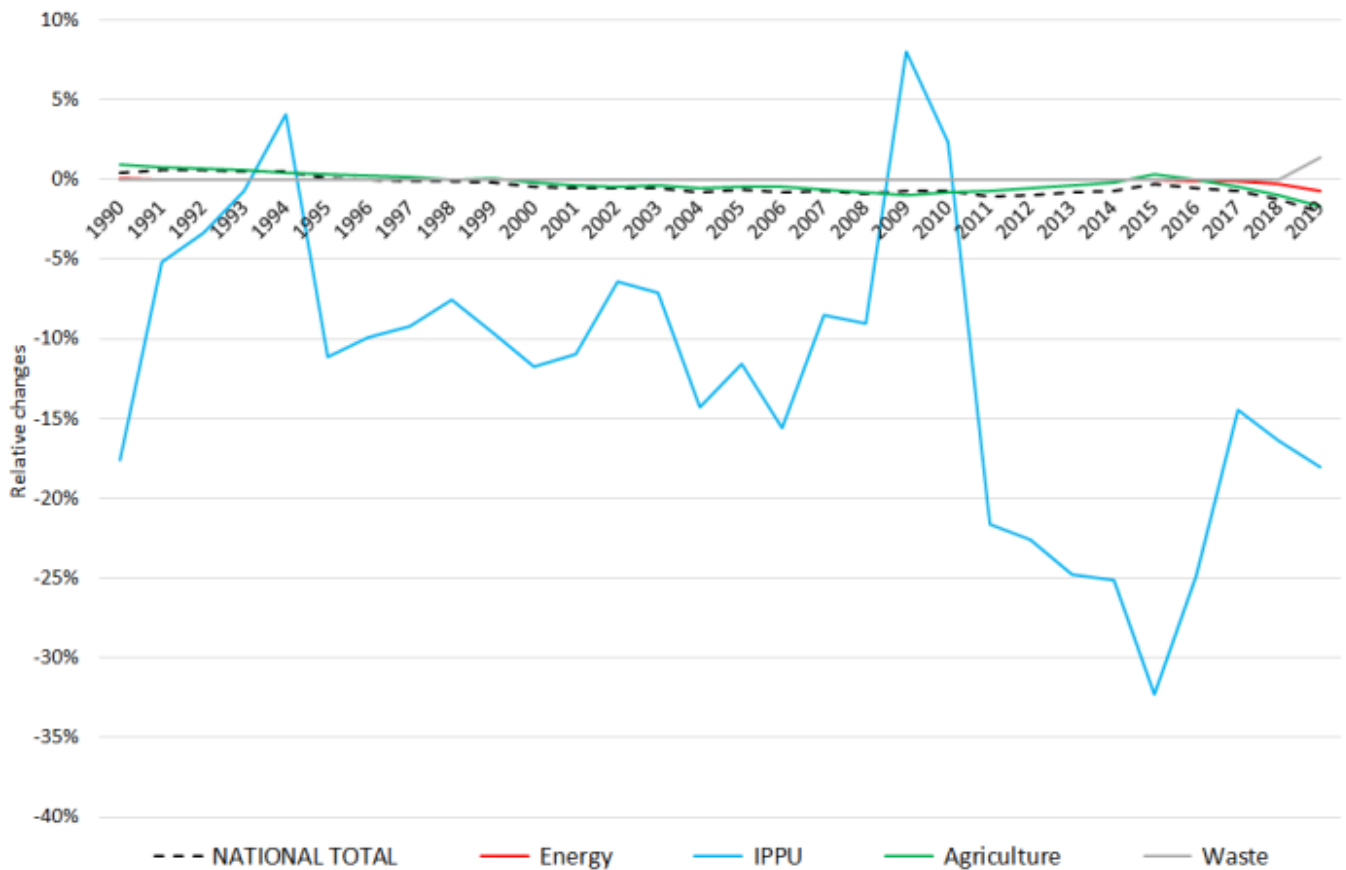
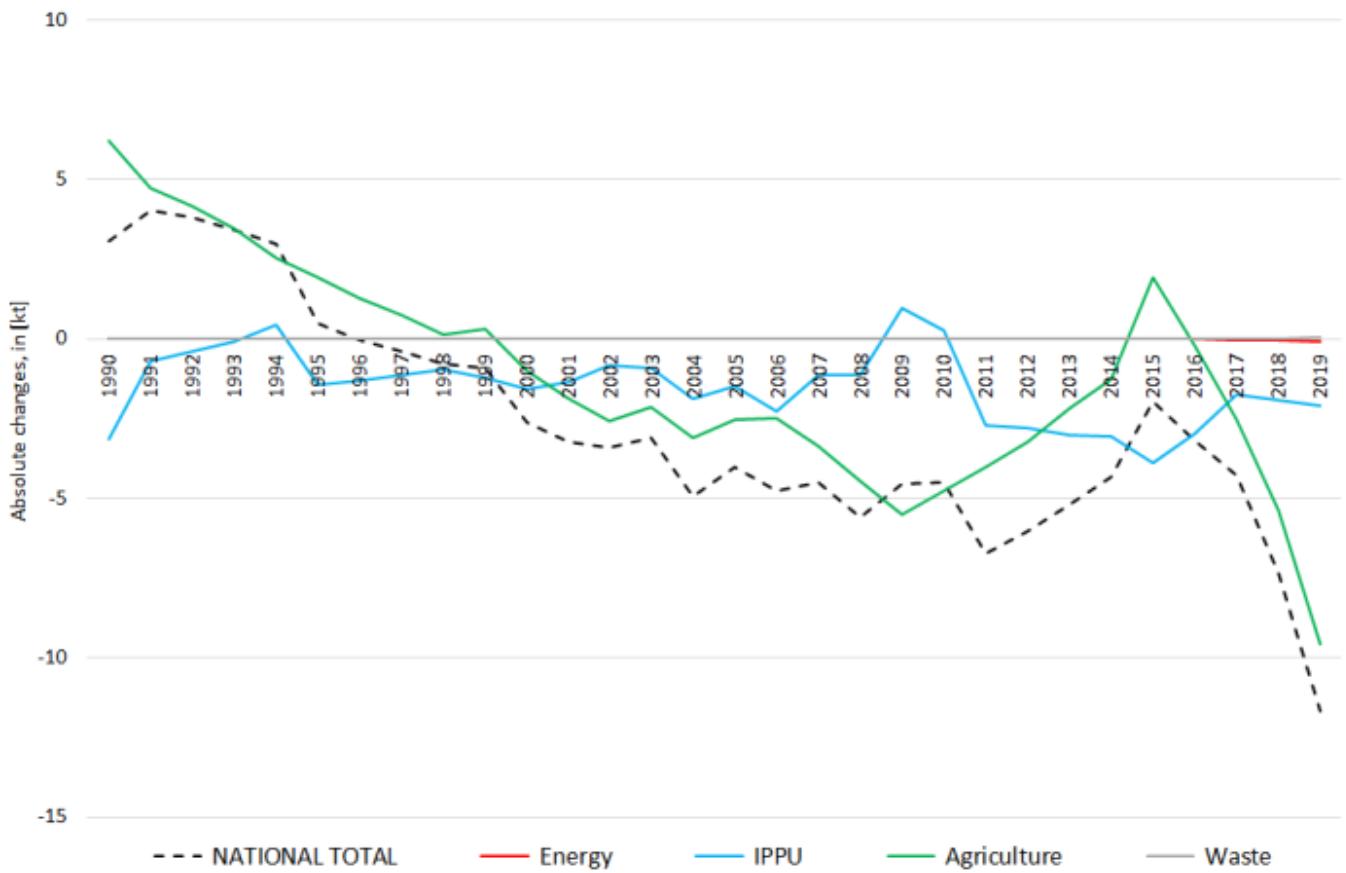


Recalculations - Ammonia

Revision of NH₃ emissions over time:



The small changes within the **National Total** reported for **1990 (-3.1 kt or -0.43 %)** result almost entirely from revisions in NFRs **2.B.10.a** (-3.14 kt), **3.B.3** (+4.69 kt) and **3.D.a.2.a** (+1.54 kt) together with less significant changes throughout NFRs 1 and 2.

However, the most significant percental change occurs for **NFR 1.A.3.d ii with minus 54 %**.

Table 1: Changes in emission estimates for 1990

NFR Sector	Submission 2021	Submission 2022	Difference		Reasoning
	[kt]			relative	
NATIONAL TOTAL	715,09	718,16	3,07	0,43%	see description and reasoning in: sub-category chapters
NFR 1 - Energy	15,53	15,54	0,01	0,03%	sub-category chapters
1.A.3.b iii	0,08	0,08	0,00	0,03%	here
1.A.3.c	0,02	0,03	0,01	38,23%	here
1.A.3.d ii	0,01	0,01	0,00	-24,12%	here
1.A.4.b ii	0,000162	0,000160	-0,000003	-1,71%	here
1.A.4.c iii	0,0002	0,0001	-0,0001	-54,03%	here
1.A.5.b	0,3000	0,2999	-0,0001	-0,05%	here
NFR 2 - IPPU	17,81	14,68	-3,14	-17,60%	sub-category chapters
2.B.10.a	9,57	6,44	-3,14	-32,76%	here
NFR 3 - Agriculture	681,58	687,79	6,20	0,91%	sub-category chapters
3.B.1.b	91,39	91,43	0,03	0,04%	here
3.B.3	117,12	121,81	4,69	4,00%	here
3.B.4.g i	11,45	11,31	-0,14	-1,19%	here
3.B.4.g iii	3,96	3,99	0,02	0,61%	here
3.B.4.g iv	2,48	2,47	-0,01	-0,50%	here
3.D.a.2.a	273,67	275,21	1,54	0,56%	here
3.D.a.3	22,16	22,23	0,07	0,30%	here
NFR 5 - Waste	0,16	0,16	0,00	0,00%	
NFR 6 - Other		NA			

Changes within the **National Total** reported for **2019 (-11.7 kt | -2 %)** result mainly from several larger revisions in **NFR 3 (-9.6 kt)** together with less significant changes throughout NFRs 1, 2 and 5.

The most significant relative change occurs for **NFR 2.A.3 with plus 68 %**.

Table 2: Changes in emission estimates for 2019

NFR Sector	Submission 2021	Submission 2022	Difference		Reasoning
	[kt]			relative	
NATIONAL TOTAL	586,69	575,00	-11,69	-1,99%	see description and reasoning in: sub-category chapters
NFR 1 - Energy	13,84	13,74	-0,10	-0,71%	sub-category chapters
1.A.1.a	0,65	0,66	0,01	1,27%	here
1.A.1.b	0,592	0,590	-0,002	-0,40%	here
1.A.1.c	0,024	0,026	0,002	9,75%	here
1.A.2.a	0,10	0,11	0,01	5,50%	here
1.A.2.b	0,0072	0,0066	-0,001	-8,48%	here
1.A.2.e	0,0016	0,0019	0,0002	14,03%	here
1.A.2.f	0,0216	0,0221	0,0005	2,30%	here
1.A.2.g vii	0,00804	0,00805	0,00001	0,11%	here
1.A.2.g viii	0,318	0,375	0,06	17,85%	here
1.A.3.a i(i)	0,131	0,132	0,001	1,10%	here
1.A.3.a ii(i)	0,0334	0,0337	0,0002	0,69%	here
1.A.3.b i	8,918	8,834	-0,08	-0,95%	here
1.A.3.b ii	0,181	0,180	-0,001	-0,63%	here
1.A.3.b iii	0,745	0,749	0,004	0,58%	here
1.A.3.b iv	0,0217	0,0215	-0,0002	-1,10%	here
1.A.3.c	0,007	0,008	0,001	11,53%	here

	Submission 2021	Submission 2022	Difference		Reasoning
NFR Sector	[kt]		relative		see description and reasoning in:
NATIONAL TOTAL	586,69	575,00	-11,69	-1,99%	sub-category chapters
NFR 1 - Energy	13,84	13,74	-0,10	-0,71%	sub-category chapters
1.A.3.d ii	0,0064	0,0058	-0,0006	-9,00%	here
1.A.4.a i	0,510	0,390	-0,12	-23,54%	here
1.A.4.a ii	0,001872	0,001873	0,000002	0,10%	here
1.A.4.b i	1,479	1,504	0,03	1,71%	here
1.A.4.b ii	0,00037	0,00040	0,00002	6,08%	here
1.A.4.c i	0,046	0,051	0,005	9,90%	here
1.A.4.c ii	0,00948	0,00949	0,00001	0,14%	here
1.A.4.c iii	0,00016	0,00010	-0,00006	-36,87%	here
1.A.5.a	0,0037	0,0038	0,0001	1,82%	here
1.A.5.b	0,0258	0,0257	-0,0001	-0,50%	here
1.B.1.b	0,0019	0,0021	0,0003	13,30%	here
NFR 2 - IPPU	11,502	9,423	-2,08	-18,07%	sub-category chapters
2.A.3	0,70	1,17	0,47	67,99%	here
2.A.6	0,05199	0,05201	0,00002	0,04%	here
2.B.10.a	7,88	5,32	-2,55	-32,41%	here
NFR 3 - Agriculture	557,85	548,29	-9,56	-1,71%	sub-category chapters
3.B.1.a	50,40	58,88	8,47	16,81%	here
3.B.1.b	64,47	71,69	7,21	11,19%	here
3.B.3	88,50	85,01	-3,49	-3,94%	here
3.B.4.d	0,239	0,245	0,006	2,35%	here
3.B.4.e	5,78	6,16	0,39	6,67%	here
3.B.4.g i	7,93	8,01	0,08	0,95%	here
3.B.4.g ii	12,33	8,55	-3,78	-30,66%	here
3.B.4.g iii	10,62	9,83	-0,78	-7,39%	here
3.B.4.g iv	1,55	1,56	0,01	0,81%	here
3.D.a.1	68,09	65,63	-2,46	-3,61%	here
3.D.a.2.a	174,11	162,64	-11,47	-6,59%	here
3.D.a.2.b	1,73	1,90	0,18	10,17%	here
3.D.a.2.c	54,63	50,98	-3,64	-6,67%	here
3.D.a.3	12,78	12,56	-0,21	-1,68%	here
3.I	3,20	3,14	-0,06	-1,86%	here
NFR 5 - Waste	3,49	3,54	0,05	1,37%	sub-category chapters
5.B.1	1,95	1,96	0,01	0,64%	here
5.B.2	1,54	1,58	0,04	2,29%	here
NFR 6 - Other	NA				