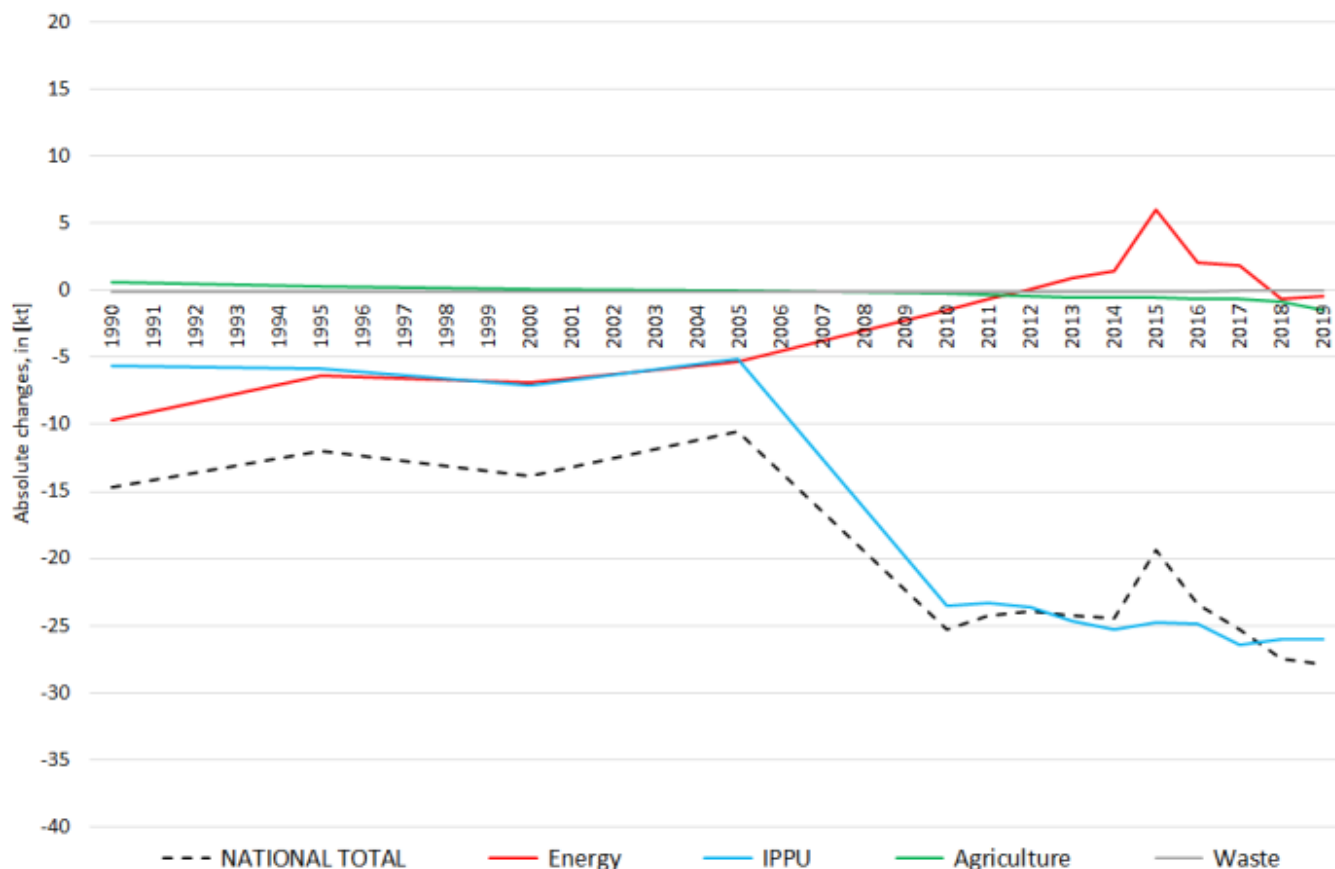


Recalculations - Nitrogen Oxides

Revision of NO_x emissions over time:

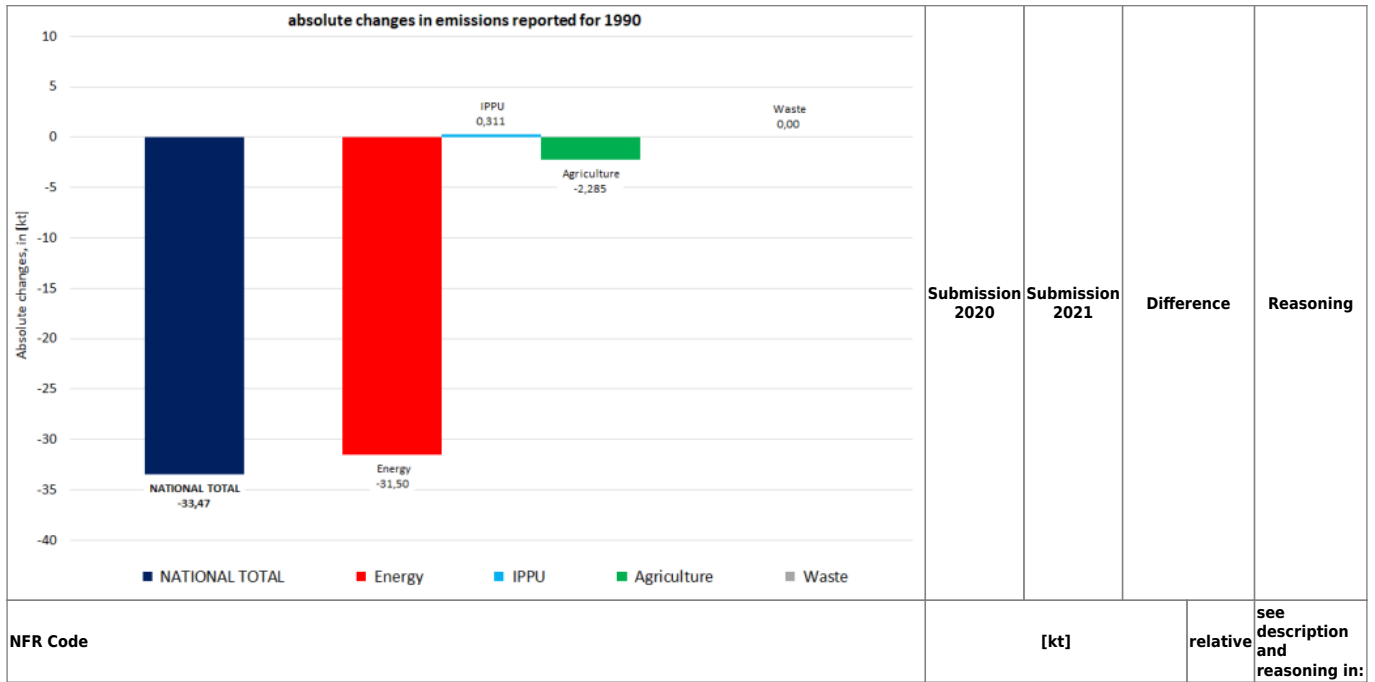


The changes within the **National Total reported for 1990 (-34 kt | -1.19 %)** are dominated by changes in **NFRs 1.A.3.b i, 1.A.3.b ii and 1.A.3.b iii** together with less significant revisions throughout NFRs 1, 2 and 3.

The most significant relative change occurs for **NFR 2.G with minus 58 %**.

Table 1: Changes of emission estimates 1990

absolute changes in emissions reported for 1990		Submission 2020	Submission 2021	Difference	Reasoning
NFR Code		[kt]		relative	see description and reasoning in:



	Submission 2020	Submission 2021	Difference	Reasoning
NATIONAL TOTAL	2.884,38	2.850,05	-34,33	-1,19%
NFR 1 - Energy	2.634,24	2.601,88	-32,36	-1,23%
1.A.2.g vii	49,60	50,23	0,63	1,28%
1.A.3.a i(i)	3,88	3,94	0,06	1,54%
1.A.3.a ii(i)	2,85	2,80	-0,05	-1,90%
1.A.3.b i	808,22	765,68	-42,54	-5,26%
1.A.3.b ii	41,49	31,49	-10,00	-24,11%
1.A.3.b iii	485,89	506,00	20,11	4,14%
1.A.3.b iv	2,61	2,45	-0,16	-6,18%
1.A.4.a ii	11,52	11,60	0,08	0,67%
1.A.4.b ii	0,07	0,06	-0,01	-8,44%
1.A.4.c ii	49,78	49,31	-0,475	-0,95%
NFR 2 - IPPU	106,06	106,37	0,31	0,29%
2.C.3	NA	0,74	0,74	
2.G	0,74	0,31	-0,43	-58,05%
NFR 3 - Agriculture	143,55	141,27	-2,28	-1,59%
3.B.1.a	0,72	0,67	-0,05	-7,07%
3.B.1.b	0,79	0,70	-0,09	-11,65%
3.B.4.g iii	0,00337	0,00339	0,00002	0,48%
3.D.a.1	85,31	86,57	1,256	1,47%
3.D.a.2.a	46,65	43,46	-3,19	-6,84%
3.D.a.3	8,65	8,44	-0,21	-2,42%
NFR 5 - Waste	0,53	0,53	0,00	0,00%
NFR 6 - Other		NA		

The small changes within the **National Total reported for 2018 (+8.22 kt | +0.68 %)** are dominated by changes in **NFRs 1 and 3**.

Here, the strongest relative change occurs for **NFR 2.G with minus 49 %**.

Table 2: Changes of emission estimates 2018

absolute changes in emissions reported for 2018		Submission 2020	Submission 2021	Difference	Reasoning
NFR Code	[kt]	[kt]	relative	see description and reasoning in:	
NATIONAL TOTAL	1.202,28	1.210,50	8,22	0,68% sub-category chapters	
NFR 1 - Energy	996,11	1.007,16	11,05	1,11% sub-category chapters	
1.A.1.a	239,65	241,73	2,08	0,87% here	
1.A.1.b	13,03	16,16	3,13	24,04% here	
1.A.1.c	12,04	13,06	1,02	8,50% here	
1.A.2.a	4,10	4,17	0,07	1,75% here	
1.A.2.b	0,99	1,02	0,03	2,54% here	
1.A.2.e	0,19	0,21	0,02	9,42% here	
1.A.2.g vii	11,31	15,37	4,07	35,97% here	
1.A.2.g viii	72,70	68,70	-4,00	-5,50% here	
1.A.3.a i(i)	11,77	11,84	0,07	0,61% here	
1.A.3.a ii(i)	2,31	2,67	0,35	15,27% here	
1.A.3.b i	286,10	294,97	8,87	3,10% here	
1.A.3.b ii	60,49	60,37	-0,12	-0,20% here	
1.A.3.b iii	119,39	116,30	-3,09	-2,59% here	
1.A.3.b iv	1,63	1,66	0,03	1,59% here	
1.A.3.c	8,71	7,49	-1,23	-14,07% here	
1.A.3.d ii	26,09	27,28	1,20	4,60% here	
1.A.3.e i	1,50	1,50	0,01	0,45% here	
1.A.4.a i	20,12	18,60	-1,52	-7,54% here	
1.A.4.a ii	9,92	8,15	-1,77	-17,86% here	
1.A.4.b i	52,65	54,48	1,83	3,49% here	
1.A.4.b ii	0,499	0,501	0,002	0,32% here	
1.A.4.c i	6,07	5,84	-0,23	-3,80% here	
1.A.4.c ii	27,29	27,43	0,14	0,51% here	
1.A.4.c iii	2,69	2,77	0,08	2,70% here	
1.A.5.a	0,25	0,25	0,00	0,22% here	
1.A.5.b	2,87	2,87	0,00	0,07% here	
1.B.1.b	0,64	0,65	0,01	1,55% here	
NFR 2 - IPPU	86,70	86,82	0,12	0,14% sub-category chapters	
2.A.3	11,71	11,51	-0,20	-1,67% here	
2.C.3	NA	0,53	0,53	here	
2.G	0,436	0,222	-0,214	-49,14% here	
NFR 3 - Agriculture	118,64	115,69	-2,95	-2,49% sub-category chapters	
3.B.1.a	0,520	0,488	-0,032	-6,21% here	
3.B.1.b	0,566	0,497	-0,070	-12,31% here	
3.B.3	0,3340	0,3352	0,0013	0,38% here	
3.B.4.g i	0,0180	0,0178	-0,0001	-0,65% here	
3.B.4.g ii	0,0180	0,0180	0,0000	-0,20% here	
3.B.4.g iii	0,0108	0,0108	-0,0001	-0,67% here	
3.B.4.g iv	0,0020	0,0020	0,0000	-0,72% here	
3.D.a.1	59,01	59,11	0,10	0,17% here	
3.D.a.2.a	39,94	37,80	-2,14	-5,35% here	
3.D.a.2.b	0,56	0,51	-0,05	-8,55% here	
3.D.a.2.c	11,77	11,55	-0,22	-1,91% here	
3.D.a.3	5,66	5,13	-0,54	-9,47% here	
3.I	0,177	0,172	-0,005	-2,68% here	
NFR 5 - Waste	0,830	0,830	0,000	0,00%	
NFR 6 - Other		NA			