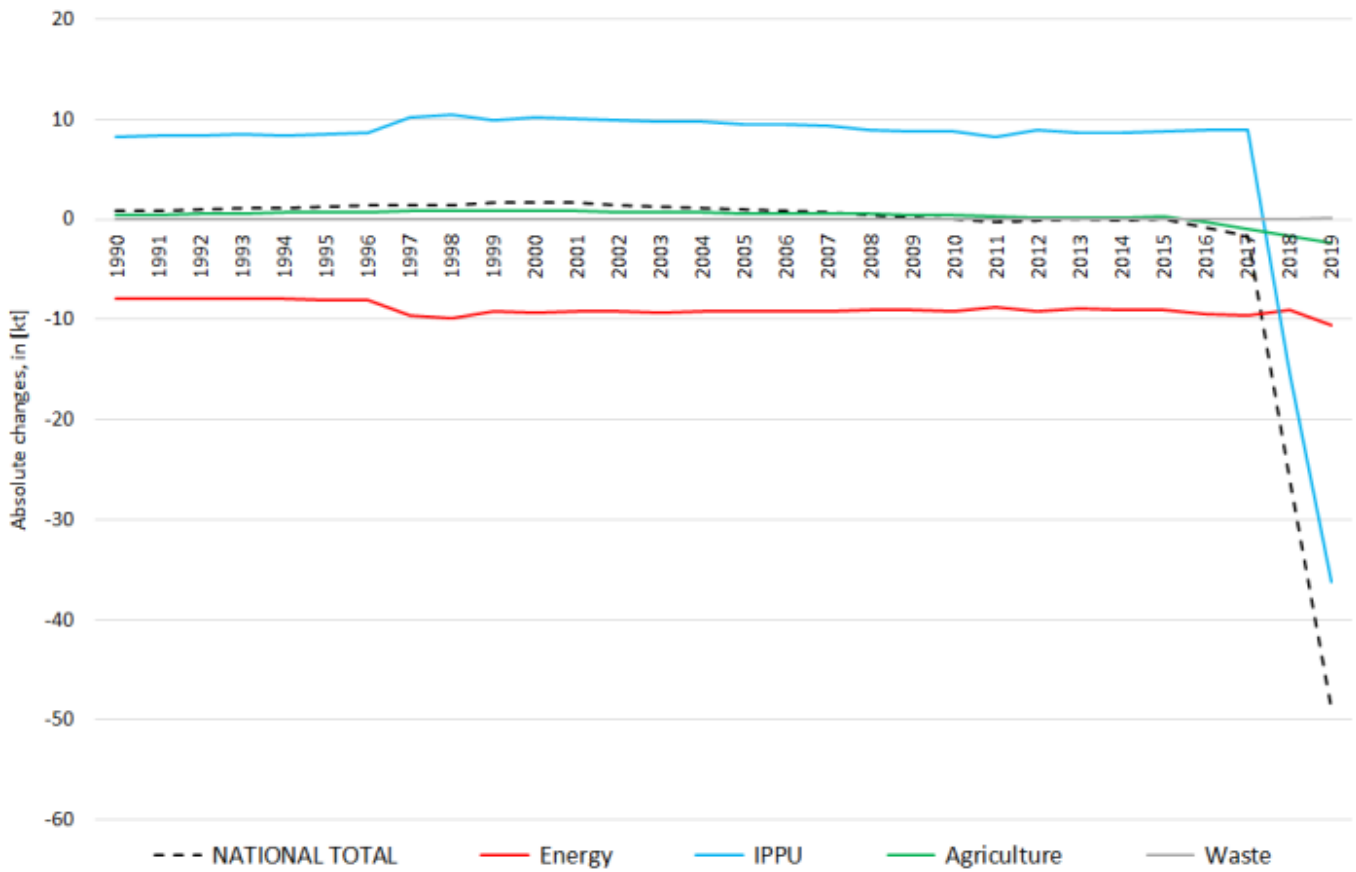
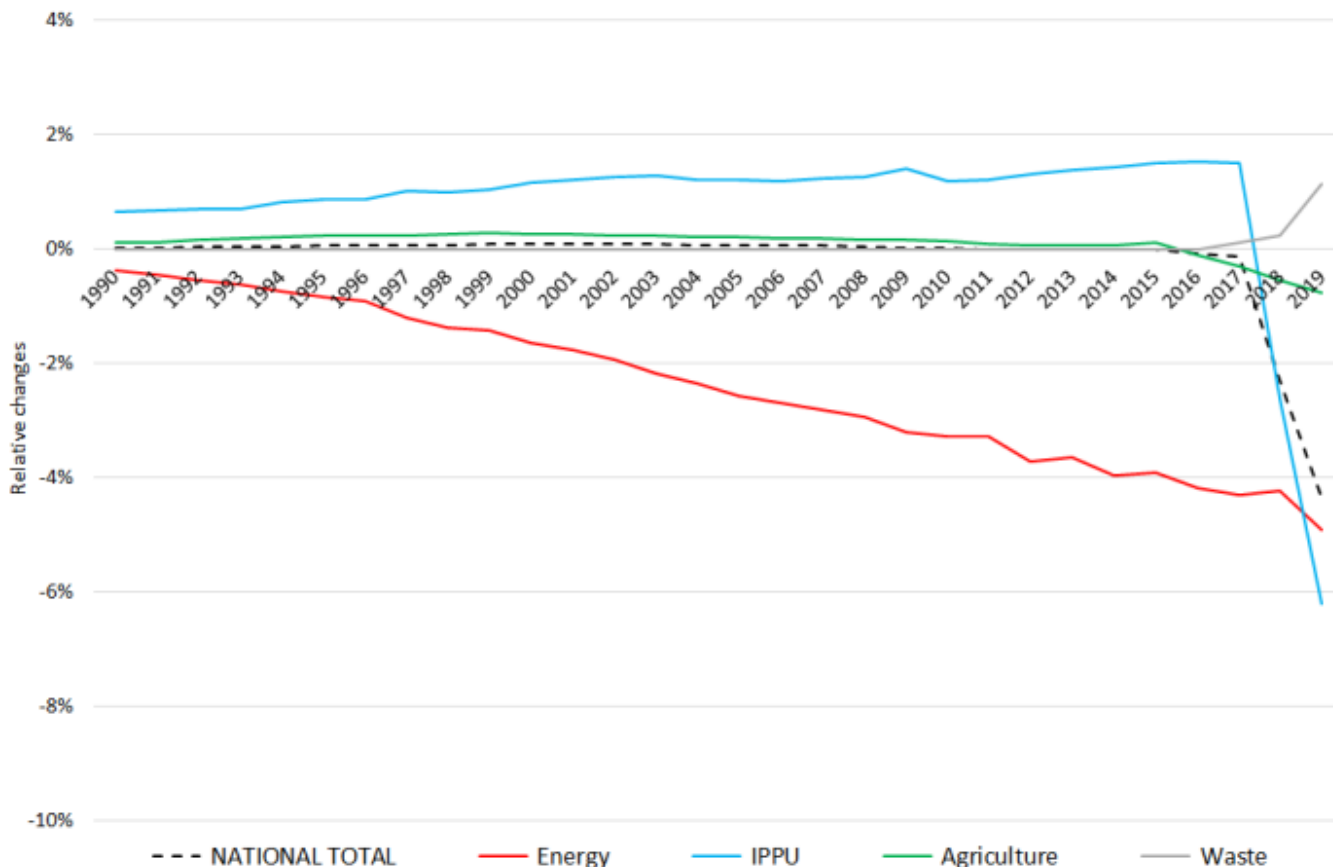


# Recalculations - Non-Methane Volatile Organic Compounds

Revision of NMVOC emissions over time





The significant changes within the **National Total reported for 1990 (-142 kt | -3.53 %)** are dominated by revisions in **NFR sub-category 1.A.3.b i (-71.6 kt | -6 %)** and **NFR 3 (-48.6 kt |-11 %)**.

Table 1: Changes in emission estimates for 1990

absolute changes in emissions reported for 1990					Submission 2021	Submission 2022	Difference	Reasoning
NFR Code	[kt]			relative	see description and reasoning in: sub-category chapters			
<b>NATIONAL TOTAL</b>	<b>3.890,85</b>	<b>3.891,58</b>	<b>0,73</b>	<b>0,02%</b>	sub-category chapters			
<b>NFR 1 - Energy</b>	<b>2.170,57</b>	<b>2.162,57</b>	<b>-8,00</b>	<b>-0,37%</b>	sub-category chapters			
1.A.3.a i(i)	0,80	0,80	0,00	-0,49%	<a href="#">here</a>			
1.A.3.a ii(i)	0,50	0,42	-0,08	-15,49%	<a href="#">here</a>			
1.A.3.b i	1.119,06	1.119,06	0,00	0,00%	<a href="#">here</a>			
1.A.3.b ii	39,73	39,73	0,00	0,00%	<a href="#">here</a>			
1.A.3.b iii	60,10	60,12	0,02	0,03%	<a href="#">here</a>			
1.A.3.c	4,19	4,22	0,03	0,718%	<a href="#">here</a>			
1.A.3.d ii	3,20	3,27	0,07	2,106%	<a href="#">here</a>			

absolute changes in emissions reported for 1990					Submission 2021	Submission 2022	Difference	Reasoning
NFR Code	[kt]				relative	see description and reasoning in:		
<b>NATIONAL TOTAL</b>	<b>3.890,85</b>	<b>3.891,58</b>	<b>0,73</b>	<b>0,02%</b>	sub-category chapters			
<b>NFR 1 - Energy</b>	<b>2.170,57</b>	<b>2.162,57</b>	<b>-8,00</b>	<b>-0,37%</b>	sub-category chapters			
1.A.4.b ii	12,48	12,52	0,04	0,32%	<a href="#">here</a>			
1.A.4.c iii	0,04	0,02	-0,02	-54,62%	<a href="#">here</a>			
1.A.5.b	21,32	21,30	-0,02	-0,10%	<a href="#">here</a>			
1.B.2.a iv	81,24	73,15	-8,09	-9,96%				
1.B.2.a v	87,73	87,79	0,05	0,06%				
<b>NFR 2 - IPPU</b>	1.283,34 1.291,63 8,30 0,65%				sub-category chapters			
2.A.1	1,33	1,33	0,00	0,00%	<a href="#">here</a>			
2.A.2	0,33	0,33	0,00	0,00%	<a href="#">here</a>			
2.A.3	0,56	0,56	0,00	0,00%	<a href="#">here</a>			
2.A.5.a	NA	NA	#WERT!	#WERT!	<a href="#">here</a>			
2.A.5.b	NA	NA	#WERT!	#WERT!	<a href="#">here</a>			
2.A.5.c	NA	NA	#WERT!	#WERT!	<a href="#">here</a>			
2.A.6	IE	IE	#WERT!	#WERT!	<a href="#">here</a>			
2.B.1	NA	NA	#WERT!	#WERT!	<a href="#">here</a>			
2.B.2	NA	NA	#WERT!	#WERT!	<a href="#">here</a>			
2.B.3	NA	NA	#WERT!	#WERT!	<a href="#">here</a>			
2.B.5	NA	NA	#WERT!	#WERT!	<a href="#">here</a>			
2.B.6	NA	NA	#WERT!	#WERT!	<a href="#">here</a>			
2.B.7	NA	NA	#WERT!	#WERT!	<a href="#">here</a>			
2.B.10.a	52,28	52,28	0,00	0,00%	<a href="#">here</a>			
2.B.10.b	NA	8,09	#WERT!	#WERT!	<a href="#">here</a>			
2.C.1	6,57	6,57	0,00	0,00%	<a href="#">here</a>			
2.C.2	NE	NE	#WERT!	#WERT!	<a href="#">here</a>			
2.C.3	NE	NE	#WERT!	#WERT!	<a href="#">here</a>			
2.C.4	NE	NE	#WERT!	#WERT!	<a href="#">here</a>			
2.C.5	NA	NA	#WERT!	#WERT!	<a href="#">here</a>			
2.C.6	NA	NA	#WERT!	#WERT!	<a href="#">here</a>			
2.C.7.a	NA	NA	#WERT!	#WERT!	<a href="#">here</a>			
2.C.7.b	NE	NE	#WERT!	#WERT!	<a href="#">here</a>			
2.C.7.c	NA	NA	#WERT!	#WERT!	<a href="#">here</a>			
2.C.7.d	NA	NA	#WERT!	#WERT!	<a href="#">here</a>			
2.D.3.a	92,15	92,15	0,00	0,00%	<a href="#">here</a>			
2.D.3.b	1,90	1,90	0,00	0,00%	<a href="#">here</a>			
2.D.3.c	0,07	0,07	0,00	0,00%	<a href="#">here</a>			
2.D.3.d	540,00	540,00	0,00	0,00%	<a href="#">here</a>			
2.D.3.e	114,00	114,00	0,00	0,00%	<a href="#">here</a>			
2.D.3.f	1,41	1,41	0,00	0,00%	<a href="#">here</a>			
2.D.3.g	70,00	69,59	-0,41	-0,58%	<a href="#">here</a>			
2.D.3.h	139,36	139,36	0,00	0,00%	<a href="#">here</a>			
2.D.3.i	241,57	242,18	0,61	0,25%	<a href="#">here</a>			
2.G	1,62	1,62	0,00	0,00%	<a href="#">here</a>			
2.H.1	NA	NA	#WERT!	#WERT!	<a href="#">here</a>			

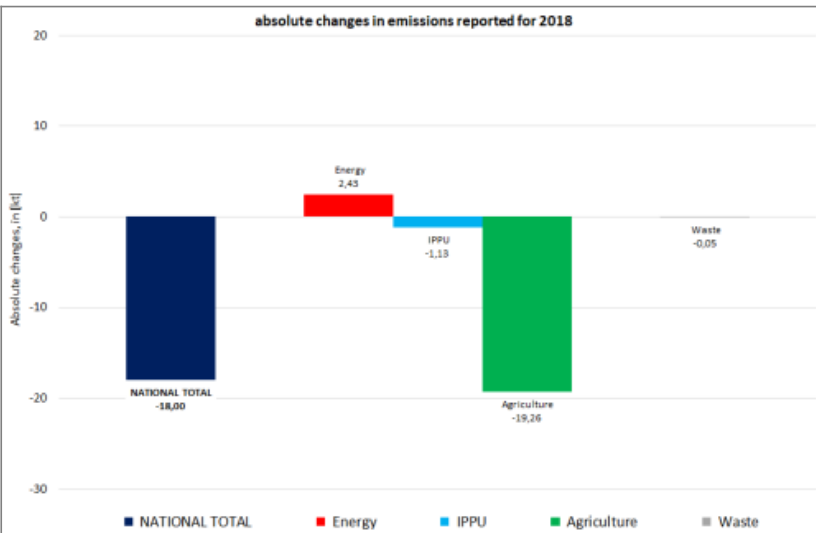
absolute changes in emissions reported for 1990					Submission 2021	Submission 2022	Difference	Reasoning
NFR Code	[kt]				relative	see description and reasoning in:		
<b>NATIONAL TOTAL</b>	<b>3.890,85</b>	<b>3.891,58</b>	<b>0,73</b>	<b>0,02%</b>	sub-category chapters			
<b>NFR 1 - Energy</b>	<b>2.170,57</b>	<b>2.162,57</b>	<b>-8,00</b>	<b>-0,37%</b>	sub-category chapters			
2.H.2	15,20	15,20	0,00	0,00%	<a href="#">here</a>			
2.H.3	NA	NA	#WERT!	#WERT!	<a href="#">here</a>			
2.I	4,98	4,98	0,00	0,00%	<a href="#">here</a>			
2.J	NE	NE	#WERT!	#WERT!	<a href="#">here</a>			
2.K	NA	NA	#WERT!	#WERT!	<a href="#">here</a>			
2.L	NA	NA	#WERT!	#WERT!	<a href="#">here</a>			
<b>NFR 3 - Agriculture</b>	<b>398,49</b>	<b>398,93</b>	<b>0,44</b>	<b>0,11%</b>	sub-category chapters			
3.B.1.a	196,61	196,61	0,00	0,00%	<a href="#">here</a>			
3.B.1.b	153,72	154,16	0,44	0,29%	<a href="#">here</a>			
3.B.2	0,43	0,43	0,00	0,00%	<a href="#">here</a>			
3.B.3	18,41	18,41	0,00	0,00%	<a href="#">here</a>			
3.B.4.a	NO	NO	#WERT!	#WERT!	<a href="#">here</a>			
3.B.4.d	0,05	0,05	0,00	0,00%	<a href="#">here</a>			
3.B.4.e	3,25	3,25	0,00	0,00%	<a href="#">here</a>			
3.B.4.f	IE	IE	#WERT!	#WERT!	<a href="#">here</a>			
3.B.4.g i	8,82	8,82	0,00	0,00%	<a href="#">here</a>			
3.B.4.g ii	3,82	3,82	0,00	0,00%	<a href="#">here</a>			
3.B.4.g iii	2,46	2,46	0,00	0,00%	<a href="#">here</a>			
3.B.4.g iv	3,23	3,23	0,00	0,00%	<a href="#">here</a>			
3.B.4.h	NE	NE	#WERT!	#WERT!	<a href="#">here</a>			
3.D.a.1	NA	NA	#WERT!	#WERT!	<a href="#">here</a>			
3.D.a.2.a	NA	NA	#WERT!	#WERT!	<a href="#">here</a>			
3.D.a.2.b	NA	NA	#WERT!	#WERT!	<a href="#">here</a>			
3.D.a.2.c	NA	NA	#WERT!	#WERT!	<a href="#">here</a>			
3.D.a.3	NA	NA	#WERT!	#WERT!	<a href="#">here</a>			
3.D.a.4	NA	NA	#WERT!	#WERT!	<a href="#">here</a>			
3.D.b	NA	NA	#WERT!	#WERT!	<a href="#">here</a>			
3.D.c	NA	NA	#WERT!	#WERT!	<a href="#">here</a>			
3.D.d	NA	NA	#WERT!	#WERT!	<a href="#">here</a>			
3.D.e	7,692	7,692	0,00	0,00%	<a href="#">here</a>			
3.D.f	NA	NA	#WERT!	#WERT!	<a href="#">here</a>			
3.F	NO	NO	#WERT!	#WERT!	<a href="#">here</a>			
3.I	NA	NA	#WERT!	#WERT!	<a href="#">here</a>			
<b>NFR 5 - Waste</b>	<b>38,45</b>	<b>38,45</b>	<b>0,00</b>	<b>0,00%</b>				
<b>NFR 6 - Other</b>	<b>NA</b>							

Changes within the **National Total reported for 2018 (-15.31 kt | -1.34 %)** are dominated by decreased emission estimates **NFR 3**.

In **NFR 5**, emissions have been re-allocated with no impact on the sector's total emissions. The strongest relative change occurs for **NFR 2.G with minus 50 %**.

Table 2: Changes in emission estimates for 2018

NFR Code	[kt]				relative	Reasoning
	Submission 2020	Submission 2021	Difference			
<b>NATIONAL TOTAL</b>	<b>1.140,32</b>	<b>1.125,02</b>	<b>-15,31</b>	<b>-1,34%</b>	see description and reasoning in: sub-category chapters	
<b>NFR 1 - Energy</b>	<b>210,09</b>	<b>214,58</b>	<b>4,49</b>	<b>2,14%</b>	sub-category chapters	
1.A.1.a	7,95	8,06	0,11	1,37%	<a href="#">here</a>	
1.A.1.b	0,75	0,90	0,15	19,64%	<a href="#">here</a>	
1.A.1.c	0,32	0,39	0,07	22,37%	<a href="#">here</a>	
1.A.2.a	0,255	0,259	0,004	1,50%	<a href="#">here</a>	
1.A.2.b	0,08	0,08	0,00	2,51%	<a href="#">here</a>	
1.A.2.e	0,02	0,02	0,002	8,50%	<a href="#">here</a>	
1.A.2.g vii	3,63	3,62	-0,01	-0,26%	<a href="#">here</a>	
1.A.2.g viii	6,04	5,65	-0,38	-6,37%	<a href="#">here</a>	
1.A.3.a i(i)	0,79	0,72	-0,06	-8,24%	<a href="#">here</a>	
1.A.3.a ii(i)	0,56	0,49	-0,07	-12,86%	<a href="#">here</a>	
1.A.3.b i	46,43	47,87	1,43	3,09%	<a href="#">here</a>	
1.A.3.b ii	1,57	1,49	-0,09	-5,41%	<a href="#">here</a>	
1.A.3.b iii	3,04	2,96	-0,08	-2,56%	<a href="#">here</a>	
1.A.3.b iv	14,75	15,20	0,45	3,07%	<a href="#">here</a>	
1.A.3.b v	19,73	20,26	0,53	2,67%	<a href="#">here</a>	
1.A.3.c	0,42	0,36	-0,06	-15,42%	<a href="#">here</a>	
1.A.3.d ii	1,08	1,19	0,11	10,50%	<a href="#">here</a>	
1.A.3.e i	0,01	0,01	0,00	0,45%	<a href="#">here</a>	
1.A.4.a i	3,82	3,42	-0,40	-10,52%	<a href="#">here</a>	
1.A.4.a ii	1,14	0,90	-0,24	-21,08%	<a href="#">here</a>	
1.A.4.b i	32,07	34,96	2,89	9,01%	<a href="#">here</a>	
1.A.4.b ii	10,76	10,97	0,21	1,92%	<a href="#">here</a>	
1.A.4.c i	0,79	0,78	-0,01	-1,47%	<a href="#">here</a>	
1.A.4.c ii	9,39	9,45	0,07	0,69%	<a href="#">here</a>	
1.A.4.c iii	0,130	0,134	0,004	2,70%	<a href="#">here</a>	
1.A.5.a	0,06	0,06	0,00	1,28%	<a href="#">here</a>	
1.A.5.b	1,11	1,11	0,00	0,01%	<a href="#">here</a>	
1.B.1.a	0,002	0,006	0,004	260%	<a href="#">here</a>	
1.B.2.a iv	12,27	12,27	0,00	-0,01%		
1.B.2.a v	16,71	16,60	-0,11	-0,66%		
1.B.2.b	4,91	4,89	-0,02	-0,36%		
<b>NFR 2 - IPPU</b>	<b>586,01</b>	<b>584,84</b>	<b>-1,17</b>	<b>-0,20%</b>	sub-category chapters	
2.G	2,25	1,12	-1,13	-50,27%	<a href="#">here</a>	
2.H.1	3,66	3,66	0,00	0,00%	<a href="#">here</a>	
2.H.2	15,78	15,74	-0,04	-0,22%	<a href="#">here</a>	
<b>NFR 3 - Agriculture</b>	<b>324,31</b>	<b>305,68</b>	<b>-18,63</b>	<b>-5,74%</b>	sub-category chapters	
3.B.1.a	169,97	160,81	-9,16	-5,39%	<a href="#">here</a>	
3.B.1.b	101,42	91,95	-9,47	-9,34%	<a href="#">here</a>	



absolute changes in emissions reported for 2018					Submission 2020	Submission 2021	Difference	Reasoning
<p>A bar chart titled 'absolute changes in emissions reported for 2018'. The vertical axis is labeled 'Absolute changes, in [kt]' and ranges from -30 to 20. The horizontal axis lists five categories: NATIONAL TOTAL, Energy, IPPU, Agriculture, and Waste. The bars are: NATIONAL TOTAL (dark blue, -18,00), Energy (red, 2,43), IPPU (light blue, -1,13), Agriculture (green, -19,26), and Waste (grey, -0,05). A legend at the bottom identifies the colors for each category.</p>								
<b>NFR Code</b>	<b>[kt]</b>				<b>relative</b>		<b>see description and reasoning in:</b>	
<b>NATIONAL TOTAL</b>	<b>1.140,32</b>	<b>1.125,02</b>	<b>-15,31</b>	<b>-1,34%</b>	<b>sub-category chapters</b>			
<b>NFR 1 - Energy</b>	<b>210,09</b>	<b>214,58</b>	<b>4,49</b>	<b>2,14%</b>	<b>sub-category chapters</b>			
<b>NFR 5 - Waste</b>	<b>19,91</b>	<b>19,91</b>	<b>0,00</b>	<b>0,00%</b>	<b>sub-category chapters</b>			
5.A	3,99	3,98	-0,01	0,30%	<a href="#">here</a>			
5.D.2	NA	0,01	0,01		<a href="#">here</a>			
<b>NFR 6 - Other</b>	<b>NA</b>							