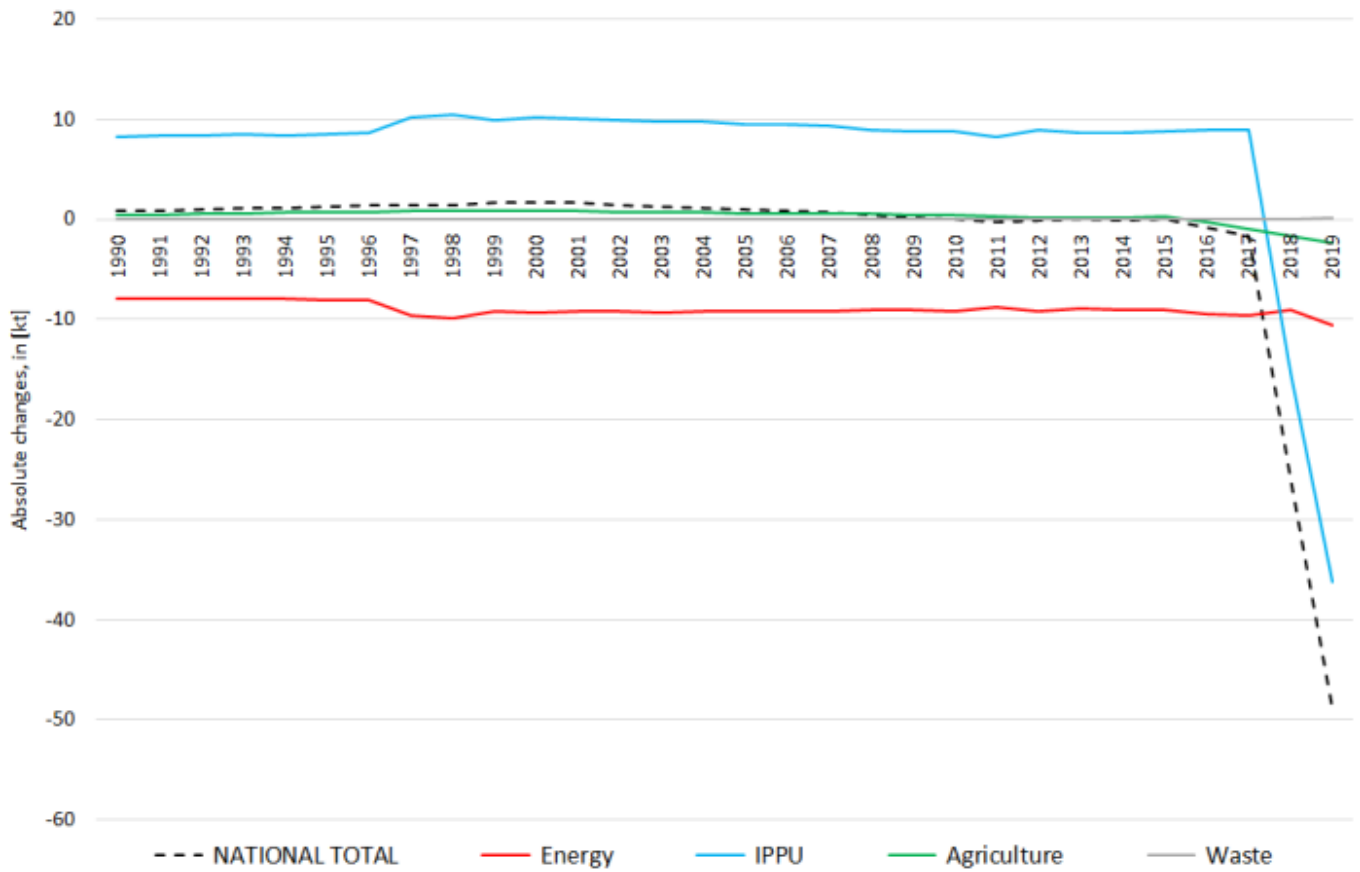
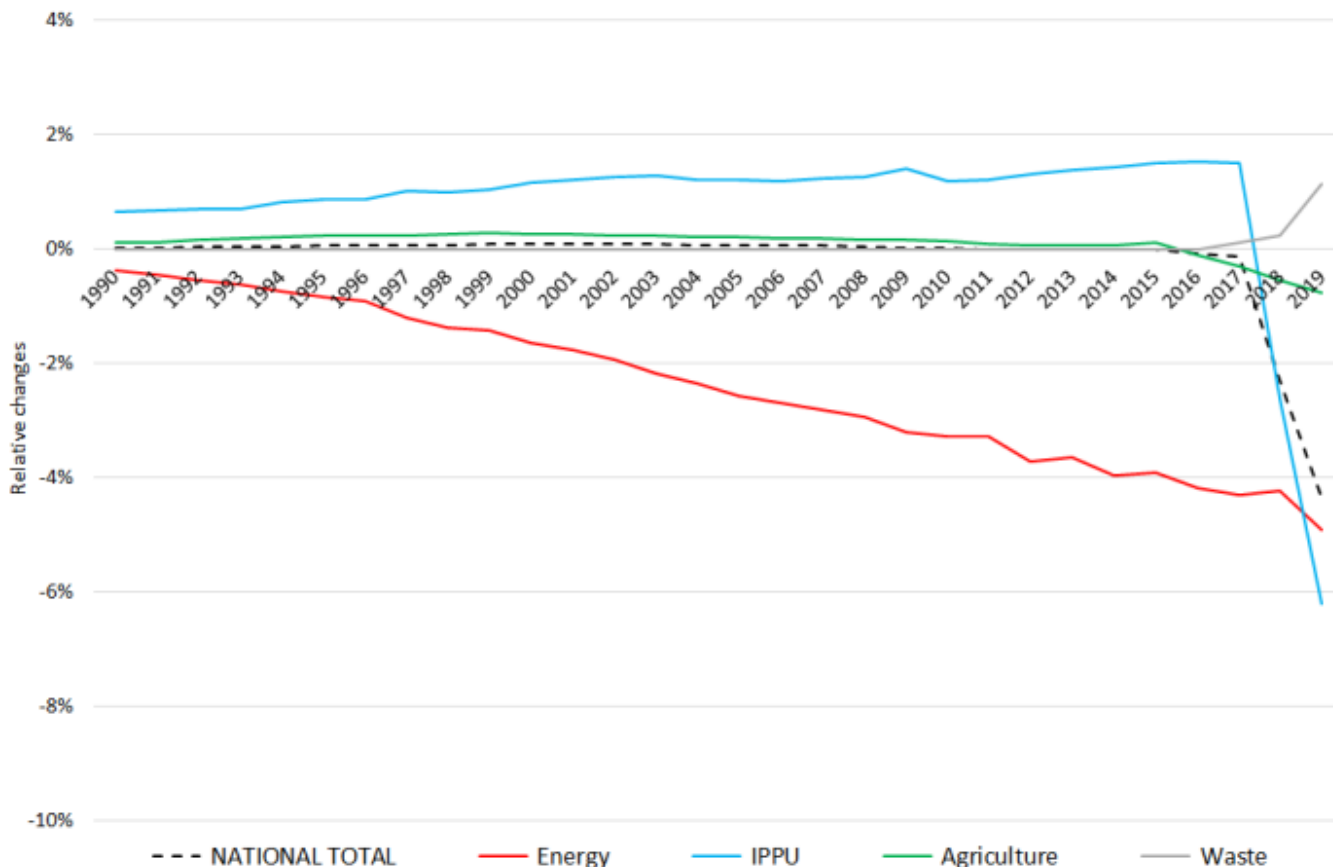


# Recalculations - Non-Methane Volatile Organic Compounds

Revision of NMVOC emissions over time





The insignificant changes within the **National Total reported for 1990 (+0.73 kt | +0.02 %)** are dominated by a re-allocation of **8.09 kt** of NMVOCs from NFR sub-categorie **1.B.2.a iv** to **2.B.10.b**, with the strongest percental change occurring for **1.A.4.c iii** with minus 55 %.

Table 1: Changes in emission estimates for 1990

NFR Sector	Submission 2021	Submission 2022	Difference		Reasoning
	[kt]		absolute	relative	
<b>NATIONAL TOTAL</b>	<b>3.890,85</b>	<b>3.891,58</b>	<b>0,73</b>	<b>0,02%</b>	see description and reasoning in: sub-category chapters
<b>NFR 1 - Energy</b>	<b>2.170,57</b>	<b>2.162,57</b>	<b>-8,00</b>	<b>-0,37%</b>	sub-category chapters
1.A.3.a i(i)	0,80	0,80	0,00	-0,49%	<a href="#">here</a>
1.A.3.a ii(i)	0,50	0,42	-0,08	-15,49%	<a href="#">here</a>
1.A.3.b i	1.119,06	1.119,06	0,00	0,00%	<a href="#">here</a>
1.A.3.b ii	39,73	39,73	0,00	0,00%	<a href="#">here</a>
1.A.3.b iii	60,10	60,12	0,02	0,03%	<a href="#">here</a>
1.A.3.c	4,19	4,22	0,03	0,718%	<a href="#">here</a>
1.A.3.d ii	3,20	3,27	0,07	2,106%	<a href="#">here</a>
1.A.4.b ii	12,48	12,52	0,04	0,32%	<a href="#">here</a>
1.A.4.c iii	0,04	0,02	-0,02	-54,62%	<a href="#">here</a>
1.A.5.b	21,32	21,30	-0,02	-0,10%	<a href="#">here</a>
1.B.2.a iv	81,24	73,15	-8,09	-9,96%	
1.B.2.a v	87,73	87,79	0,05	0,06%	
<b>NFR 2 - IPPU</b>	<b>1.283,34</b>	<b>1.291,63</b>	<b>8,30</b>	<b>0,65%</b>	sub-category chapters
2.B.10.b	NA	8,09	8,09		<a href="#">here</a>
2.D.3.g	70,00	69,59	-0,41	-0,58%	<a href="#">here</a>
2.D.3.i	241,57	242,18	0,61	0,25%	
<b>NFR 3 - Agriculture</b>	<b>398,49</b>	<b>398,93</b>	<b>0,44</b>	<b>0,11%</b>	sub-category chapters
3.B.1.b	153,72	154,16	0,44	0,29%	<a href="#">here</a>
<b>NFR 5 - Waste</b>	<b>38,45</b>	<b>38,45</b>	<b>0,00</b>	<b>0,00%</b>	
<b>NFR 6 - Other</b>	NA				

Changes within the **National Total reported for 2019 (-49kt | -4.37%)** result from several more or less significant

revisions in **NFR1, 2 3 and 4.**

The strongest percental change occurs for **NFR 1.A.4.c iii with minus 43 %.**

Table 2: Changes in emission estimates for 2019

NFR Sector	Submission 2021	Submission 2022	Difference		Reasoning
	[kt]			relative	
<b>NATIONAL TOTAL</b>	<b>1.121,23</b>	<b>1.072,23</b>	<b>-49,00</b>	<b>-4,37%</b>	<b>see description and reasoning in:</b>
<b>NFR 1 - Energy</b>	<b>214,71</b>	<b>204,04</b>	<b>-10,67</b>	<b>-4,97%</b>	<b>sub-category chapters</b>
1.A.1.a	7,08	7,17	0,10	1,35%	<a href="#">here</a>
1.A.1.c	0,38	0,39	0,01	2,56%	<a href="#">here</a>
1.A.2.a	0,244	0,259	0,02	6,33%	<a href="#">here</a>
1.A.2.b	0,082	0,079	-0,003	-3,80%	<a href="#">here</a>
1.A.2.e	0,024	0,023	-0,001	-2,51%	<a href="#">here</a>
1.A.2.g vii	3,42	3,38	-0,04	-1,12%	<a href="#">here</a>
1.A.2.g viii	5,58	5,56	-0,02	-0,35%	<a href="#">here</a>
1.A.3.a i(i)	0,69	0,65	-0,04	-5,96%	<a href="#">here</a>
1.A.3.a ii(i)	0,52	0,37	-0,15	-28,40%	<a href="#">here</a>
1.A.3.b i	47,41	46,02	-1,40	-2,94%	<a href="#">here</a>
1.A.3.b ii	1,47	1,45	-0,02	-1,09%	<a href="#">here</a>
1.A.3.b iii	2,71	2,73	0,01	0,46%	<a href="#">here</a>
1.A.3.b iv	15,02	14,85	-0,16	-1,10%	<a href="#">here</a>
1.A.3.b v	22,62	22,25	-0,38	-1,66%	<a href="#">here</a>
1.A.3.c	0,36	0,39	0,04	9,95%	<a href="#">here</a>
1.A.3.d ii	1,13	1,08	-0,05	-4,12%	<a href="#">here</a>
1.A.4.a i	3,71	3,79	0,08	2,08%	<a href="#">here</a>
1.A.4.a ii	0,880	0,876	-0,004	-0,48%	<a href="#">here</a>
1.A.4.b i	34,77	34,95	0,19	0,54%	<a href="#">here</a>
1.A.4.b ii	10,759	10,166	-0,59	-5,51%	<a href="#">here</a>
1.A.4.c i	0,80	0,82	0,02	2,39%	<a href="#">here</a>
1.A.4.c ii	9,27	9,18	-0,09	-0,97%	<a href="#">here</a>
1.A.4.c iii	0,026	0,015	-0,011	-42,97%	<a href="#">here</a>
1.A.5.a	0,05	0,07	0,02	33,84%	<a href="#">here</a>
1.A.5.b	1,35	1,34	-0,02	-1,15%	<a href="#">here</a>
1.B.1.b	3,26	3,36	0,10	3,05%	<a href="#">here</a>
1.B.2.a i	5,820	5,821	0,001	0,01%	
1.B.2.a iv	12,23	3,91	-8,32	-68,02%	
1.B.2.a v	16,82	16,87	0,06	0,34%	
1.B.2.b	4,95	4,93	-0,02	-0,34%	
1.B.2.c	0,3591	0,3592	0,0001	0,01%	
<b>NFR 2 - IPPU</b>	<b>583,38</b>	<b>547,17</b>	<b>-36,21</b>	<b>-6,21%</b>	<b>sub-category chapters</b>
2.A.3	0,92	0,62	-0,30	-33,01%	<a href="#">here</a>
2.A.6	0,096	0,096	0,00	0,04%	<a href="#">here</a>
2.D.3.a	91,18	78,43	-12,75	-13,99%	<a href="#">here</a>
2.D.3.d	199,98	173,72	-26,25	-13,13%	<a href="#">here</a>
2.D.3.e	40,56	39,47	-1,08	-2,67%	<a href="#">here</a>
2.D.3.g	51,57	49,35	-2,22	-4,31%	<a href="#">here</a>
2.D.3.h	63,59	53,15	-10,45	-16,43%	<a href="#">here</a>
2.D.3.i	97,93	106,46	8,53	8,71%	<a href="#">here</a>
<b>NFR 3 - Agriculture</b>	<b>304,39</b>	<b>302,05</b>	<b>-2,33</b>	<b>-0,77%</b>	<b>sub-category chapters</b>
3.B.1.a	160,84	161,00	0,16	0,10%	<a href="#">here</a>
3.B.1.b	90,15	87,97	-2,18	-2,42%	<a href="#">here</a>
3.B.4.d	0,080	0,082	0,002	2,35%	<a href="#">here</a>
3.B.4.e	2,81	3,00	0,19	6,68%	<a href="#">here</a>
3.B.4.g i	8,89	8,88	-0,01	-0,11%	<a href="#">here</a>
3.B.4.g ii	10,13	10,02	-0,11	-1,06%	<a href="#">here</a>

	Submission 2021	Submission 2022	Difference		Reasoning
<b>NFR Sector</b>	<b>[kt]</b>			<b>relative</b>	<b>see description and reasoning in:</b>
<b>NATIONAL TOTAL</b>	<b>1.121,23</b>	<b>1.072,23</b>	<b>-49,00</b>	<b>-4,37%</b>	<b>sub-category chapters</b>
<b>NFR 1 - Energy</b>	<b>214,71</b>	<b>204,04</b>	<b>-10,67</b>	<b>-4,97%</b>	<b>sub-category chapters</b>
3.B.4.g iii	6,04	5,76	-0,29	-4,74%	<a href="#">here</a>
3.B.4.g iv	2,65	2,55	-0,10	-3,85%	<a href="#">here</a>
<b>NFR 5 - Waste</b>	<b>18,75</b>	<b>18,97</b>	<b>0,21</b>	<b>1,13%</b>	<b>sub-category chapters</b>
5.A	3,788	3,786	-0,001	-0,04%	<a href="#">here</a>
5.C.2	14,80	15,02	0,21	1,44%	<a href="#">here</a>
<b>NFR 6 - Other</b>	<b>NA</b>				