

1.A.4.b i - Residential: Stationary Combustion

Short description



In source category 1.A.4.b.i. - *Other: Residential* emissions from small residential combustion installations are reported.

Category Code	Method					AD					EF				
1.A.4.b.i	T2, T3					NS					CS, D				
	NO _x	NM VOC	SO ₂	NH ₃	PM _{2.5}	PM ₁₀	TSP	BC	CO	PB	Cd	Hg	Diox	PAH	HCB
Key Category:	L/-	L/T	L/T	-/-	L/T	L/T	L/T	L/-	L/T	-/-	-/-	L/-	L/-	L/T	L/-

T = key source by Trend **L** = key source by Level

Methods	
D	Default
T1	Tier 1 / Simple Methodology *
T2	Tier 2*
T3	Tier 3 / Detailed Methodology *
C	CORINAIR
CS	Country Specific
M	Model

* as described in the EMEP/EEA Emission Inventory Guidebook - 2019, in the group specific chapters.

AD - Data Source for Activity Data	
NS	National Statistics
RS	Regional Statistics
IS	International Statistics
PS	Plant Specific data
As	Associations, business organisations
Q	specific Questionnaires (or surveys)
M	Model / Modelled
C	Confidential
EF - Emission Factors	
D	Default (EMEP Guidebook)
C	Confidential
CS	Country Specific

PS	Plant Specific data
M	Model / Modelled

Methodology

Activity data

For further information on activity data please refer to the [superordinate chapter](#) on small stationary combustion.

Emission factors

For further information on the emission factors applied please refer to the [superordinate chapter](#) on small stationary combustion.

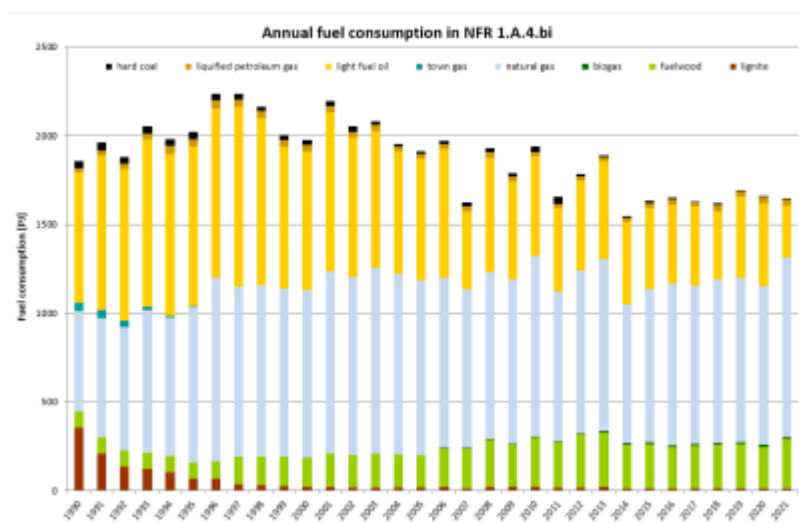
Table 1: Emission factors for domestic combustion installations

Pollutant	NO _x	SO _x	CO	NMVOC	TSP	PM ₁₀	PM _{2.5}	PAH	PCDD/F
Fuel	[kg/TJ]							[mg/TJ]	[µg/TJ]
Hard Coal	61.1	385.5	3,422	67.0	18.5	17.6	15.7	19,215	20.8
Hard Coal Coke	40.0	458.6	5,448	11.5	16.6	15.8	14.2	32,700	45.7
Hard Coal Briquettes	50.4	563.5	4,875	184.1	265.4	252.8	227.3	165,858	20.2
Lignite Briquettes	87.0	421.6	2,349	158.0	79.5	76.5	68.2	148,329	24.8
Natural Wood	69.9	8.1	1,632	126.6	75.9	74.3	70.7	202,265	45.2
Light Fuel Oil	22.1	3.3	11.8	1.5	0.9	0.9	0.9	310.0	2.2
Natural Gas	20.5	0.1	13.2	0.6	0.03	0.03	0.03	3.08	2.1

TSP and PM emission factors are to a large extent based on measurements without condensed compounds, according to CEN-TS 15883, annex I.

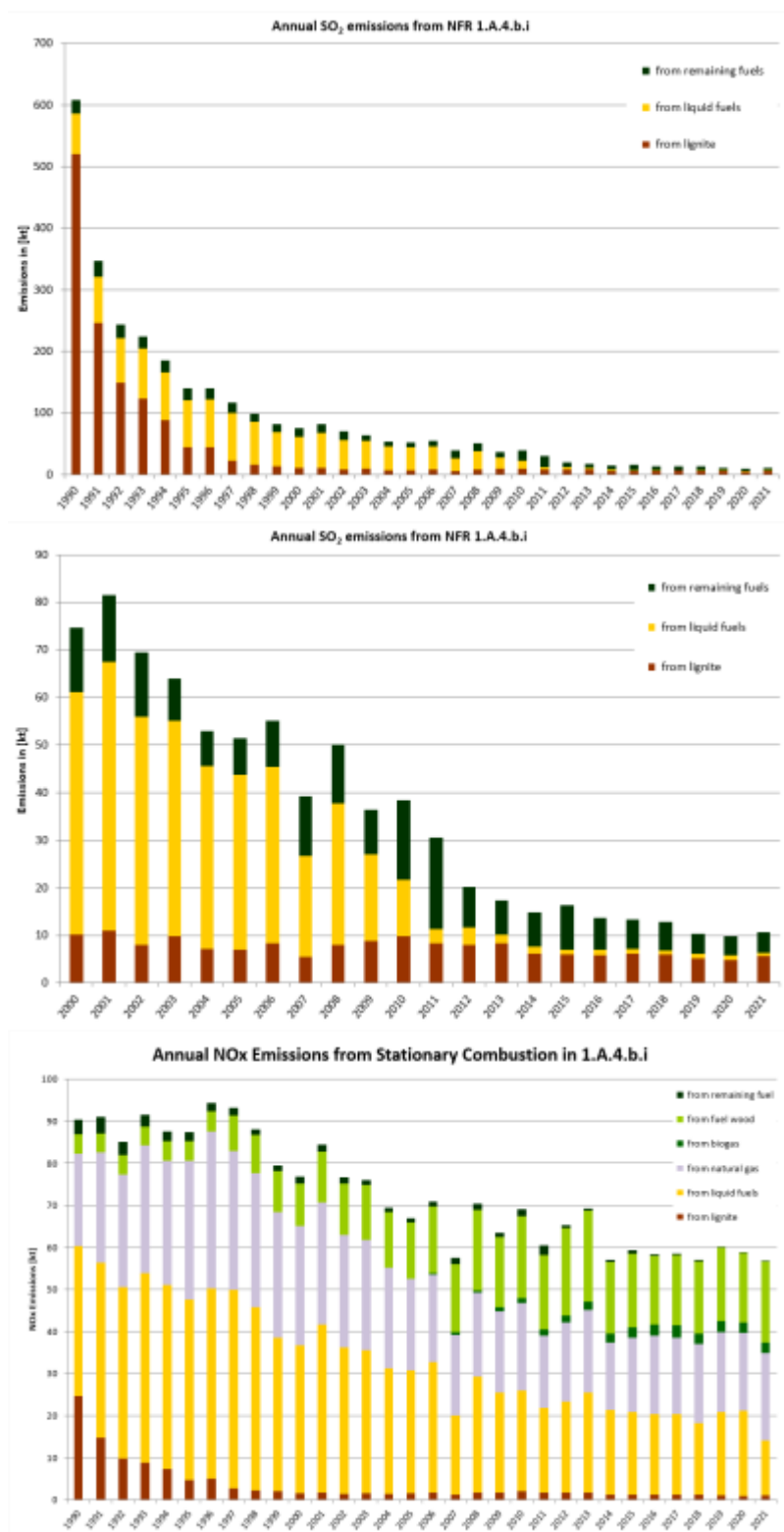
Trend Discussion for Key Sources

The following charts give an overview and assistance for explaining dominant emission trends of selected pollutants.



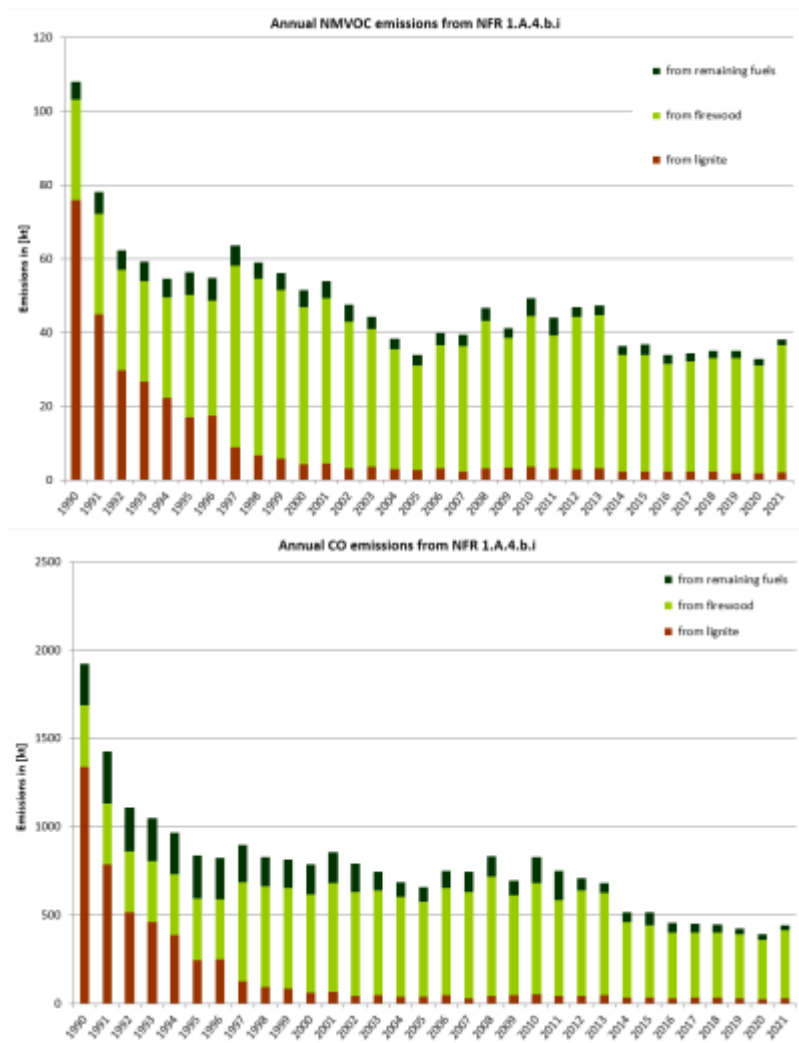
Annual fluctuations of all fuel types in source category 1.A.4.b.i depend on heat demand subject to winter temperatures. Between 1990 and 2002 the fuel use changed considerably from coal & lignite to natural gas. The consumption of light heating oil decreased as well. As the activity data for light heating oil is based on the sold amount, it fluctuates due to fuel prices and changing storage amounts. In 2010 and 2013 fuel consumption was particularly high due to the cold winter. The higher fuel consumption in 2014 - 2017 is a result of lower temperatures during the heating period. In 2019 and 2020 the fuel demand increased driven by increased heating-oil sales due to decreasing oil prices.

Sulfur Oxides & Nitrogen Oxides - SO_x & NO_x



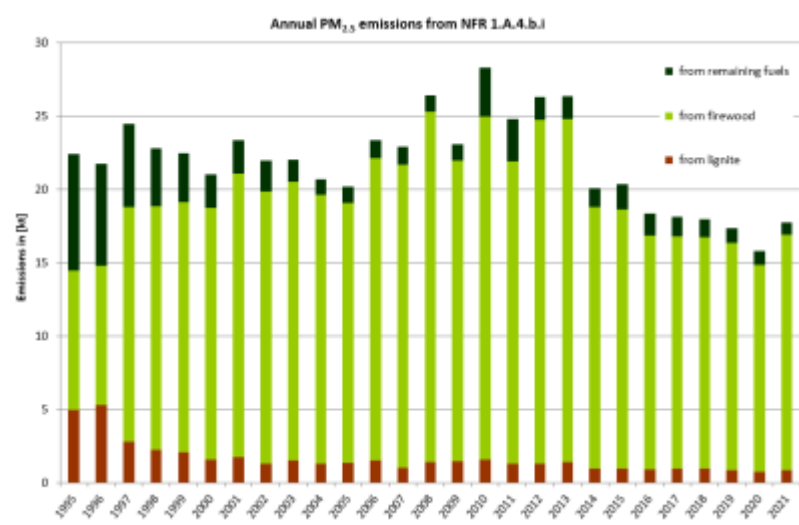
SO₂ emissions decrease due to the fuel switch from coal (especially lignite with a high emission factor) to natural gas with a lower emission factor. A further SO₂ reduction from 2008 onwards can be explained by the increasing use of low-sulfur fuel oil. Nowadays almost exclusively low-sulfur fuel oil is used. In contrast to SO₂ emissions NO_x emission trend is less influenced by fuel characteristics but more by combustion conditions. Therefore NO_x emission values shows lower reduction. During the last years the use of firewood gain influence.

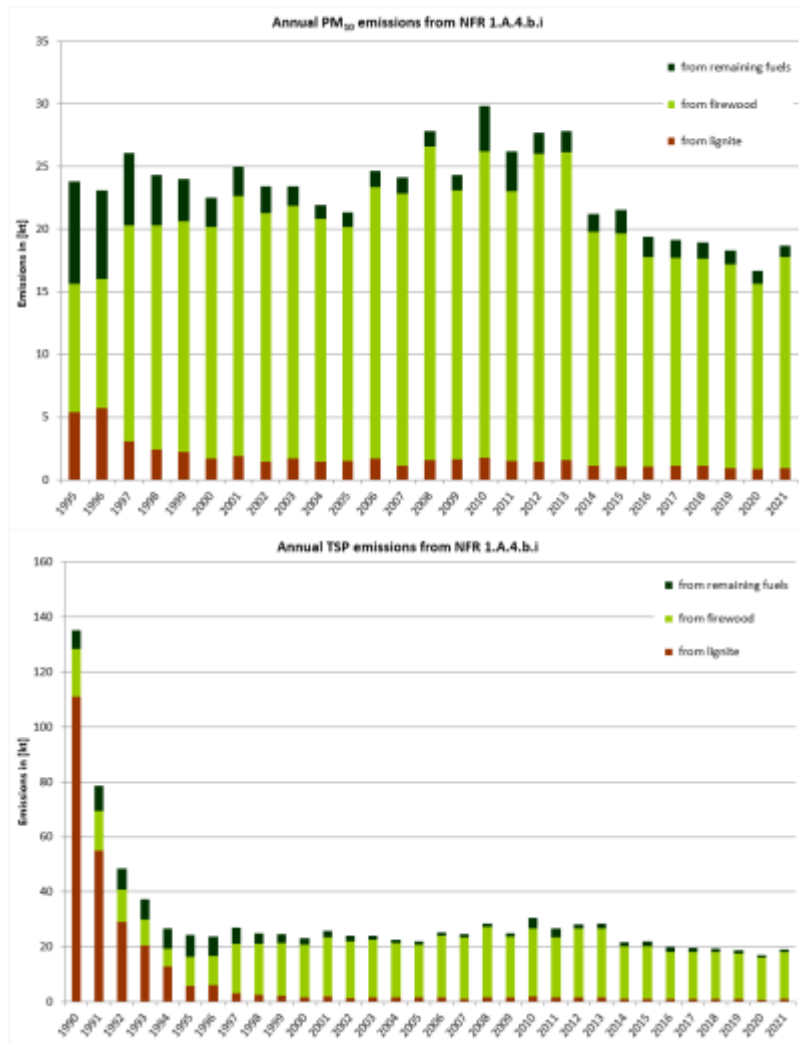
Non-Methane Volatile Organic Compounds & Carbon Monoxide - NMVOC & CO



Main driver of the NMVOC emission trend is the decreasing lignite consumption. In the residential sector the emission trend is also affected by the increasing use of firewood with high emission factors which levels off the emission reduction. The explanation for decreasing carbon monoxide emissions is similar to the trend discussion for SO_2 and NMVOC. Since 1990 the fuel use changed from solid fuels, which causes high CO-emissions, to gaseous fuels, which produce less CO emissions.

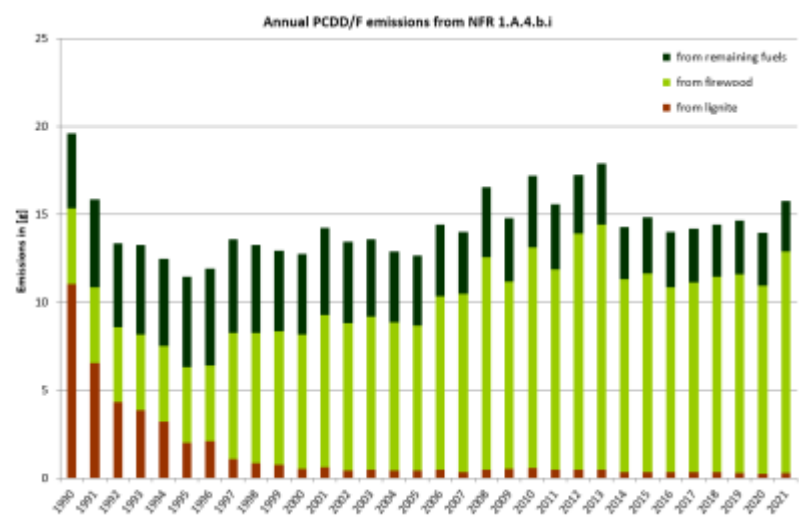
Particulate Matter - PM_{2.5} & PM₁₀ & TSP

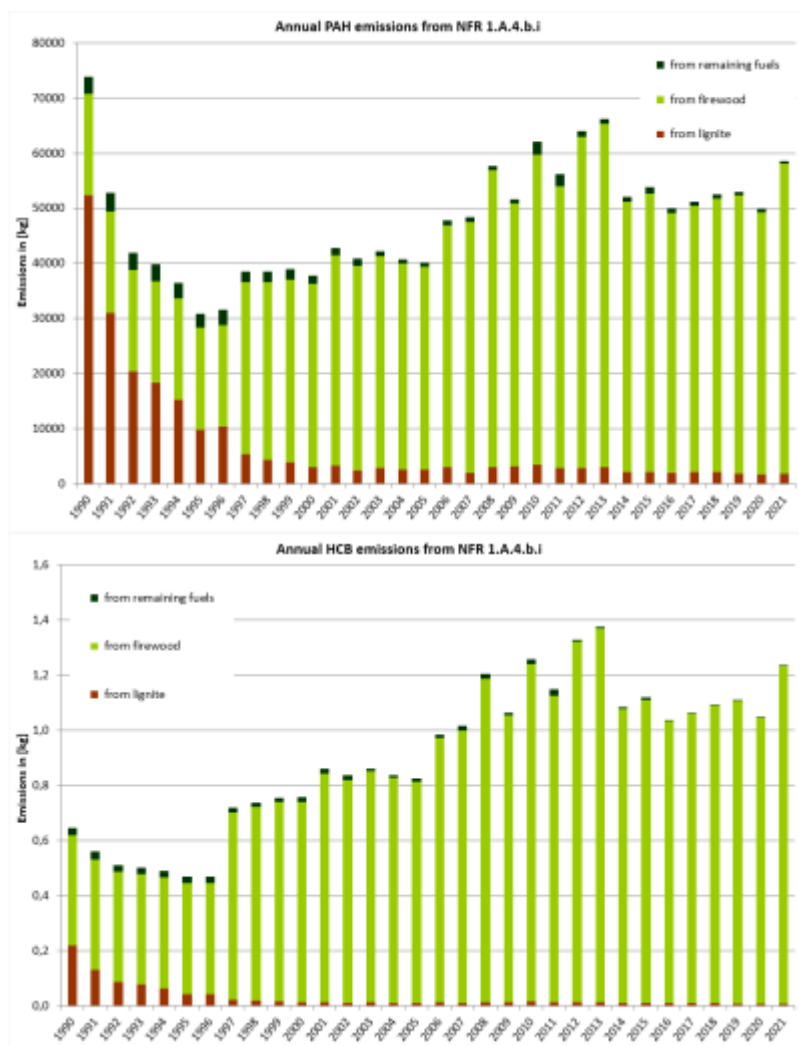




The emission trend for PM_{2.5}, PM₁₀, and TSP are also influenced severely by decreasing coal consumption in small combustion plants, particularly in the period from 1990 to 1994. Since 1995 the emission trend didn't change hardly. Increasing emissions in the last years are caused by the rising wood combustion in residential fire places and stoves.

Persistent Organic Pollutants





The main driver of the POP emission trend are coal and fuelwood. PCDD/F emissions from coal fired furnaces are declining but the effect is retarded by increasing wood consumption. The same influencing variables apply accordingly to the PAH emission trends. The emission trend of HCB shows a high dominance of emissions from wood-burning. Emission factors for HCB are constant from 1990 to 2020. Furthermore, the difference between the EFs for coal and fuelwood is very big. Therefore, the emission trend depends solely on the development of fuelwood consumption. Regarding HCB emissions the inventory is incomplete. This is one of the reasons for the importance of emissions from small combustion plants. In 2010, 2012 and 2013 emissions are particularly high because of the cold winter. It's known that in spite of the existing legislation, an unknown quantity of waste wood is illegally burnt. However, it's impossible to ascertain the fuel quantity, since the use of waste wood for heating purposes in small combustion plants it's illegal. Therefore all emission factors and emissions refer to the use of untreated wood.

Recalculations

Recalculations were necessary for 2019 due to the implementation of the now finalised National Energy Balance.

Furthermore, compared to submission 2021, PAH emissions have been recalculated for all small combustion sources due to a revision of emission factors applied.



For specific **information on recalculated emission estimates for Base Year and 2019**, please see the pollutant specific recalculation tables following chapter [8.1 - Recalculations](#).

Planned improvements

There is a running Project on new emission factors for small combustion plants using updated data from the chimney sweepers and new measurement data.