

## 2.A.3 - Glass Production

### Short description

Category Code	Method					AD					EF				
2.A.3	T2					AS					CS				
Key Category	SO <sub>2</sub>	NO <sub>x</sub>	NH <sub>3</sub>	NM VOC	CO	BC	Pb	Hg	Cd	Diox	PAH	HCB	TSP	PM <sub>10</sub>	PM <sub>2.5</sub>
2.A.3	L/-	-/-	-/-	-/-	-	-	-/-	-	-/-	-	-	-	-/-	-/-	-/-

**T** = key source by Trend **L** = key source by Level

Methods	
<b>D</b>	Default
<b>T1</b>	Tier 1 / Simple Methodology *
<b>T2</b>	Tier 2*
<b>T3</b>	Tier 3 / Detailed Methodology *
<b>C</b>	CORINAIR
<b>CS</b>	Country Specific
<b>M</b>	Model

\* as described in the EMEP/EEA Emission Inventory Guidebook - 2019, in the group specific chapters.

AD - Data Source for Activity Data	
<b>NS</b>	National Statistics
<b>RS</b>	Regional Statistics
<b>IS</b>	International Statistics
<b>PS</b>	Plant Specific data
<b>As</b>	Associations, business organisations
<b>Q</b>	specific Questionnaires (or surveys)
<b>M</b>	Model / Modelled
<b>C</b>	Confidential
EF - Emission Factors	
<b>D</b>	Default (EMEP Guidebook)
<b>C</b>	Confidential
<b>CS</b>	Country Specific
<b>PS</b>	Plant Specific data
<b>M</b>	Model / Modelled

Germany's glass industry produces a wide range of different glass types that differ in their chemical composition. Germany's glass sector comprises the following sub-sectors: container glass, flat glass, domestic glass, special glass and mineral fibres (glass and stone wool). The largest production quantities are found in the sectors of container glass and flat glass. Further processing and treatment of glass and glass objects are not considered.

### Methodology

The emissions are calculated via a higher Tier method resembling a Tier 2 method, as the activity rates are tied to specific emission factors for different glass types.

### Activity data

The production figures are taken from the regularly appearing annual reports of the [Federal Association of the German Glass Industry](#) (Bundesverband Glasindustrie; BV Glas). "Production" refers to the amount of glass produced, which is considered to be equivalent to the amount of glass melted down.

## Emission factors

The procedure used to determine emission factors for the various glass types involved and the pertinent emissions is described in detail in reports of research projects (Report-No. 001264, search "UBA-FB 001264" in (<https://doku.uba.de> ⇒ OPAC ⇒ Signatur). The emission factors were calculated for the various industry sectors. The factors vary annually in keeping with industry monitoring, not only as steady trends, but as time ranges. Ranges below are given as averages over all glass types for main pollutants, but as averages over time for heavy metals:

Table 1: Overview of applied emission factors

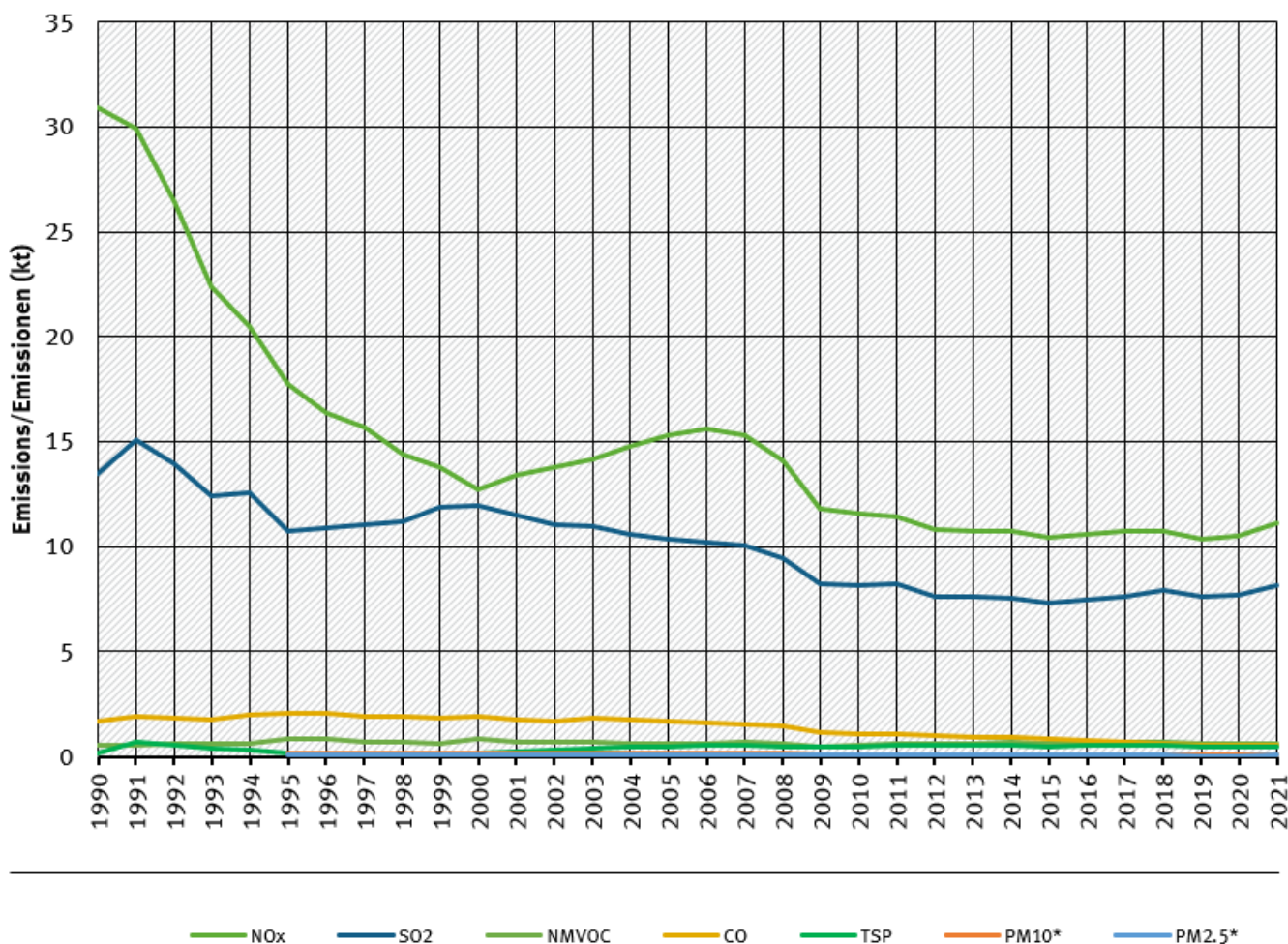
Pollutant	Products	EF	Unit	Current trend
<b>NO<sub>x</sub></b>	all glass types	1.0-3.4	kg/t	constant
<b>SO<sub>2</sub></b>	all glass types	0.39-1.9	kg/t	constant
<b>NM VOC</b>	all glass types	0.96	kg/t	constant
<b>NH<sub>3</sub></b>	two glass types	0.03/0.7	kg/t	constant
<b>TSP</b>	all glass types	0.02-0.04	kg/t	constant
<b>PM<sub>10</sub></b>	all glass types	0.01-0.03	kg/t	constant
<b>PM<sub>2.5</sub></b>	all glass types	0.01-0.02	kg/t	constant
<b>As</b>	container glass	0.079	g/t	constant
<b>Pb</b>	container glass	0.41	g/t	constant
<b>Cd</b>	container glass	0.04	g/t	constant
<b>Cr</b>	container glass	0.04	g/t	constant
<b>Cu</b>	container glass	0.10	g/t	constant
<b>Ni</b>	container glass	0.014	g/t	constant
<b>Se</b>	container glass	1.4	g/t	constant

## Trends in emissions

Trends in emissions correspond to trends of emission factors and of production development. The resulting trends are not constant, as a result of different EF for various glass types. So emissions of SO<sub>2</sub> couldn't decrease due to increased production Level of a relevant product.

## trends of emissions of glass industry

### Emissions by pollutant / Emissionen nach Schadstoff



\* Base Year for PM = 1995 / Basisjahr für Feinstäube (PM) ist 1995

Source: German Emission Inventory (15.01.2023)

### Emission trends in NFR 2.A.3

## Recalculations

Recalculations were necessary due to updated activity data for the last reported year.



For pollutant-specific information on recalculated emission estimates for Base Year and 2018, please see the pollutant specific recalculation tables following [chapter 8.1 - Recalculations](#).

## Planned improvements

For purposes of updating the EF project has started in 2019, results from 2020 <sup>1)</sup> are planned to be use for Submission 2022.

<sup>1)</sup> ReFoPlan FKZ - 3719 52 1010: „Überarbeitung der Emissionsfaktoren für Luftschadstoffe in den Branchen

---

Zementklinkerproduktion und Glasherstellung“