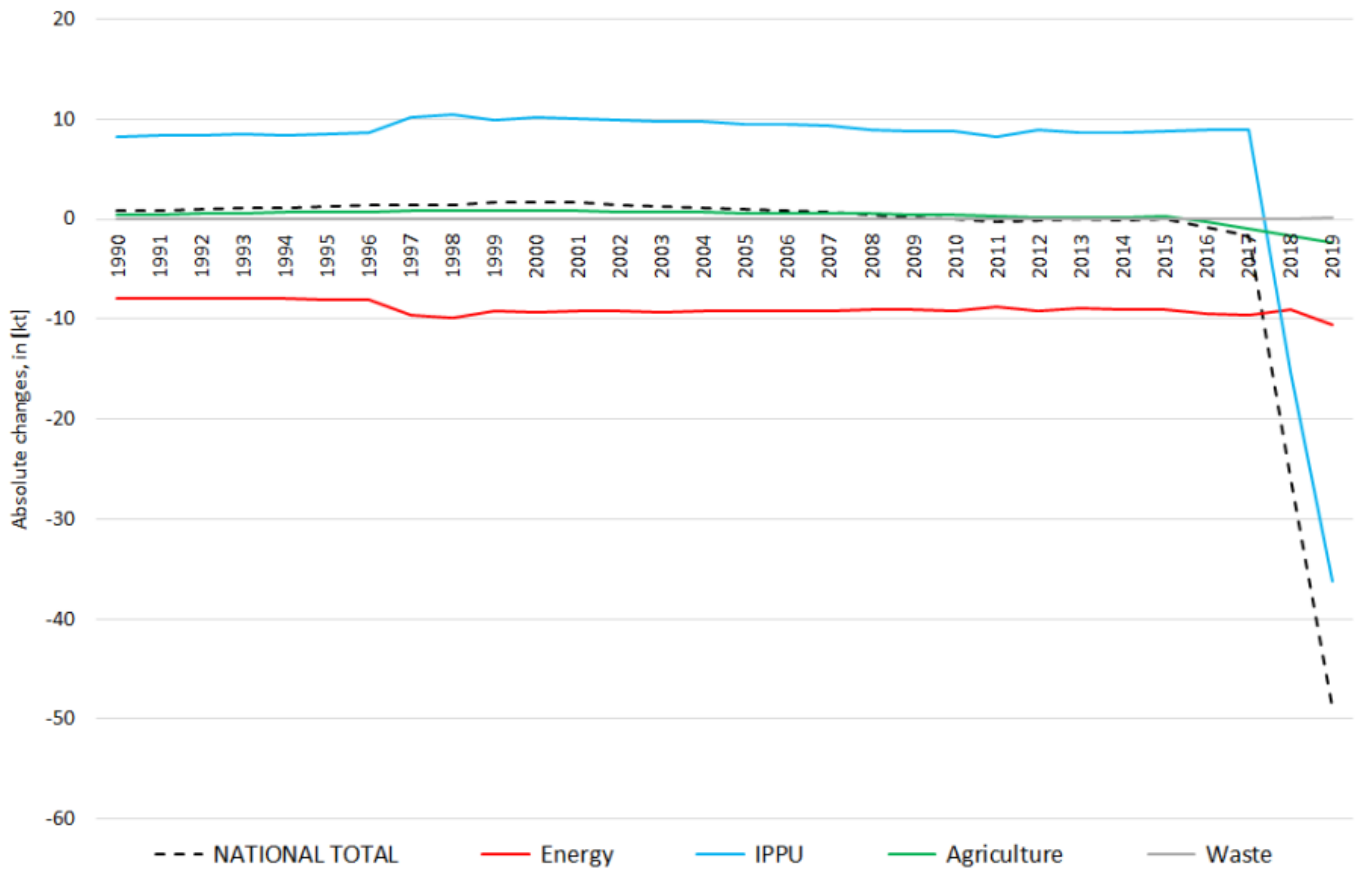
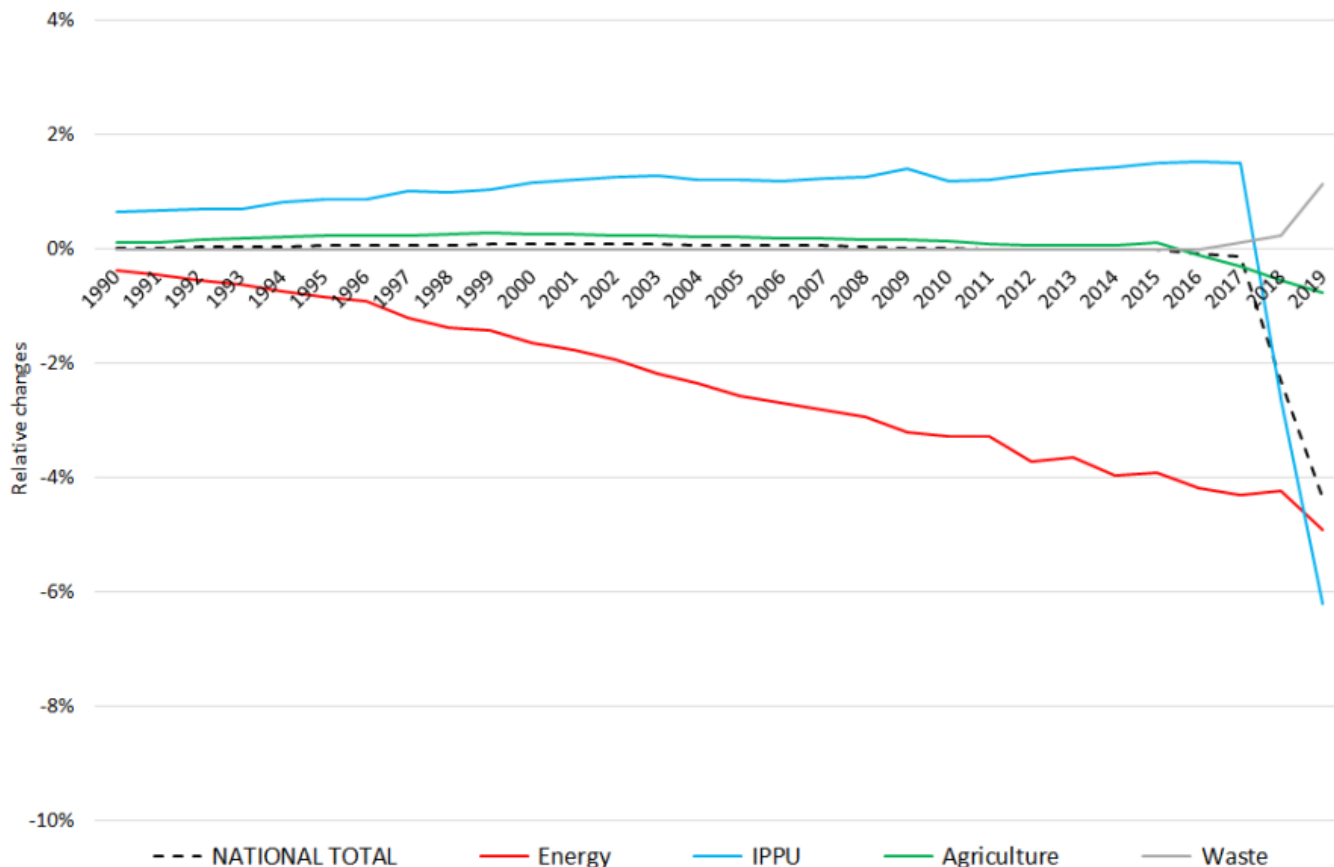


Recalculations - Non-Methane Volatile Organic Compounds

Revision of NMVOC emissions over time





The significant changes within the **National Total reported for 1990 (+594 kt | +17.26 %)**

Table 1: Changes in emission estimates for 1990

NFR Code	Submission 2020	Submission 2021	Difference		Reasoning see description and reasoning in:
	[kt]			relative	
NATIONAL TOTAL	4.033,30	3.890,85	-142,45	-3,53%	sub-category chapters
NFR 1 - Energy	2.262,13	2.170,57	-91,55	-4,05%	sub-category chapters
1.A.2.g vii	9,83	9,95	0,12	1,24%	here
1.A.2.g viii	5,95	5,95	0,00	0,00%	here
1.A.3.a i(i)	0,77	0,80	0,03	3,79%	here
1.A.3.a ii(i)	1,75	0,50	-1,25	-71,55%	here
1.A.3.b i	1.190,67	1.119,06	-71,61	-6,01%	here
1.A.3.b ii	44,51	39,73	-4,78	-10,73%	here
1.A.3.b iii	57,71	60,10	2,39	4,14%	here
1.A.3.b iv	62,35	58,50	-3,86	-6,18%	here
1.A.3.b v	214,70	201,42	-13,28	-6,18%	here
1.A.4.a ii	2,34	2,35	0,01	0,47%	here
1.A.4.b ii	12,22	12,48	0,26	2,09%	here
1.A.4.c ii	31,72	32,17	0,45	1,42%	here
1.B.2.a v	87,77	87,73	-0,03	-0,04%	
NFR 2 - IPPU	1.285,62	1.283,34	-2,28	-0,18%	sub-category chapters
2.G	3,90	1,62	-2,28	-58,42%	here
NFR 3 - Agriculture	447,13	398,49	-48,64	-10,88%	sub-category chapters
3.B.1.a	231,88	196,61	-35,27	-15%	here
3.B.1.b	167,09	153,72	-13,37	-8,00%	here
NFR 5 - Waste	38,42	38,45	0,03	0,07%	sub-category chapters
5.D.2	NA	0,03	0,03		here
NFR 6 - Other	NA				

Changes within the **National Total reported for 2018 (-15.31 kt | -1.34 %)** are dominated by decreased emission estimates **NFR 3**.

In **NFR 5**, emissions have been re-allocated with no impact on the sector's total emissions.
The strongest relative change occurs for **NFR 2.G with minus 50 %**.

Table 2: Changes in emission estimates for 2018

NFR Code	Submission 2020	Submission 2021	Difference		Reasoning
	[kt]			relative	see description and reasoning in:
NATIONAL TOTAL	1.140,32	1.125,02	-15,31	-1,34%	sub-category chapters
NFR 1 - Energy	210,09	214,58	4,49	2,14%	sub-category chapters
1.A.1.a	7,95	8,06	0,11	1,37%	here
1.A.1.b	0,75	0,90	0,15	19,64%	here
1.A.1.c	0,32	0,39	0,07	22,37%	here
1.A.2.a	0,255	0,259	0,004	1,50%	here
1.A.2.b	0,08	0,08	0,00	2,51%	here
1.A.2.e	0,02	0,02	0,002	8,50%	here
1.A.2.g vii	3,63	3,62	-0,01	-0,26%	here
1.A.2.g viii	6,04	5,65	-0,38	-6,37%	here
1.A.3.a i(i)	0,79	0,72	-0,06	-8,24%	here
1.A.3.a ii(i)	0,56	0,49	-0,07	-12,86%	here
1.A.3.b i	46,43	47,87	1,43	3,09%	here
1.A.3.b ii	1,57	1,49	-0,09	-5,41%	here
1.A.3.b iii	3,04	2,96	-0,08	-2,56%	here
1.A.3.b iv	14,75	15,20	0,45	3,07%	here
1.A.3.b v	19,73	20,26	0,53	2,67%	here
1.A.3.c	0,42	0,36	-0,06	-15,42%	here
1.A.3.d ii	1,08	1,19	0,11	10,50%	here
1.A.3.e i	0,01	0,01	0,00	0,45%	1.A.3.e i - Pipeline Transport]
1.A.4.a i	3,82	3,42	-0,40	-10,52%	here
1.A.4.a ii	1,14	0,90	-0,24	-21,08%	here
1.A.4.b i	32,07	34,96	2,89	9,01%	here
1.A.4.b ii	10,76	10,97	0,21	1,92%	here
1.A.4.c i	0,79	0,78	-0,01	-1,47%	here
1.A.4.c ii	9,39	9,45	0,07	0,69%	here
1.A.4.c iii	0,130	0,134	0,004	2,70%	here
1.A.5.a	0,06	0,06	0,00	1,28%	here
1.A.5.b	1,11	1,11	0,00	0,01%	here
1.B.1.a	0,002	0,006	0,004	260%	here
1.B.2.a iv	12,27	12,27	0,00	-0,01%	
1.B.2.a v	16,71	16,60	-0,11	-0,66%	
1.B.2.b	4,91	4,89	-0,02	-0,36%	
NFR 2 - IPPU	586,01	584,84	-1,17	-0,20%	sub-category chapters
2.A.3	1,01	1,01	0,00	0,01%	here
2.G	2,25	1,12	-1,13	-50,27%	here
2.H.1	3,66	3,66	0,00	0,00%	here
2.H.2	15,78	15,74	-0,04	-0,22%	here
NFR 3 - Agriculture	324,31	305,68	-18,63	-5,74%	sub-category chapters
3.B.1.a	169,97	160,81	-9,16	-5,39%	here
3.B.1.b	101,42	91,95	-9,47	-9,34%	here
NFR 5 - Waste	19,91	19,91	0,00	0,00%	sub-category chapters
5.A	3,99	3,98	-0,01	0,30%	here
5.D.2	NA	0,01	0,01		here
NFR 6 - Other		NA			