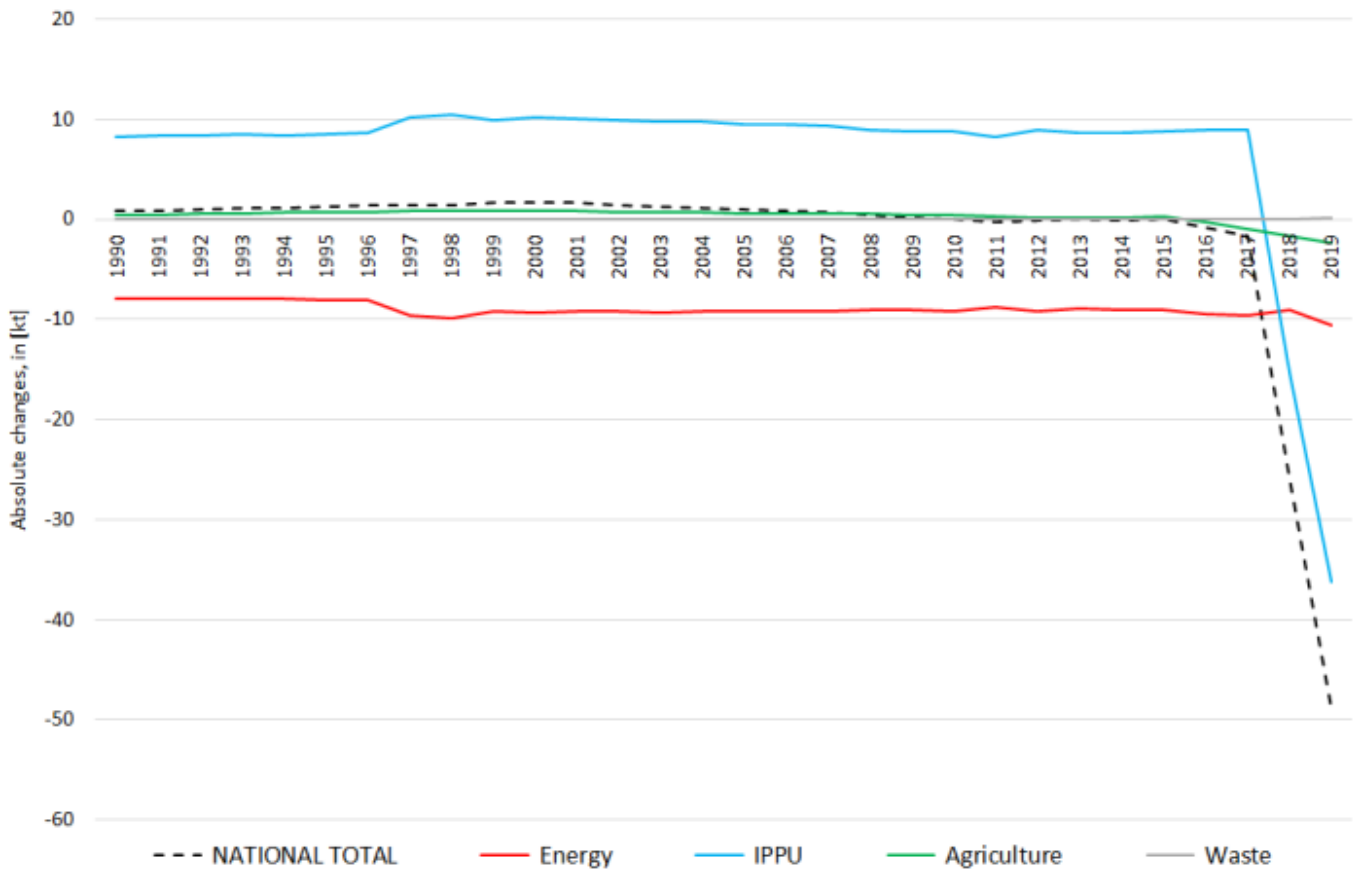
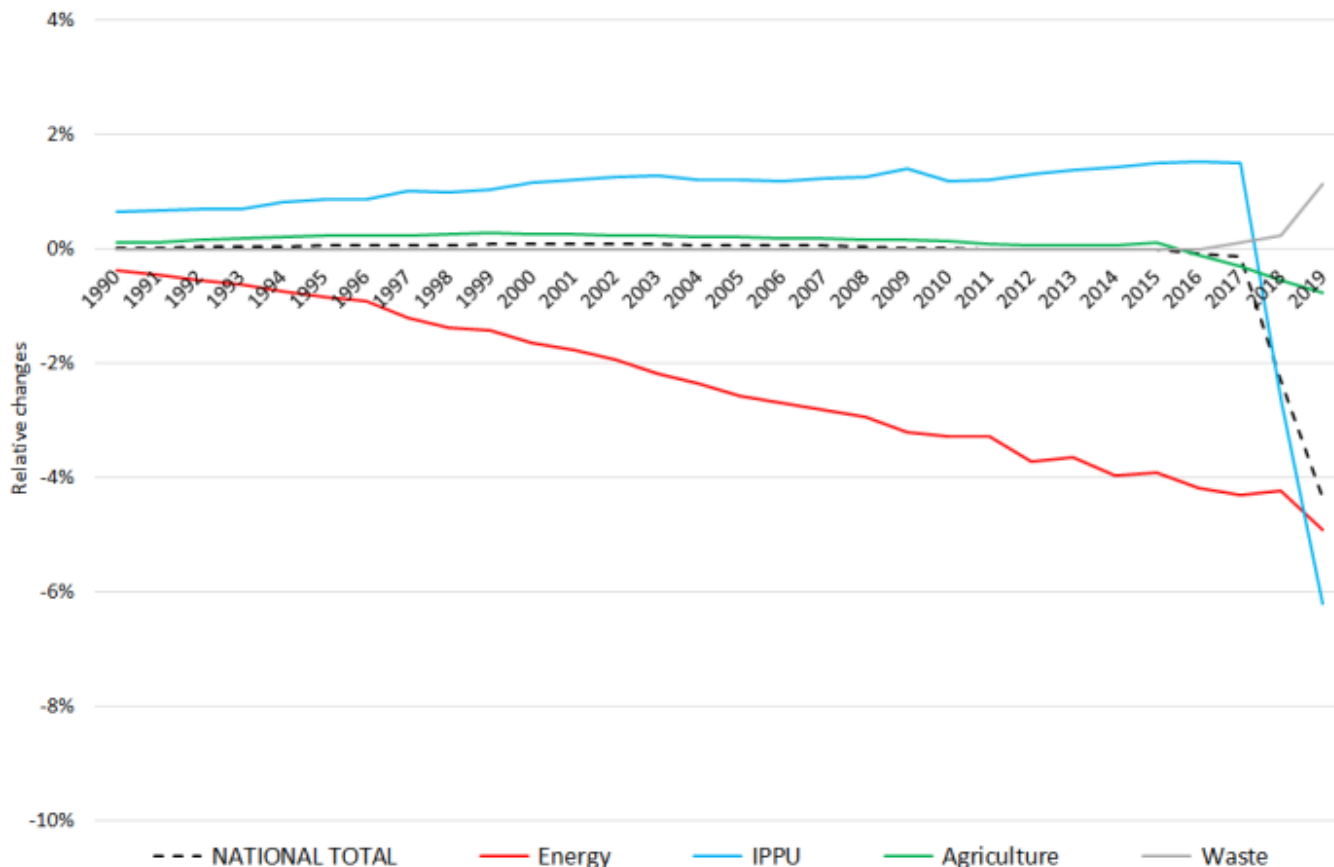


# Recalculations - Non-Methane Volatile Organic Compounds

Revision of NMVOC emissions over time

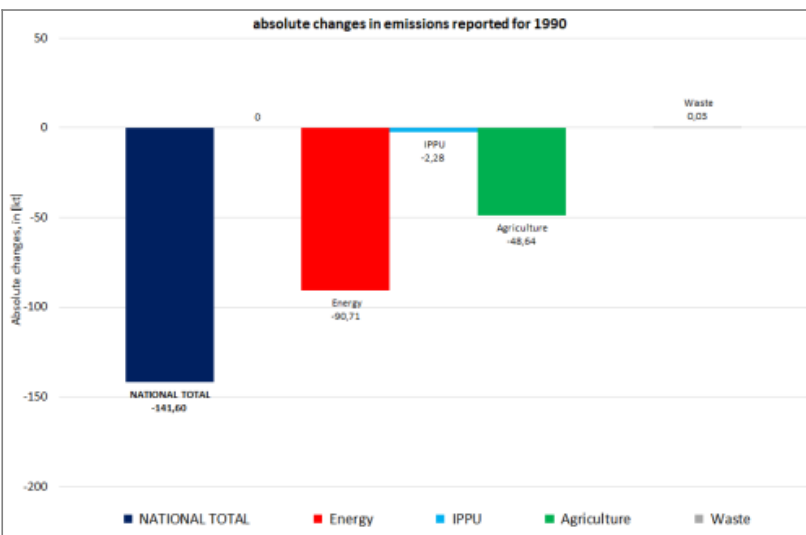




The significant changes within the **National Total reported for 1990 (-142 kt | -3.53 %)** are dominated by revisions in **NFR sub-category 1.A.3.b i (-71.6 kt | -6 %)** and **NFR 3 (-48.6 kt |-11 %)**.

Table 1: Changes in emission estimates for 1990

NFR Code	Submission		Difference	relative	Reasoning
	2020	2021			
<b>NATIONAL TOTAL</b>	<b>4.033,30</b>	<b>3.890,85</b>	<b>-142,45</b>	<b>-3,53%</b>	see description and reasoning in: sub-category chapters
<b>NFR 1 - Energy</b>	<b>2.262,13</b>	<b>2.170,57</b>	<b>-91,55</b>	<b>-4,05%</b>	sub-category chapters
1.A.2.g vii	9,83	9,95	0,12	1,24%	<a href="#">here</a>
1.A.2.g viii	5,95	5,95	0,00	0,00%	<a href="#">here</a>
1.A.3.a i(i)	0,77	0,80	0,03	3,79%	<a href="#">here</a>
1.A.3.a ii(i)	1,75	0,50	-1,25	-71,55%	<a href="#">here</a>
1.A.3.b i	1.190,67	1.119,06	-71,61	-6,01%	<a href="#">here</a>
1.A.3.b ii	44,51	39,73	-4,78	-10,73%	<a href="#">here</a>
1.A.3.b iii	57,71	60,10	2,39	4,14%	<a href="#">here</a>



absolute changes in emissions reported for 1990					Submission 2020	Submission 2021	Difference	Reasoning
NFR Code	[kt]			relative	see description and reasoning in:			
<b>NATIONAL TOTAL</b>	<b>4.033,30</b>	<b>3.890,85</b>	<b>-142,45</b>	<b>-3,53%</b>	<b>sub-category chapters</b>			
<b>NFR 1 - Energy</b>	<b>2.262,13</b>	<b>2.170,57</b>	<b>-91,55</b>	<b>-4,05%</b>	<b>sub-category chapters</b>			
1.A.3.b iv	62,35	58,50	-3,86	-6,18%	<a href="#">here</a>			
1.A.3.b v	214,70	201,42	-13,28	-6,18%	<a href="#">here</a>			
1.A.4.a ii	2,34	2,35	0,01	0,47%	<a href="#">here</a>			
1.A.4.b ii	12,22	12,48	0,26	2,09%	<a href="#">here</a>			
1.A.4.c ii	31,72	32,17	0,45	1,42%	<a href="#">here</a>			
1.B.2.a v	87,77	87,73	-0,03	-0,04%				
<b>NFR 2 - IPPU</b>	<b>1.285,62</b>	<b>1.283,34</b>	<b>-2,28</b>	<b>-0,18%</b>	<b>sub-category chapters</b>			
2.G	3,90	1,62	-2,28	-58,42%	<a href="#">here</a>			
<b>NFR 3 - Agriculture</b>	<b>447,13</b>	<b>398,49</b>	<b>-48,64</b>	<b>-10,88%</b>	<b>sub-category chapters</b>			
3.B.1.a	231,88	196,61	-35,27	-15%	<a href="#">here</a>			
3.B.1.b	167,09	153,72	-13,37	-8,00%	<a href="#">here</a>			
<b>NFR 5 - Waste</b>	<b>38,42</b>	<b>38,45</b>	<b>0,03</b>	<b>0,07%</b>	<b>sub-category chapters</b>			
5.D.2	NA	0,03	0,03		<a href="#">here</a>			
<b>NFR 6 - Other</b>	<b>NA</b>							

Changes within the **National Total reported for 2018 (-15.31 kt | -1.34 %)** are dominated by decreased emission estimates **NFR 3**.

In **NFR 5**, emissions have been re-allocated with no impact on the sector's total emissions. The strongest relative change occurs for **NFR 2.G with minus 50 %**.

Table 2: Changes in emission estimates for 2018

absolute changes in emissions reported for 2018					Submission 2020	Submission 2021	Difference	Reasoning
NFR Code	[kt]				relative	see description and reasoning in:		
<b>NATIONAL TOTAL</b>	<b>1.140,32</b>	<b>1.125,02</b>	<b>-15,31</b>	<b>-1,34%</b>	<b>sub-category chapters</b>			
<b>NFR 1 - Energy</b>	<b>210,09</b>	<b>214,58</b>	<b>4,49</b>	<b>2,14%</b>	<b>sub-category chapters</b>			
1.A.1.a	7,95	8,06	0,11	1,37%	<a href="#">here</a>			
1.A.1.b	0,75	0,90	0,15	19,64%	<a href="#">here</a>			
1.A.1.c	0,32	0,39	0,07	22,37%	<a href="#">here</a>			
1.A.2.a	0,255	0,259	0,004	1,50%	<a href="#">here</a>			
1.A.2.b	0,08	0,08	0,00	2,51%	<a href="#">here</a>			
1.A.2.e	0,02	0,02	0,002	8,50%	<a href="#">here</a>			
1.A.2.g vii	3,63	3,62	-0,01	-0,26%	<a href="#">here</a>			
1.A.2.g viii	6,04	5,65	-0,38	-6,37%	<a href="#">here</a>			
1.A.3.a i(i)	0,79	0,72	-0,06	-8,24%	<a href="#">here</a>			
1.A.3.a ii(i)	0,56	0,49	-0,07	-12,86%	<a href="#">here</a>			
1.A.3.b i	46,43	47,87	1,43	3,09%	<a href="#">here</a>			
1.A.3.b ii	1,57	1,49	-0,09	-5,41%	<a href="#">here</a>			
1.A.3.b iii	3,04	2,96	-0,08	-2,56%	<a href="#">here</a>			
1.A.3.b iv	14,75	15,20	0,45	3,07%	<a href="#">here</a>			
1.A.3.b v	19,73	20,26	0,53	2,67%	<a href="#">here</a>			
1.A.3.c	0,42	0,36	-0,06	-15,42%	<a href="#">here</a>			
1.A.3.d ii	1,08	1,19	0,11	10,50%	<a href="#">here</a>			
1.A.3.e i	0,01	0,01	0,00	0,45%	1.A.3.e i - Pipeline Transport ] <a href="#">here</a>			
1.A.4.a i	3,82	3,42	-0,40	-10,52%	<a href="#">here</a>			
1.A.4.a ii	1,14	0,90	-0,24	-21,08%	<a href="#">here</a>			
1.A.4.b i	32,07	34,96	2,89	9,01%	<a href="#">here</a>			
1.A.4.b ii	10,76	10,97	0,21	1,92%	<a href="#">here</a>			
1.A.4.c i	0,79	0,78	-0,01	-1,47%	<a href="#">here</a>			
1.A.4.c ii	9,39	9,45	0,07	0,69%	<a href="#">here</a>			
1.A.4.c iii	0,130	0,134	0,004	2,70%	<a href="#">here</a>			
1.A.5.a	0,06	0,06	0,00	1,28%	<a href="#">here</a>			
1.A.5.b	1,11	1,11	0,00	0,01%	<a href="#">here</a>			
1.B.1.a	0,002	0,006	0,004	260%	<a href="#">here</a>			
1.B.2.a iv	12,27	12,27	0,00	-0,01%				
1.B.2.a v	16,71	16,60	-0,11	-0,66%				
1.B.2.b	4,91	4,89	-0,02	-0,36%				
<b>NFR 2 - IPPU</b>	<b>586,01</b>	<b>584,84</b>	<b>-1,17</b>	<b>-0,20%</b>	<b>sub-category chapters</b>			
2.G	2,25	1,12	-1,13	-50,27%	<a href="#">here</a>			
2.H.1	3,66	3,66	0,00	0,00%	<a href="#">here</a>			
2.H.2	15,78	15,74	-0,04	-0,22%	<a href="#">here</a>			
<b>NFR 3 - Agriculture</b>	<b>324,31</b>	<b>305,68</b>	<b>-18,63</b>	<b>-5,74%</b>	<b>sub-category chapters</b>			
3.B.1.a	169,97	160,81	-9,16	-5,39%	<a href="#">here</a>			
3.B.1.b	101,42	91,95	-9,47	-9,34%	<a href="#">here</a>			

absolute changes in emissions reported for 2018					Submission 2020	Submission 2021	Difference	Reasoning
<p>Detailed description of the bar chart: The chart displays five bars representing different emission categories. The 'NATIONAL TOTAL' bar is dark blue and extends downwards to -18,00. The 'Energy' bar is red and extends upwards to 2,43. The 'IPPU' bar is light blue and extends downwards to -1,13. The 'Agriculture' bar is green and extends downwards to -19,26. The 'Waste' bar is grey and extends downwards to -0,05. A legend at the bottom identifies the colors for each category.</p>								
NFR Code	[kt]				relative	see description and reasoning in:		
<b>NATIONAL TOTAL</b>	<b>1.140,32</b>	<b>1.125,02</b>	<b>-15,31</b>	<b>-1,34%</b>	sub-category chapters			
<b>NFR 1 - Energy</b>	<b>210,09</b>	<b>214,58</b>	<b>4,49</b>	<b>2,14%</b>	sub-category chapters			
<b>NFR 5 - Waste</b>	<b>19,91</b>	<b>19,91</b>	<b>0,00</b>	<b>0,00%</b>	sub-category chapters			
5.A	3,99	3,98	-0,01	0,30%	<a href="#">here</a>			
5.D.2	NA	0,01	0,01		<a href="#">here</a>			
<b>NFR 6 - Other</b>	<b>NA</b>							