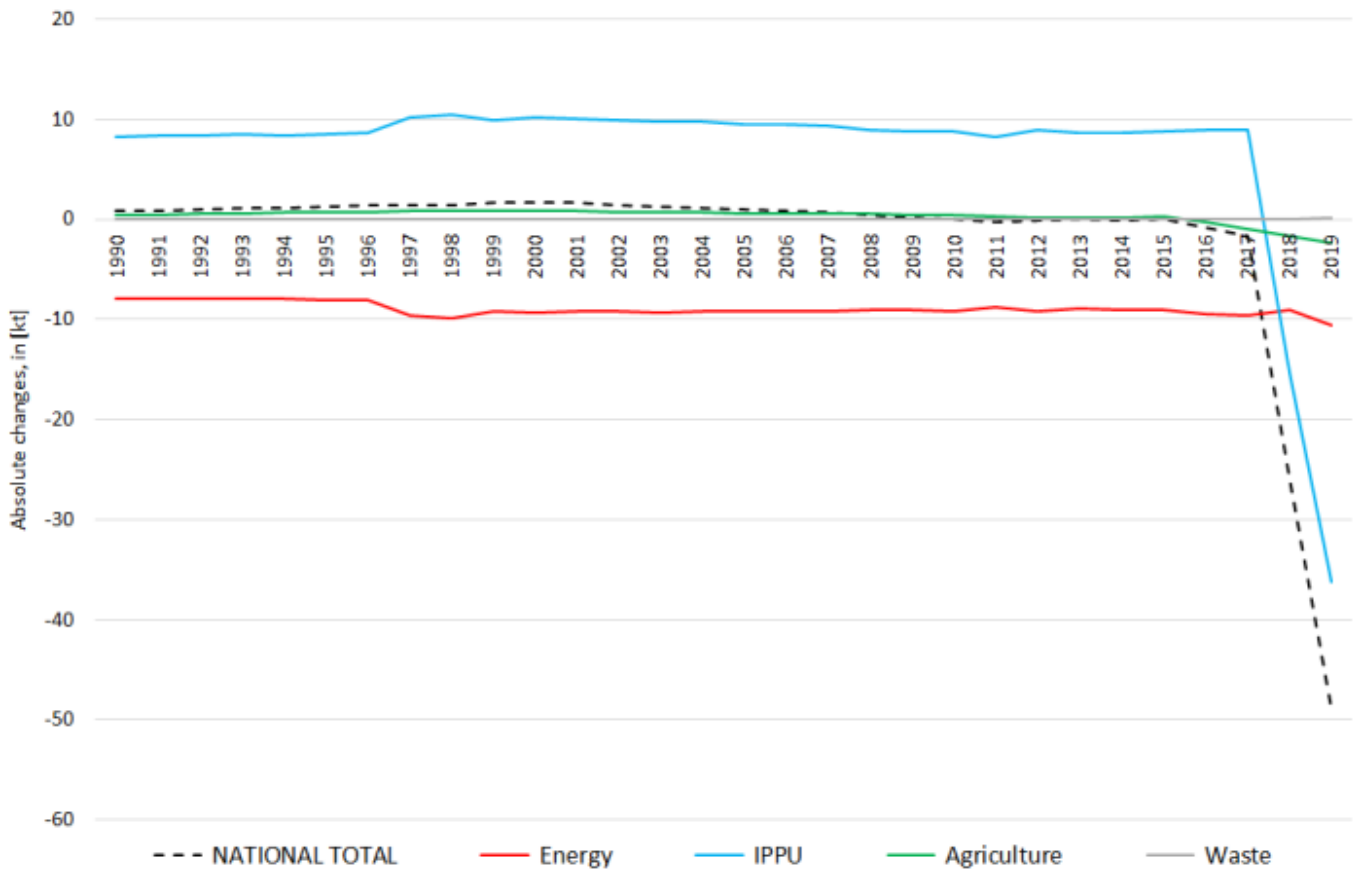
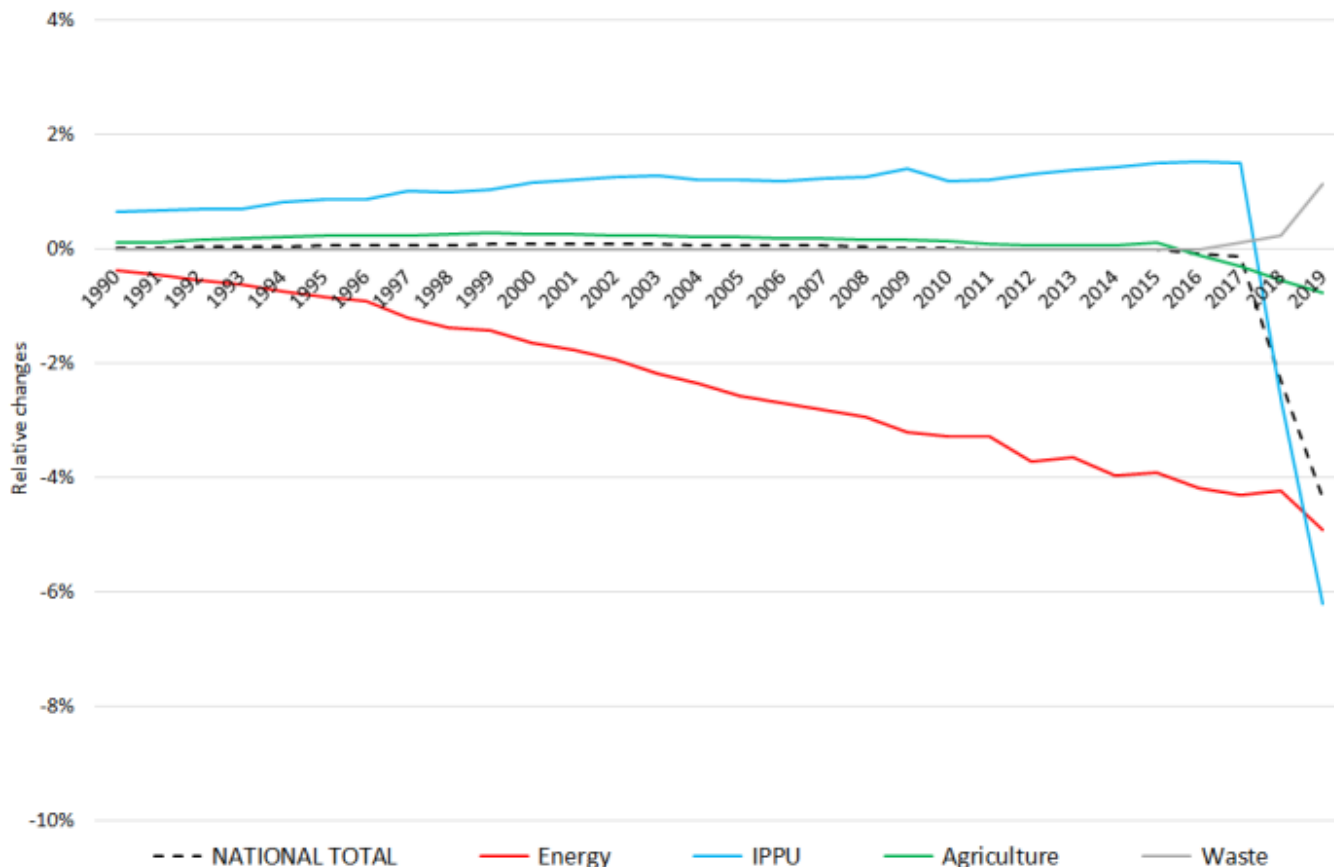


Recalculations - Non-Methane Volatile Organic Compounds

Revision of NMVOC emissions over time





The insignificant changes within the **National Total reported for 1990 (+0.73 kt | +0.02 %)** are dominated by a re-allocation of **8.09 kt** of NMVOCs from NFR sub-categorie **1.B.2.a iv** to **2.B.10.b**, with the strongest percental change occurring for **1.A.4.c iii** with minus 55 %.

Table 1: Changes in emission estimates for 1990

absolute changes in emissions reported for 1990					Submission 2021	Submission 2022	Difference	Reasoning
NFR Code	[kt]			relative	see description and reasoning in:			
NATIONAL TOTAL	3.890,85	3.891,58	0,73	0,02%	sub-category chapters			
NFR 1 - Energy	2.170,57	2.162,57	-8,00	-0,37%	sub-category chapters			
1.A.3.a i(i)	0,80	0,80	0,00	-0,49%	here			
1.A.3.a ii(i)	0,50	0,42	-0,08	-15,49%	here			
1.A.3.b i	1.119,06	1.119,06	0,00	0,00%	here			
1.A.3.b ii	39,73	39,73	0,00	0,00%	here			
1.A.3.b iii	60,10	60,12	0,02	0,03%	here			

absolute changes in emissions reported for 1990					Submission 2021	Submission 2022	Difference	Reasoning
NFR Code	[kt]			relative	see description and reasoning in:			
NATIONAL TOTAL	3.890,85	3.891,58	0,73	0,02%	sub-category chapters			
NFR 1 - Energy	2.170,57	2.162,57	-8,00	-0,37%	sub-category chapters			
1.A.3.c	4,19	4,22	0,03	0,718%	here			
1.A.3.d ii	3,20	3,27	0,07	2,106%	here			
1.A.4.b ii	12,48	12,52	0,04	0,32%	here			
1.A.4.c iii	0,04	0,02	-0,02	-54,62%	here			
1.A.5.b	21,32	21,30	-0,02	-0,10%	here			
1.B.2.a iv	81,24	73,15	-8,09	-9,96%				
1.B.2.a v	87,73	87,79	0,05	0,06%				
NFR 2 - IPPU	1.283,34	1.291,63	8,30	0,65%	sub-category chapters			
2.B.10.b	NA	8,09	8,09		here			
2.D.3.g	70,00	69,59	-0,41	-0,58%	here			
2.D.3.i	241,57	242,18	0,61	0,25%				
NFR 3 - Agriculture	398,49	398,93	0,44	0,11%	sub-category chapters			
3.B.1.b	153,72	154,16	0,44	0,29%	here			
NFR 5 - Waste	38,45	38,45	0,00	0,00%				
NFR 6 - Other	NA							

Changes within the **National Total reported for 2018 (-15.31 kt | -1.34 %)** are dominated by decreased emission estimates **NFR 3**.

In **NFR 5**, emissions have been re-allocated with no impact on the sector's total emissions. The strongest relative change occurs for **NFR 2.G with minus 50 %**.

Table 2: Changes in emission estimates for 2018

NFR Code	[kt]				relative	see description and reasoning in: sub-category chapters
	Submission 2020	Submission 2021	Difference	Reasoning		
NATIONAL TOTAL	1.140,32	1.125,02	-15,31	-1,34%	sub-category chapters	
NFR 1 - Energy	210,09	214,58	4,49	2,14%	sub-category chapters	
1.A.1.a	7,95	8,06	0,11	1,37%	here	
1.A.1.b	0,75	0,90	0,15	19,64%	here	
1.A.1.c	0,32	0,39	0,07	22,37%	here	
1.A.2.a	0,255	0,259	0,004	1,50%	here	
1.A.2.b	0,08	0,08	0,00	2,51%	here	
1.A.2.e	0,02	0,02	0,002	8,50%	here	
1.A.2.g vii	3,63	3,62	-0,01	-0,26%	here	
1.A.2.g viii	6,04	5,65	-0,38	-6,37%	here	
1.A.3.a i(i)	0,79	0,72	-0,06	-8,24%	here	
1.A.3.a ii(i)	0,56	0,49	-0,07	-12,86%	here	
1.A.3.b i	46,43	47,87	1,43	3,09%	here	
1.A.3.b ii	1,57	1,49	-0,09	-5,41%	here	
1.A.3.b iii	3,04	2,96	-0,08	-2,56%	here	
1.A.3.b iv	14,75	15,20	0,45	3,07%	here	
1.A.3.b v	19,73	20,26	0,53	2,67%	here	
1.A.3.c	0,42	0,36	-0,06	-15,42%	here	
1.A.3.d ii	1,08	1,19	0,11	10,50%	here	
1.A.3.e i	0,01	0,01	0,00	0,45%	here	
1.A.4.a i	3,82	3,42	-0,40	-10,52%	here	
1.A.4.a ii	1,14	0,90	-0,24	-21,08%	here	
1.A.4.b i	32,07	34,96	2,89	9,01%	here	
1.A.4.b ii	10,76	10,97	0,21	1,92%	here	
1.A.4.c i	0,79	0,78	-0,01	-1,47%	here	
1.A.4.c ii	9,39	9,45	0,07	0,69%	here	
1.A.4.c iii	0,130	0,134	0,004	2,70%	here	
1.A.5.a	0,06	0,06	0,00	1,28%	here	
1.A.5.b	1,11	1,11	0,00	0,01%	here	
1.B.1.a	0,002	0,006	0,004	260%	here	
1.B.2.a iv	12,27	12,27	0,00	-0,01%		
1.B.2.a v	16,71	16,60	-0,11	-0,66%		
1.B.2.b	4,91	4,89	-0,02	-0,36%		
NFR 2 - IPPU	586,01	584,84	-1,17	-0,20%	sub-category chapters	
2.G	2,25	1,12	-1,13	-50,27%	here	
2.H.1	3,66	3,66	0,00	0,00%	here	
2.H.2	15,78	15,74	-0,04	-0,22%	here	
NFR 3 - Agriculture	324,31	305,68	-18,63	-5,74%	sub-category chapters	
3.B.1.a	169,97	160,81	-9,16	-5,39%	here	
3.B.1.b	101,42	91,95	-9,47	-9,34%	here	
NFR 5 - Waste	19,91	19,91	0,00	0,00%	sub-category chapters	
5.A	3,99	3,98	-0,01	0,30%	here	

absolute changes in emissions reported for 2018					Submission 2020	Submission 2021	Difference	Reasoning
<p>The chart displays the absolute changes in emissions for 2018 across five categories. The y-axis represents the change in kilotons (kt), ranging from -30 to 20. The x-axis lists the categories: NATIONAL TOTAL, Energy, IPPU, Agriculture, and Waste. The bars are colored as follows: NATIONAL TOTAL (dark blue), Energy (red), IPPU (light blue), Agriculture (green), and Waste (grey). The values are: NATIONAL TOTAL: -18,00; Energy: 2,43; IPPU: -1,13; Agriculture: -19,26; Waste: -0,05.</p>								
NFR Code					[kt]		relative	see description and reasoning in:
NATIONAL TOTAL					1.140,32	1.125,02	-15,31	-1,34%
NFR 1 - Energy					210,09	214,58	4,49	2,14%
5.D.2					NA	0,01	0,01	here
NFR 6 - Other					NA			