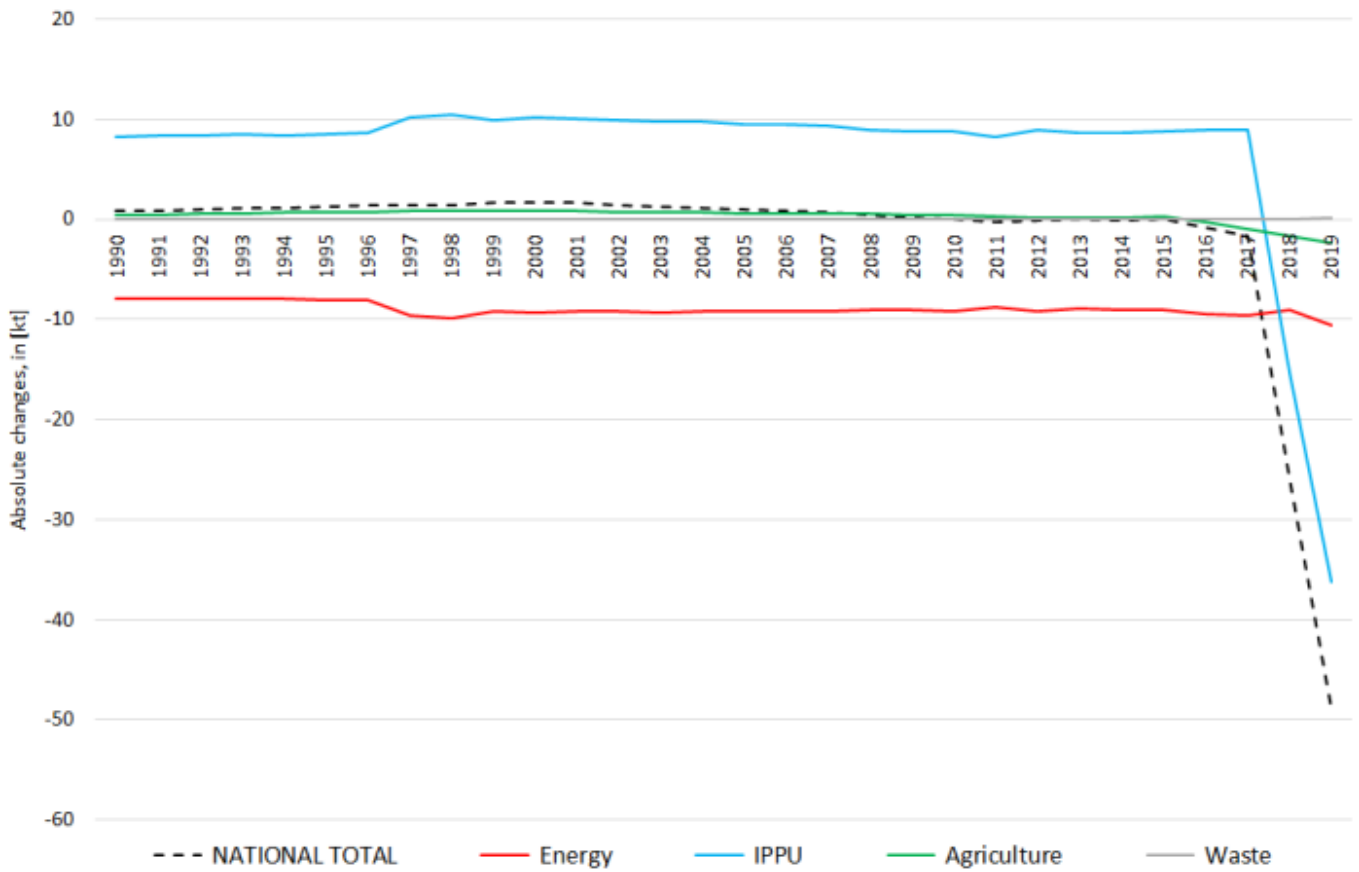
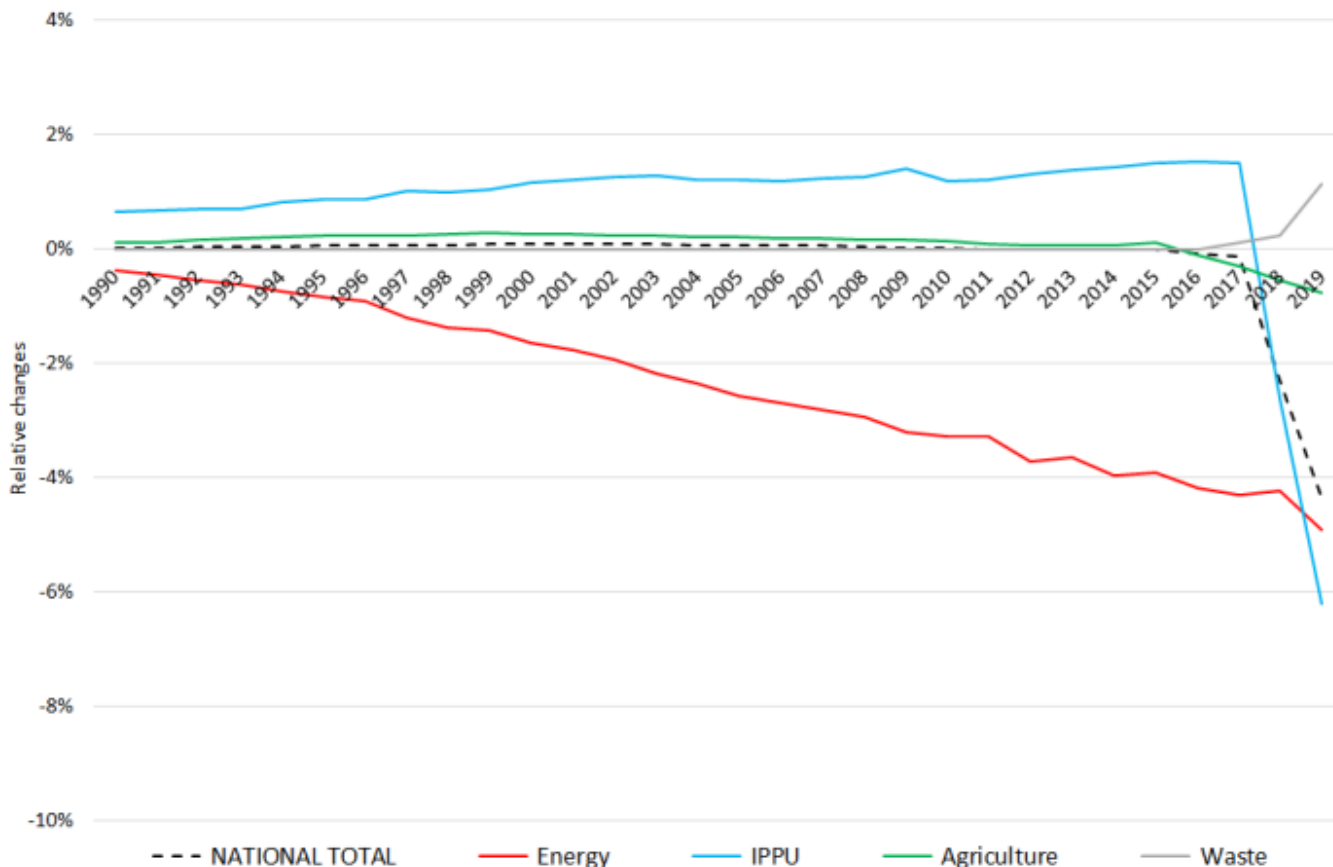


# Recalculations - Non-Methane Volatile Organic Compounds

Revision of NMVOC emissions over time





The insignificant changes within the **National Total reported for 1990 (+0.73 kt | +0.02 %)** are dominated by a re-allocation of **8.09 kt** of NMVOCs from NFR sub-categorie **1.B.2.a iv** to **2.B.10.b**, with the strongest percental change occurring for **1.A.4.c iii** with minus 55 %.

Table 1: Changes in emission estimates for 1990

NFR Sector	Submission 2021	Submission 2022	Difference		Reasoning
	[kt]		absolute	relative	
<b>NATIONAL TOTAL</b>	<b>3.890,85</b>	<b>3.891,58</b>	<b>0,73</b>	<b>0,02%</b>	see description and reasoning in: sub-category chapters
<b>NFR 1 - Energy</b>	<b>2.170,57</b>	<b>2.162,57</b>	<b>-8,00</b>	<b>-0,37%</b>	sub-category chapters
1.A.3.a i(i)	0,80	0,80	0,00	-0,49%	<a href="#">here</a>
1.A.3.a ii(i)	0,50	0,42	-0,08	-15,49%	<a href="#">here</a>
1.A.3.b i	1.119,06	1.119,06	0,00	0,00%	<a href="#">here</a>
1.A.3.b ii	39,73	39,73	0,00	0,00%	<a href="#">here</a>
1.A.3.b iii	60,10	60,12	0,02	0,03%	<a href="#">here</a>
1.A.3.c	4,19	4,22	0,03	0,718%	<a href="#">here</a>
1.A.3.d ii	3,20	3,27	0,07	2,106%	<a href="#">here</a>
1.A.4.b ii	12,48	12,52	0,04	0,32%	<a href="#">here</a>
1.A.4.c iii	0,04	0,02	-0,02	-54,62%	<a href="#">here</a>
1.A.5.b	21,32	21,30	-0,02	-0,10%	<a href="#">here</a>
1.B.2.a iv	81,24	73,15	-8,09	-9,96%	
1.B.2.a v	87,73	87,79	0,05	0,06%	
<b>NFR 2 - IPPU</b>	<b>1.283,34</b>	<b>1.291,63</b>	<b>8,30</b>	<b>0,65%</b>	sub-category chapters
2.B.10.b	NA	8,09	8,09		<a href="#">here</a>
2.D.3.g	70,00	69,59	-0,41	-0,58%	<a href="#">here</a>
2.D.3.i	241,57	242,18	0,61	0,25%	
<b>NFR 3 - Agriculture</b>	<b>398,49</b>	<b>398,93</b>	<b>0,44</b>	<b>0,11%</b>	sub-category chapters
3.B.1.b	153,72	154,16	0,44	0,29%	<a href="#">here</a>
<b>NFR 5 - Waste</b>	<b>38,45</b>	<b>38,45</b>	<b>0,00</b>	<b>0,00%</b>	
<b>NFR 6 - Other</b>	NA				

Changes within the **National Total reported for 2019 (-49kt | -4.37%)** result from several more or less significant

revisions in **NFR1, 2 3 and 4.**

The strongest percental change occurs for **NFR 1.A.4.c iii with minus 43 %.**

Table 2: Changes in emission estimates for 2019

NFR Sector	Submission 2022	Submission 2023	Difference		Reasoning see description and reasoning in: sub-category chapters
	[kt]			relative	
<b>NATIONAL TOTAL</b>	<b>1.035.77</b>	<b>1.028.45</b>	<b>-7.33</b>	<b>-0.71%</b>	<b>sub-category chapters</b>
<b>NFR 1 - Energy</b>	<b>193.94</b>	<b>191.64</b>	<b>-2.30</b>	<b>-1.19%</b>	<b>sub-category chapters</b>
1.A.1.a	6.56	6.52	-0.04	-0.57%	<a href="#">here</a>
1.A.1.b	0.80	0.82	0.02	2.09%	<a href="#">here</a>
1.A.1.c	0.38	0.41	0.03	8.67%	<a href="#">here</a>
1.A.2.a	0.229	0.225	-0.004	-1.55%	<a href="#">here</a>
1.A.2.b	0.07460	0.07464	0.00004	0.05%	<a href="#">here</a>
1.A.2.c	IE	IE	#WERT!	#WERT!	<a href="#">here</a>
1.A.2.d	IE	IE	#WERT!	#WERT!	<a href="#">here</a>
1.A.2.e	0.023	0.021	-0.002	-7.37%	<a href="#">here</a>
1.A.2.f	IE	IE	#WERT!	#WERT!	<a href="#">here</a>
1.A.2.g vii	3.42	4.03	0.62	18.00%	<a href="#">here</a>
1.A.2.g viii	5.40	5.80	0.40	7.43%	<a href="#">here</a>
1.A.3.a i(i)	0.28	0.26	-0.02	-6.62%	<a href="#">here</a>
1.A.3.a ii(i)	0.24	0.23	-0.02	-6.27%	<a href="#">here</a>
1.A.3.b i	40.79	40.03	-0.76	-1.87%	<a href="#">here</a>
1.A.3.b ii	1.39	1.38	-0.01	-0.66%	<a href="#">here</a>
1.A.3.b iii	2.39	2.31	-0.08	-3.38%	<a href="#">here</a>
1.A.3.b iv	14.83	15.18	0.35	2.37%	<a href="#">here</a>
1.A.3.b v	22.79	22.71	-0.08	-0.37%	<a href="#">here</a>
1.A.3.b vi	NA	NA	#WERT!	#WERT!	<a href="#">here</a>
1.A.3.b vii	NA	NA	#WERT!	#WERT!	<a href="#">here</a>
1.A.3.c	0.40	0.45	0.05	12.55%	<a href="#">here</a>
1.A.3.d i(ii)	IE	IE	#WERT!	#WERT!	
1.A.3.d ii	0.956	0.973	0.017	1.73%	<a href="#">here</a>
1.A.4.a i	3.68	3.86	0.18	4.81%	<a href="#">here</a>
1.A.4.a ii	0.839	0.841	0.002	0.25%	<a href="#">here</a>
1.A.4.b i	33.34	32.86	-0.48	-1.43%	<a href="#">here</a>
1.A.4.b ii	9.612	7.700	-1.91	-19.89%	<a href="#">here</a>
1.A.4.c i	0.816	0.814	-0.002	-0.23%	<a href="#">here</a>
1.A.4.c ii	10.44	12.14	1.70	16.32%	<a href="#">here</a>
1.A.5.a	0.071	0.075	0.004	4.99%	<a href="#">here</a>
1.A.5.b	1.021	1.020	-0.002	-0.17%	<a href="#">here</a>
1.B.1.b	2.78	2.79	0.01	0.24%	<a href="#">here</a>
1.B.1.c	NA	NA	#WERT!	#WERT!	<a href="#">here</a>
1.B.2.a i	5.619	5.619	0.000	0.00%	
1.B.2.a iv	3.90	3.90	0.00	0.00%	
1.B.2.a v	15.76	15.76	0.00	0.00%	
1.B.2.b	4.78	2.51	-2.27	-47.55%	
<b>NFR 2 - IPPU</b>	<b>532.81</b>	<b>532.82</b>	<b>0.02</b>	<b>0,003%</b>	<b>sub-category chapters</b>
2.A.3	0.58	0.60	0.02	2.94%	<a href="#">here</a>
<b>NFR 3 - Agriculture</b>	<b>298.95 296.07 -2.87 -0.96%</b>				<b>sub-category chapters</b>
3.B.1.a	159.99	158.92	-1.08	-0.67%	<a href="#">here</a>
3.B.1.b	85.42	83.62	-1.80	-2.10%	<a href="#">here</a>
<b>NFR 5 - Waste</b>	<b>10.08</b>	<b>7.91</b>	<b>-2.17</b>	<b>-21.57%</b>	<b>sub-category chapters</b>
5.A	3.567 1.399 -2.168 -60.79%				<a href="#">here</a>
5.D.1	0.14 0.13 -0.01 -4.16%				<a href="#">here</a>

	<b>Submission 2022</b>	<b>Submission 2023</b>	<b>Difference</b>		<b>Reasoning</b>
<b>NFR Sector</b>	<b>[kt]</b>			<b>relative</b>	<b>see description and reasoning in:</b>
<b>NATIONAL TOTAL</b>	<b>1.035.77</b>	<b>1.028.45</b>	<b>-7.33</b>	<b>-0.71%</b>	<b>sub-category chapters</b>
<b>NFR 1 - Energy</b>	<b>193.94</b>	<b>191.64</b>	<b>-2.30</b>	<b>-1.19%</b>	<b>sub-category chapters</b>
5.D.2	0,0130 0,0127 -0,0003 -2.52%				<a href="#">here</a>
NFR 6 - Other	0.00	0.00	0.00		