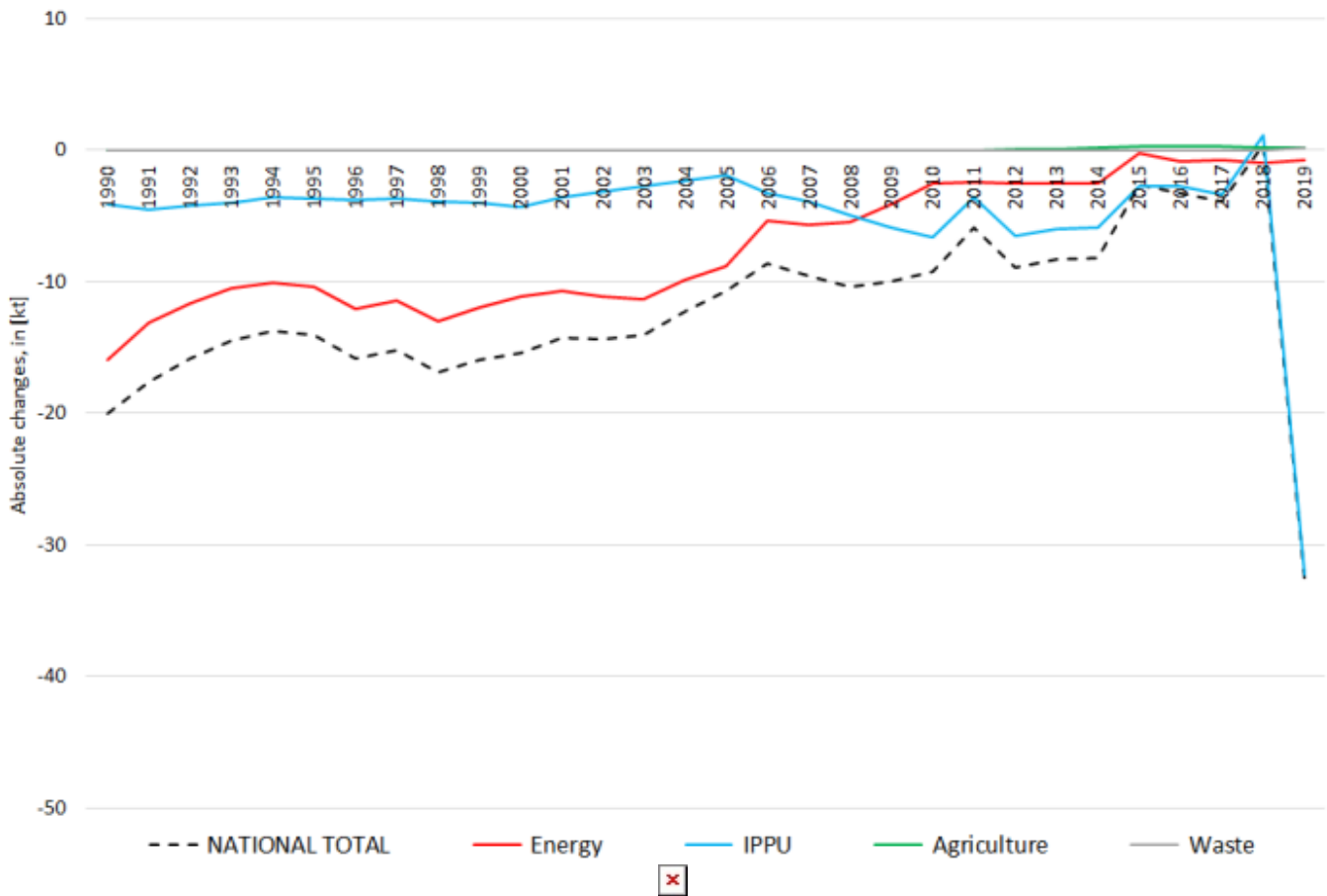


# Recalculations - Total Suspended Particles (TSP)

## Revision of TSP emissions over time:



The small changes within the **National Total reported for 1990 (-8.08 kt | -0.39 %)** are dominated by a revision of emission estimates for NFRs **1.A.3.c (+1.40 kt)**, **1.A.3.d ii (-6.18 kt)**, **2.A.5.a (+2.27 kt)** and **2.B.10.a (-0.96 kt)** together with less significant revisions in NFRs 1, 2 and 3.

The strongest percental changes occur for NFRs **2.A.3 with plus 52 %** and **1.A.3.d ii with minus 46 %**.

Table 1: Changes in emission estimates for 1990

	Submission 2021	Submission 2022	Difference		Reasoning
NFR Sector	[kt]		absolute	relative	see description and reasoning in:
<b>NATIONAL TOTAL</b>	<b>2.050,52</b>	<b>2.042,44</b>	<b>-8,08</b>	<b>-0,39%</b>	<b>sub-category chapters</b>
<b>NFR 1 - Energy</b>	<b>1.406,91</b>	<b>1.401,92</b>	<b>-4,99</b>	<b>-0,35%</b>	<b>sub-category chapters</b>
1.A.3.a i(i)	0,05	0,05	0,00	-1,26%	<a href="#">here</a>
1.A.3.a ii(i)	0,05	0,04	-0,01	-13,92%	<a href="#">here</a>
1.A.3.b iii	29,56	29,56	0,00	0,01%	<a href="#">here</a>
1.A.3.c	11,67	13,07	1,40	12,02%	<a href="#">here</a>
1.A.3.d ii	13,35	7,17	-6,18	-46,30%	<a href="#">here</a>
1.A.4.b ii	0,22	0,29	0,07	30,37%	<a href="#">here</a>
1.A.4.c iii	0,22	0,11	-0,11	-50,78%	<a href="#">here</a>
1.A.5.a	21,82	21,82	0,00	0,00%	<a href="#">here</a>
1.A.5.b	2,98	2,82	-0,17	-5,57%	<a href="#">here</a>
<b>NFR 2 - IPPU</b>	<b>565,43</b>	<b>562,34</b>	<b>-3,09</b>	<b>-0,55%</b>	<b>sub-category chapters</b>
2.A.3	0,08	0,13	0,04	51,47%	<a href="#">here</a>
2.A.5.a	84,78	82,51	-2,27	-2,68%	<a href="#">here</a>
2.B.6	NA	0,09	0,09		<a href="#">here</a>

	Submission 2021	Submission 2022	Difference		Reasoning
<b>NFR Sector</b>	<b>[kt]</b>			<b>relative</b>	<b>see description and reasoning in:</b>
<b>NATIONAL TOTAL</b>	<b>2.050,52</b>	<b>2.042,44</b>	<b>-8,08</b>	<b>-0,39%</b>	<b>sub-category chapters</b>
<b>NFR 1 - Energy</b>	<b>1.406,91</b>	<b>1.401,92</b>	<b>-4,99</b>	<b>-0,35%</b>	<b>sub-category chapters</b>
2.B.10.a	16,62	15,66	-0,96	-5,77%	<a href="#">here</a>
<b>NFR 3 - Agriculture</b>	<b>67,48</b>	<b>67,48</b>	<b>0,00</b>	<b>0,00%</b>	
<b>NFR 5 - Waste</b>	<b>10,70</b>	<b>10,70</b>	<b>0,00</b>	<b>0,00%</b>	
<b>NFR 6 - Other</b>	<b>NA</b>				

The strong changes within the **National Total** reported for **2019 (-20.6 kt | -5.43 %)** are dominated by revised emission estimates for **NFR 2.L (-19.04 kt)**. In addition, several more or less significant revisions occur in NFRs **1, 2, 3 and 5**.

The most significant percental change occurs for **NFR 2.A.3 with plus 127 %**.

Table 2: Changes in emission estimates for 2019

	Submission 2021	Submission 2022	Difference		Reasoning
<b>NFR Sector</b>	<b>[kt]</b>			<b>relative</b>	<b>see description and reasoning in:</b>
<b>NATIONAL TOTAL</b>	<b>379,547</b>	<b>358,943</b>	<b>-20,60</b>	<b>-5,43%</b>	<b>sub-category chapters</b>
<b>NFR 1 - Energy</b>	<b>97,713</b>	<b>97,534</b>	<b>-0,18</b>	<b>-0,18%</b>	<b>sub-category chapters</b>
1.A.1.a	4,69	4,70	0,02	0,33%	<a href="#">here</a>
1.A.1.b	0,593	0,597	0,004	0,65%	<a href="#">here</a>
1.A.1.c	0,48	0,47	-0,01	-1,52%	<a href="#">here</a>
1.A.2.a	0,076	0,077	0,001	1,63%	<a href="#">here</a>
1.A.2.g vii	0,892	0,890	-0,002	-0,22%	<a href="#">here</a>
1.A.2.g viii	2,55	2,52	-0,03	-1,17%	<a href="#">here</a>
1.A.3.a i(i)	0,0766	0,0752	-0,0014	-1,81%	<a href="#">here</a>
1.A.3.a ii(i)	0,04	0,03	-0,01	-27,96%	<a href="#">here</a>
1.A.3.b i	2,88	2,74	-0,14	-4,90%	<a href="#">here</a>
1.A.3.b ii	1,21	1,19	-0,01	-1,07%	<a href="#">here</a>
1.A.3.b iii	1,75	1,76	0,01	0,44%	<a href="#">here</a>
1.A.3.b iv	0,99	0,98	-0,01	-1,10%	<a href="#">here</a>
1.A.3.c	8,65	8,67	0,02	0,23%	<a href="#">here</a>
1.A.3.d ii	1,03	0,92	-0,11	-11,10%	<a href="#">here</a>
1.A.4.a i	2,29	2,30	0,01	0,40%	<a href="#">here</a>
1.A.4.a ii	0,2012	0,2009	-0,0003	-0,14%	<a href="#">here</a>
1.A.4.b i	18,59	18,68	0,09	0,48%	<a href="#">here</a>
1.A.4.b ii	0,13	0,17	0,04	34,65%	<a href="#">here</a>
1.A.4.c i	0,52	0,49	-0,04	-7,17%	<a href="#">here</a>
1.A.4.c ii	3,08	3,08	0,00	0,12%	<a href="#">here</a>
1.A.4.c iii	0,020	0,013	-0,01	-34,68%	<a href="#">here</a>
1.A.5.a	0,02	0,03	0,01	52,85%	<a href="#">here</a>
1.A.5.b	0,11	0,09	-0,02	-18,50%	<a href="#">here</a>
1.B.1.b	5,55	5,56	0,01	0,21%	<a href="#">here</a>
<b>NFR 2 - IPPU</b>	<b>212,79</b>	<b>192,14</b>	<b>-20,64</b>	<b>-9,70%</b>	<b>sub-category chapters</b>
2.A.3	0,21	0,48	0,27	127%	<a href="#">here</a>
2.A.5.a	41,21	40,78	-0,43	-1,05%	<a href="#">here</a>
2.A.6	1,2034	1,2039	0,0005	0,04%	<a href="#">here</a>
2.B.10.a	2,14	0,57	-1,58	-73,47%	<a href="#">here</a>
2.C.2	0,00533	0,00538	0,00005	1,03%	<a href="#">here</a>
2.D.3.b	0,240	0,244	0,004	1,56%	<a href="#">here</a>
2.G	4,70	4,73	0,03	0,69%	<a href="#">here</a>
2.H.1	0,02399	0,02397	-0,00003	-0,11%	<a href="#">here</a>
2.L	110,62	91,58	-19,04	-17,21%	<a href="#">here</a>
<b>NFR 3 - Agriculture</b>	<b>60,31</b>	<b>60,45</b>	<b>0,14</b>	<b>0,23%</b>	<b>sub-category chapters</b>
3.B.1.a	5,95	6,27	0,32	5,43%	<a href="#">here</a>
3.B.1.b	3,67	3,62	-0,04	-1,16%	<a href="#">here</a>

	Submission 2021	Submission 2022	Difference		Reasoning
<b>NFR Sector</b>	<b>[kt]</b>			<b>relative</b>	<b>see description and reasoning in:</b>
<b>NATIONAL TOTAL</b>	<b>379,547</b>	<b>358,943</b>	<b>-20,60</b>	<b>-5,43%</b>	<b>sub-category chapters</b>
<b>NFR 1 - Energy</b>	<b>97,713</b>	<b>97,534</b>	<b>-0,18</b>	<b>-0,18%</b>	<b>sub-category chapters</b>
3.B.4.d	0,0135	0,0138	0,0003	2,35%	<a href="#">here</a>
3.B.4.e	0,15	0,16	0,01	6,67%	<a href="#">here</a>
3.B.4.g i	10,19	10,18	-0,01	-0,11%	<a href="#">here</a>
3.B.4.g ii	3,70	3,66	-0,04	-1,08%	<a href="#">here</a>
3.B.4.g iii	1,36	1,30	-0,06	-4,74%	<a href="#">here</a>
3.B.4.g iv	0,91	0,87	-0,03	-3,82%	<a href="#">here</a>
<b>NFR 5 - Waste</b>	<b>8,74</b>	<b>8,81</b>	<b>0,08</b>	<b>0,87%</b>	<b>sub-category chapters</b>
5.A	0,021	0,020	-0,001	-4,29%	<a href="#">here</a>
5.C.2	5,35	5,43	0,08	1,44%	<a href="#">here</a>
<b>NFR 6 - Other</b>	<b>NA</b>				