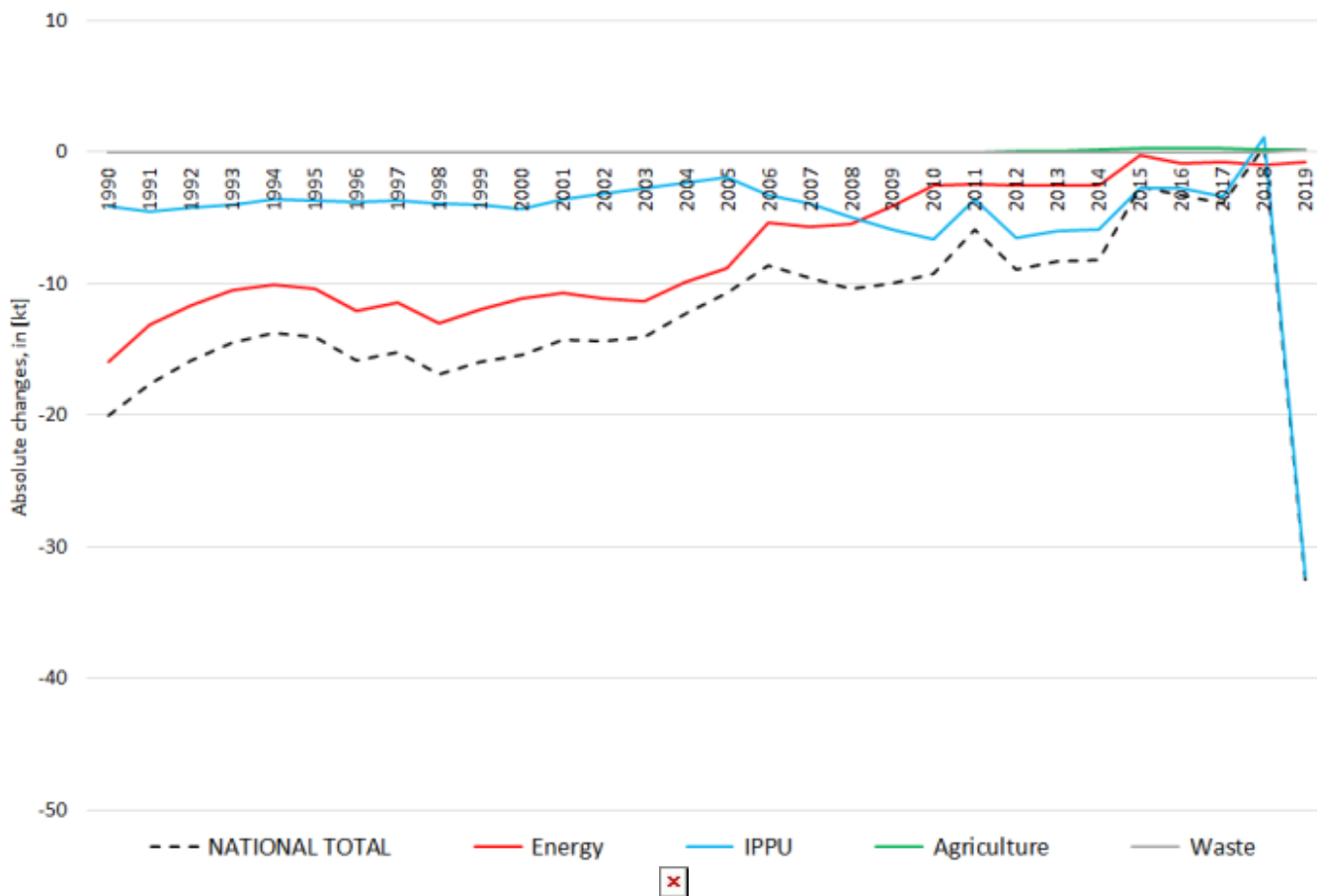


# Recalculations - Total Suspended Particles (TSP)

Revision of TSP emissions over time:



The small changes within the **National Total** reported for **1990 (+5.44 kt or +0.27 %)** are dominated by a revision of emission estimates for NFRs **1.A.3.b iii (-1.45 kt)** and **3.B.c (+6.01 kt)** together with less significant revisions in NFRs 1 and 3.

The strongest percental changes occurs for NFR **3.B.c with plus 35%**.

Table 1: Changes in emission estimates for 1990

	Submission 2022	Submission 2023	Difference		Reasoning
NFR Sector	[kt]		absolute	relative	see description and reasoning in:
<b>NATIONAL TOTAL</b>	<b>2.042,44</b>	<b>2.047,88</b>	<b>5,44</b>	<b>0,27%</b>	<b>sub-category chapters</b>
<b>NFR 1 - Energy</b>	<b>1.401,92</b>	<b>1.401,35</b>	<b>-0,56</b>	<b>-0,04%</b>	<b>sub-category chapters</b>
1.A.2.g vii	7,18	7,19	0,01	0,15%	<a href="#">here</a>
1.A.3.a i(i)	0,05	0,05	0,00	-6,41%	<a href="#">here</a>
1.A.3.a ii(i)	0,04	0,04	0,00	-4,45%	<a href="#">here</a>
1.A.3.b i	17,17	17,87	0,70	4,09%	<a href="#">here</a>
1.A.3.b ii	2,71	2,83	0,12	4,32%	<a href="#">here</a>
1.A.3.b iii	29,56	28,11	-1,45	-4,90%	<a href="#">here</a>
1.A.3.b iv	2,23	2,32	0,09	3,81%	<a href="#">here</a>
1.A.4.a ii	1,53	1,53	0,00	-0,17%	<a href="#">here</a>
1.A.4.b ii	0,29	0,29	0,00	-0,11%	<a href="#">here</a>
1.A.4.c ii	12,96	12,93	-0,02	-0,16%	<a href="#">here</a>
<b>NFR 2 - IPPU</b>	<b>562,34</b>	<b>562,34</b>	<b>0,00</b>	<b>0,00%</b>	
<b>NFR 3 - Agriculture</b>	<b>67,48</b>	<b>73,48</b>	<b>6,00</b>	<b>8,89%</b>	<b>sub-category chapters</b>
3.B.4.g i	10,16	10,15	-0,01	-0,08%	<a href="#">here</a>

	Submission 2022	Submission 2023	Difference		Reasoning
<b>NFR Sector</b>	<b>[kt]</b>			<b>relative</b>	<b>see description and reasoning in:</b>
<b>NATIONAL TOTAL</b>	<b>2.042,44</b>	<b>2.047,88</b>	<b>5,44</b>	<b>0,27%</b>	<b>sub-category chapters</b>
<b>NFR 1 - Energy</b>	<b>1.401,92</b>	<b>1.401,35</b>	<b>-0,56</b>	<b>-0,04%</b>	<b>sub-category chapters</b>
3.D.c	17,44	23,45	6,01	34,46%	<a href="#">here</a>
<b>NFR 5 - Waste</b>	<b>10,70</b>	<b>10,70</b>	<b>0,00</b>	<b>0,00%</b>	
<b>NFR 6 - Other</b>	<b>NA</b>				

The strong changes within the **National Total** reported for **2019 (-20.6 kt or -5.43 %)** are dominated by revised emission estimates for **NFR 2.L (-19.04 kt)**. In addition, several more or less significant revisions occur in NFRs **1, 2, 3 and 5**.

The most significant percental change occurs for **NFR 2.A.3 with plus 127 %**.

Table 2: Changes in emission estimates for 2019

	Submission 2022	Submission 2023	Difference		Reasoning
<b>NFR Sector</b>	<b>[kt]</b>			<b>relative</b>	<b>see description and reasoning in:</b>
<b>NATIONAL TOTAL</b>	<b>337,470</b>	<b>335,708</b>	<b>-1,76</b>	<b>-0,52%</b>	<b>sub-category chapters</b>
<b>NFR 1 - Energy</b>	<b>87,766</b>	<b>85,415</b>	<b>-2,35</b>	<b>-2,68%</b>	<b>sub-category chapters</b>
1.A.1.a	4,11	4,07	-0,03	-0,80%	<a href="#">here</a>
1.A.1.b	0,514	0,541	0,027	5,35%	<a href="#">here</a>
1.A.1.c	0,45	0,44	-0,01	-2,85%	<a href="#">here</a>
1.A.2.a	0,070	0,069	-0,002	-2,58%	<a href="#">here</a>
1.A.2.g vii	0,826	0,840	0,014	1,69%	<a href="#">here</a>
1.A.2.g viii	2,45	2,69	0,23	9,59%	<a href="#">here</a>
1.A.3.a i(i)	0,033	0,031	-0,002	-6,61%	<a href="#">here</a>
1.A.3.a ii(i)	0,01	0,01	0,00	-6,17%	<a href="#">here</a>
1.A.3.b i	2,20	2,11	-0,09	-4,19%	<a href="#">here</a>
1.A.3.b ii	1,083	1,086	0,003	0,32%	<a href="#">here</a>
1.A.3.b iii	1,52	0,89	-0,62	-41,08%	<a href="#">here</a>
1.A.3.b iv	1,00	1,03	0,03	2,96%	<a href="#">here</a>
1.A.3.b vi	16,85	16,78	-0,07	-0,43%	<a href="#">here</a>
1.A.3.b vii	14,23	14,18	-0,05	-0,35%	<a href="#">here</a>
1.A.3.c	8,09	8,67	0,58	7,13%	<a href="#">here</a>
1.A.3.d ii	0,7986	0,7990	0,0004	0,05%	<a href="#">here</a>
1.A.4.a i	2,24	2,33	0,10	4,27%	<a href="#">here</a>
1.A.4.a ii	0,192	0,193	0,002	0,88%	<a href="#">here</a>
1.A.4.b i	17,27	17,03	-0,24	-1,41%	<a href="#">here</a>
1.A.4.b ii	0,16	0,13	-0,03	-21,14%	<a href="#">here</a>
1.A.4.c i	0,481	0,480	-0,001	-0,13%	<a href="#">here</a>
1.A.4.c ii	3,04	3,11	0,07	2,40%	<a href="#">here</a>
1.A.5.a	0,038	0,041	0,002	6,40%	<a href="#">here</a>
1.A.5.b	0,06	0,06	-0,01	-8,55%	<a href="#">here</a>
1.B.1.a	5,46	3,22	-2,24	-41,01%	<a href="#">here</a>
1.B.1.b	4,529	4,530	0,001	0,02%	<a href="#">here</a>
<b>NFR 2 - IPPU</b>	<b>183,76</b>	<b>182,20</b>	<b>-1,56</b>	<b>-0,85%</b>	<b>sub-category chapters</b>
2.A.1	1,57	0,78	-0,79	-50,35%	<a href="#">here</a>
2.A.3	0,45	0,47	0,02	3,59%	<a href="#">here</a>
2.A.5.a	41,62	41,62	0,00	0,00%	<a href="#">here</a>
2.A.5.b	36,30	35,31	-0,99	-2,72%	<a href="#">here</a>
2.B.7	0,10	0,14	0,04	35,20%	<a href="#">here</a>
2.C.2	0,00538	0,00542	0,00004	0,80%	<a href="#">here</a>
2.G	2,90	2,90	0,00	0,01%	<a href="#">here</a>
2.H.1	0,02	0,18	0,16	710%	<a href="#">here</a>
2.H.2	0,93	0,93	0,01	0,73%	<a href="#">here</a>
2.I	1,33	1,33	0,00	0,00%	<a href="#">here</a>
<b>NFR 3 - Agriculture</b>	<b>60,26</b>	<b>62,41</b>	<b>2,15</b>	<b>3,57%</b>	<b>sub-category chapters</b>

	Submission 2022	Submission 2023	Difference		Reasoning
<b>NFR Sector</b>	<b>[kt]</b>			<b>relative</b>	<b>see description and reasoning in:</b>
<b>NATIONAL TOTAL</b>	<b>337,470</b>	<b>335,708</b>	<b>-1,76</b>	<b>-0,52%</b>	<b>sub-category chapters</b>
<b>NFR 1 - Energy</b>	<b>87,766</b>	<b>85,415</b>	<b>-2,35</b>	<b>-2,68%</b>	<b>sub-category chapters</b>
3.B.3	16,99	15,66	<u>-1,33</u>	-7,84%	<a href="#">here</a>
3.B.4.g i	10,29	10,01	-0,28	-2,75%	<a href="#">here</a>
3.D.c	17,27	21,04	<u>3,77</u>	21,81%	<a href="#">here</a>
<b>NFR 5 - Waste</b>	<b>5,68</b>	<b>5,68</b>	<b>0,00</b>	<b>-0,02%</b>	<b>sub-category chapters</b>
5.A	0,020	0,019	-0,001	-5,35%	<a href="#">here</a>
<b>NFR 6 - Other</b>	<b>NA</b>				