

# Explanation of Key Trends - Fine Particulate Matter (PM<sub>10</sub>)

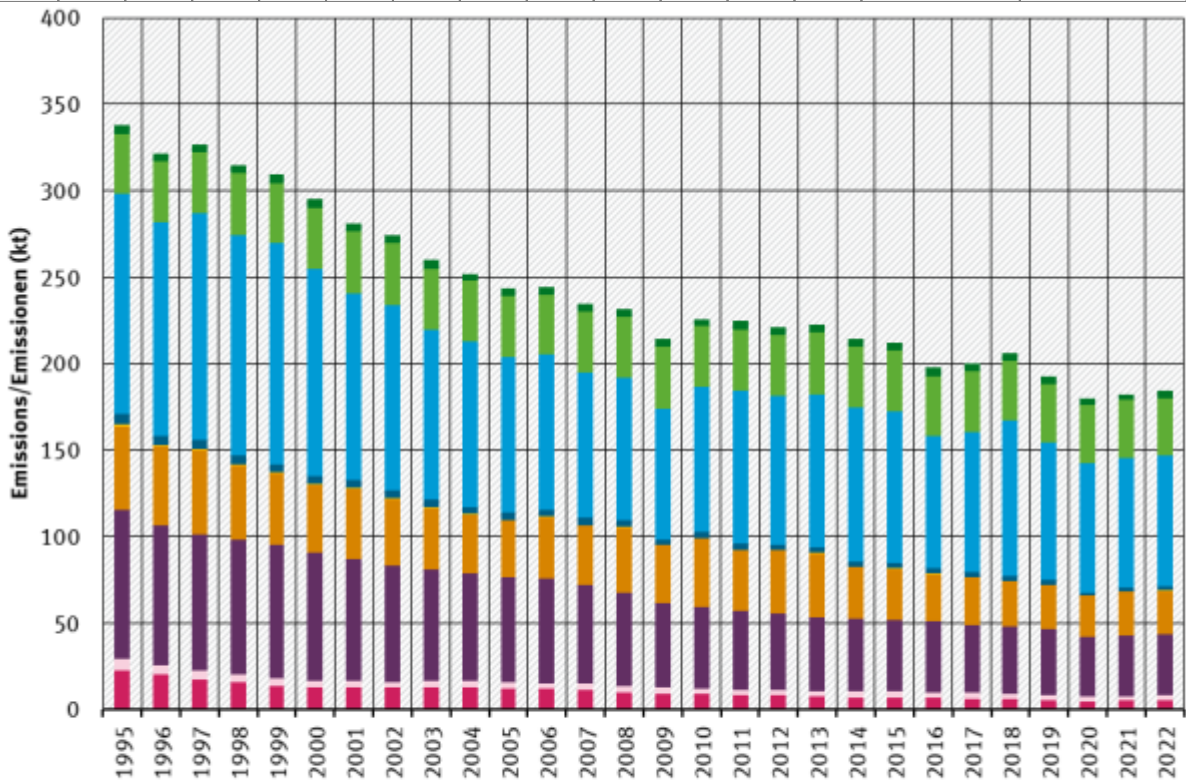
## Main drivers

Between 1995 and 2019 the **total PM10 emissions** dropped 41.2%. The Main Drivers for PM<sub>10</sub> emissions are **Fuel Combustion (NFR 1.A)** with 48% of total 1995 emissions and a 57% reduction between 1995-2019 and as a sum the **Industrial Processes (NFR 2)** (and especially **Handling of Bulk Products NFR 2.L** therein) with 39% of total 1995 emissions and a 33% reduction between 1995-2019.

Within NFR 1.A, **Transport (NFR 1.A.3)** produces the biggest part of PM<sub>10</sub> emissions. Here, about 75% of 2019 Transport PM<sub>10</sub> emissions are produced by **Road Transport (NFR 1.A.3.b)**, half of which is directly caused by **fuel combustion (NFR 1.A.3.b.i - iv)** and the other half by **road abrasion and tyre and brake wear (NFR 1.A.3.b.vi - vii)**.

PM<sub>10</sub> Emissions 1990-2019

Total Emissions (kt)												Trend: latest compared to		
1995	2000	2005	2010	2011	2012	2013	2014	2015	2016	2017	2018	2019	1995	last years
346	303	248	228	227	224	226	218	214	200	202	207	204	↓ -41.2%	→



- 1.A.1 Energy Industries
  - 1.A.3 Transport
  - 1.A.5 Other (military)
  - 2. Industry
  - 5. Waste
- 1.A.2 Manufacturing Industries and Construction
  - 1.A.4 Other Sectors
  - 1.B Fugitive Emissions from Fuels
  - 3. Agriculture

## PM<sub>10</sub> trend by sector