

2.L - Other Production, Consumption, Storage, Transportation or Handling of Bulk Products

Short description

Within the NFR tables, category 2.L is displayed to include emissions from “other production, consumption, storage, transportation or handling of bulk products”. Here, Germany reports particulate matter (PM) emissions from both the handling (loading and unloading) of bulk goods as well as diffuse PM emissions from industrial establishments.

Therefore, in the understanding of the inventory compiler, respective *emissions from storage, handling and transport of mineral, chemical and metal products* (NFRs 2.A.5.b, 2.B.10.b und 2.C.7.d) are included here.

Category Code	Method	AD	EF
2.L	T1	NS	CS
taking into account emissions from:			
2.L(a) Handling of bulk products	T1	NS	CS
2.L(b) Diffuse emissions from industrial establishments	T1	NS	CS
Method(s) applied			
D	Default		
T1	Tier 1 / Simple Methodology *		
T2	Tier 2*		
T3	Tier 3 / Detailed Methodology *		
C	CORINAIR		
CS	Country Specific		
M	Model		
* as described in the EMEP/EEA Emission Inventory Guidebook - 2019, in category chapters.			
(source for) Activity Data			
NS	National Statistics		
RS	Regional Statistics		
IS	International Statistics		
PS	Plant Specific		
As	Associations, business organisations		
Q	specific Questionnaires (or surveys)		
M	Model / Modelled		
C	Confidential		
(source for) Emission Factors			
D	Default (EMEP Guidebook)		
CS	Country Specific		
PS	Plant Specific		
M	Model / Modelled		
C	Confidential		

	PM _{2.5}	PM ₁₀	TSP
	L/-	L/T	L/T
L/-	key source by L evel only		
-/T	key source by T rend only		
L/T	key source by both L evel and T rend		
-/-	no key source for this pollutant		
IE	emission of specific pollutant I ncluded E lsewhere (i.e. in another category)		
NE	emission of specific pollutant N ot E stimated (yet)		
NA	specific pollutant not emitted from this source or activity = N ot A pplicable		
*	no analysis done		

Even though these emissions are reported as a sum under NFR 2.L, this report provides separate specific information regarding emission from the handling of bulk products (2.L(a)) and from industrial establishments (2.L(b)). For these **detailed information**, please refer to the **sub-chapters** linked above.

Methodology

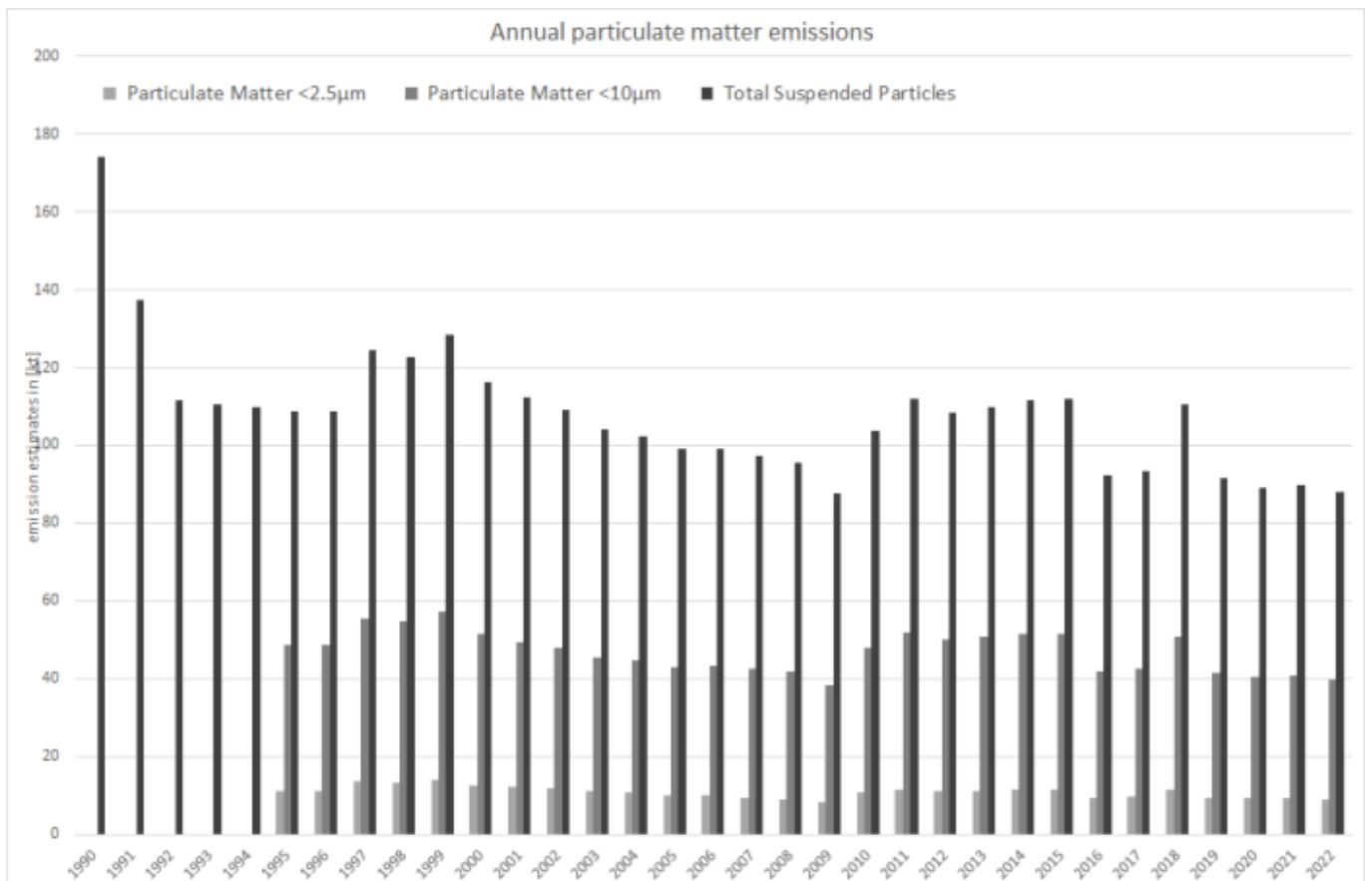
For specific information on applied methods, activity data and emission factors please refer to the sub-chapters linked above.

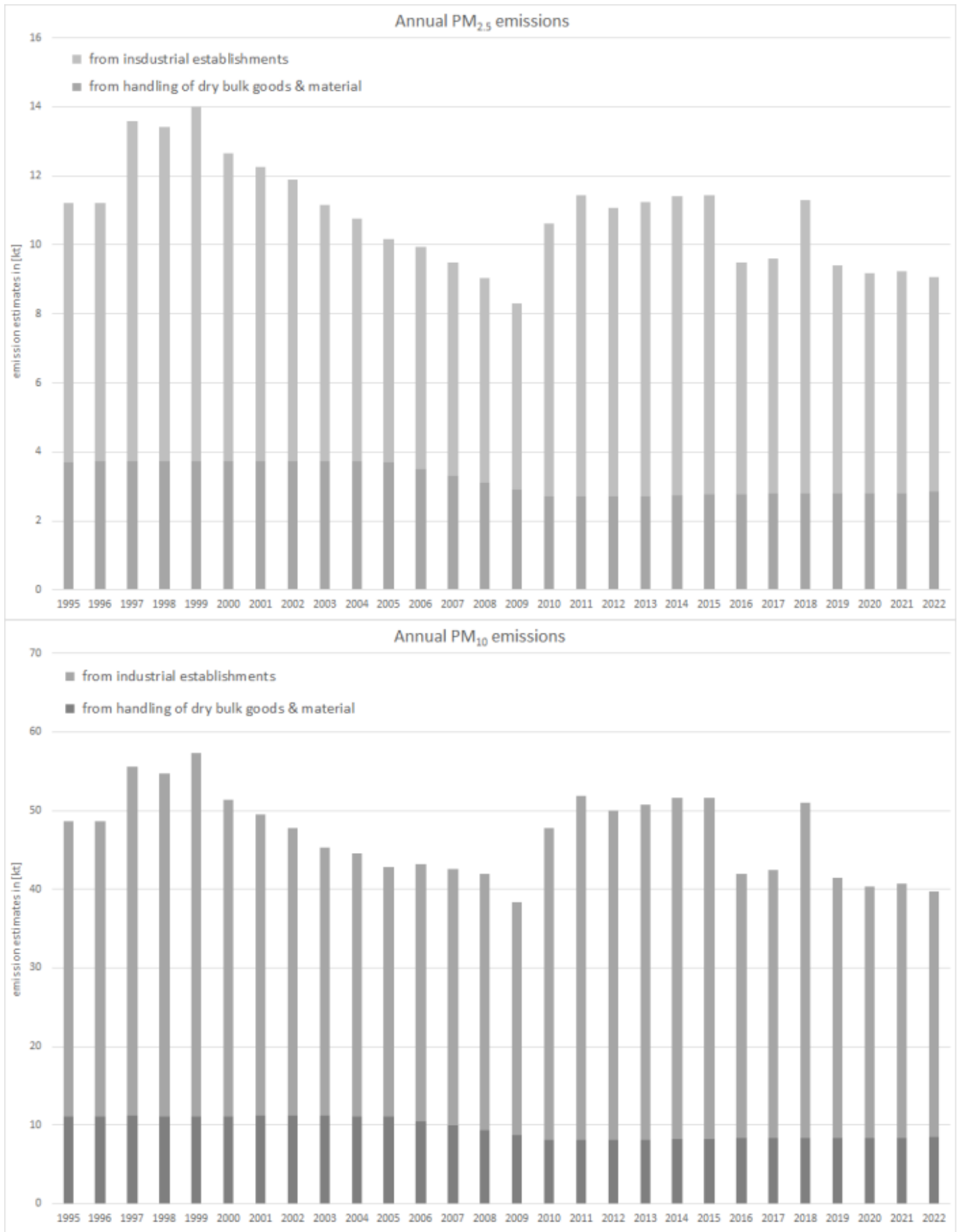
Discussion of emission trends

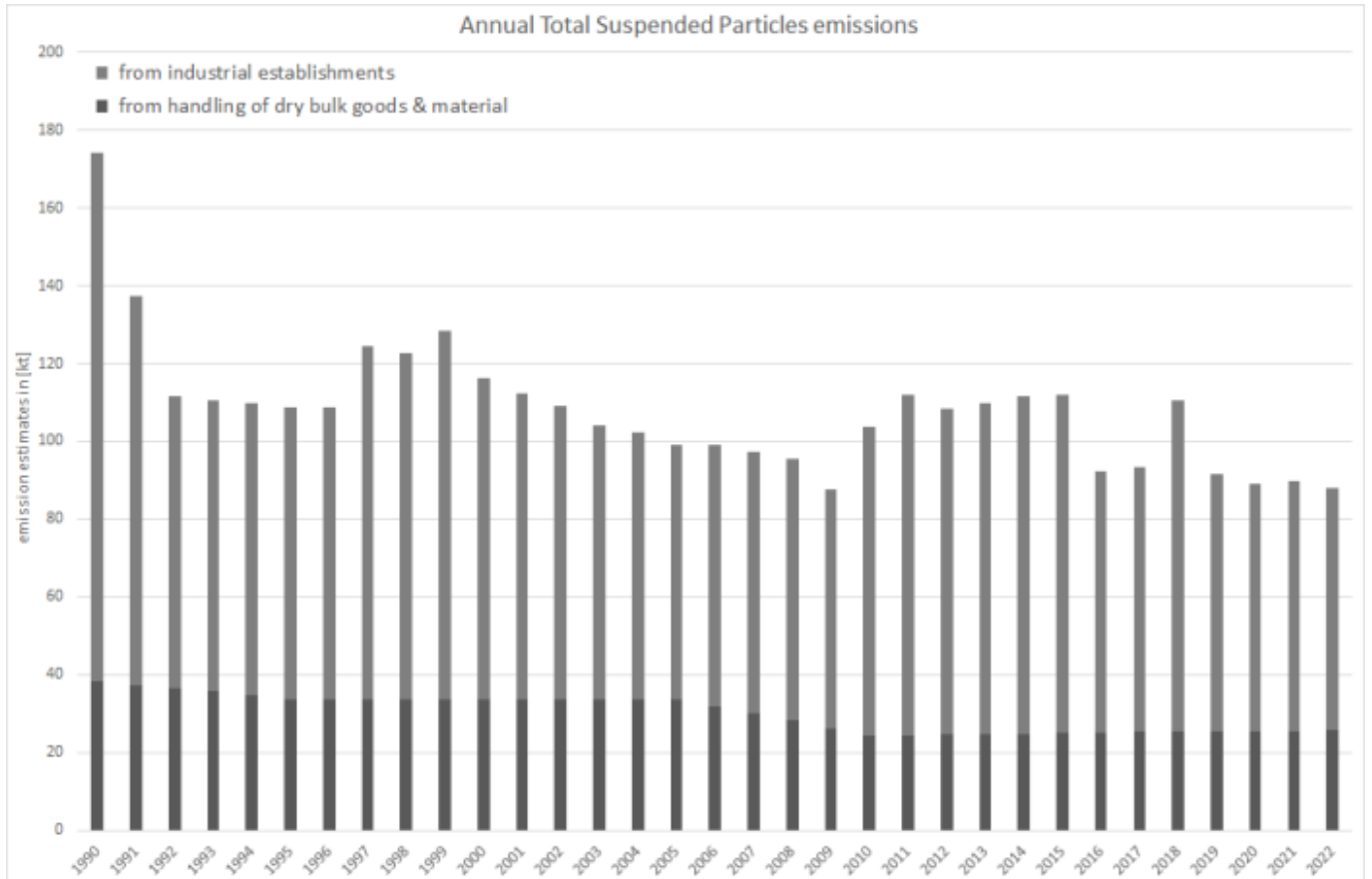
Table: Outcome of Key Category Analysis

for:	TSP	PM₁₀	PM_{2.5}
by:	L/T	L/-	L/-

In general, diffuse particulate matter emissions depend strongly on the amounts of dry bulk goods handled and transported. In addition, due to efforts to prevent such particle emissions, the time series of the emission factors applied for all three fractions of particulate matter show a falling trend.







Recalculations



With **activity data and emission factors remaining unrevised**, no recalculations were carried out compared to the previous submission.

Planned improvements



For improvements planned for NFR sub-categories 2.L(a) and 2.L(b) please refer to the corresponding sub-chapters linked above.