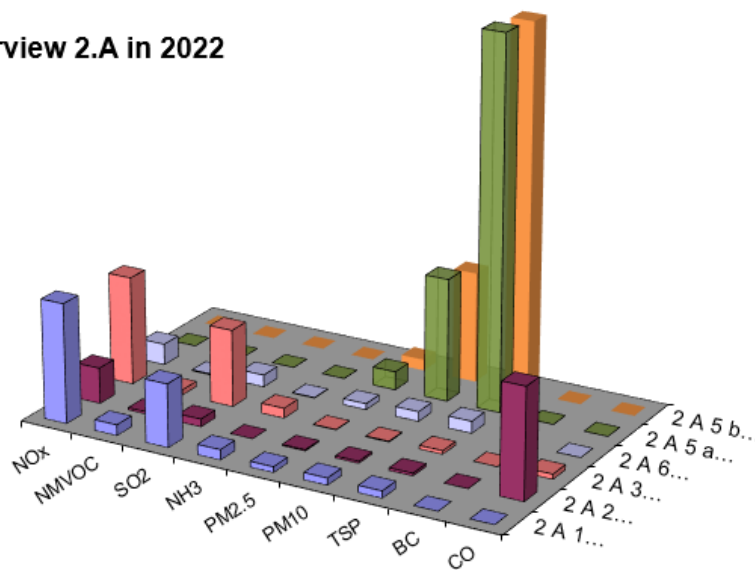


2.A - Mineral Industry (OVERVIEW)

| |
|---|
| 2.A - Mineral Industry |
| 2.A.1 Cement Production |
| 2.A.2 Lime Production |
| 2.A.3 Glass Production |
| 2.A.5.a Quarrying and Mining of Minerals other than Coal |
| 2.A.5.b Construction and Demolition |
| 2.A.5.c Storage, Handling and Transport of Mineral Products |
| 2.A.6 Other Mineral Products: Ceramics |

The Mineral Industry comprises six different sub-categories partly divergent to reporting format of Greenhouse Gases (CRF). The main categories are the Cement Production (2.A.1), Lime Production (2.A.2), Glass Production (2.A.3). But further mineral industries are important regarding other specific emissions, highlighted here: Mining other than coal (2.A.5.a), Construction (2.A.5.b) and Ceramics Production (2.A.6).

comparative Overview 2.A in 2022

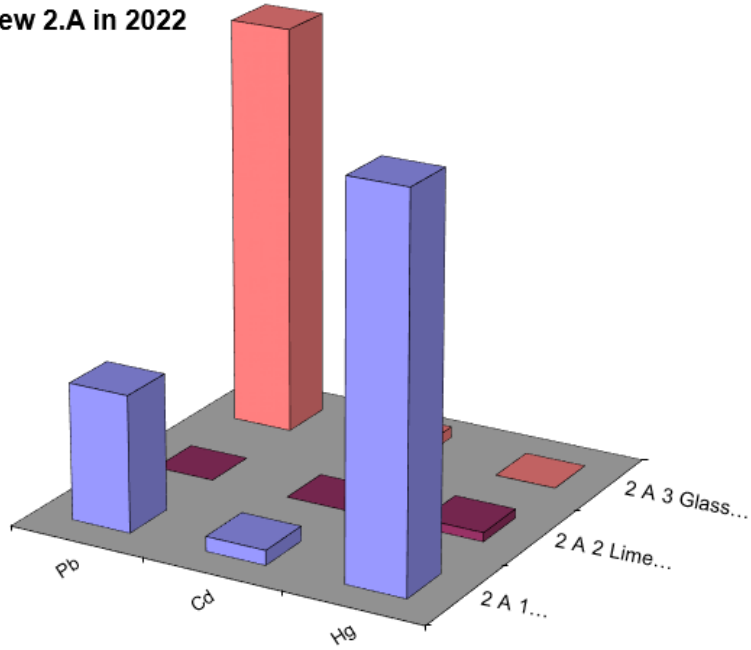


all values in Gg

| | NOx | NMVOC | SO2 | NH3 | PM2.5 | PM10 | TSP | BC | CO |
|--------------------------|------|-------|-----|-----|-------|------|------|-----|------|
| 2 A 1 Cement Production | 12,2 | 1,1 | 6,4 | 1,0 | 0,6 | 0,7 | 0,7 | 0,0 | 0,0 |
| 2 A 2 Lime Production | 3,6 | 0,2 | 0,8 | 0,0 | 0,1 | 0,2 | 0,3 | 0,0 | 11,2 |
| 2 A 3 Glass Production | 11,0 | 0,5 | 7,8 | 1,0 | 0,0 | 0,1 | 0,4 | 0,0 | 0,5 |
| 2 A 6 Ceramic Production | 2,1 | 0,1 | 1,2 | 0,1 | 0,6 | 1,0 | 1,2 | 0,0 | 0,0 |
| 2 A 5 a Mining | 0,0 | 0,0 | 0,0 | 0,0 | 1,9 | 12,5 | 37,8 | 0,0 | 0,0 |
| 2 A 5 b Construction | 0,0 | 0,0 | 0,0 | 0,0 | 1,1 | 11,2 | 37,4 | 0,0 | 0,0 |

Emissions of air pollutants

comparative Overview 2.A in 2022



all values in Mg

| | Pb | Cd | Hg |
|-------------------------|------|------|------|
| 2 A 1 Cement Production | 0,22 | 0,02 | 0,62 |
| 2 A 2 Lime Production | 0,00 | 0,00 | 0,01 |
| 2 A 3 Glass Production | 0,65 | 0,02 | 0,00 |

Emissions of heavy metals

Discussion of emission trends The steep reduction especially for TSP and SO₂ at the beginning of the 1990s was due especially to closures in the eastern German industrial sector. The source for emissions data of year 1990 for eastern Germany is in cases of TSP and SO₂ the last statistic of the GDR, not an old emission factor from calculation.