



Projections have not yet been updated for the 2023 submission. The content below is outdated.

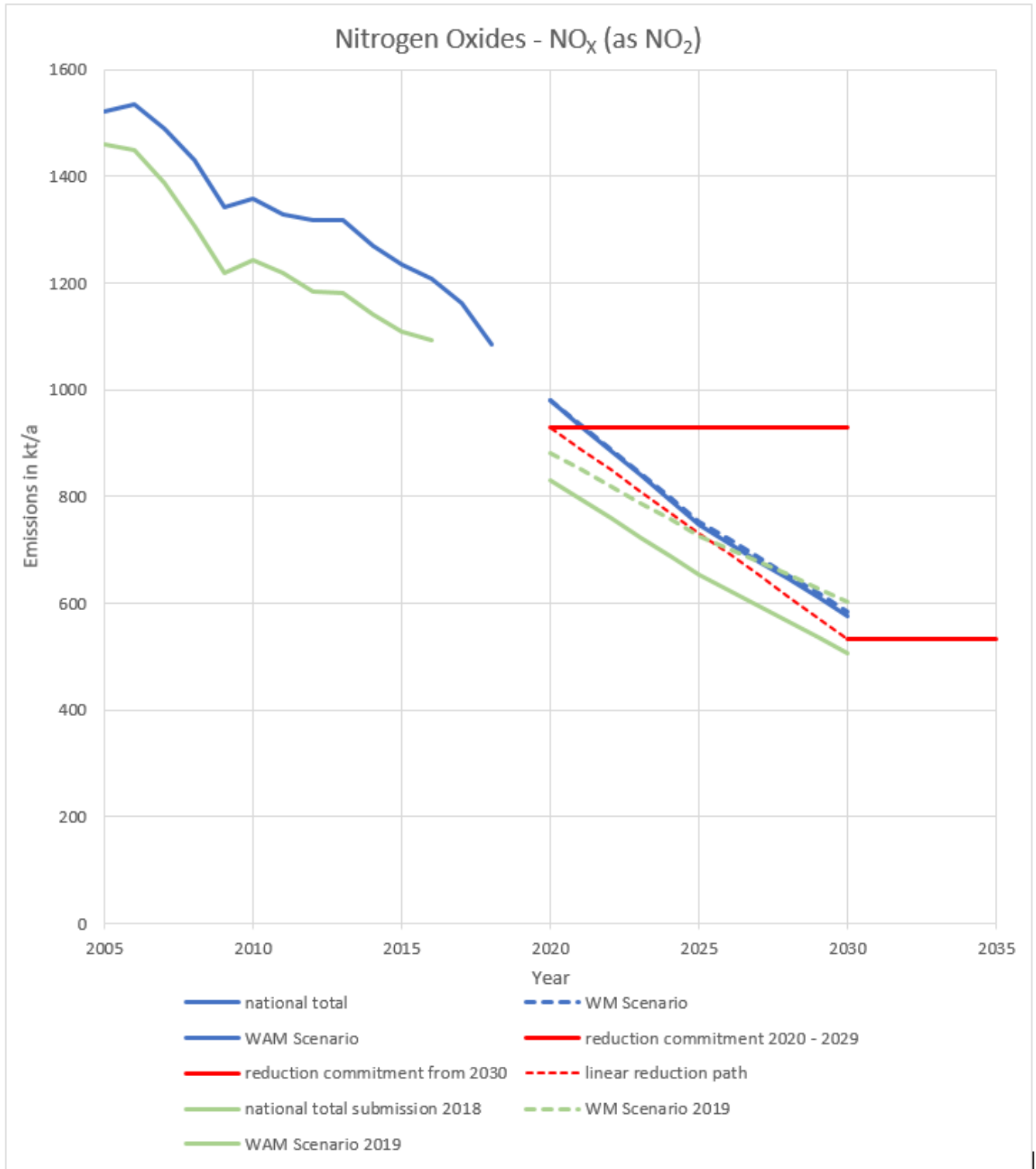
Recalculations

Due to recalculations for the emission inventory submission 2020, all emission reduction potentials had to be updated compared to the emission inventory submission 2018, upon which the emission projections reporting in 2019 was based. Furthermore, measures that had been included in the former WAM scenario have now been integrated in the WM scenario, as they were put into force in the meantime (e. g. 44th BImSchV). In addition, updated GHG emission projections using most recent projections of economic and other parameters result in a new projection of activity rates that needs to be considered for updating the emission projections of air pollutants.

The following figures show the differences between submission 2018 and 2020 for past emissions as well as the differences between the emission projections reported in 2019 and the current projections in the WM and the WAM scenario for each pollutant. For each pollutant a brief explanation of the most relevant reasons for the occurring differences is given.

Nitrogen Oxide (NO_x)

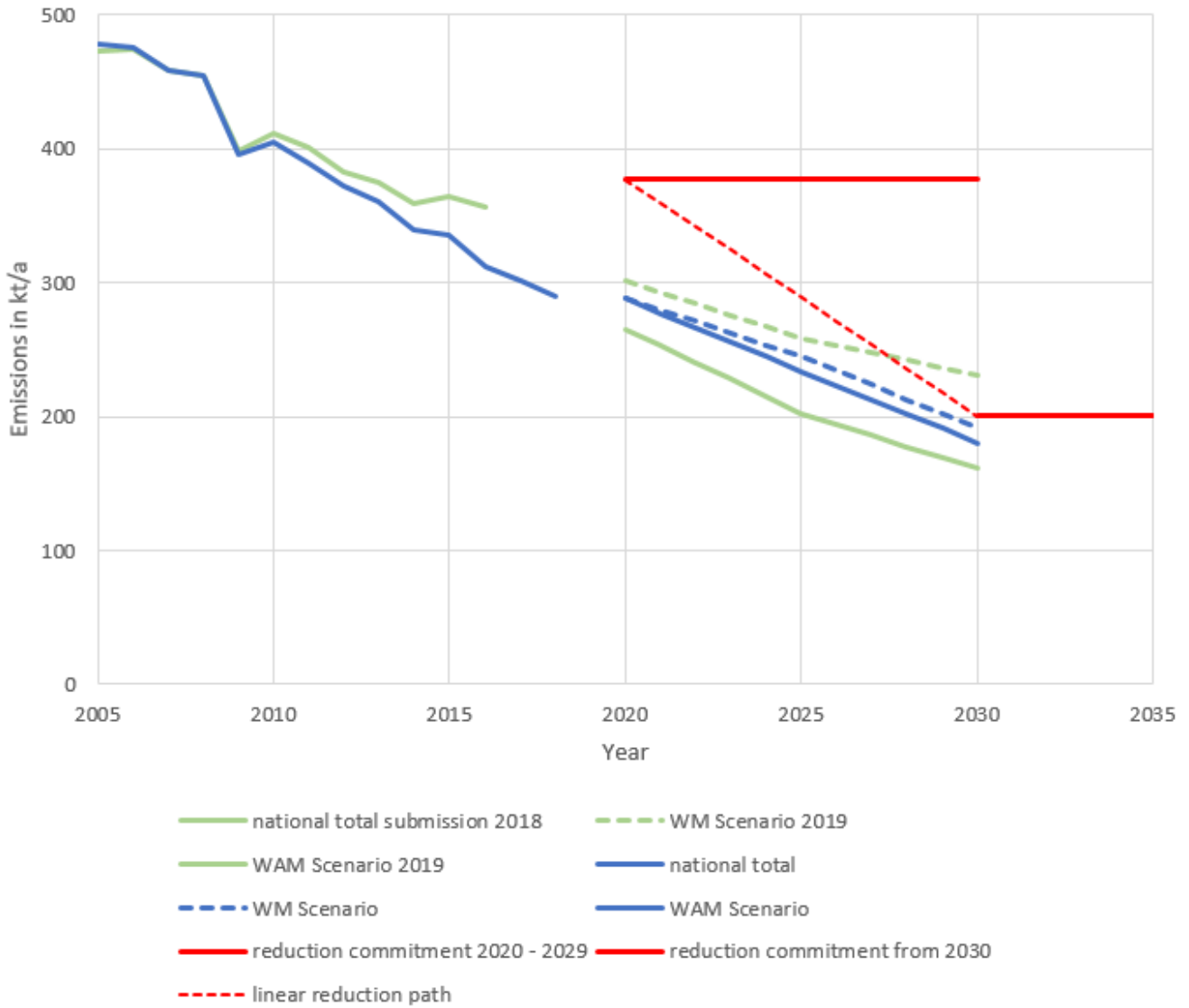
For NO_x a new version of the HBEFA (4.1) was used for calculating past emissions of road transport in the submission 2020 leading to higher historical emissions for all vehicle categories (HDV, LDV, PC). The vehicles with higher emission factors compared to former HBEFA versions stay in the fleet until 2030. This also explains the differences between the two WAM scenarios. Whereas the WM scenarios show a similar difference in 2020, caused by the same reason, this is nearly compensated until 2030, where the current WM scenario ends up with lower emissions than the WM scenario from 2019. This can be explained by the coal phase-out, that has been taken from the former WAM into the current WM scenario leading to lower projected emissions from the energy sector.



Sulfur Dioxide (SO₂)

The coal phase-out is also the reason for the differences between the two WM scenarios for SO₂. Furthermore, the reduction potential had been overestimated in the WAM scenario from 2019. This can be explained by a bug in calculating sulphur dioxide emissions from refineries in the 2019 WAM scenario, that more than halved the emission factors for SO₂ in this sector unintentionally.

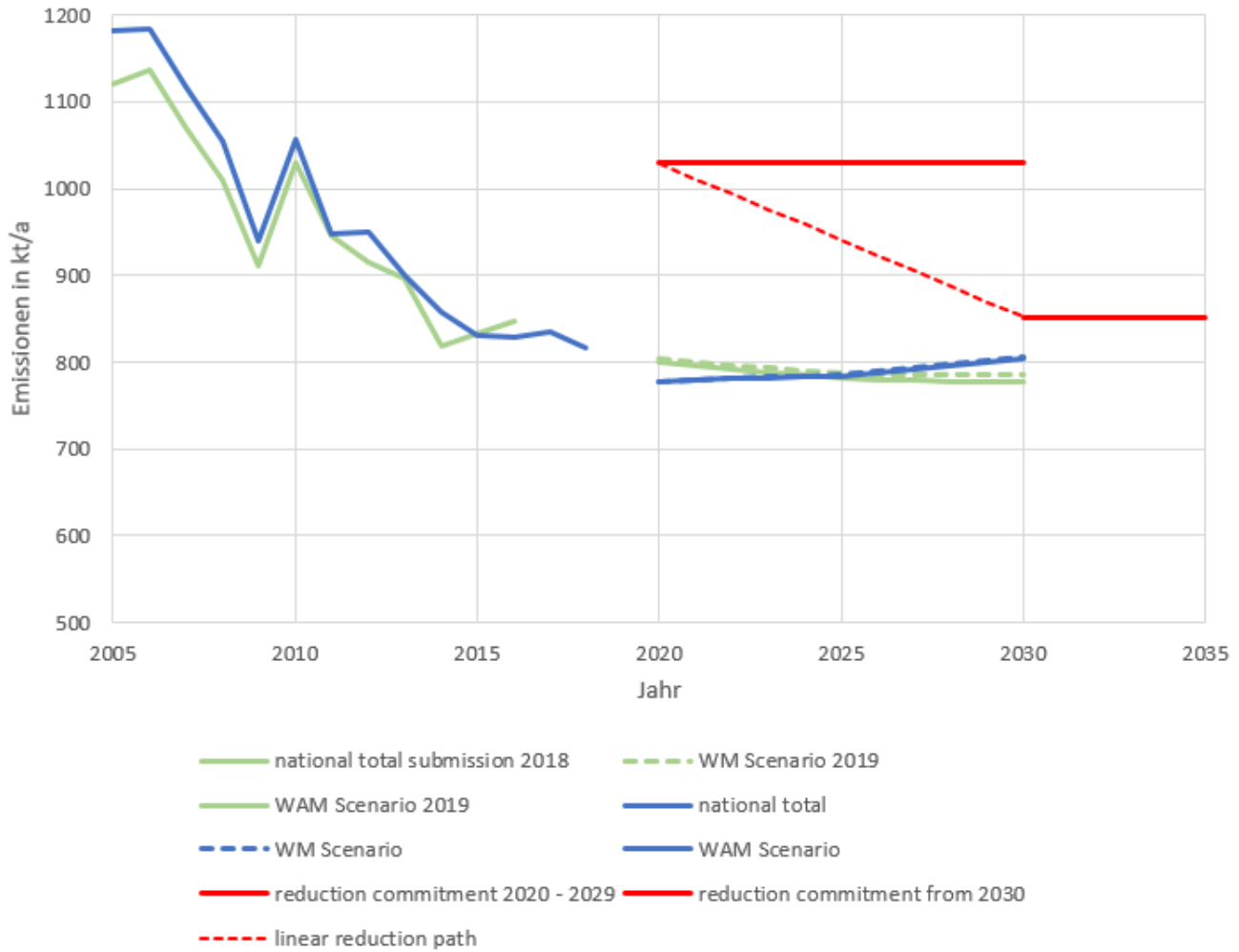
Sulfur Oxides - SO2



Non-Methane Volatile Organic Compounds (NMVOC)

The current NMVOC emission projections show a different trend than the 2019 projections in both scenarios, caused by updated economic projections, which strongly influence the NMVOC emission projections from solvent production and use.

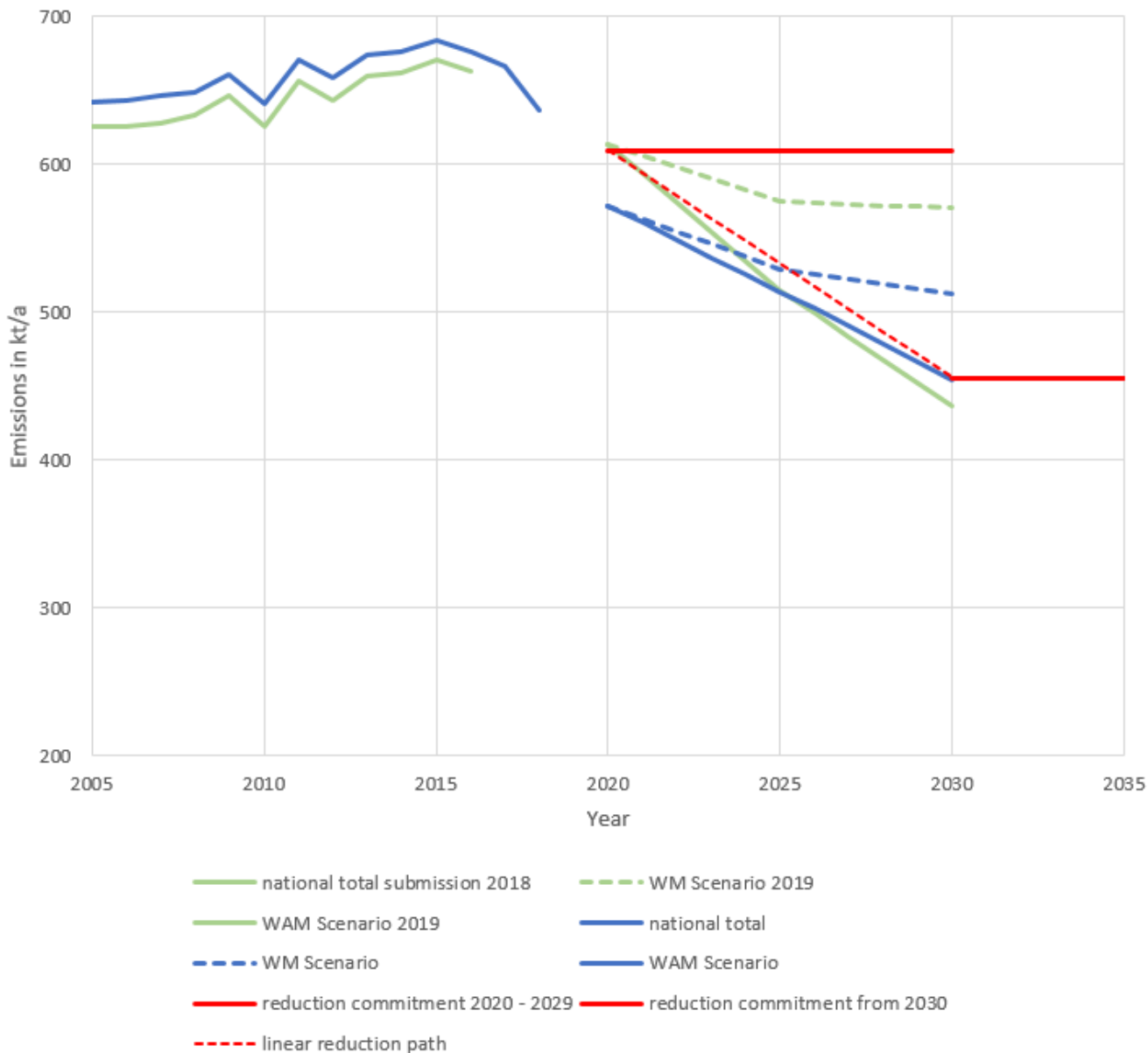
Non-Methane Volatile Organic Compounds - NMVOC



Ammonia (NH₃)

The current WM scenario for NH₃ shows a significant decrease compared to the 2019 WM scenario mainly caused by the assumed effects of the new Fertilizing Ordinance (DÜV 2020) from 2020. However, the remaining reduction potentials in the current WAM scenario result in a less steep decrease from 2020 to 2030 than in the 2019 WAM scenario. The assumptions for calculating the reduction potential of measures in the WAM scenario were carefully updated by the Thünen Institute according to current political activities and incentives for their implementation in practice as described above.

Ammonia - NH₃

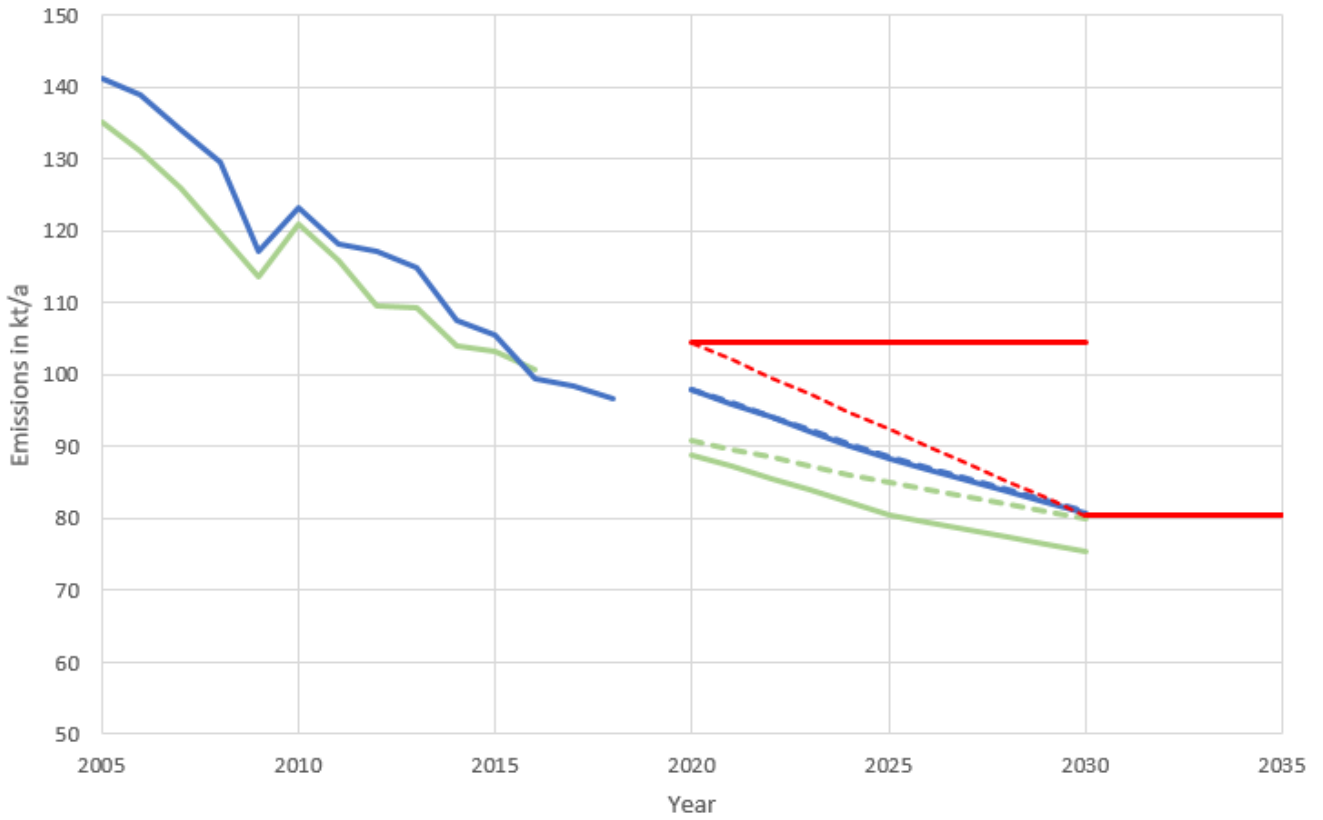


Fine Particulate Matter (PM_{2.5})

For fine PM (PM_{2.5}), the recalculations for past emissions are not that relevant. Nevertheless, the projected emissions are higher than those reported in 2019, at least compared to the former WAM scenario. This is mainly caused by three effects:

First, there are higher PM_{2.5} emission factors in the HBEFA 4.1 also influencing the future fleet (increasing the projection in 2030 by about 1.5 kt). Second, there is a higher projected use of solid biomass in small combustion installations due to climate protection policies that are still promoting biomass as a renewable and climate friendly energy source ignoring the antagonism with other environmental goals (increasing the projection in 2030 by about 1.3 kt). And third, we applied a different methodology for the projection of activity rates in certain industrial sectors that have no GHG emissions and therefore no projection of activity rates in the underlying dataset (increasing the projection in 2030 by about 1.5 kt). While assuming the latest historical activity rate as constant for projections reported in 2019 (that means using the value of 2016 from the emission inventory submission 2018), for the current projections the average of the last 10 years (2008-2018 according to submission 2020) was set constant for the projection years. This leads for example, to significantly higher emissions in the source category handling and storage of bulk products. However, in most cases estimates can be considered conservative.

Fine Particulate Matter - PM_{2.5}



- national total submission 2018
- WAM Scenario 2019
- WM Scenario
- reduction commitment 2020 - 2029
- linear reduction path
- WM Scenario 2019
- national total
- WAM Scenario
- reduction commitment from 2030