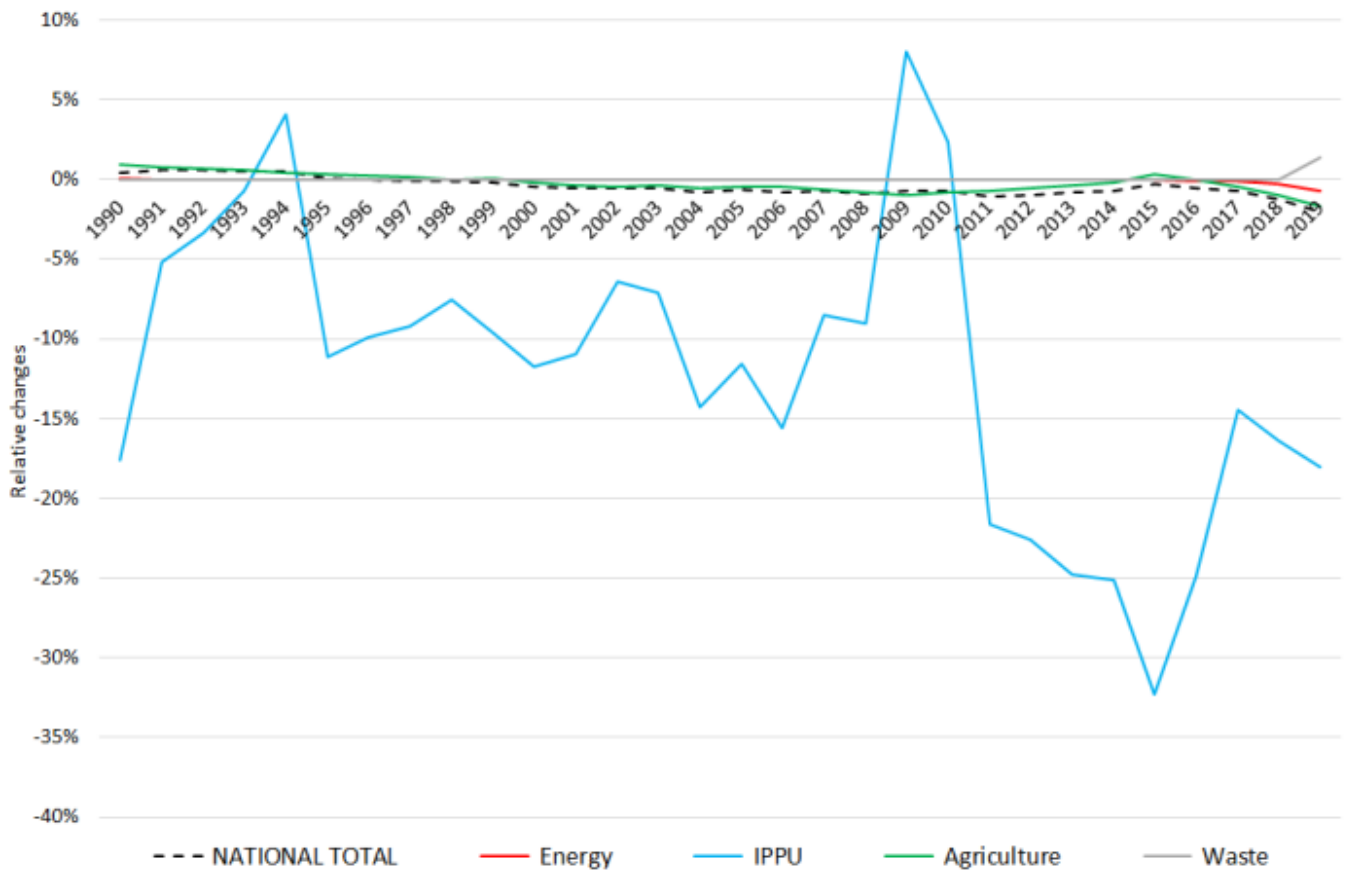
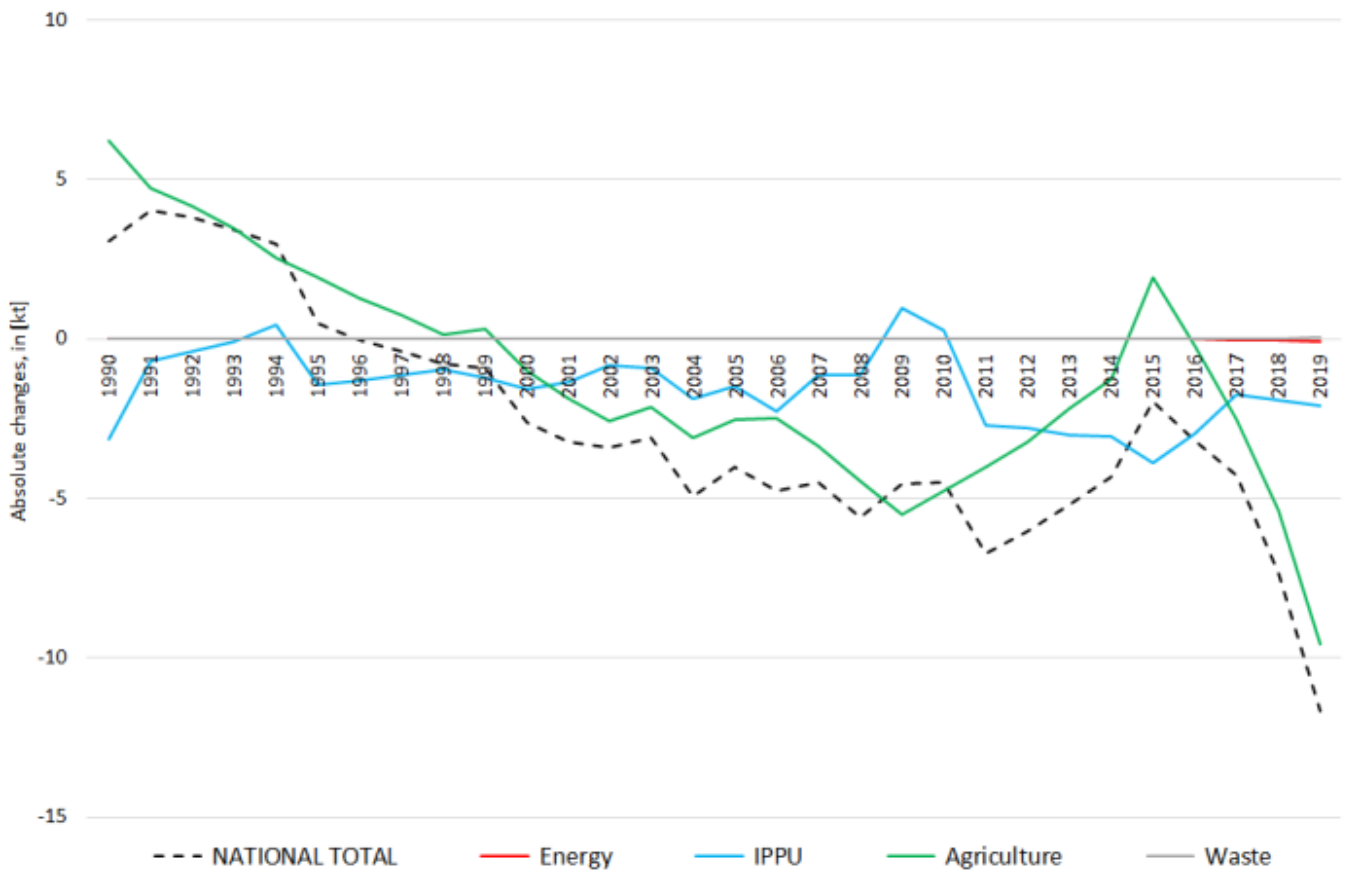


Recalculations - Ammonia

Revision of NH₃ emissions over time:



The small changes within the **National Total** reported for **1990 (-3.1 kt or -0.43 %)** result almost entirely from revisions in NFRs **2.B.10.a** (-3.14 kt), **3.B.3** (+4.69 kt) and **3.D.a.2.a** (+1.54 kt) together with less significant changes throughout NFRs 1 and 2.

However, the most significant percent change occurs for **NFR 1.A.3.d ii with minus 54 %**.

Table 1: Changes in emission estimates for 1990

NFR Sector	Submission 2021	Submission 2022	Difference		Reasoning
	[kt]			relative	
NATIONAL TOTAL	715,09	718,16	3,07	0,43%	see description and reasoning in: sub-category chapters
NFR 1 - Energy	15,53	15,54	0,01	0,03%	sub-category chapters
1.A.3.b iii	0,08	0,08	0,00	0,03%	here
1.A.3.c	0,02	0,03	0,01	38,23%	here
1.A.3.d ii	0,01	0,01	0,00	-24,12%	here
1.A.4.b ii	0,000162	0,000160	-0,000003	-1,71%	here
1.A.4.c iii	0,0002	0,0001	-0,0001	-54,03%	here
1.A.5.b	0,3000	0,2999	-0,0001	-0,05%	here
NFR 2 - IPPU	17,81	14,68	-3,14	-17,60%	sub-category chapters
2.B.10.a	9,57	6,44	-3,14	-32,76%	here
NFR 3 - Agriculture	681,58	687,79	6,20	0,91%	sub-category chapters
3.B.1.b	91,39	91,43	0,03	0,04%	here
3.B.3	117,12	121,81	4,69	4,00%	here
3.B.4.g i	11,45	11,31	-0,14	-1,19%	here
3.B.4.g iii	3,96	3,99	0,02	0,61%	here
3.B.4.g iv	2,48	2,47	-0,01	-0,50%	here
3.D.a.2.a	273,67	275,21	1,54	0,56%	here
3.D.a.3	22,16	22,23	0,07	0,30%	here
NFR 5 - Waste	0,16	0,16	0,00	0,00%	
NFR 6 - Other		NA			

Changes within the **National Total** reported for **2019 (-11.7 kt | -2 %)** result mainly from several larger revisions in **NFR 3 (-9.6 kt)** together with less significant changes throughout NFRs 1, 2 and 5.

The most significant relative change occurs for **NFR 2.A.3 with plus 68 %**.

Table 2: Changes in emission estimates for 2019

NFR Sector	Submission 2022	Submission 2023	Difference		Reasoning
	[kt]			relative	
NATIONAL TOTAL	537,27	529,78	-7,49	-1,39%	see description and reasoning in: sub-category chapters
NFR 1 - Energy	12,31	13,20	0,89	7,19%	sub-category chapters
1.A.1.a	0,62	0,60	-0,02	-3,18%	here
1.A.1.b	0,541	0,545	0,004	0,80%	here
1.A.1.c	0,0243	0,0246	0,0002	0,96%	here
1.A.2.a	0,095	0,093	-0,002	-1,83%	here
1.A.2.b	0,0063	0,0070	0,001	12,16%	here
1.A.2.e	0,0018	0,0012	-0,0006	-33,75%	here
1.A.2.f	0,0218	0,0215	-0,0003	-1,34%	here
1.A.2.g vii	0,0083	0,0085	0,0002	2,07%	here
1.A.2.g viii	0,365	0,369	0,003	0,95%	here
1.A.3.a i(i)	0,058	0,054	-0,004	-6,63%	here
1.A.3.a ii(i)	0,015	0,014	-0,001	-6,73%	here
1.A.3.b i	7,59	8,36	0,77	10,13%	here
1.A.3.b ii	0,197	0,220	0,023	11,64%	here
1.A.3.b iii	0,743	0,726	-0,017	-2,30%	here
1.A.3.b iv	0,0221	0,0224	0,0003	1,14%	here
1.A.3.c	0,007	0,008	0,000	5,20%	here

	Submission 2022	Submission 2023	Difference		Reasoning
NFR Sector	[kt]		absolute	relative	see description and reasoning in:
NATIONAL TOTAL	537,27	529,78	-7,49	-1,39%	sub-category chapters
NFR 1 - Energy	12,31	13,20	0,89	7,19%	sub-category chapters
1.A.3.d ii	0,0052	0,0052	0,0000	-0,01%	here
1.A.4.a i	0,36	0,50	0,14	37,57%	here
1.A.4.a ii	0,001875	0,001884	0,000009	0,48%	here
1.A.4.b i	1,531	1,524	-0,01	-0,40%	here
1.A.4.b ii	0,00038	0,00030	-0,00008	-21,40%	here
1.A.4.c i	0,052	0,050	-0,003	-5,09%	here
1.A.4.c ii	0,0101	0,0102	0,0001	1,40%	here
1.A.5.a	0,00373	0,00375	0,00001	0,39%	here
1.A.5.b	0,01966	0,01963	-0,00003	-0,16%	here
1.B.1.b	0,00192	0,00193	0,00002	0,89%	here
NFR 2 - IPPU	9,139	9,590	0,45	4,93%	sub-category chapters
2.A.1	1,01	1,11	0,10	9,45%	here
2.A.3	1,10	1,13	0,03	2,76%	here
2.B.7	0,92	1,25	0,32	35,20%	here
2.C.1	0,075598	0,075595	-0,000004	-0,01%	here
NFR 3 - Agriculture	512,27	495,10	-17,18	-3,35%	sub-category chapters
3.B.1.a	59,09	54,85	-4,24	-7,17%	here
3.B.1.b	70,41	49,64	-20,77	-29,49%	here
3.B.3	84,75	78,56	-6,19	-7,30%	here
3.B.4.g i	8,17	6,80	-1,36	-16,70%	here
3.B.4.g ii	8,21	8,27	0,06	0,74%	here
3.B.4.g iii	9,08	9,07	-0,02	-0,17%	here
3.B.4.g iv	1,54	1,53	-0,01	-0,38%	here
3.D.a.1	36,97	35,94	-1,04	-2,80%	here
3.D.a.2.a	158,67	170,65	11,98	7,55%	here
3.D.a.2.b	1,90	1,67	-0,23	-12,25%	here
3.D.a.2.c	50,12	54,33	4,21	8,40%	here
3.D.a.3	12,30	12,68	0,38	3,12%	here
3.l	3,14	3,18	0,04	1,16%	here
NFR 5 - Waste	3,54	3,55	0,01	0,32%	sub-category chapters
5.B.1	1,96	2,03	0,07	3,70%	here
5.B.2	1,59	1,53	-0,06	-3,84%	here
NFR 6 - Other	0,00	8,34	8,34		
6.A	NA	8,34	8,34		