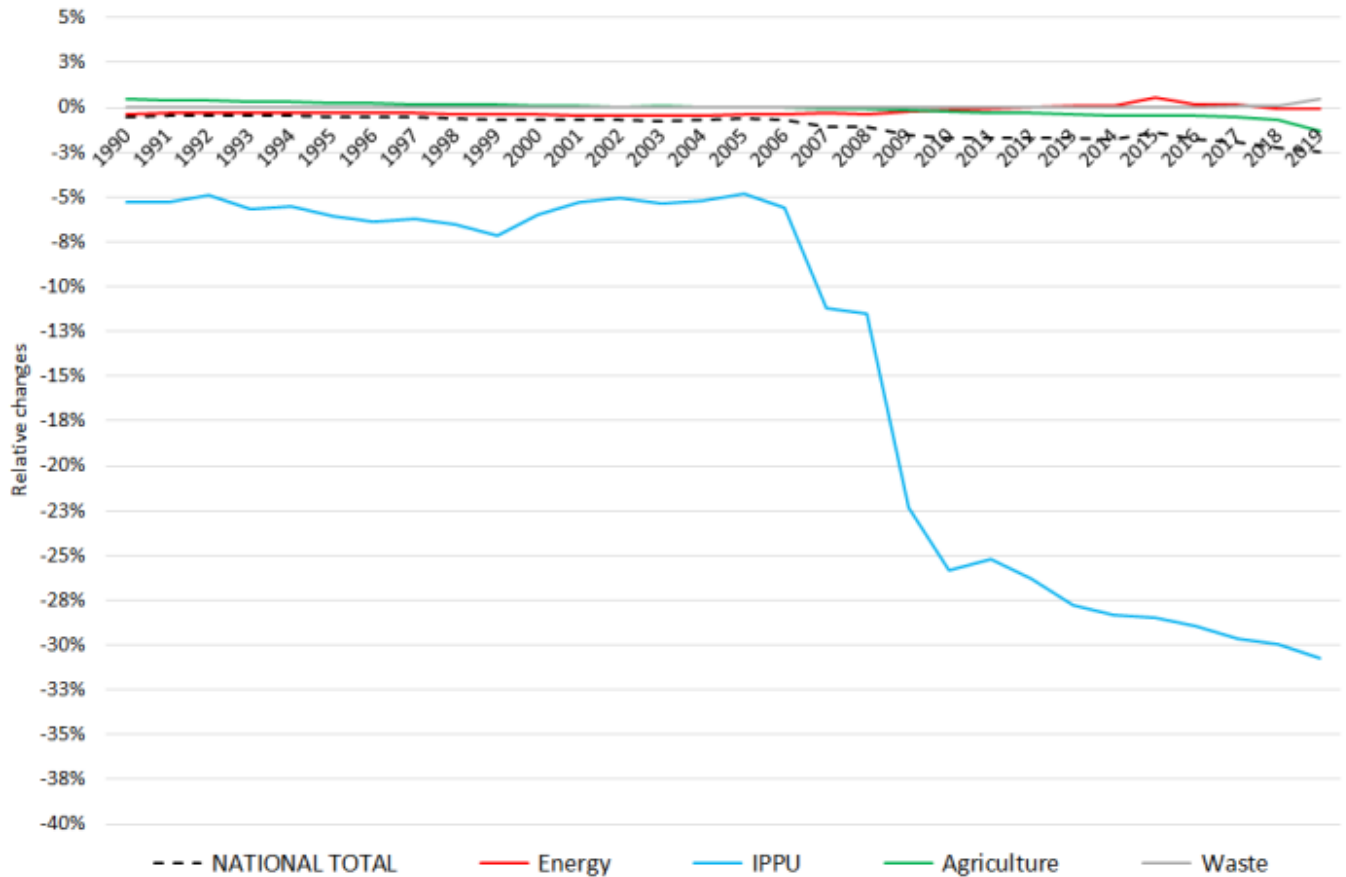
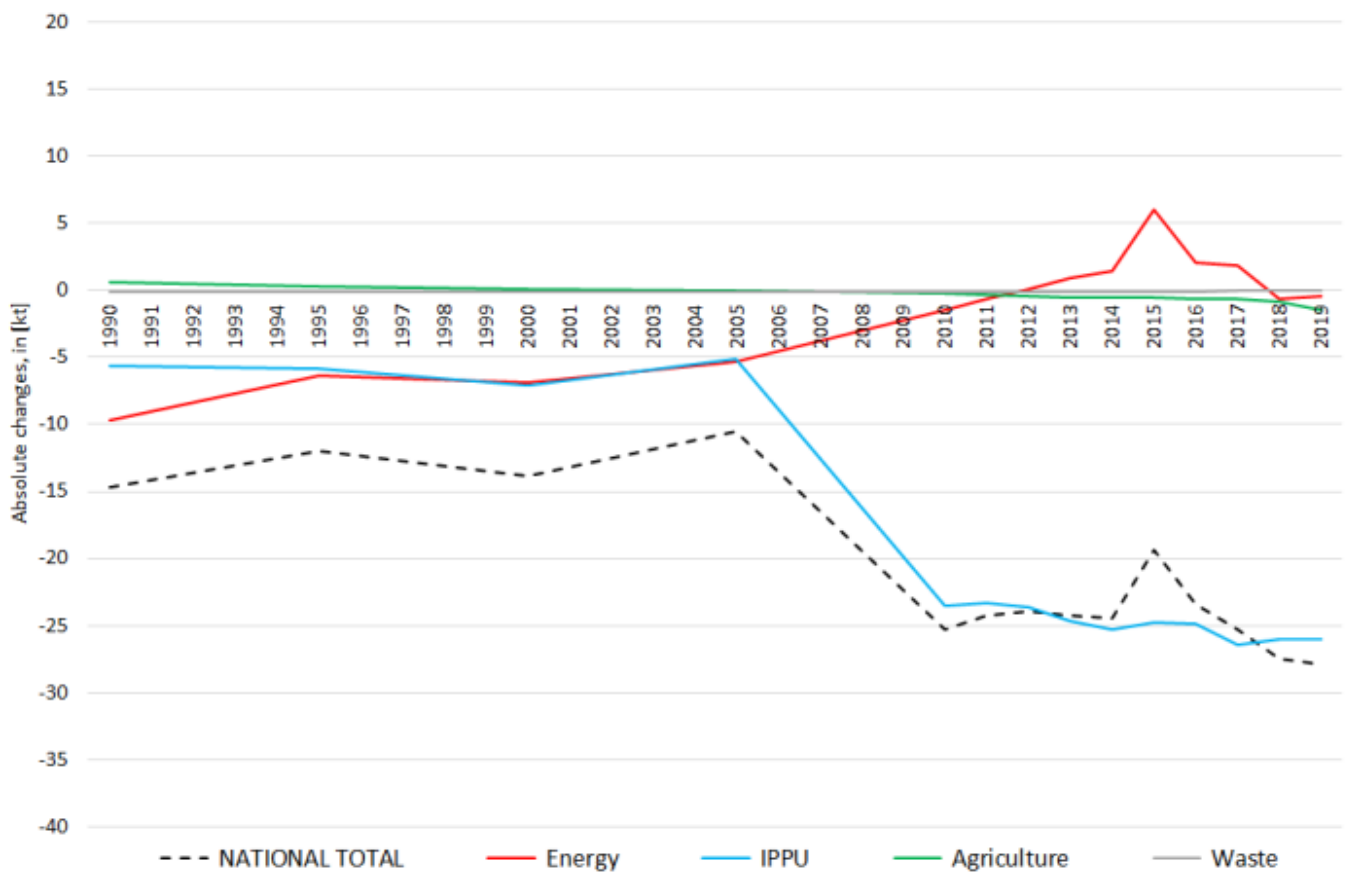


Recalculations - Nitrogen Oxides

Revision of NO_x emissions over time:



Changes within the **National Total** reported for **1990 (+7.95 kt or +0.28 %)** are dominated by changes in NFRs **1.A.3.b i** (+30 kt) and **1.A.3.b iii** (-24 kt) together with less significant revisions throughout NFRs 1, 2 and 3.

The most significant percental change occurs for **NFR 3.D.a.2c with plus 12 %**.

Table 1: Changes of emission estimates 1990

NFR Sector	Submission 2022	Submission 2023	Difference		Reasoning
	[kt]			relative	
NATIONAL TOTAL	2.835,33	2.843,28	7,95	0,28%	see description and reasoning in: sub-category chapters
NFR 1 - Energy	2.592,15	2.599,50	7,35	0,28%	sub-category chapters
1.A.2.g vii	50,23	50,30	0,07	0,13%	here
1.A.3.a i(i)	3,94	3,68	-0,26	-6,58%	here
1.A.3.a ii(i)	2,78	2,60	-0,18	-6,53%	here
1.A.3.b i	765,68	795,98	30,30	3,96%	here
1.A.3.b ii	31,49	32,82	1,33	4,22%	here
1.A.3.b iii	505,99	482,15	-23,84	-4,71%	here
1.A.3.b iv	2,45	2,49	0,03	1,37%	here
1.A.4.a ii	11,60	11,58	-0,01	-0,11%	here
1.A.4.b ii	0,08	0,08	0,00	-0,02%	here
1.A.4.c ii	49,31	49,23	-0,08	-0,17%	here
NFR 2 - IPPU	100,73	100,73	0,00	0,00%	
NFR 3 - Agriculture	141,92	142,52	0,60	0,42%	sub-category chapters
3.B.4.g i	0,014266	0,014255	-0,000012	-0,081%	here
3.D.a.2.a	44,14	44,52	0,38	0,85%	here
3.D.a.2.c	0,002	0,224	0,22	11,68%	here
3.D.a.3	8,40	8,40	0,00	0,02%	here
NFR 5 - Waste	0,53	0,53	0,00	0,00%	
NFR 6 - Other		NA			

The changes within the **National Total** reported for **2020 (-28 kt or -2.46 %)** are dominated by changes in **NFR 2.B.2** (-25.6 kt) together with less significant revisions **throughout NFRs 1 and 3**.

Here, the most significant percental changes occur for NFRs **2.C.3 with plus 104 %** and **2.B.2 with minus 96 %**.

Table 2: Changes of emission estimates 2020

NFR Sector	Submission 2022	Submission 2023	Difference		Reasoning
	[kt]			relative	
NATIONAL TOTAL	979,22	975,65	-3,58	-0,37%	see description and reasoning in: sub-category chapters
NFR 1 - Energy	815,30	809,87	-5,43	-0,67%	sub-category chapters
1.A.1.a	186,93	186,02	-0,91	-0,49%	here
1.A.1.b	13,98	14,42	0,44	3,16%	here
1.A.1.c	12,85	13,10	0,25	1,97%	here
1.A.2.a	3,61	3,57	-0,04	-1,06%	here
1.A.2.b	0,93	0,92	-0,01	-1,04%	here
1.A.2.e	0,202	0,188	-0,014	-6,98%	here
1.A.2.g vii	14,39	14,62	0,23	1,58%	here
1.A.2.g viii	64,41	70,35	5,94	9,23%	here
1.A.3.a i(i)	5,39	5,04	-0,36	-6,63%	here
1.A.3.a ii(i)	1,13	1,05	-0,08	-6,71%	here
1.A.3.b i	211,62	200,13	-11,49	-5,43%	here
1.A.3.b ii	48,72	48,97	0,25	0,51%	here
1.A.3.b iii	92,85	90,66	-2,20	-2,37%	here
1.A.3.b iv	1,55	1,57	0,02	1,32%	here
1.A.3.c	8,13	8,69	0,56	6,84%	here
1.A.3.d ii	21,63	21,62	0,00	-0,01%	here
1.A.3.e i	0,87	0,87	0,00	0,00%	1.A.3.e i - Pipeline Transport]

	Submission 2022	Submission 2023	Difference		Reasoning
NFR Sector	[kt]		absolute	relative	see description and reasoning in:
NATIONAL TOTAL	979,22	975,65	-3,58	-0,37%	sub-category chapters
NFR 1 - Energy	815,30	809,87	-5,43	-0,67%	sub-category chapters
1.A.4.a i	19,51	22,22	2,72	13,93%	here
1.A.4.a ii	7,61	7,63	0,02	0,27%	here
1.A.4.b i	59,57	58,80	-0,76	-1,28%	here
1.A.4.b ii	0,5268	0,4194	-0,11	-20,39%	here
1.A.4.c i	7,08	7,03	-0,05	-0,76%	here
1.A.4.c ii	27,12	27,39	0,27	1,00%	here
1.A.5.a	0,218	0,220	0,002	1,06%	here
1.A.5.b	2,38	2,28	-0,10	-4,05%	here
1.B.1.b	0,59	0,57	-0,02	-3,37%	here
NFR 2 - IPPU	54,47	54,92	0,45	0,82%	sub-category chapters
2.A.1	11,72	12,95	1,23	10,54%	here
2.A.3	10,69	10,49	-0,20	-1,88%	here
2.H.1	2,680	2,093	-0,587	-21,91%	here
NFR 3 - Agriculture	108,75	110,15	1,40	1,29%	sub-category chapters
3.B.1.a	0,506	0,502	-0,004	-0,75%	here
3.B.1.b	0,506	0,505	-0,001	-0,17%	here
3.B.3	0,2581	0,2444	-0,0137	-5,30%	here
3.B.4.g i	0,0186	0,0181	-0,0005	-2,66%	here
3.B.4.g ii	0,0135	0,0137	0,0001	1,06%	here
3.B.4.g iii	0,0094	0,0094	0,000008	0,09%	here
3.B.4.g iv	0,00202	0,00202	0,000002	0,09%	here
3.D.a.1	53,71	52,31	-1,40	-2,61%	here
3.D.a.2.a	36,76	37,16	0,40	1,09%	here
3.D.a.2.b	0,56	0,49	-0,07	-12,25%	here
3.D.a.2.c	11,56	14,00	2,44	21,12%	here
3.D.a.3	4,62	4,67	0,05	1,02%	here
3.l	0,169	0,171	0,002	1,16%	here
NFR 5 - Waste	0,707	0,707	0,000	0,00%	
NFR 6 - Other	NA				