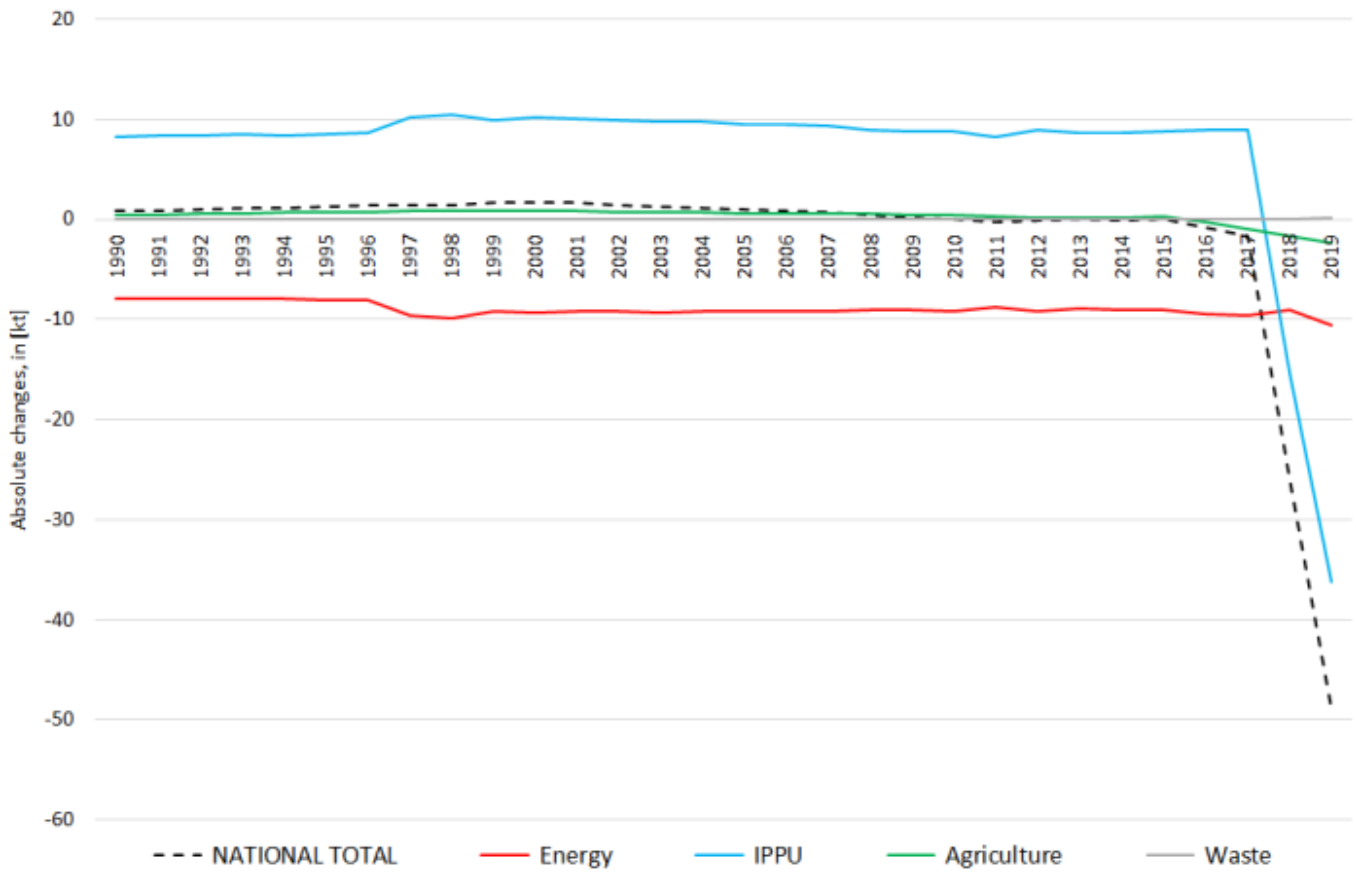
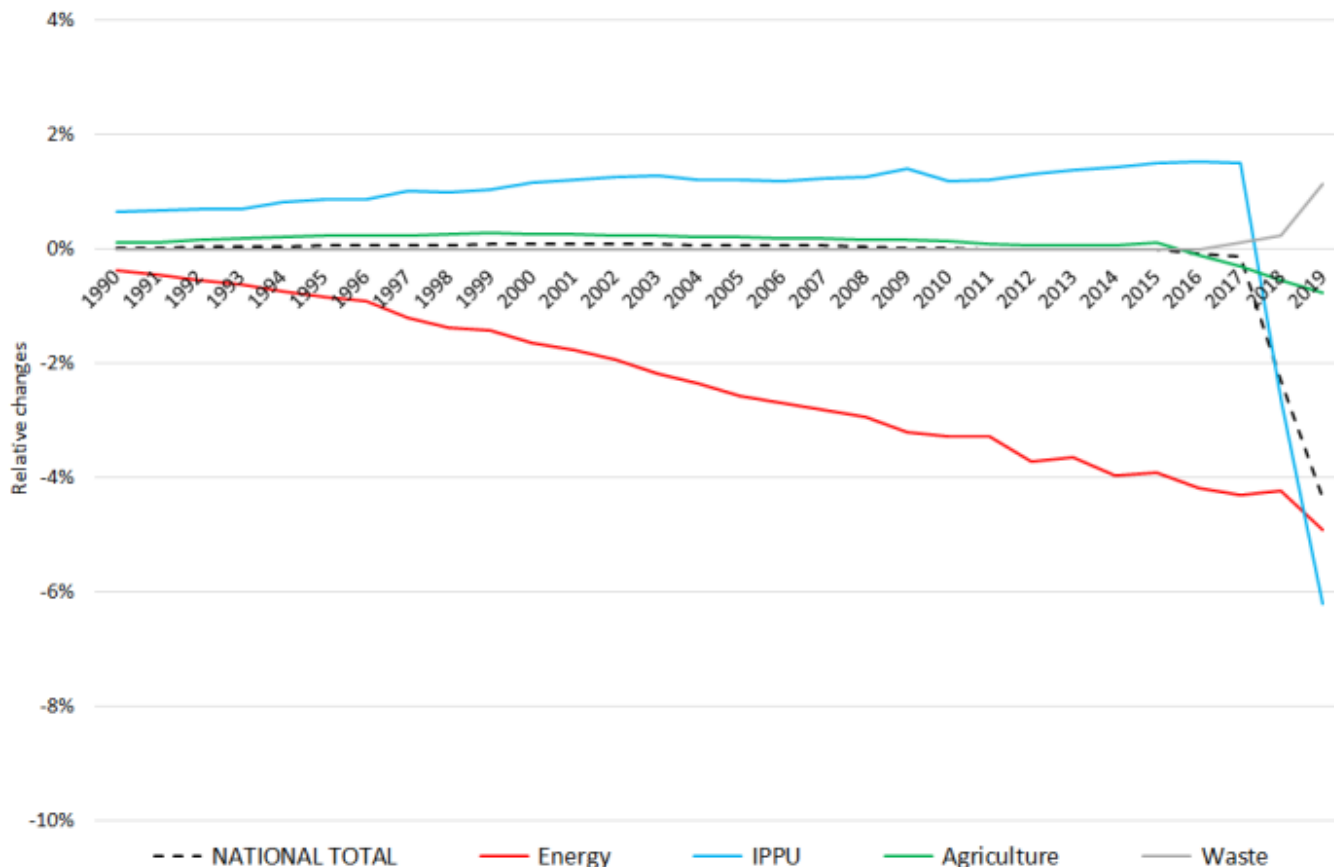


# Recalculations - Non-Methane Volatile Organic Compounds

Revision of NMVOC emissions over time





The insignificant changes within the **National Total reported for 1990 (+0.73 kt | +0.02 %)** are dominated by a re-allocation of **8.09 kt** of NMVOCs from NFR sub-categorie **1.B.2.a iv** to **2.B.10.b**, with the strongest percental change occurring for **1.A.4.c iii** with minus 55 %.

Table 1: Changes in emission estimates for 1990

NFR Sector	Submission 2022	Submission 2023	Difference		Reasoning
	[kt]		absolute	relative	
<b>NATIONAL TOTAL</b>	<b>3.891,58</b>	<b>3.948,88</b>	<b>57,30</b>	<b>1,47%</b>	see description and reasoning in: sub-category chapters
<b>NFR 1 - Energy</b>	<b>2.162,57</b>	<b>2.220,72</b>	<b>58,15</b>	<b>2,69%</b>	sub-category chapters
1.A.2.g vii	9,95	9,97	0,01	0,13%	<a href="#">here</a>
1.A.3.a i(i)	0,80	0,75	-0,05	-6,52%	<a href="#">here</a>
1.A.3.a ii(i)	0,42	0,40	-0,02	-4,17%	<a href="#">here</a>
1.A.3.b i	1.119,06	1.164,74	45,69	4,08%	<a href="#">here</a>
1.A.3.b ii	39,73	41,31	1,58	3,97%	<a href="#">here</a>
1.A.3.b iii	60,12	57,35	-2,77	-4,60%	<a href="#">here</a>
1.A.3.b iv	58,50	59,68	1,18	2,02%	<a href="#">here</a>
1.A.3.b v	201,42	213,08	11,67	5,79%	<a href="#">here</a>
1.A.4.a ii	2,35	2,34	0,00	-0,14%	<a href="#">here</a>
1.A.4.b ii	12,52	12,36	-0,16	-1,25%	<a href="#">here</a>
1.A.4.c ii	32,17	32,22	0,05	0,16%	<a href="#">here</a>
1.B.2.b	7,97	8,94	0,97	12,16%	
<b>NFR 2 - IPPU</b>	<b>1.291,63</b>	<b>1.291,63</b>	<b>0,00</b>	<b>0,00%</b>	
<b>NFR 3 - Agriculture</b>	<b>398,93</b>	<b>398,60</b>	<b>-0,33</b>	<b>-0,08%</b>	sub-category chapters
3.B.1.a	196,61	196,60	-0,01	-0,01%	<a href="#">here</a>
3.B.1.b	154,16	153,85	-0,31	-0,20%	<a href="#">here</a>
<b>NFR 5 - Waste</b>	<b>38,45</b>	<b>37,92</b>	<b>-0,52</b>	<b>-1,36%</b>	sub-category chapters
5.A	18,02	17,49	-0,52	-2,91%	<a href="#">here</a>
<b>NFR 6 - Other</b>	<b>0,00</b>	<b>0,00</b>	<b>0,00</b>	<b>0,00%</b>	

Changes within the **National Total reported for 2019 (-49kt | -4.37%)** result from several more or less significant revisions in **NFR1, 2 3 and 4**.

The strongest percental change occurs for **NFR 1.A.4.c iii with minus 43 %**.

Table 2: Changes in emission estimates for 2019

NFR Sector	Submission 2022	Submission 2023	Difference		Reasoning see description and reasoning in:
	[kt]			relative	
<b>NATIONAL TOTAL</b>	<b>1.035.77</b>	<b>1.028.45</b>	<b>-7.33</b>	<b>-0.71%</b>	<b>sub-category chapters</b>
<b>NFR 1 - Energy</b>	<b>193.94</b>	<b>191.64</b>	<b>-2.30</b>	<b>-1.19%</b>	<b>sub-category chapters</b>
1.A.1.a	6.56	6.52	-0.04	-0.57%	<a href="#">here</a>
1.A.1.b	0.80	0.82	0.02	2.09%	<a href="#">here</a>
1.A.1.c	0.38	0.41	0.03	8.67%	<a href="#">here</a>
1.A.2.a	0.229	0.225	-0.004	-1.55%	<a href="#">here</a>
1.A.2.b	0.07460	0.07464	0.00004	0.05%	<a href="#">here</a>
1.A.2.e	0.023	0.021	-0.002	-7.37%	<a href="#">here</a>
1.A.2.g vii	3.42	4.03	0.62	18.00%	<a href="#">here</a>
1.A.2.g viii	5.40	5.80	0.40	7.43%	<a href="#">here</a>
1.A.3.a i(i)	0.28	0.26	-0.02	-6.62%	<a href="#">here</a>
1.A.3.a ii(i)	0.24	0.23	-0.02	-6.27%	<a href="#">here</a>
1.A.3.b i	40.79	40.03	-0.76	-1.87%	<a href="#">here</a>
1.A.3.b ii	1.39	1.38	-0.01	-0.66%	<a href="#">here</a>
1.A.3.b iii	2.39	2.31	-0.08	-3.38%	<a href="#">here</a>
1.A.3.b iv	14.83	15.18	0.35	2.37%	<a href="#">here</a>
1.A.3.b v	22.79	22.71	-0.08	-0.37%	<a href="#">here</a>
1.A.3.c	0.40	0.45	0.05	12.55%	<a href="#">here</a>
1.A.3.d ii	0.956	0.973	0.017	1.73%	<a href="#">here</a>
1.A.4.a i	3.68	3.86	0.18	4.81%	<a href="#">here</a>
1.A.4.a ii	0.839	0.841	0.002	0.25%	<a href="#">here</a>
1.A.4.b i	33.34	32.86	-0.48	-1.43%	<a href="#">here</a>
1.A.4.b ii	9.612	7.700	-1.91	-19.89%	<a href="#">here</a>
1.A.4.c i	0.816	0.814	-0.002	-0.23%	<a href="#">here</a>
1.A.4.c ii	10.44	12.14	1.70	16.32%	<a href="#">here</a>
1.A.5.a	0.071	0.075	0.004	4.99%	<a href="#">here</a>
1.A.5.b	1.021	1.020	-0.002	-0.17%	<a href="#">here</a>
1.B.1.b	2.78	2.79	0.01	0.24%	<a href="#">here</a>
1.B.2.b	4.78	2.51	-2.27	-47.55%	
<b>NFR 2 - IPPU</b>	<b>532.81</b>	<b>532.82</b>	<b>0.02</b>	<b>0,003%</b>	<b>sub-category chapters</b>
2.A.3	0.58	0.60	0.02	2.94%	<a href="#">here</a>
<b>NFR 3 - Agriculture</b>	<b>298,95</b>	<b>296,07</b>	<b>-2,87</b>	<b>-0,96%</b>	<b>sub-category chapters</b>
3.B.1.a	159,99	158,92	-1,08	-0,67%	<a href="#">here</a>
3.B.1.b	85,42	83,62	-1,80	-2,10%	<a href="#">here</a>
<b>NFR 5 - Waste</b>	<b>10,08</b>	<b>7,91</b>	<b>-2,17</b>	<b>-21,57%</b>	<b>sub-category chapters</b>
5.A	3,567	1,399	-2,168	-60,79%	<a href="#">here</a>
5.D.1	0,14	0,13	-0,01	-4,16%	<a href="#">here</a>
5.D.2	0,0130	0,0127	-0,0003	-2,52%	<a href="#">here</a>
<b>NFR 6 - Other</b>	<b>0,00</b>	<b>0,00</b>	<b>0,00</b>		