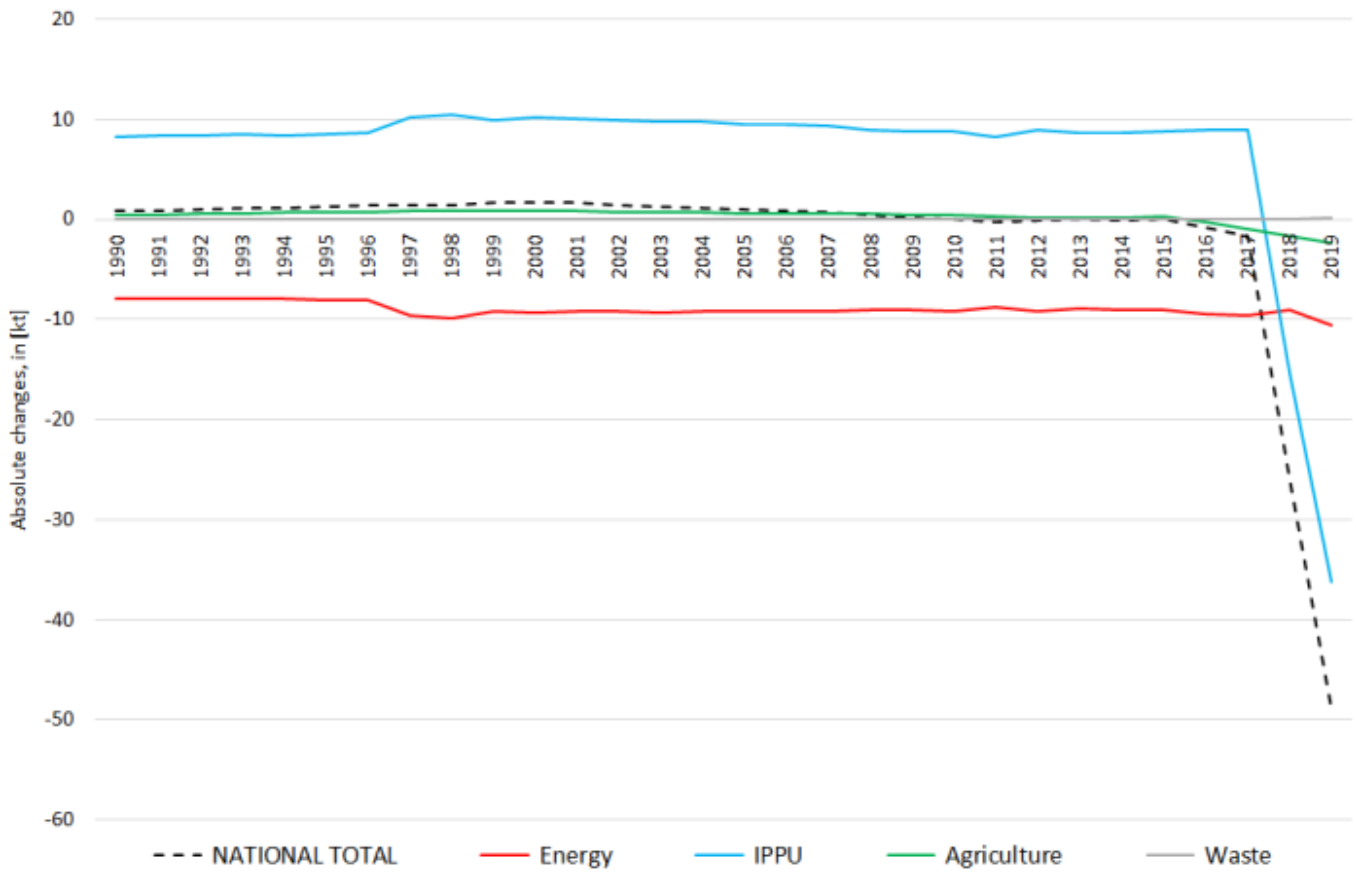
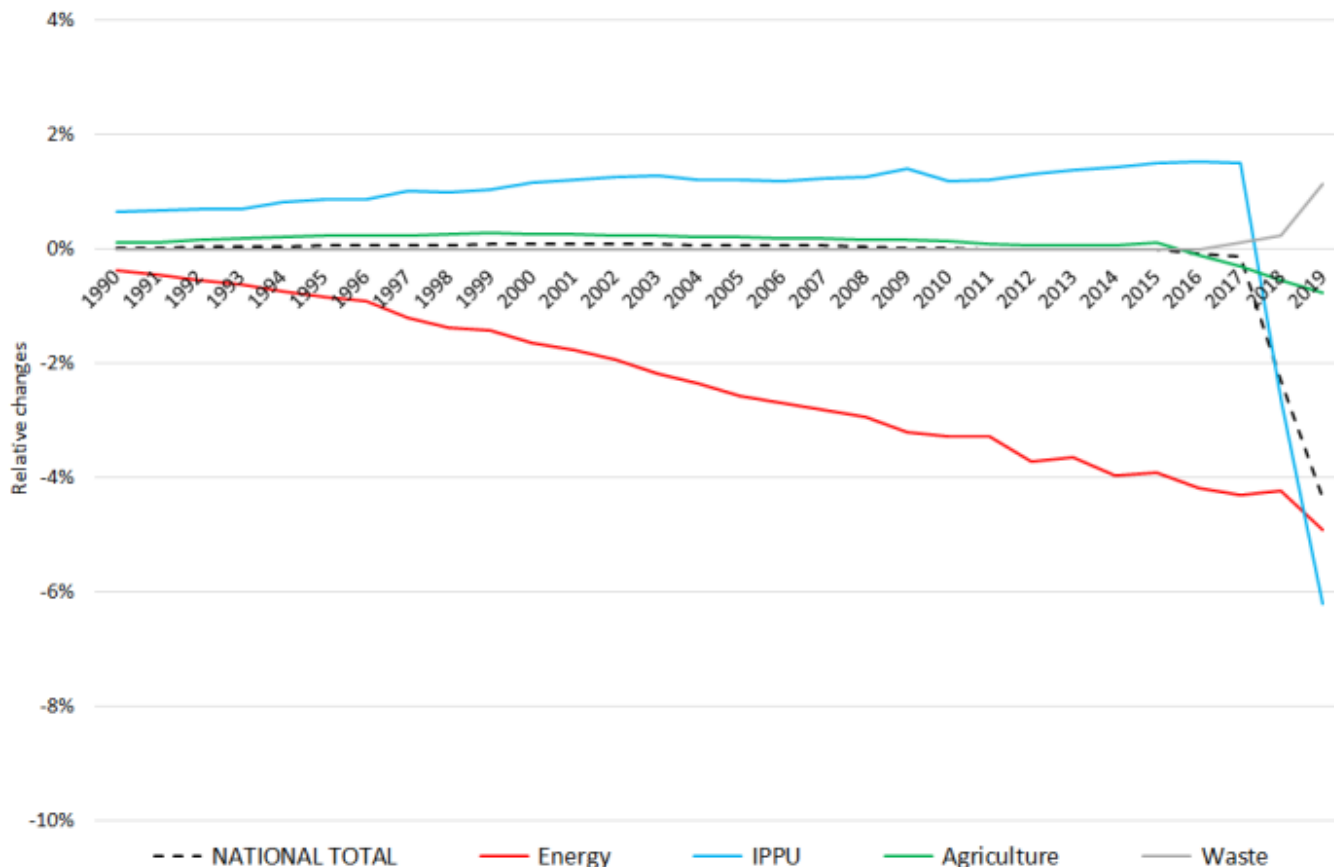


# Recalculations - Non-Methane Volatile Organic Compounds

Revision of NMVOC emissions over time





The changes within the **National Total reported for 1990 (+57 kt or +1.47 %)** are dominated by NFR sub-categories **1.A.3.b i (+46 kt)** and **1.A.3.b v (+12 kt)**, with the strongest percental change occurring for **1.B.2.b** with plus 12 %.

Table 1: Changes in emission estimates for 1990

| NFR Sector                 | Submission 2022 | Submission 2023 | Difference   |               | Reasoning  |
|----------------------------|-----------------|-----------------|--------------|---------------|--|
|                            | [kt]            |                 | absolute     | relative      |  |
| <b>NATIONAL TOTAL</b>      | <b>3.891,58</b> | <b>3.948,88</b> | <b>57,30</b> | <b>1,47%</b>  | <b>see description and reasoning in: sub-category chapters</b> |
| <b>NFR 1 - Energy</b>      | <b>2.162,57</b> | <b>2.220,72</b> | <b>58,15</b> | <b>2,69%</b>  | <b>sub-category chapters</b>                                   |
| 1.A.2.g vii                | 9,95            | 9,97            | 0,01         | 0,13%         | <a href="#">here</a>   |
| 1.A.3.a i(i)               | 0,80            | 0,75            | -0,05        | -6,52%        | <a href="#">here</a>   |
| 1.A.3.a ii(i)              | 0,42            | 0,40            | -0,02        | -4,17%        | <a href="#">here</a>   |
| 1.A.3.b i                  | 1.119,06        | 1.164,74        | 45,69        | 4,08%         | <a href="#">here</a>   |
| 1.A.3.b ii                 | 39,73           | 41,31           | 1,58         | 3,97%         | <a href="#">here</a>   |
| 1.A.3.b iii                | 60,12           | 57,35           | -2,77        | -4,60%        | <a href="#">here</a>   |
| 1.A.3.b iv                 | 58,50           | 59,68           | 1,18         | 2,02%         | <a href="#">here</a>   |
| 1.A.3.b v                  | 201,42          | 213,08          | 11,67        | 5,79%         | <a href="#">here</a>   |
| 1.A.4.a ii                 | 2,35            | 2,34            | 0,00         | -0,14%        | <a href="#">here</a>   |
| 1.A.4.b ii                 | 12,52           | 12,36           | -0,16        | -1,25%        | <a href="#">here</a>   |
| 1.A.4.c ii                 | 32,17           | 32,22           | 0,05         | 0,16%         | <a href="#">here</a>   |
| 1.B.2.b                    | 7,97            | 8,94            | 0,97         | 12,16%        |  |
| <b>NFR 2 - IPPU</b>        | <b>1.291,63</b> | <b>1.291,63</b> | <b>0,00</b>  | <b>0,00%</b>  |  |
| <b>NFR 3 - Agriculture</b> | <b>398,93</b>   | <b>398,60</b>   | <b>-0,33</b> | <b>-0,08%</b> | <b>sub-category chapters</b>                                   |
| 3.B.1.a                    | 196,61          | 196,60          | -0,01        | -0,01%        | <a href="#">here</a>   |
| 3.B.1.b                    | 154,16          | 153,85          | -0,31        | -0,20%        | <a href="#">here</a>   |
| <b>NFR 5 - Waste</b>       | <b>38,45</b>    | <b>37,92</b>    | <b>-0,52</b> | <b>-1,36%</b> | <b>sub-category chapters</b>                                   |
| 5.A                        | 18,02           | 17,49           | -0,52        | -2,91%        | <a href="#">here</a>   |
| <b>NFR 6 - Other</b>       |                 | <b>NA</b>       |              |               |  |

Changes within the **National Total reported for 2019 (-49kt | -4.37%)** result from several more or less significant revisions in **NFR1, 2 3 and 4**.

The strongest percental change occurs for **NFR 1.A.4.c iii with minus 43 %**.

Table 2: Changes in emission estimates for 2019

| NFR Sector                 | Submission 2022 | Submission 2023 | Difference   |                | Reasoning<br>see description and reasoning in: |
|----------------------------|-----------------|-----------------|--------------|----------------|--|
|                            | [kt]            |                 |              | relative       |  |
| <b>NATIONAL TOTAL</b>      | <b>1.035.77</b> | <b>1.028.45</b> | <b>-7.33</b> | <b>-0.71%</b>  | <b>sub-category chapters</b>                   |
| <b>NFR 1 - Energy</b>      | <b>193.94</b>   | <b>191.64</b>   | <b>-2.30</b> | <b>-1.19%</b>  | <b>sub-category chapters</b>                   |
| 1.A.1.a                    | 6.56            | 6.52            | -0.04        | -0.57%         | <a href="#">here</a>                           |
| 1.A.1.b                    | 0.80            | 0.82            | 0.02         | 2.09%          | <a href="#">here</a>                           |
| 1.A.1.c                    | 0.38            | 0.41            | 0.03         | 8.67%          | <a href="#">here</a>                           |
| 1.A.2.a                    | 0.229           | 0.225           | -0.004       | -1.55%         | <a href="#">here</a>                           |
| 1.A.2.b                    | 0.07460         | 0.07464         | 0.00004      | 0.05%          | <a href="#">here</a>                           |
| 1.A.2.e                    | 0.023           | 0.021           | -0.002       | -7.37%         | <a href="#">here</a>                           |
| 1.A.2.g vii                | 3.42            | 4.03            | 0.62         | 18.00%         | <a href="#">here</a>                           |
| 1.A.2.g viii               | 5.40            | 5.80            | 0.40         | 7.43%          | <a href="#">here</a>                           |
| 1.A.3.a i(i)               | 0.28            | 0.26            | -0.02        | -6.62%         | <a href="#">here</a>                           |
| 1.A.3.a ii(i)              | 0.24            | 0.23            | -0.02        | -6.27%         | <a href="#">here</a>                           |
| 1.A.3.b i                  | 40.79           | 40.03           | -0.76        | -1.87%         | <a href="#">here</a>                           |
| 1.A.3.b ii                 | 1.39            | 1.38            | -0.01        | -0.66%         | <a href="#">here</a>                           |
| 1.A.3.b iii                | 2.39            | 2.31            | -0.08        | -3.38%         | <a href="#">here</a>                           |
| 1.A.3.b iv                 | 14.83           | 15.18           | 0.35         | 2.37%          | <a href="#">here</a>                           |
| 1.A.3.b v                  | 22.79           | 22.71           | -0.08        | -0.37%         | <a href="#">here</a>                           |
| 1.A.3.c                    | 0.40            | 0.45            | 0.05         | 12.55%         | <a href="#">here</a>                           |
| 1.A.3.d ii                 | 0.956           | 0.973           | 0.017        | 1.73%          | <a href="#">here</a>                           |
| 1.A.4.a i                  | 3.68            | 3.86            | 0.18         | 4.81%          | <a href="#">here</a>                           |
| 1.A.4.a ii                 | 0.839           | 0.841           | 0.002        | 0.25%          | <a href="#">here</a>                           |
| 1.A.4.b i                  | 33.34           | 32.86           | -0.48        | -1.43%         | <a href="#">here</a>                           |
| 1.A.4.b ii                 | 9.612           | 7.700           | -1.91        | -19.89%        | <a href="#">here</a>                           |
| 1.A.4.c i                  | 0.816           | 0.814           | -0.002       | -0.23%         | <a href="#">here</a>                           |
| 1.A.4.c ii                 | 10.44           | 12.14           | 1.70         | 16.32%         | <a href="#">here</a>                           |
| 1.A.5.a                    | 0.071           | 0.075           | 0.004        | 4.99%          | <a href="#">here</a>                           |
| 1.A.5.b                    | 1.021           | 1.020           | -0.002       | -0.17%         | <a href="#">here</a>                           |
| 1.B.1.b                    | 2.78            | 2.79            | 0.01         | 0.24%          | <a href="#">here</a>                           |
| 1.B.2.b                    | 4.78            | 2.51            | -2.27        | -47.55%        |  |
| <b>NFR 2 - IPPU</b>        | <b>532.81</b>   | <b>532.82</b>   | <b>0.02</b>  | <b>0,003%</b>  | <b>sub-category chapters</b>                   |
| 2.A.3                      | 0.58            | 0.60            | 0.02         | 2.94%          | <a href="#">here</a>                           |
| <b>NFR 3 - Agriculture</b> | <b>298,95</b>   | <b>296,07</b>   | <b>-2,87</b> | <b>-0,96%</b>  | <b>sub-category chapters</b>                   |
| 3.B.1.a                    | 159,99          | 158,92          | -1,08        | -0,67%         | <a href="#">here</a>                           |
| 3.B.1.b                    | 85,42           | 83,62           | -1,80        | -2,10%         | <a href="#">here</a>                           |
| <b>NFR 5 - Waste</b>       | <b>10,08</b>    | <b>7,91</b>     | <b>-2,17</b> | <b>-21,57%</b> | <b>sub-category chapters</b>                   |
| 5.A                        | 3,567           | 1,399           | -2,168       | -60,79%        | <a href="#">here</a>                           |
| 5.D.1                      | 0,14            | 0,13            | -0,01        | -4,16%         | <a href="#">here</a>                           |
| 5.D.2                      | 0,0130          | 0,0127          | -0,0003      | -2,52%         | <a href="#">here</a>                           |
| <b>NFR 6 - Other</b>       | <b>0,00</b>     | <b>0,00</b>     | <b>0,00</b>  |                |  |