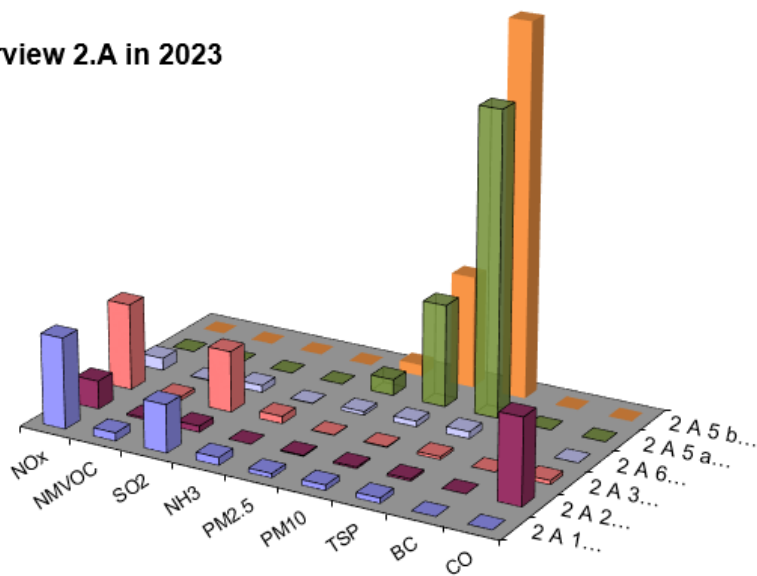


# 2.A - Mineral Industry (OVERVIEW)

<b>2.A - Mineral Industry</b>
<a href="#">2.A.1 Cement Production</a>
<a href="#">2.A.2 Lime Production</a>
<a href="#">2.A.3 Glass Production</a>
<a href="#">2.A.5.a Quarrying and Mining of Minerals other than Coal</a>
<a href="#">2.A.5.b Construction and Demolition</a>
<a href="#">2.A.5.c Storage, Handling and Transport of Mineral Products</a>
<a href="#">2.A.6 Other Mineral Products: Ceramics</a>

The Mineral Industry comprises six different sub-categories partly divergent to reporting format of Greenhouse Gases (CRF). The main categories are the Cement Production (2.A.1), Lime Production (2.A.2), Glass Production (2.A.3). But further mineral industries are important regarding other specific emissions, highlighted here: Mining other than coal (2.A.5.a), Construction (2.A.5.b) and Ceramics Production (2.A.6).

## comparative Overview 2.A in 2023

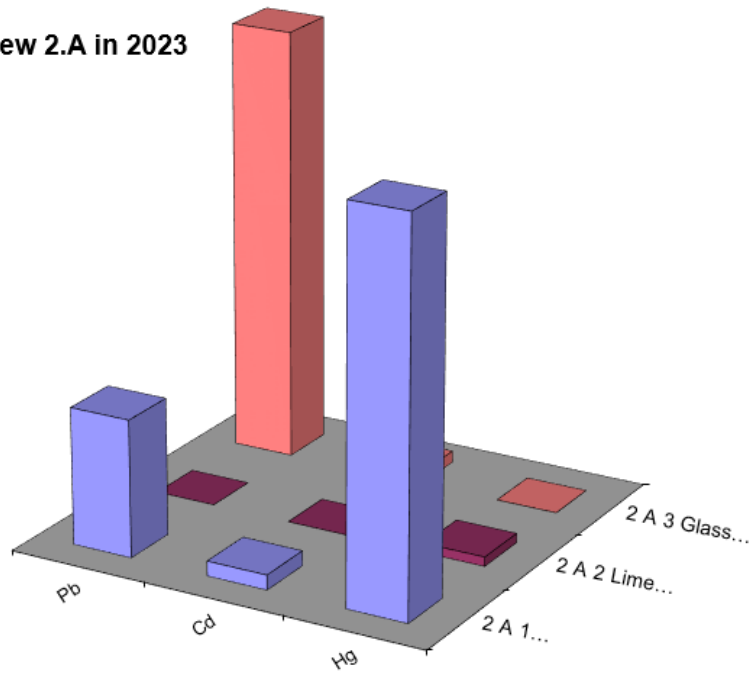


all values in Gg

	NOx	NMVOC	SO2	NH3	PM2.5	PM10	TSP	BC	CO
2 A 1 Cement Production	10,4	0,9	5,5	0,9	0,5	0,6	0,6	0,0	0,0
2 A 2 Lime Production	3,2	0,2	0,7	0,0	0,1	0,2	0,2	0,0	9,9
2 A 3 Glass Production	9,9	0,4	7,0	0,8	0,0	0,1	0,3	0,0	0,5
2 A 6 Ceramic Production	1,4	0,1	0,8	0,0	0,4	0,6	0,8	0,0	0,0
2 A 5 a Mining	0,0	0,0	0,0	0,0	1,8	11,7	34,9	0,0	0,0
2 A 5 b Construction	0,0	0,0	0,0	0,0	1,3	12,8	42,8	0,0	0,0

## Emissions of air pollutants

**comparative Overview 2.A in 2023**



**all values in Mg**

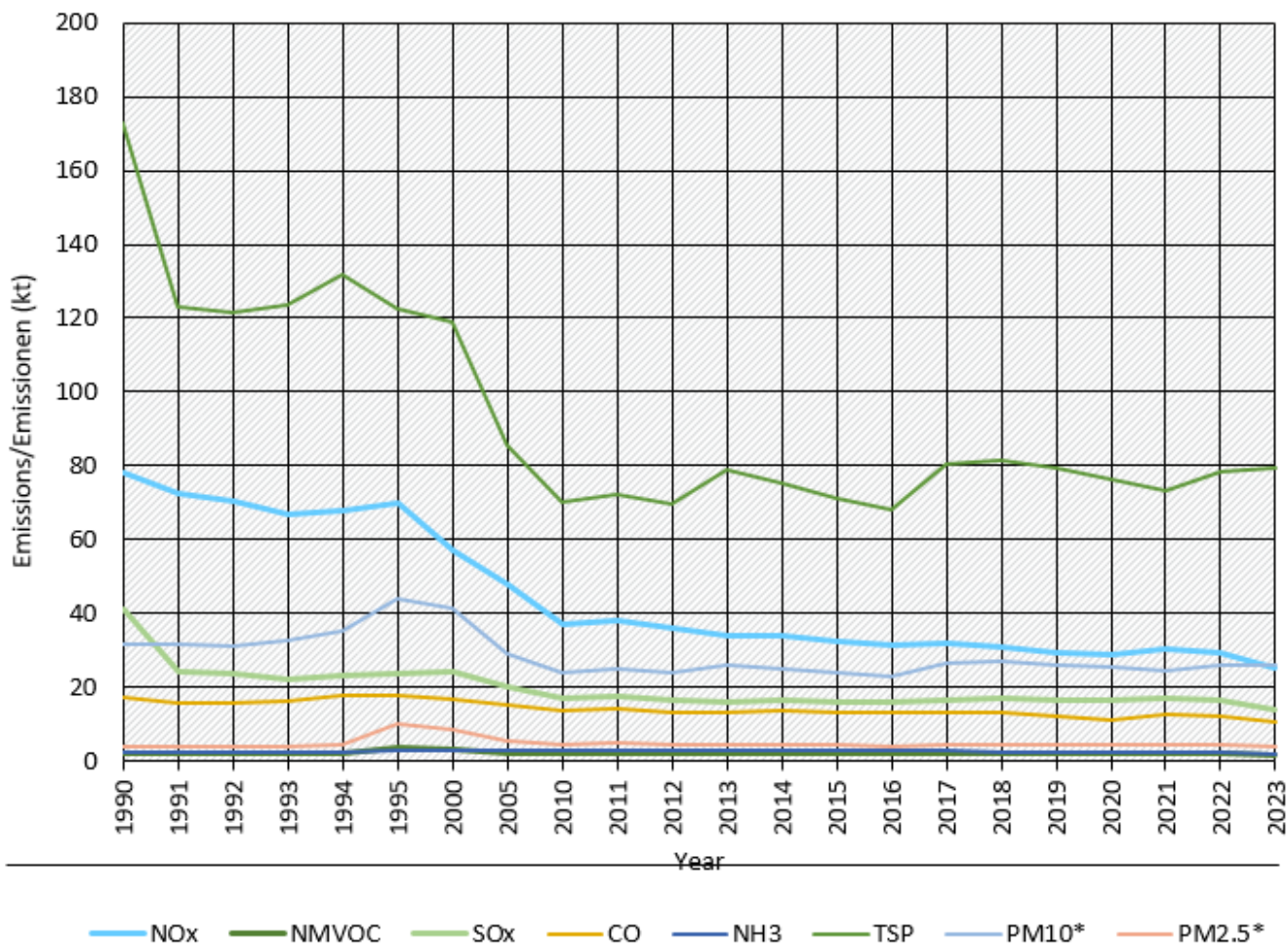
	Pb	Cd	Hg
2 A 1 Cement Production	0,19	0,02	0,53
2 A 2 Lime Production	0,00	0,00	0,01
2 A 3 Glass Production	0,59	0,02	0,00

**Emissions of heavy metals**

**Discussion of emission Trends**

## Trends of Emissions in Germany of mineral industry

Emissions by pollutant / Emissionen nach Schadstoff



\* Base Year for PM = 1995 / Basisjahr für Feinstäube (PM) ist 1995

Quelle: German Environment Agency, National inventory for the German reporting on atmospheric emissions since 1990, (03/2025)

### Emission trends in NFR 2.A

The steep reduction especially for TSP and SO<sub>2</sub> at the beginning of the 1990s was due especially to closures in the eastern German industrial sector. The last statistic of the GDR is the source for emissions data of year 1990 for eastern Germany in cases of TSP and SO<sub>2</sub>, in principle absolut amounts of emissions not old emission factors within a calculation. These unusual emissions are allocated to [2.A.6 Other Mineral Products](#).