

# NFR 6 - Other Sources

Within NFR 6 - Other Sources, activities and resulting emissions are taken into account that cannot be related to any of the other NFR categories.

For the time being, the only emission source reported within NFR 6 is human sweating and breathing:

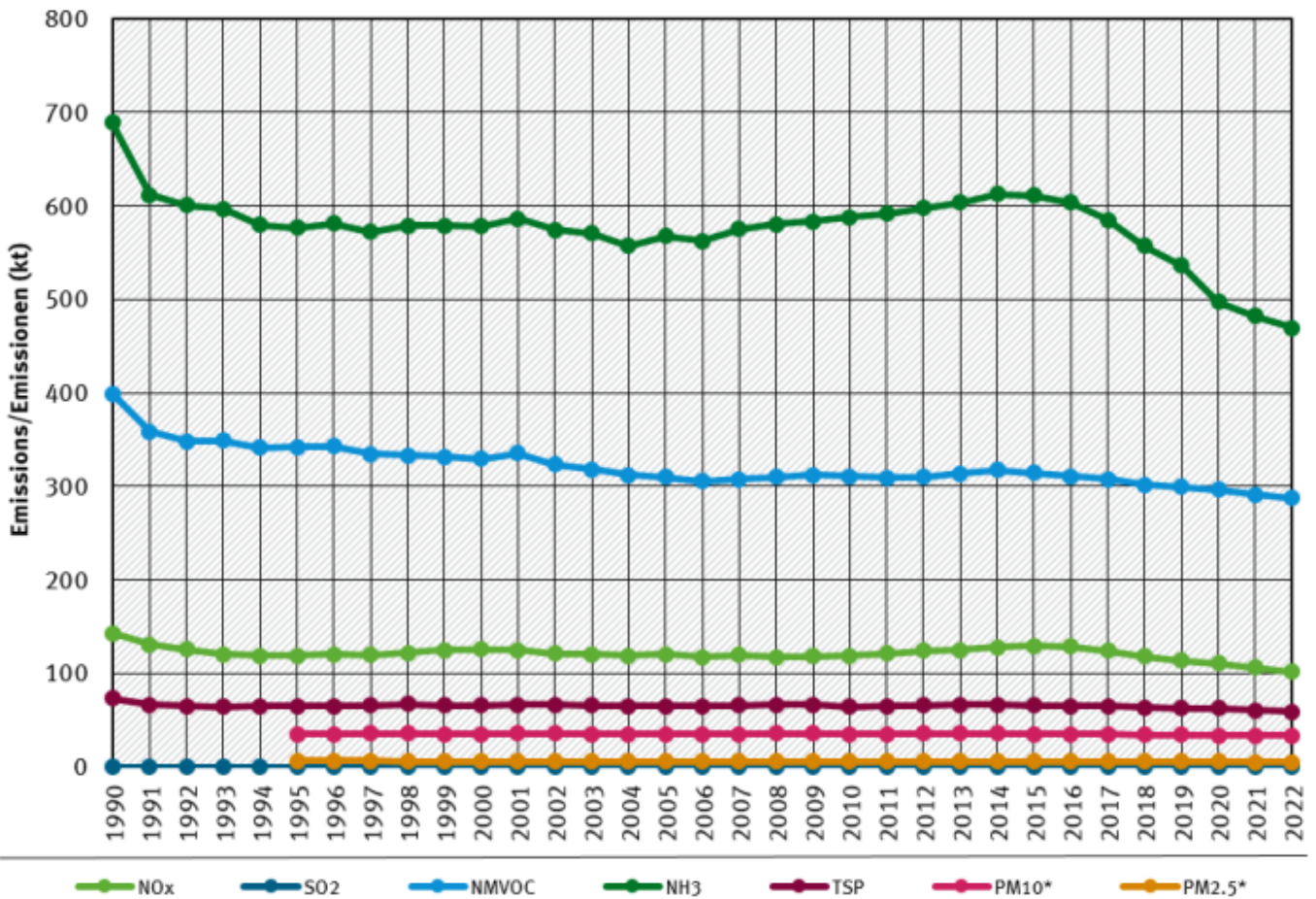
NFR code	NFR name
6.A	<a href="#">6.A - Emissions from human sweating and breathing</a>

## Visual overview

Emission trends for main pollutants in *NFR 6 - Other Sources*:

### Agriculture/Landwirtschaft (NFR 3)

Emissions by pollutant / Emissionen nach Schadstoff

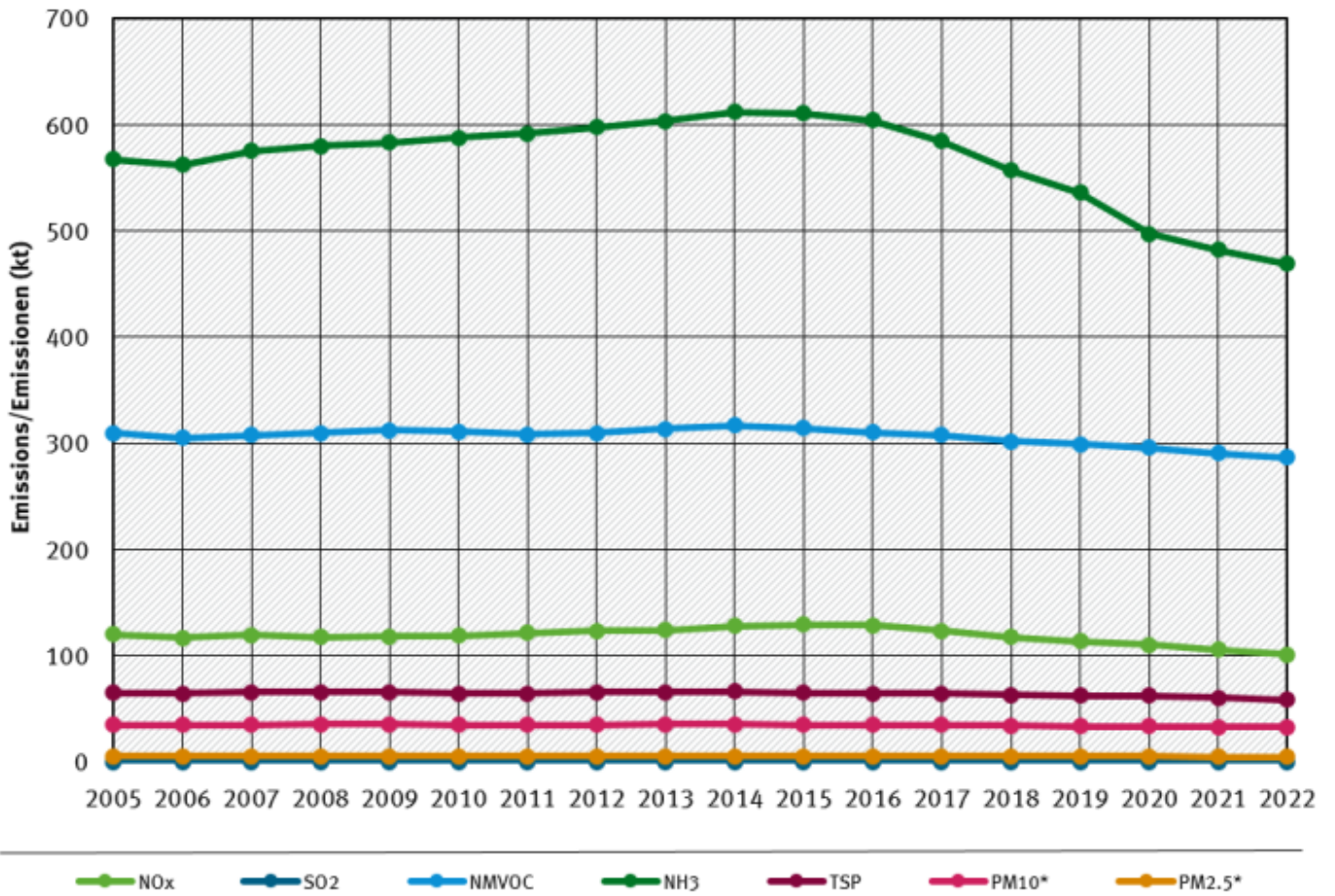


\* Base Year for PM = 1995 / Basisjahr für Feinstäube (PM) ist 1995

Quelle: German Emission Inventory (05.04.2024)

### Agriculture/Landwirtschaft (NFR 3)

Emissions by pollutant / Emissionen nach Schadstoff



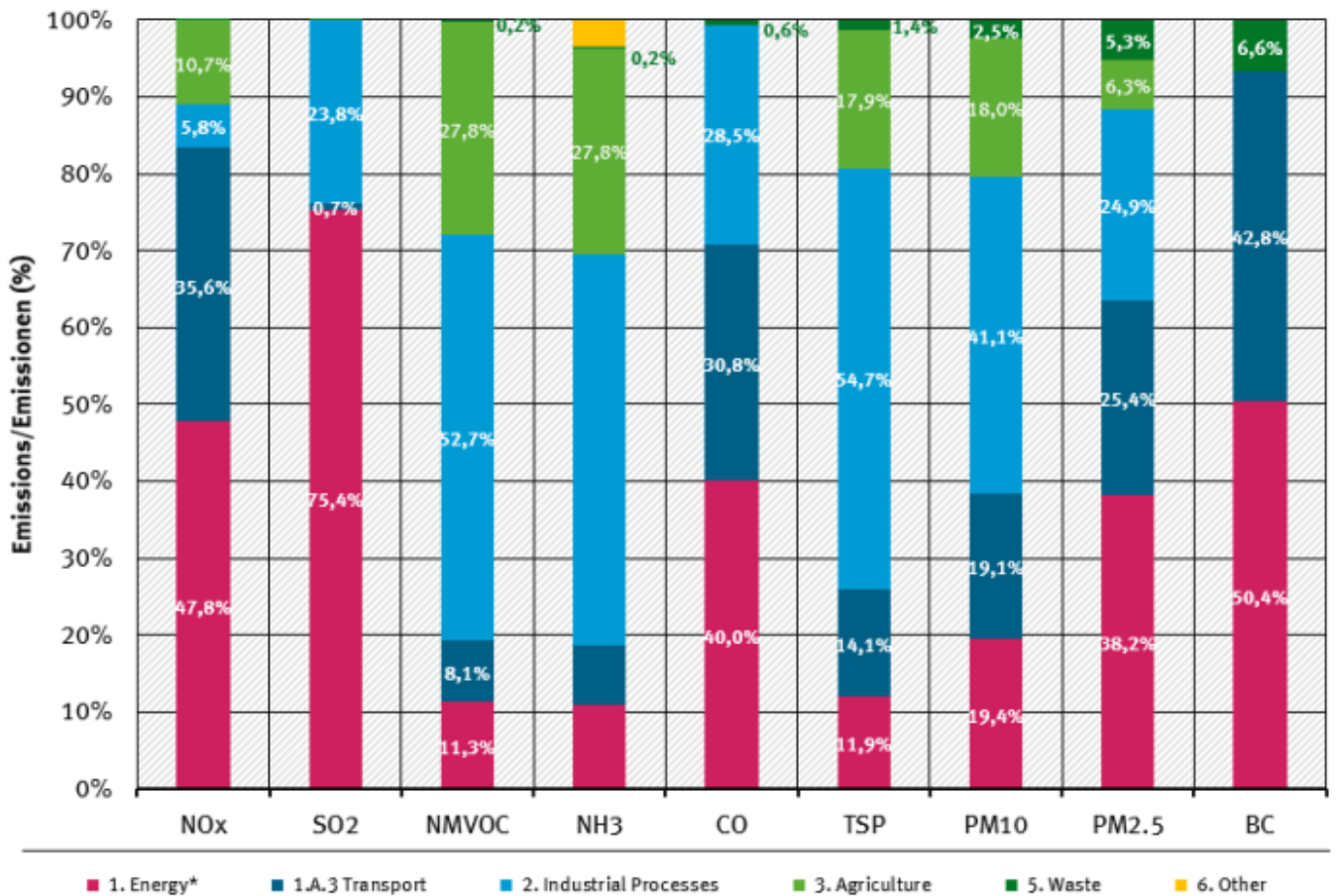
\* Base Year for PM = 1995 / Basisjahr für Feinstäube (PM) ist 1995

Quelle: German Emission Inventory (05.04.2024)

[Contribution of NFRs 1 to 6 to the National Totals, for 2021](#)

### Contribution of NFR categories to the emissions

percentages per air pollutant, 2022



\* w/o Transport / ohne Verkehr (1.A.3)

Quelle: German Emission Inventory (05.04.2024)