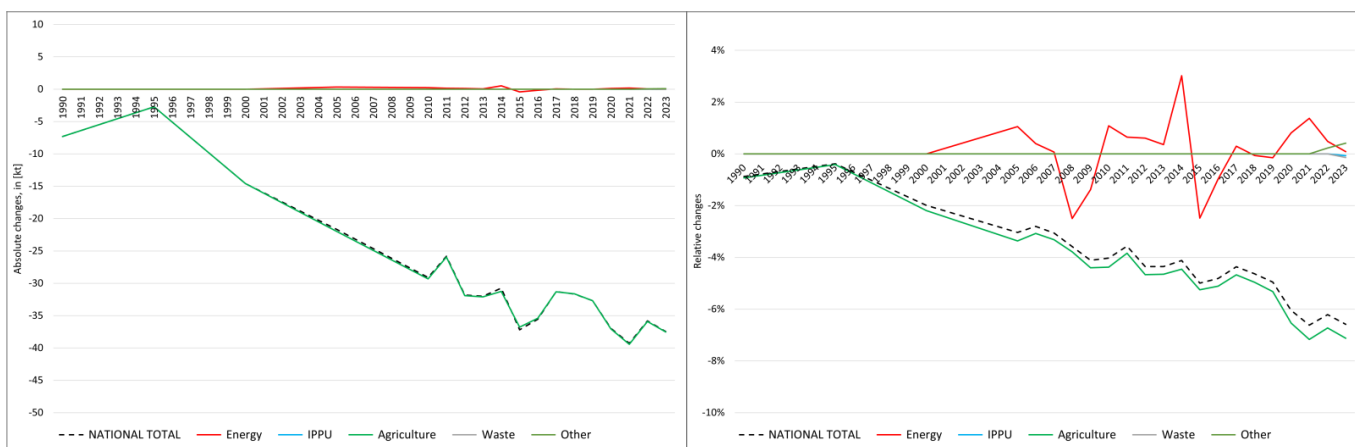


pollutant-specific data:	NOx	NM VOC	SOx	NH3	PM2.5	PM10	TSP	BC	CO	Pb	Cd	Hg	As	Cr	Cu	Ni	Se	Zn	PCDD/F	B[a]P	B[b]F	B[k]F	I[x]P	PAH1-4	HCb	PCB

Recalculations - Ammonia



The small changes within the **National Total** reported for **1990 (-7.32 kt or -0.88 %)** are dominated by revisions in sub-categories of **NFR 3 (-7.32 kt)** together with less significant changes throughout NFRs 1 and 3.

The most significant percental change occurs for **NFR 3.D.a.1 with minus 5.88 %**.

Table 1: Changes in emission estimates for 1990

NFR Sector	Submission 2025	Submission 2026	Difference		Reasoning
			[kt]	relative	
NATIONAL TOTAL	834.48	827.15	-7.32	-0.88%	see description and reasoning in: sub-category chapters
NFR 1 - Energy	15.89	15.89	0.00	0.00%	sub-category chapters
1.A.2.g vii	0.005513	0.005514	0.000001	0.01%	here
1.A.4.a ii	0.0016202	0.0016199	-0.0000003	-0.02%	here
1.A.4.c ii	0.0115413	0.0115411	-0.0000001	-0.001%	here
NFR 2 - IPPU	14.68	14.68	0.00	0.00%	
NFR 3 - Agriculture	789.32	782.00	-7.32	-0.93%	sub-category chapters
3.B.1.a	60.08	58.81	-1.27	-2.11%	here
3.B.3	120.20	118.02	-2.18	-1.82%	here
3.D.a.1	129.55	121.93	-7.61	-5.88%	here
3.D.a.2.a	320.57	324.37	3.79	1.18%	here
3.D.a.2.c	1.5789	1.5785	-0.0004	-0.02%	here
3.D.a.3	24.58	24.50	-0.08	-0.32%	here
3.D.a.4	8.70	8.73	0.03	0.34%	here
NFR 5 - Waste	0.34	0.34	0.00	0.00%	
NFR 6 - Other	14.25	14.25	0.00	0.00%	

The strong changes within the **National Total** reported for **2023 (-37.46 kt or -6.58 %)** result mainly from revisions throughout **NFR 3 (-37.53 kt)** together with less significant changes throughout NFRs 1, 2, and 5.

The most significant percental changes occur for NFR sub-categories **1.A.2.g vii with plus 30.2 %** and **3.D.a.1 with minus 28.7 %**.

Table 2: Changes in emission estimates for 2023

	Submission 2025	Submission 2026	Difference		Reasoning
NFR Sector	[kt]		relative	see description and reasoning in:	
NATIONAL TOTAL	569,00	531,54	-37,46	-6,58%	sub-category chapters
NFR 1 - Energy	12,70	12,71	0,01	0,08%	sub-category chapters
1.A.1.a	0,5772	0,5771	-0,0001	-0,02%	here
1.A.1.b	0,589	0,577	-0,01	-1,98%	here
1.A.1.c	0,022	0,024	0,002	6,75%	here
1.A.2.a	0,1011	0,1008	-0,0003	-0,31%	here
1.A.2.b	0,0072	0,0067	-0,0005	-7,54%	here
1.A.2.e	0,0024	0,0019	-0,0005	-21,14%	here
1.A.2.f	0,0201	0,0202	0,0001	0,36%	here
1.A.2.g vii	0,0043	0,0056	0,0013	30,20%	here
1.A.2.g viii	0,352	0,367	0,015	4,23%	here
1.A.3.b i	8,344	8,333	-0,01	-0,13%	here
1.A.3.b ii	0,288	0,285	-0,002	-0,78%	here
1.A.3.b iii	0,672	0,663	-0,01	-1,30%	here
1.A.3.b iv	0,0192	0,0190	-0,0002	-0,84%	here
1.A.3.c	0,007104	0,007106	0,000002	0,02%	here
1.A.3.d ii	0,0049	0,0048	0,00	-2,20%	here
1.A.4.a i	0,20	0,19	-0,01	-5,41%	here
1.A.4.a ii	0,0015	0,0018	0,0003	18,06%	here
1.A.4.b i	1,27	1,31	0,03	2,62%	here
1.A.4.b ii	0,000322	0,000306	-0,000015	-4,81%	here
1.A.4.c i	0,052	0,057	0,01	9,83%	here
1.A.4.c ii	0,014	0,012	-0,002	-12,37%	here
1.A.5.a	0,00679	0,00682	0,00002	0,35%	here
1.A.5.b	0,023	0,025	0,002	7,94%	here
NFR 2 - IPPU	7,389	7,384	-0,005	-0,07%	sub-category chapters
2.A.3	0,836	0,831	-0,005	-0,60%	here
2.G	0,5299	0,5300	0,0001	0,02%	here
NFR 3 - Agriculture	526,95	489,42	-37,53	-7,12%	sub-category chapters
3.B.1.a	47,56	39,50	-8,05	-16,93%	here
3.B.1.b	43,75	43,65	-0,10	-0,22%	here
3.B.3	62,12	59,50	-2,62	-4,21%	here
3.B.4.e	18,29	21,38	3,09	16,89%	here
3.B.4.g i	6,77	6,74	-0,03	-0,44%	here
3.B.4.g ii	7,67	7,57	-0,11	-1,41%	here
3.B.4.g iii	6,86	6,85	-0,01	-0,17%	here
3.B.4.g iv	1,63	1,70	0,07	4,50%	here
3.D.a.1	61,79	44,08	-17,71	-28,67%	here
3.D.a.2.a	185,00	174,47	-10,52	-5,69%	here
3.D.a.2.b	1,61	1,39	-0,22	-13,84%	here
3.D.a.2.c	58,35	57,13	-1,23	-2,10%	here
3.D.a.3	15,09	15,35	0,25	1,68%	here
3.D.a.4	6,89	6,94	0,05	0,75%	here
3.l	1,67	1,28	-0,40	-23,60%	here
NFR 5 - Waste	3,797	3,791	-0,005	-0,14%	sub-category chapters
5.B.1	1,765	1,802	0,037	2,10%	here
5.B.2	2,032	1,990	-0,042	-2,08%	here
NFR 6 - Other	18,17	18,24	0,07	0,41%	sub-category chapters
6.A	18,17	18,24	0,07	0,41%	