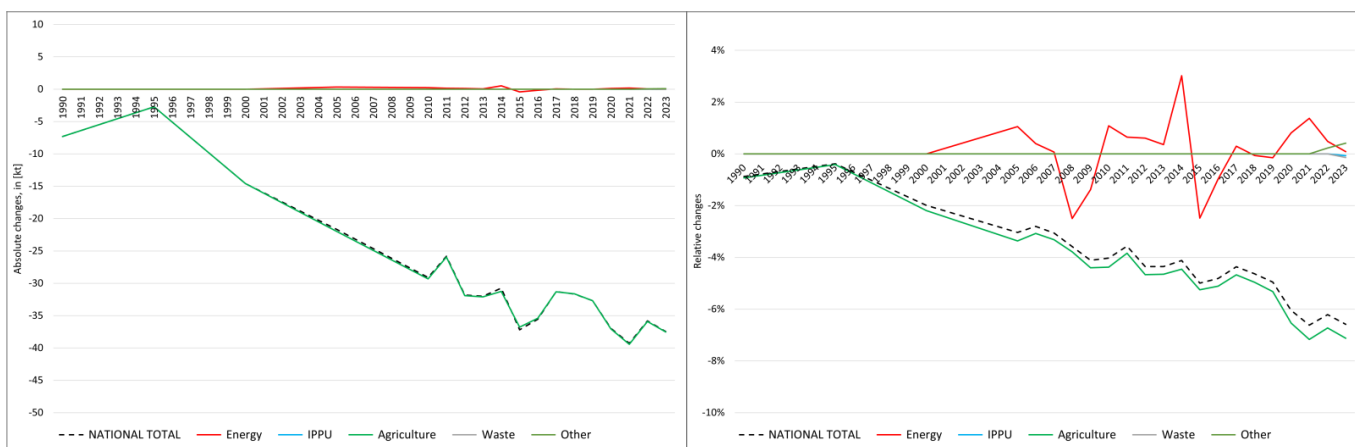


pollutant-specific data:	NOx	NM VOC	SOx	NH3	PM2.5	PM10	TSP	BC	CO	Pb	Cd	Hg	As	Cr	Cu	Ni	Se	Zn	PCDD/F	B[a]P	B[b]F	B[k]F	I[x]P	PAH1-4	HCB	PCB
--------------------------	-----	--------	-----	-----	-------	------	-----	----	----	----	----	----	----	----	----	----	----	----	--------	-------	-------	-------	-------	--------	-----	-----

Recalculations - Ammonia



The small changes within the **National Total** reported for **1990 (-7.32 kt or -0.88 %)** are dominated by revisions in sub-categories of **NFR 3** (-7.32 kt) together with less significant changes throughout NFRs 1 and 3.

The most significant percental change occurs for **NFR 3.D.a.1 with minus 5.88 %**.

Table 1: Changes in emission estimates for 1990

NFR Sector	Submission 2025	Submission 2026	Difference		Reasoning
			[kt]	relative	
NATIONAL TOTAL	834.48	827.15	-7.32	-0.88%	see description and reasoning in: sub-category chapters
NFR 1 - Energy	15.89	15.89	0.00	0.00%	sub-category chapters
1.A.2.g vii	0.005513	0.005514	0.000001	0.01%	here
1.A.4.a ii	0.0016202	0.0016199	-0.0000003	-0.02%	here
1.A.4.c ii	0.0115413	0.0115411	-0.0000001	-0.001%	here
NFR 2 - IPPU	14.68	14.68	0.00	0.00%	
NFR 3 - Agriculture	789.32	782.00	-7.32	-0.93%	sub-category chapters
3.B.1.a	60.08	58.81	-1.27	-2.11%	here
3.B.3	120.20	118.02	-2.18	-1.82%	here
3.D.a.1	129.55	121.93	-7.61	-5.88%	here
3.D.a.2.a	320.57	324.37	3.79	1.18%	here
3.D.a.2.c	1.5789	1.5785	-0.0004	-0.02%	here
3.D.a.3	24.58	24.50	-0.08	-0.32%	here
3.D.a.4	8.70	8.73	0.03	0.34%	here
NFR 5 - Waste	0.34	0.34	0.00	0.00%	
NFR 6 - Other	14.25	14.25	0.00	0.00%	

The strong changes within the **National Total** reported for **2023 (-37.46 kt or -6.58 %)** result mainly from revisions throughout **NFR 3 (-37.53 kt)** together with less significant changes throughout NFRs 1, 2, and 5.

The most significant percental changes occur for NFR sub-categories **1.A.2.g vii with plus 30.2 %** and **3.D.a.1 with minus 28.7 %**.

Table 2: Changes in emission estimates for 2023

	Submission 2025	Submission 2026	Difference		Reasoning
NFR Sector	[kt]		absolute	relative	see description and reasoning in:
NATIONAL TOTAL	569.00	531.54	-37.46	-6.58%	sub-category chapters
NFR 1 - Energy	12.70	12.71	0.01	0.08%	sub-category chapters
1.A.1.a	0.5772	0.5771	-0.0001	-0.02%	here
1.A.1.b	0.589	0.577	-0.01	-1.98%	here
1.A.1.c	0.022	0.024	0.002	6.75%	here
1.A.2.a	0.1011	0.1008	-0.0003	-0.31%	here
1.A.2.b	0.0072	0.0067	-0.0005	-7.54%	here
1.A.2.e	0.0024	0.0019	-0.0005	-21.14%	here
1.A.2.f	0.0201	0.0202	0.0001	0.36%	here
1.A.2.g vii	0.0043	0.0056	0.0013	30.20%	here
1.A.2.g viii	0.352	0.367	0.015	4.23%	here
1.A.3.b i	8.344	8.333	-0.01	-0.13%	here
1.A.3.b ii	0.288	0.285	-0.002	-0.78%	here
1.A.3.b iii	0.672	0.663	-0.01	-1.30%	here
1.A.3.b iv	0.0192	0.0190	-0.0002	-0.84%	here
1.A.3.c	0.007104	0.007106	0.000002	0.02%	here
1.A.3.d ii	0.0049	0.0048	0.00	-2.20%	here
1.A.4.a i	0.20	0.19	-0.01	-5.41%	here
1.A.4.a ii	0.0015	0.0018	0.0003	18.06%	here
1.A.4.b i	1.27	1.31	0.03	2.62%	here
1.A.4.b ii	0.000322	0.000306	-0.000015	-4.81%	here
1.A.4.c i	0.052	0.057	0.01	9.83%	here
1.A.4.c ii	0.014	0.012	-0.002	-12.37%	here
1.A.5.a	0.00679	0.00682	0.00002	0.35%	here
1.A.5.b	0.023	0.025	0.002	7.94%	here
NFR 2 - IPPU	7.389	7.384	-0.005	-0.07%	sub-category chapters
2.A.3	0.836	0.831	-0.005	-0.60%	here
2.G	0.5299	0.5300	0.0001	0.02%	here
NFR 3 - Agriculture	526.95	489.42	-37.53	-7.12%	sub-category chapters
3.B.1.a	47.56	39.50	-8.05	-16.93%	here
3.B.1.b	43.75	43.65	-0.10	-0.22%	here
3.B.3	62.12	59.50	-2.62	-4.21%	here
3.B.4.e	18.29	21.38	3.09	16.89%	here
3.B.4.g i	6.77	6.74	-0.03	-0.44%	here
3.B.4.g ii	7.67	7.57	-0.11	-1.41%	here
3.B.4.g iii	6.86	6.85	-0.01	-0.17%	here
3.B.4.g iv	1.63	1.70	0.07	4.50%	here
3.D.a.1	61.79	44.08	-17.71	-28.67%	here
3.D.a.2.a	185.00	174.47	-10.52	-5.69%	here
3.D.a.2.b	1.61	1.39	-0.22	-13.84%	here
3.D.a.2.c	58.35	57.13	-1.23	-2.10%	here
3.D.a.3	15.09	15.35	0.25	1.68%	here
3.D.a.4	6.89	6.94	0.05	0.75%	here
3.l	1.67	1.28	-0.40	-23.60%	here
NFR 5 - Waste	3.797	3.791	-0.005	-0.14%	sub-category chapters
5.B.1	1.765	1.802	0.037	2.10%	here
5.B.2	2.032	1.990	-0.042	-2.08%	here
NFR 6 - Other	18.17	18.24	0.07	0.41%	sub-category chapters
6.A	18.17	18.24	0.07	0.41%	