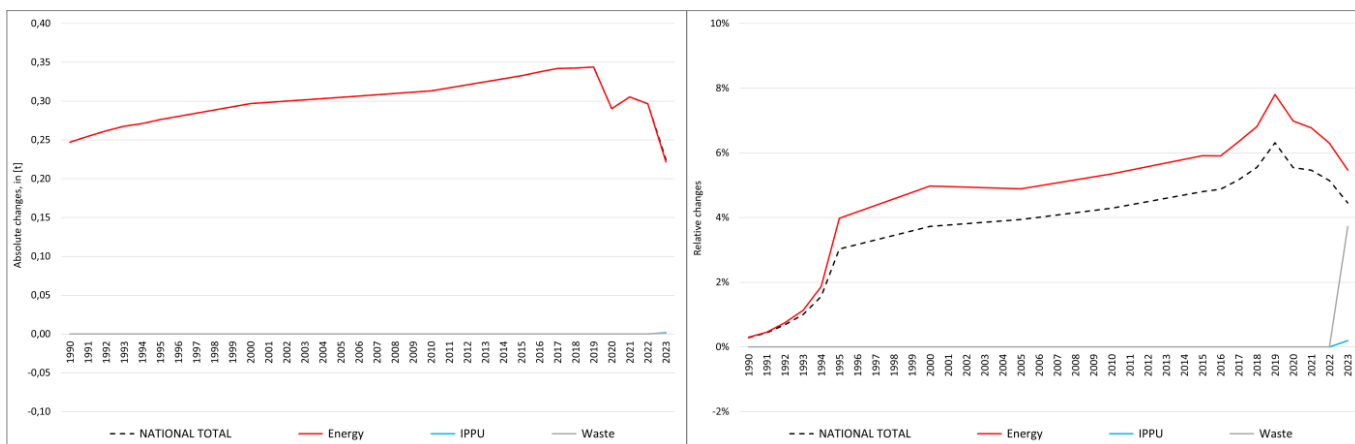


pollutant-specific data:	NOx	NMVOc	SOx	NH3	PM2.5	PM10	TSP	BC	CO	Pb	Cd	Hg	As	Cr	Cu	Ni	Se	Zn	PCDD/F	B[a]P	B[b]F	B[k]F	l[x]P	PAH1-4	HCB	PCB

# Recalculations - Arsenic (As)



With the marginal changes in NFRs **1.A.2.g vii**, **1.A.4.a ii** and **1.A.4.c ii** canceling each other out, the changes within the **National Total** reported for **1990 (+0.25 t or +0.29 %)** result entirely from a revision in **NFR 1.A.3.b vi with +0.25 t**, also resembling the strongest percental change with **+65.1 %**.

Table 1: Changes of emission estimates for 1990

NFR Sector	Submission 2025	Submission 2026	Difference		Reasoning
	[t]		absolute	relative	
<b>NATIONAL TOTAL</b>	<b>85.92</b>	<b>86.16</b>	<b>0.25</b>	<b>0.29%</b>	see description and reasoning in: sub-category chapters
<b>NFR 1 - Energy</b>	<b>82.37</b>	<b>82.61</b>	<b>0.25</b>	<b>0.30%</b>	sub-category chapters
1.A.2.g vii	0.000087208	0.000087215	0.000000007	0.01%	<a href="#">here</a>
1.A.3.b vi	0.38	0.63	0.25	65.10%	<a href="#">here</a>
1.A.4.a ii	0.000015586	0.000015581	-0.000000004	-0.03%	<a href="#">here</a>
1.A.4.c ii	0.000188308	0.000188305	-0.000000003	-0.001%	<a href="#">here</a>
<b>NFR 2 - IPPU</b>	<b>3.52</b>	<b>3.52</b>	<b>0.00</b>	<b>0.00%</b>	
<b>NFR 3 - Agriculture</b>	<b>NA</b>				
<b>NFR 5 - Waste</b>	<b>0.03</b>	<b>0.03</b>	<b>0.00</b>	<b>0.00%</b>	
<b>NFR 6 - Other</b>	<b>NA</b>				

The changes within the **National Total** reported for **2022 (+0.18 t or +3.19 %)** are dominated by a revision in NFR sub-category **1.A.1.b with plus 0.18 t** together with a variety of revisions throughout NFRs 1, 2 and 5.

Here, the most significant percental change occurs in **NFR 1.A.1.b with plus 18.6 %**.

Table 2: Changes of emission estimates for 2023

NFR Sector	Submission 2025	Submission 2026	Difference		Reasoning
	[t]		absolute	relative	
<b>NATIONAL TOTAL</b>	<b>5.05</b>	<b>5.28</b>	<b>0.22</b>	<b>4.45%</b>	see description and reasoning in: sub-category chapters
<b>NFR 1 - Energy</b>	<b>4.06</b>	<b>4.28</b>	<b>0.22</b>	<b>5.47%</b>	sub-category chapters
1.A.1.a	1.64	1.64	0.002	0.14%	<a href="#">here</a>
1.A.1.b	0.99	1.00	0.01	1.31%	<a href="#">here</a>
1.A.1.c	0.0054	0.0061	0.0007	13.56%	<a href="#">here</a>
1.A.2.g vii	0.00009	0.00010	0.00001	10.39%	<a href="#">here</a>
1.A.2.g viii	0.153	0.137	-0.017	-10.89%	<a href="#">here</a>
1.A.3.a i(i)	0.0000000029	0.0000000030	0.0000000001	2.34%	<a href="#">here</a>
1.A.3.a ii(i)	0.000000149	0.000000152	0.000000003	2.34%	<a href="#">here</a>

	Submission 2025	Submission 2026	Difference		Reasoning
<b>NFR Sector</b>	<b>[t]</b>			<b>relative</b>	<b>see description and reasoning in:</b>
<b>NATIONAL TOTAL</b>	<b>5.05</b>	<b>5.28</b>	<b>0.22</b>	<b>4.45%</b>	<b>sub-category chapters</b>
<b>NFR 1 - Energy</b>	<b>4.06</b>	<b>4.28</b>	<b>0.22</b>	<b>5.47%</b>	<b>sub-category chapters</b>
1.A.3.b i	0.00616	0.00615	-0.00001	-0.16%	<a href="#">here</a>
1.A.3.b ii	0.000453	0.000448	-0.000005	-1.02%	<a href="#">here</a>
1.A.3.b iii	0.00127	0.00126	-0.00001	-0.79%	<a href="#">here</a>
1.A.3.b iv	0.0001145	0.0001135	-0.0000010	-0.84%	<a href="#">here</a>
1.A.3.b vi	0.55	0.82	0.26	47.85%	<a href="#">here</a>
1.A.3.b vii	0.040	0.037	-0.003	-6.33%	<a href="#">here</a>
1.A.3.d ii	0.011393	0.010823	-0.0006	-5.00%	<a href="#">here</a>
1.A.4.a i	0.53	0.49	-0.04	-7.39%	<a href="#">here</a>
1.A.4.a ii	0.000010	0.000014	0.000004	38.53%	<a href="#">here</a>
1.A.4.b i	0.12233	0.12216	-0.00017	-0.14%	<a href="#">here</a>
1.A.4.b ii	0.000024	0.000023	-0.000001	-4.82%	<a href="#">here</a>
1.A.4.c ii	0.00021	0.00018	-0.00003	-13.56%	<a href="#">here</a>
1.A.5.b	0.0001414	0.0001412	-0.0000003	-0.19%	<a href="#">here</a>
<b>NFR 2 - IPPU</b>	<b>0.963</b>	<b>0.965</b>	<b>0.002</b>	<b>0.19%</b>	<b>sub-category chapters</b>
2.A.3	0.178	0.180	0.002	1.04%	<a href="#">here</a>
<b>NFR 3 - Agriculture</b>	<b>NA</b>				
<b>NFR 5 - Waste</b>	<b>0.0343</b>	<b>0.0356</b>	<b>0.0013</b>	<b>3.72%</b>	<b>sub-category chapters</b>
5.E	0.0343	0.0356	0.0013	3.72%	<a href="#">here</a>
<b>NFR 6 - Other</b>	<b>NA</b>				