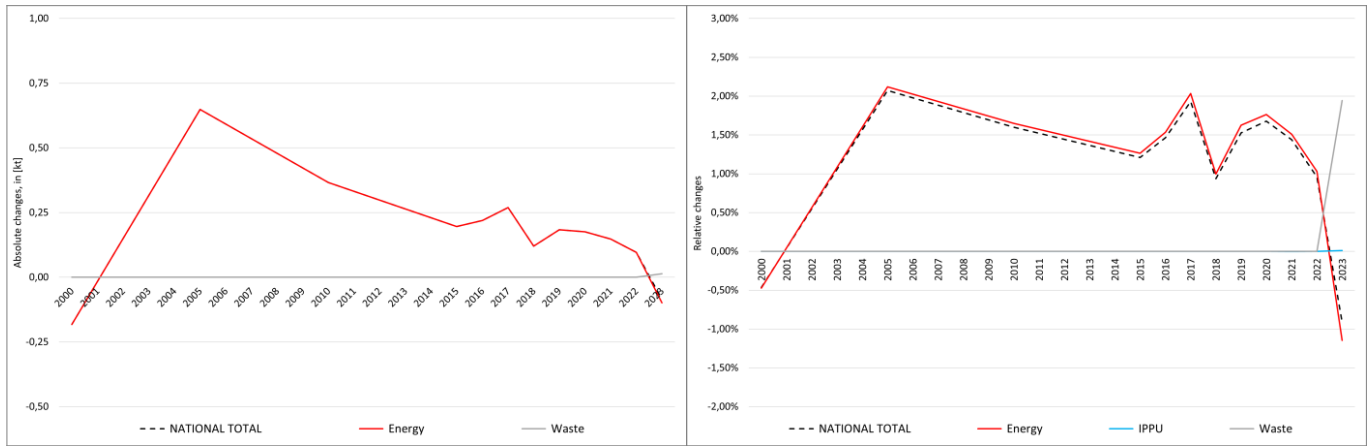


pollutant-specific data:	NOx	NM VOC	SOx	NH3	PM2.5	PM10	TSP	BC	CO	Pb	Cd	Hg	As	Cr	Cu	Ni	Se	Zn	PCDD/F	B[a]P	B[b]F	B[k]F	l[x]P	PAH1-4	HCB	PCB

Recalculations - Black Carbon (BC)



The small changes within the **National Total** reported for **2000 (-0.18 kt or -0.46 %)** result from a **variety of revisions in NFRs 1 and 5** with the biggest change occurring for NFR sub-category **1.A.3.d** with **-0.41 kt**. In addition, for NFR 1.A.3.b vii, BC emissions are reported for the first time.

The most significant percental change occurs for **NFR 1.A.4.c iii** with **-96 %**.

Table 1: Changes of emission estimates 2000

	Submission 2025	Submission 2026	Difference		Reasoning
NFR Sector	[kt]			relative	see description and reasoning in:
NATIONAL TOTAL	39.20	39.01	-0.18	-0.46%	sub-category chapters
NFR 1 - Energy	38.45	38.27	-0.18	-0.47%	sub-category chapters
1.A.3.b vi	1.62	1.73	0.11	6.57%	here
1.A.3.b vii	NE	0.15	0.15		here
1.A.3.d ii	0.74	0.33	-0.41	-55.17%	here
1.A.4.c iii	0.01	0.00	-0.01	-95.76%	here
1.A.5.b	0.14837	0.13262	-0.02	-10.61%	here
NFR 2 - IPPU	0.02	0.02	0.00	0.00%	
NFR 3 - Agriculture		NA			
NFR 5 - Waste	0.73	0.73	0.00	0.00%	
NFR 6 - Other		NA			

The small changes within the **National Total** reported for **2023 (-0.09 kt or -0.91 %)** result from a **variety of revisions in NFRs 1 and 5** with the biggest change occurring for NFR sub-category **1.A.4.c ii** with **-0.29 kt**. In addition, for NFR 1.A.3.b vii, BC emissions are reported for the first time.

The most significant percental change occurs for **NFR 1.A.4.c iii** with **-85.5 %**.

Table 2: Changes of emission estimates 2023

	Submission 2025	Submission 2026	Difference		Reasoning
NFR Sector		[kt]		relative	see description and reasoning in:
NATIONAL TOTAL	9,36	9,27	-0,09	-0,91%	sub-category chapters
NFR 1 - Energy	8,64	8,54	-0,10	-1,15%	sub-category chapters
1.A.1.a	0,0252	0,0253	0,0001	0,54%	here
1.A.1.b	0,0347	0,0333	-0,0014	-4,04%	here
1.A.1.c	0,00033	0,00036	0,00004	11,42%	here
1.A.2.g vii	0,18	0,24	0,07	38,02%	here

	Submission 2025	Submission 2026	Difference		Reasoning
NFR Sector	[kt]			relative	see description and reasoning in:
NATIONAL TOTAL	9,36	9,27	-0,09	-0,91%	sub-category chapters
NFR 1 - Energy	8,64	8,54	-0,10	-1,15%	sub-category chapters
1.A.2.g viii	0,029	0,027	-0,002	-5,51%	here
1.A.3.a i(i)	0,02766	0,02766	0,00	0,00%	here
1.A.3.a ii(i)	0,005327	0,005329	0,000002	0,04%	here
1.A.3.b i	0,813	0,826	0,013	1,55%	here
1.A.3.b ii	0,624	0,618	-0,006	-0,97%	here
1.A.3.b iii	0,3804	0,3817	0,0013	0,35%	here
1.A.3.b iv	0,154	0,153	-0,001	-0,83%	here
1.A.3.b vi	1,849	1,836	-0,013	-0,73%	here
1.A.3.b vii	NE	0,16	0,16		here
1.A.3.c	0,07963	0,07965	0,00002	0,02%	here
1.A.3.d ii	0,209	0,205	-0,004	-1,88%	here
1.A.4.a i	0,55	0,51	-0,04	-7,41%	here
1.A.4.a ii	0,08	0,11	0,03	38,34%	here
1.A.4.b i	1,320	1,316	-0,005	-0,35%	here
1.A.4.b ii	0,0052	0,0050	-0,0002	-4,71%	here
1.A.4.c i	0,085	0,085	0,00	0,00%	here
1.A.4.c ii	2,11	1,82	-0,29	-13,95%	here
1.A.4.c iii	0,0027	0,0004	-0,0023	-85,48%	here
1.A.5.a	0,012	0,013	0,001	8,43%	here
1.A.5.b	0,038	0,039	0,001	3,85%	here
1.B.1.b	0,016374	0,016377	0,000003	0,02%	here
NFR 2 - IPPU	0,01009710	0,01009821	0,000001	0,01%	sub-category chapters
2.G	0,00737347	0,00737458	0,000001	0,02%	here
NFR 3 - Agriculture	NA				
NFR 5 - Waste	0,71	0,72	0,01	1,94%	sub-category chapters
5.E	0,37	0,38	0,01	3,72%	here
NFR 6 - Other	NA				