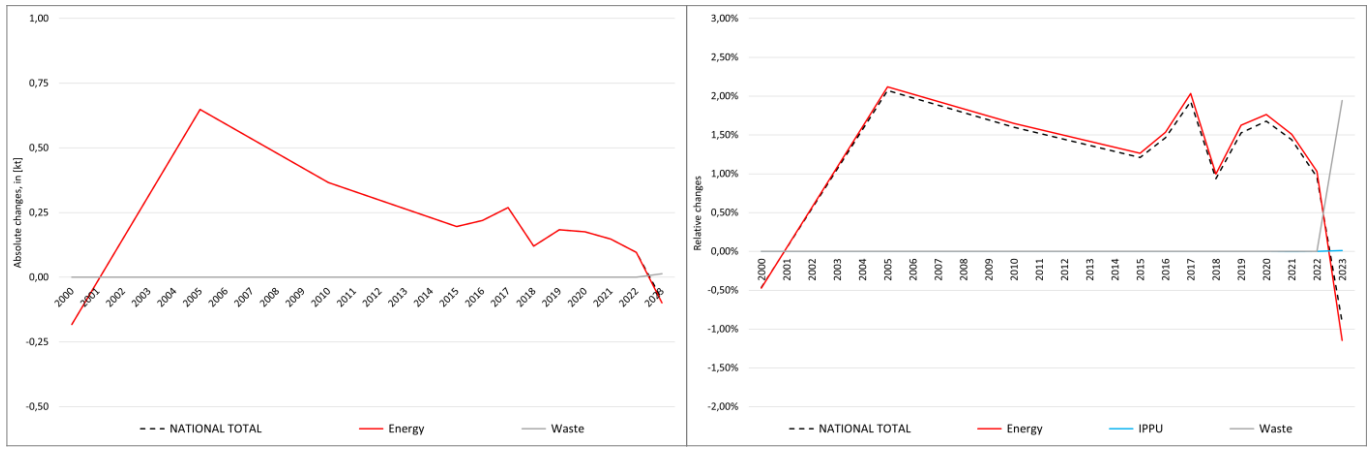


pollutant-specific data:	NOx	NM VOC	SOx	NH3	PM2.5	PM10	TSP	BC	CO	Pb	Cd	Hg	As	Cr	Cu	Ni	Se	Zn	PCDD/F	B[a]P	B[b]F	B[k]F	l[x]P	PAH1-4	HCB	PCB

Recalculations - Black Carbon (BC)



The small changes within the **National Total** reported for **2000 (-0.18 kt or -0.46 %)** result from a **variety of revisions in NFRs 1 and 5** with the biggest change occurring for NFR sub-category **1.A.3.d** with **-0.41 kt**. In addition, for NFR 1.A.3.b vii, BC emissions are reported for the first time.

The most significant percental change occurs for **NFR 1.A.4.c iii** with **-96 %**.

Table 1: Changes of emission estimates 2000

	Submission 2025	Submission 2026	Difference		Reasoning
NFR Sector	[kt]			relative	see description and reasoning in:
NATIONAL TOTAL	39.20	39.01	-0.18	-0.46%	sub-category chapters
NFR 1 - Energy	38.45	38.27	-0.18	-0.47%	sub-category chapters
1.A.3.b vi	1.62	1.73	0.11	6.57%	here
1.A.3.b vii	NE	0.15	0.15		here
1.A.3.d ii	0.74	0.33	-0.41	-55.17%	here
1.A.4.c iii	0.01	0.00	-0.01	-95.76%	here
1.A.5.b	0.14837	0.13262	-0.02	-10.61%	here
NFR 2 - IPPU	0.02	0.02	0.00	0.00%	
NFR 3 - Agriculture		NA			
NFR 5 - Waste	0.73	0.73	0.00	0.00%	
NFR 6 - Other		NA			

The small changes within the **National Total** reported for **2023 (-0.09 kt or -0.91 %)** result from a **variety of revisions in NFRs 1 and 5** with the biggest change occurring for NFR sub-category **1.A.4.c ii** with **-0.29 kt**. In addition, for NFR 1.A.3.b vii, BC emissions are reported for the first time.

The most significant percental change occurs for **NFR 1.A.4.c iii** with **-85.5 %**.

Table 2: Changes of emission estimates 2023

	Submission 2025	Submission 2026	Difference		Reasoning
NFR Sector		[kt]		relative	see description and reasoning in:
NATIONAL TOTAL	9.36	9.27	-0.09	-0.91%	sub-category chapters
NFR 1 - Energy	8.64	8.54	-0.10	-1.15%	sub-category chapters
1.A.1.a	0.0252	0.0253	0.0001	0.54%	here
1.A.1.b	0.0347	0.0333	-0.0014	-4.04%	here
1.A.1.c	0.00033	0.00036	0.00004	11.42%	here

	Submission 2025	Submission 2026	Difference		Reasoning
NFR Sector	[kt]			relative	see description and reasoning in:
NATIONAL TOTAL	9.36	9.27	-0.09	-0.91%	sub-category chapters
NFR 1 - Energy	8.64	8.54	-0.10	-1.15%	sub-category chapters
1.A.2.g vii	0.18	0.24	0.07	38.02%	here
1.A.2.g viii	0.029	0.027	-0.002	-5.51%	here
1.A.3.a i(i)	0.02766	0.02766	0.00	0.00%	here
1.A.3.a ii(i)	0.005327	0.005329	0.000002	0.04%	here
1.A.3.b i	0.813	0.826	0.013	1.55%	here
1.A.3.b ii	0.624	0.618	-0.006	-0.97%	here
1.A.3.b iii	0.3804	0.3817	0.0013	0.35%	here
1.A.3.b iv	0.154	0.153	-0.001	-0.83%	here
1.A.3.b vi	1.849	1.836	-0.013	-0.73%	here
1.A.3.b vii	NE	0.16	0.16		here
1.A.3.c	0.07963	0.07965	0.00002	0.02%	here
1.A.3.d ii	0.209	0.205	-0.004	-1.88%	here
1.A.4.a i	0.55	0.51	-0.04	-7.41%	here
1.A.4.a ii	0.08	0.11	0.03	38.34%	here
1.A.4.b i	1.320	1.316	-0.005	-0.35%	here
1.A.4.b ii	0.0052	0.0050	-0.0002	-4.71%	here
1.A.4.c i	0.085	0.085	0.00	0.00%	here
1.A.4.c ii	2.11	1.82	-0.29	-13.95%	here
1.A.4.c iii	0.0027	0.0004	-0.0023	-85.48%	here
1.A.5.a	0.012	0.013	0.001	8.43%	here
1.A.5.b	0.038	0.039	0.001	3.85%	here
1.B.1.b	0.016374	0.016377	0.000003	0.02%	here
NFR 2 - IPPU	0.01009710	0.01009821	0.000001	0.01%	sub-category chapters
2.G	0.00737347	0.00737458	0.000001	0.02%	here
NFR 3 - Agriculture	NA				
NFR 5 - Waste	0.71	0.72	0.01	1.94%	sub-category chapters
5.E	0.37	0.38	0.01	3.72%	here
NFR 6 - Other	NA				