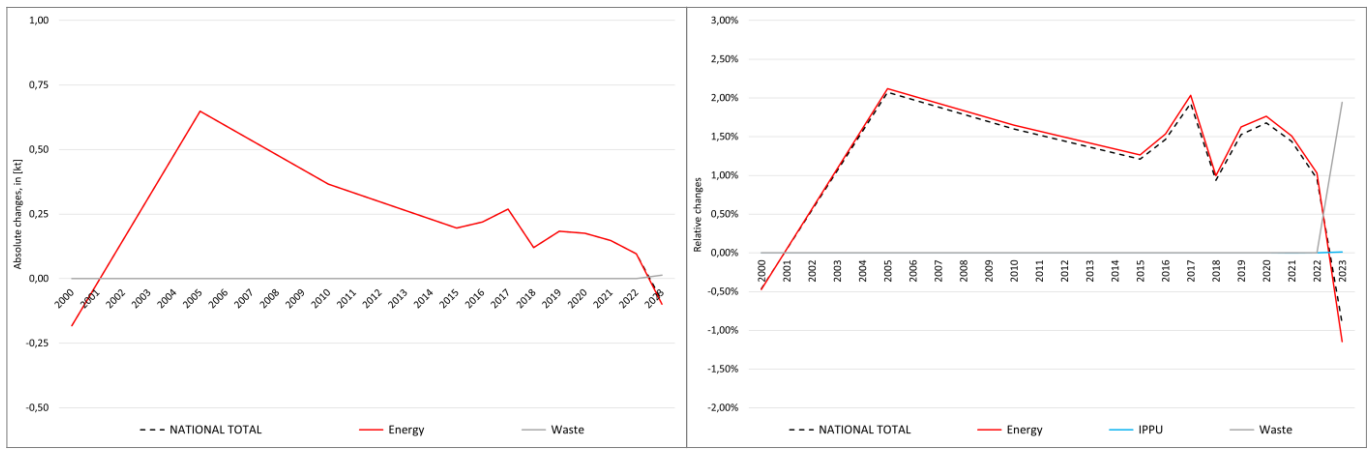


pollutant-specific data:	NOx	NM VOC	SOx	NH3	PM2.5	PM10	TSP	BC	CO	Pb	Cd	Hg	As	Cr	Cu	Ni	Se	Zn	PCDD/F	B[a]P	B[b]F	B[k]F	I[x]P	PAH1-4	HCB	PCB	

# Recalculations - Black Carbon (BC)



The small changes within the **National Total** reported for **2000 (-0.18 kt or -0.46 %)** result from a **variety of revisions in NFRs 1 and 5** with the biggest change occurring for NFR sub-category **1.A.3.d** with **-0.41 kt**. In addition, for NFR 1.A.3.b vii, BC emissions are reported for the first time.

The most significant percental change occurs for **NFR 1.A.4.c iii** with **-96 %**.

Table 1: Changes of emission estimates 2000

	Submission 2025	Submission 2026	Difference		Reasoning
<b>NFR Sector</b>	<b>[kt]</b>			<b>relative</b>	<b>see description and reasoning in:</b>
<b>NATIONAL TOTAL</b>	<b>39.20</b>	<b>39.01</b>	<b>-0.18</b>	<b>-0.46%</b>	<b>sub-category chapters</b>
<b>NFR 1 - Energy</b>	<b>38.45</b>	<b>38.27</b>	<b>-0.18</b>	<b>-0.47%</b>	<b>sub-category chapters</b>
1.A.3.b vi	1.62	1.73	0.11	6.57%	<a href="#">here</a>
1.A.3.b vii	NE	<u>0.15</u>	0.15		<a href="#">here</a>
1.A.3.d ii	0.74	0.33	<u>-0.41</u>	-55.17%	<a href="#">here</a>
1.A.4.c iii	0.01	0.00	-0.01	-95.76%	<a href="#">here</a>
1.A.5.b	0.14837	0.13262	-0.02	-10.61%	<a href="#">here</a>
<b>NFR 2 - IPPU</b>	<b>0.02</b>	<b>0.02</b>	<b>0.00</b>	<b>0.00%</b>	
<b>NFR 3 - Agriculture</b>		<b>NA</b>			
<b>NFR 5 - Waste</b>	<b>0.73</b>	<b>0.73</b>	<b>0.00</b>	<b>0.00%</b>	
<b>NFR 6 - Other</b>		<b>NA</b>			

The small changes within the **National Total** reported for **2023 (-0.09 kt or -0.91 %)** result from a **variety of revisions in NFRs 1 and 5** with the biggest change occurring for NFR sub-category **1.A.4.c ii** with **-0.29 kt**. In addition, for NFR 1.A.3.b vii, BC emissions are reported for the first time.

The most significant percental change occurs for **NFR 1.A.4.c iii** with **-85.5 %**.

Table 2: Changes of emission estimates 2023

	Submission 2025	Submission 2026	Difference		Reasoning
<b>NFR Sector</b>		<b>[kt]</b>		<b>relative</b>	<b>see description and reasoning in:</b>
<b>NATIONAL TOTAL</b>	<b>9.36</b>	<b>9.27</b>	<b>-0.09</b>	<b>-0.91%</b>	<b>sub-category chapters</b>
<b>NFR 1 - Energy</b>	<b>8.64</b>	<b>8.54</b>	<b>-0.10</b>	<b>-1.15%</b>	<b>sub-category chapters</b>
1.A.1.a	0.0252	0.0253	0.0001	0.54%	<a href="#">here</a>
1.A.1.b	0.0347	0.0333	-0.0014	-4.04%	<a href="#">here</a>
1.A.1.c	0.00033	0.00036	0.00004	11.42%	<a href="#">here</a>

	Submission 2025	Submission 2026	Difference		Reasoning
<b>NFR Sector</b>	<b>[kt]</b>			<b>relative</b>	<b>see description and reasoning in:</b>
<b>NATIONAL TOTAL</b>	<b>9.36</b>	<b>9.27</b>	<b>-0.09</b>	<b>-0.91%</b>	<b>sub-category chapters</b>
<b>NFR 1 - Energy</b>	<b>8.64</b>	<b>8.54</b>	<b>-0.10</b>	<b>-1.15%</b>	<b>sub-category chapters</b>
1.A.2.g vii	0.18	0.24	0.07	38.02%	<a href="#">here</a>
1.A.2.g viii	0.029	0.027	-0.002	-5.51%	<a href="#">here</a>
1.A.3.a i(i)	0.02766	0.02766	0.00	0.00%	<a href="#">here</a>
1.A.3.a ii(i)	0.005327	0.005329	0.000002	0.04%	<a href="#">here</a>
1.A.3.b i	0.813	0.826	0.013	1.55%	<a href="#">here</a>
1.A.3.b ii	0.624	0.618	-0.006	-0.97%	<a href="#">here</a>
1.A.3.b iii	0.3804	0.3817	0.0013	0.35%	<a href="#">here</a>
1.A.3.b iv	0.154	0.153	-0.001	-0.83%	<a href="#">here</a>
1.A.3.b vi	1.849	1.836	-0.013	-0.73%	<a href="#">here</a>
1.A.3.b vii	NE	0.16	0.16		<a href="#">here</a>
1.A.3.c	0.07963	0.07965	0.00002	0.02%	<a href="#">here</a>
1.A.3.d ii	0.209	0.205	-0.004	-1.88%	<a href="#">here</a>
1.A.4.a i	0.55	0.51	-0.04	-7.41%	<a href="#">here</a>
1.A.4.a ii	0.08	0.11	0.03	38.34%	<a href="#">here</a>
1.A.4.b i	1.320	1.316	-0.005	-0.35%	<a href="#">here</a>
1.A.4.b ii	0.0052	0.0050	-0.0002	-4.71%	<a href="#">here</a>
1.A.4.c i	0.085	0.085	0.00	0.00%	<a href="#">here</a>
1.A.4.c ii	2.11	1.82	-0.29	-13.95%	<a href="#">here</a>
1.A.4.c iii	0.0027	0.0004	-0.0023	-85.48%	<a href="#">here</a>
1.A.5.a	0.012	0.013	0.001	8.43%	<a href="#">here</a>
1.A.5.b	0.038	0.039	0.001	3.85%	<a href="#">here</a>
1.B.1.b	0.016374	0.016377	0.000003	0.02%	<a href="#">here</a>
<b>NFR 2 - IPPU</b>	<b>0.01009710</b>	<b>0.01009821</b>	<b>0.000001</b>	<b>0.01%</b>	<b>sub-category chapters</b>
2.G	0.00737347	0.00737458	0.000001	0.02%	<a href="#">here</a>
<b>NFR 3 - Agriculture</b>	<b>NA</b>				
<b>NFR 5 - Waste</b>	<b>0.71</b>	<b>0.72</b>	<b>0.01</b>	<b>1.94%</b>	<b>sub-category chapters</b>
5.E	0.37	0.38	0.01	3.72%	<a href="#">here</a>
<b>NFR 6 - Other</b>	<b>NA</b>				