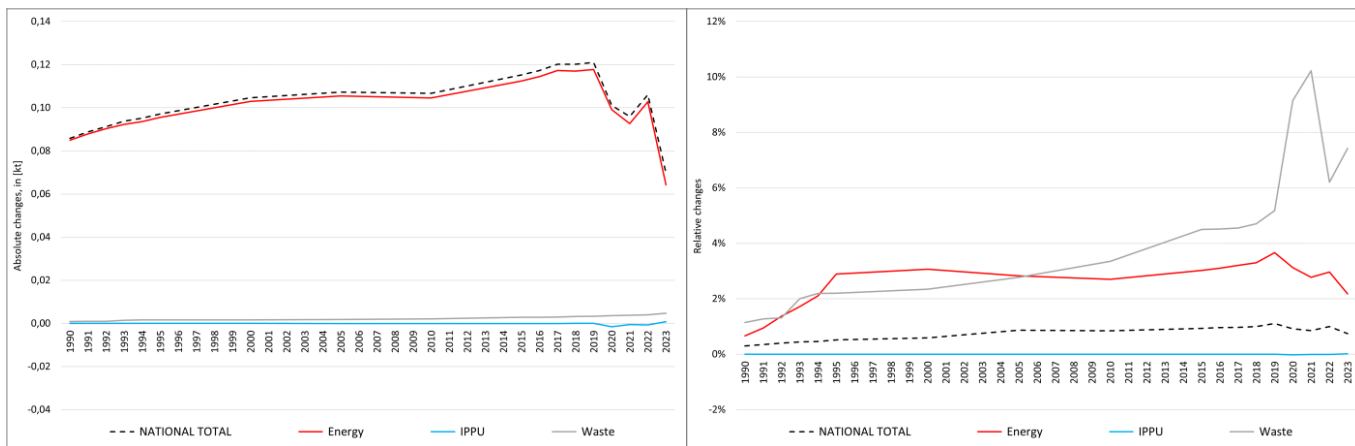


pollutant-specific data: NOx NMVOC SOx NH3 PM2.5 PM10 TSP BC CO Pb Cd Hg As Cr Cu Ni Se Zn PCDD/F B[a]P B[b]F B[k]F I[x]P PAH1-4 HCB PCB

Recalculations - Cadmium (Cd)



The rather small changes within the **National Total** reported for **1990 (+0.09 t or + 0.29 %)** result almost entirely from a revision in **NFR sub-category 1.A.3.b vi with +0.08 t**.

However, the by far strongest percental change occurs for **NFR 5.C.1.b v with plus 160,827 %**.

Table 1: Changes of emission estimates 1990

	Submission 2025	Submission 2026	Difference		Reasoning
NFR Sector	[t]			relative	see description and reasoning in:
NATIONAL TOTAL	29.10	29.19	0.09	0.29%	sub-category chapters
NFR 1 - Energy	12.76	12.84	0.08	0.67%	sub-category chapters
1.A.2.g vii	0.000045234	0.000045238	0.000000004	0.01%	here
1.A.3.b vi	0.15	0.23	0.08	57.26%	here
1.A.3.b vii	0.0022136	0.0022131	-0.0000005	-0.02%	here
1.A.4.a ii	0.000007793	0.000007791	-0.000000002	-0.03%	here
1.A.4.c ii	0.0065754	0.0065750	-0.0000005	-0.01%	here
NFR 2 - IPPU	16.27	16.27	0.00	0.00%	
NFR 3 - Agriculture	NA				
NFR 5 - Waste	0.074027	0.074874	0.000846	1.14%	sub-category chapters
5.C.1.b v	0.000001	0.000847	0.000846	160,827%	here
NFR 6 - Other	NA				

The small changes within the **National Total** reported for **2023 (+0.07 t or +0.75 %)** result from a **variety of revisions throughout NFRs 1, 2 and 5** dominated by revised emission estimates for NFR sub-category **1.A.3.b vi with +0.09 t**.

However, the by far strongest percental change occurs for **NFR 5.C.1.b v with plus 160,827 %**.

Table 2: Changes of emission estimates 2023

	Submission 2025	Submission 2026	Difference		Reasoning
NFR Sector	[t]			relative	see description and reasoning in:
NATIONAL TOTAL	9.36	9.43	0.07	0.75%	sub-category chapters
NFR 1 - Energy	2.95	3.02	0.06	2.18%	sub-category chapters
1.A.1.a	0.5937	0.5943	0.0006	0.11%	here
1.A.1.b	1.2391	1.2387	-0.0004	-0.03%	here
1.A.1.c	0.008	0.009	0.001	13.57%	here

	Submission 2025	Submission 2026	Difference		Reasoning
NFR Sector	[t]			relative	see description and reasoning in:
NATIONAL TOTAL	9.36	9.43	0.07	0.75%	sub-category chapters
NFR 1 - Energy	2.95	3.02	0.06	2.18%	sub-category chapters
1.A.2.g vii	0.000054	0.000057	0.000003	5.86%	here
1.A.2.g viii	0.093	0.088	-0.005	-5.22%	here
1.A.3.a i(i)	0.00000000196	0.00000000201	0.00000000005	2.34%	here
1.A.3.a ii(i)	0.0000000099	0.000000101	0.000000002	2.34%	here
1.A.3.b i	0.003907	0.003901	-0.000006	-0.16%	here
1.A.3.b ii	0.000243	0.000241	-0.000002	-1.02%	here
1.A.3.b iii	0.000656	0.000651	-0.000005	-0.79%	here
1.A.3.b iv	0.0000763	0.0000757	-0.0000006	-0.84%	here
1.A.3.b vi	0.22	0.31	0.09	41.70%	here
1.A.3.b vii	0.0032	0.0030	-0.0002	-6.34%	here
1.A.3.c	0.003639	0.003638	-0.000001	-0.02%	here
1.A.3.d ii	0.0043	0.0041	-0.0001	-2.65%	here
1.A.4.a i	0.249	0.231	-0.02	-7.33%	here
1.A.4.a ii	0.000005	0.000007	0.000002	38.53%	here
1.A.4.b i	0.521	0.519	-0.002	-0.35%	here
1.A.4.b ii	0.00138	0.00132	-0.00007	-4.72%	here
1.A.4.c ii	0.007	0.005	-0.002	-24.52%	here
1.A.5.b	0.0000418	0.0000416	-0.0000002	-0.41%	here
NFR 2 - IPPU	6.3417002	6.3425150	0.000815	0.01%	sub-category chapters
2.A.3	0.015641	0.015562	-0.000079	-0.51%	here
2.G	0.74417675	0.74507085	0.0008941	0.12%	here
NFR 3 - Agriculture	NA				
NFR 5 - Waste	0.06346	0.06817	0.00471	7.42%	sub-category chapters
5.C.1.b v	0.000002	0.003907	0.003905	160,827%	here
5.E	0.021601	0.022405	0.000804	3.72%	here
NFR 6 - Other	NA				