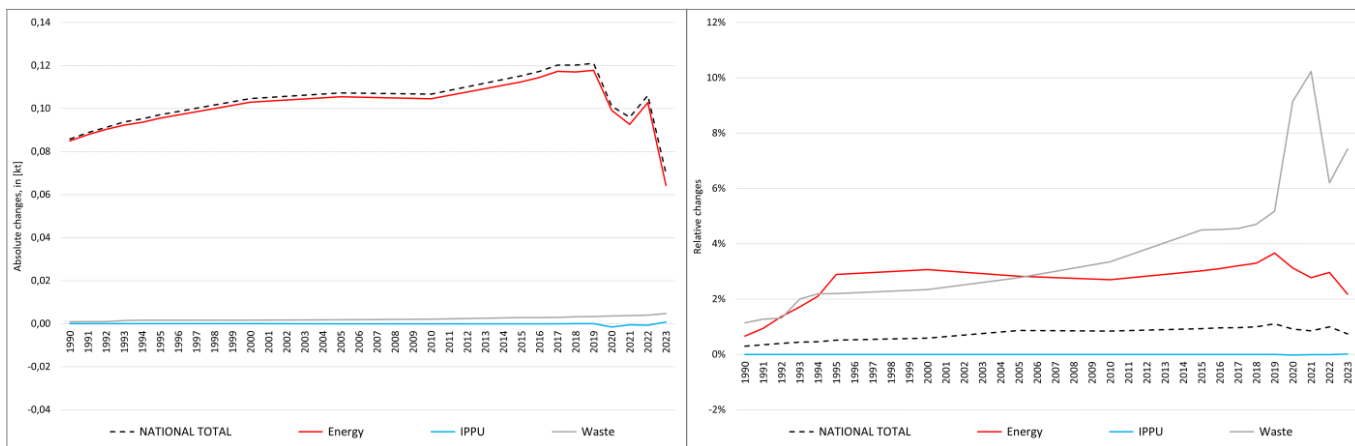


pollutant-specific data:	NOx	NM VOC	SOx	NH3	PM2.5	PM10	TSP	BC	CO	Pb	<b>Cd</b>	Hg	As	Cr	Cu	Ni	Se	Zn	PCDD/F	B[a]P	B[b]F	B[k]F	I[x]P	PAH1-4	HCB	PCB

# Recalculations - Cadmium (Cd)



The rather small changes within the **National Total** reported for **1990 (+0.09 t or + 0.29 %)** result almost entirely from a revision in **NFR sub-category 1.A.3.b vi with +0.08 t**.

However, the by far strongest percental change occurs for **NFR 5.C.1.b v with plus 160,827 %**.

Table 1: Changes of emission estimates 1990

NFR Sector	Submission 2025	Submission 2026	Difference		Reasoning
	[t]			relative	
<b>NATIONAL TOTAL</b>	<b>29.10</b>	<b>29.19</b>	<b>0.09</b>	<b>0.29%</b>	see description and reasoning in: sub-category chapters
<b>NFR 1 - Energy</b>	<b>12.76</b>	<b>12.84</b>	<b>0.08</b>	<b>0.67%</b>	sub-category chapters
1.A.2.g vii	0.000045234	0.000045238	0.000000004	0.01%	<a href="#">here</a>
1.A.3.b vi	0.15	0.23	0.08	57.26%	<a href="#">here</a>
1.A.3.b vii	0.0022136	0.0022131	-0.0000005	-0.02%	<a href="#">here</a>
1.A.4.a ii	0.000007793	0.000007791	-0.000000002	-0.03%	<a href="#">here</a>
1.A.4.c ii	0.0065754	0.0065750	-0.0000005	-0.01%	<a href="#">here</a>
<b>NFR 2 - IPPU</b>	<b>16.27</b>	<b>16.27</b>	<b>0.00</b>	<b>0.00%</b>	
<b>NFR 3 - Agriculture</b>	<b>NA</b>				
<b>NFR 5 - Waste</b>	<b>0.074027</b>	<b>0.074874</b>	<b>0.000846</b>	<b>1.14%</b>	sub-category chapters
5.C.1.b v	0.000001	0.000847	0.000846	160,827%	<a href="#">here</a>
<b>NFR 6 - Other</b>	<b>NA</b>				

The small changes within the **National Total** reported for **2023 (+0.07 t or +0.75 %)** result from a **variety of revisions throughout NFRs 1, 2 and 5** dominated by revised emission estimates for NFR sub-category **1.A.3.b vi with +0.09 t**.

However, the by far strongest percental change occurs for **NFR 5.C.1.b v with plus 160,827 %**.

Table 2: Changes of emission estimates 2023

NFR Sector	Submission 2025	Submission 2026	Difference		Reasoning
	[t]			relative	
<b>NATIONAL TOTAL</b>	<b>9.36</b>	<b>9.43</b>	<b>0.07</b>	<b>0.75%</b>	see description and reasoning in: sub-category chapters
<b>NFR 1 - Energy</b>	<b>2.95</b>	<b>3.02</b>	<b>0.06</b>	<b>2.18%</b>	sub-category chapters
1.A.1.a	0.5937	0.5943	0.0006	0.11%	<a href="#">here</a>
1.A.1.b	1.2391	1.2387	-0.0004	-0.03%	<a href="#">here</a>
1.A.1.c	0.008	0.009	0.001	13.57%	<a href="#">here</a>

	Submission 2025	Submission 2026	Difference		Reasoning
NFR Sector	[t]			relative	see description and reasoning in:
<b>NATIONAL TOTAL</b>	<b>9.36</b>	<b>9.43</b>	<b>0.07</b>	<b>0.75%</b>	<b>sub-category chapters</b>
<b>NFR 1 - Energy</b>	<b>2.95</b>	<b>3.02</b>	<b>0.06</b>	<b>2.18%</b>	<b>sub-category chapters</b>
1.A.2.g vii	0.000054	0.000057	0.000003	5.86%	<a href="#">here</a>
1.A.2.g viii	0.093	0.088	-0.005	-5.22%	<a href="#">here</a>
1.A.3.a i(i)	0.00000000196	0.00000000201	0.00000000005	2.34%	<a href="#">here</a>
1.A.3.a ii(i)	0.0000000099	0.000000101	0.000000002	2.34%	<a href="#">here</a>
1.A.3.b i	0.003907	0.003901	-0.000006	-0.16%	<a href="#">here</a>
1.A.3.b ii	0.000243	0.000241	-0.000002	-1.02%	<a href="#">here</a>
1.A.3.b iii	0.000656	0.000651	-0.000005	-0.79%	<a href="#">here</a>
1.A.3.b iv	0.0000763	0.0000757	-0.0000006	-0.84%	<a href="#">here</a>
1.A.3.b vi	0.22	0.31	0.09	41.70%	<a href="#">here</a>
1.A.3.b vii	0.0032	0.0030	-0.0002	-6.34%	<a href="#">here</a>
1.A.3.c	0.003639	0.003638	-0.000001	-0.02%	<a href="#">here</a>
1.A.3.d ii	0.0043	0.0041	-0.0001	-2.65%	<a href="#">here</a>
1.A.4.a i	0.249	0.231	-0.02	-7.33%	<a href="#">here</a>
1.A.4.a ii	0.000005	0.000007	0.000002	38.53%	<a href="#">here</a>
1.A.4.b i	0.521	0.519	-0.002	-0.35%	<a href="#">here</a>
1.A.4.b ii	0.00138	0.00132	-0.00007	-4.72%	<a href="#">here</a>
1.A.4.c ii	0.007	0.005	-0.002	-24.52%	<a href="#">here</a>
1.A.5.b	0.0000418	0.0000416	-0.0000002	-0.41%	<a href="#">here</a>
<b>NFR 2 - IPPU</b>	<b>6.3417002</b>	<b>6.3425150</b>	<b>0.000815</b>	<b>0.01%</b>	<b>sub-category chapters</b>
2.A.3	0.015641	0.015562	-0.000079	-0.51%	<a href="#">here</a>
2.G	0.74417675	0.74507085	0.0008941	0.12%	<a href="#">here</a>
<b>NFR 3 - Agriculture</b>	<b>NA</b>				
<b>NFR 5 - Waste</b>	<b>0.06346</b>	<b>0.06817</b>	<b>0.00471</b>	<b>7.42%</b>	<b>sub-category chapters</b>
5.C.1.b v	0.000002	0.003907	0.003905	160,827%	<a href="#">here</a>
5.E	0.021601	0.022405	0.000804	3.72%	<a href="#">here</a>
<b>NFR 6 - Other</b>	<b>NA</b>				