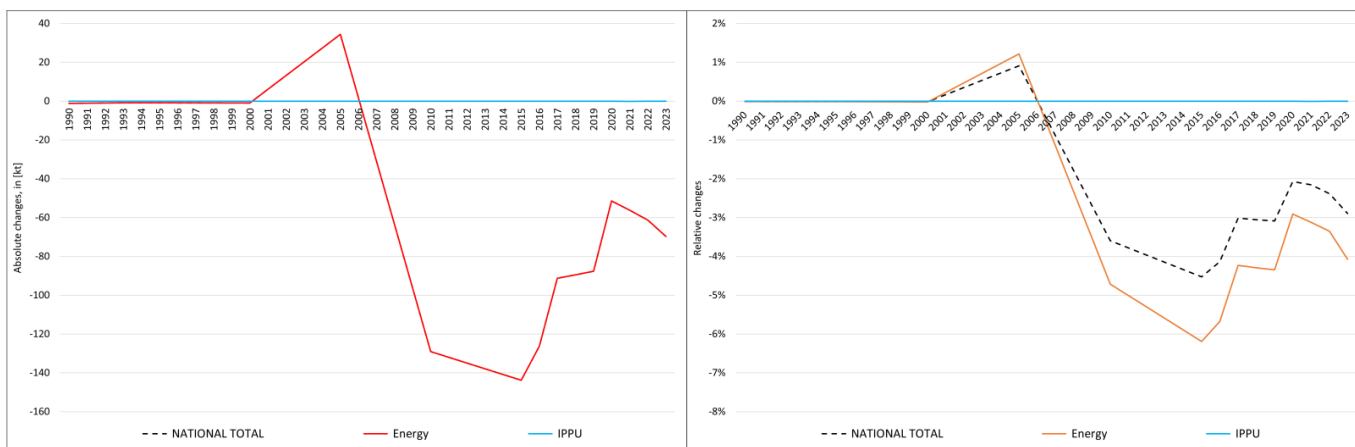


pollutant-specific data:	NOx	NM VOC	SOx	NH3	PM2.5	PM10	TSP	BC	CO	Pb	Cd	Hg	As	Cr	Cu	Ni	Se	Zn	PCDD/F	B[a]P	B[b]F	B[k]F	I[x]P	PAH1-4	HCB	PCB

Recalculations - Carbon monoxide (CO)



The marginal changes in the **National Total** reported for **1990 (-1.22 kt or -0.01 %)** are dominated by a revisions in NFR sub-category **1.A.3.d ii with -1.15 kt**.

However, the strongest percental change occurs for NFR **1.A.4.c iii with minus 52 %**.

Table 1: Changes in emission estimates for 1990

	Submission 2025	Submission 2026	Difference		Reasoning
NFR Sector	[kt]		absolute	relative	see description and reasoning in:
NATIONAL TOTAL	13.320,53	13.319,31	-1,22	-0,01%	sub-category chapters
NFR 1 - Energy	12.050,69	12.049,47	-1,22	-0,01%	sub-category chapters
1.A.2.g vii	73,97	73,98	0,01	0,01%	here
1.A.3.d ii	21,53	20,39	-1,15	-5,32%	here
1.A.4.a ii	6,05	6,05	0,00	-0,03%	here
1.A.4.c iii	0,04	0,02	-0,02	-51,89%	here
1.A.5.b	116,99	116,93	-0,06	-0,05%	here
NFR 2 - IPPU	1.248,77	1.248,77	0,00	0,00%	
NFR 3 - Agriculture	NA				
NFR 5 - Waste	21,08	21,08	0,00	0,00%	
NFR 6 - Other	NA				

The far more significant changes in the **National Total** reported for **2023 (-69.7 kt or 2.89 %)** are dominated by revisions within NFR sub-categories **1.A.2.g vii (-43 kt)** and **1.A.4.c ii (-16 kt)**.

In contrast, the most significant percental change occurs for NFR **1.A.4.c iii with minus 47 %**.

Table 2: Changes in emission estimates for 2023

	Submission 2025	Submission 2026	Difference		Reasoning
NFR Sector	[kt]		absolute	relative	see description and reasoning in:
NATIONAL TOTAL	2.409,34	2.339,64	-69,70	-2,89%	sub-category chapters
NFR 1 - Energy	1.709,75	1.640,05	-69,70	-4,08%	sub-category chapters
1.A.1.a	81,78	81,78	0,01	0,01%	here
1.A.1.b	1,45	1,54	0,09	6,17%	here
1.A.1.c	10,37	10,85	0,48	4,62%	here
1.A.2.a	30,97	30,73	-0,24	-0,78%	here
1.A.2.b	0,1391	0,1388	-0,0003	-0,20%	here
1.A.2.e	0,091	0,072	-0,02	-20,64%	here

	Submission 2025	Submission 2026	Difference		Reasoning
NFR Sector	[kt]		absolute	relative	see description and reasoning in:
NATIONAL TOTAL	2.409,34	2.339,64	-69,70	-2,89%	sub-category chapters
NFR 1 - Energy	1.709,75	1.640,05	-69,70	-4,08%	sub-category chapters
1.A.2.f	1,04	1,00	-0,04	-3,95%	here
1.A.2.g vii	180,53	137,46	-43,07	-23,86%	here
1.A.2.g viii	15,60	15,16	-0,45	-2,86%	here
1.A.3.a ii(i)	1,89	1,90	0,01	0,43%	here
1.A.3.b i	661,63	660,65	-0,98	-0,15%	here
1.A.3.b ii	38,47	38,32	-0,15	-0,39%	here
1.A.3.b iii	23,89	23,82	-0,07	-0,29%	here
1.A.3.b iv	53,25	52,80	-0,45	-0,85%	here
1.A.3.c	1,0962	1,0963	0,0002	0,02%	here
1.A.3.d ii	6,95	6,04	-0,91	-13,14%	here
1.A.4.a i	52,48	49,13	-3,35	-6,39%	here
1.A.4.a ii	1,20	1,49	0,29	24,44%	here
1.A.4.b i	358,50	357,39	-1,11	-0,31%	here
1.A.4.b ii	82,65	78,65	-4,00	-4,84%	here
1.A.4.c i	15,25	15,24	-0,01	-0,08%	here
1.A.4.c ii	73,13	57,23	-15,89	-21,73%	here
1.A.4.c iii	0,02	0,01	-0,01	-46,98%	here
1.A.5.a	1,358	1,464	0,11	7,82%	here
1.A.5.b	10,471	10,561	0,09	0,86%	here
1.B.2.a iv	0,322	0,321	-0,001	-0,26%	
1.B.2.c	0,096	0,095	-0,001	-1,09%	
NFR 2 - IPPU	683,7734	683,7749	0,00150	0,00022%	sub-category chapters
2.A.3	0,4671	0,4669	-0,00019	-0,04%	here
2.G	11,423	11,425	0,00169	0,01%	here
NFR 3 - Agriculture	NA				
NFR 5 - Waste	15,82	15,82	0,00	0,00%	
NFR 6 - Other	NA				