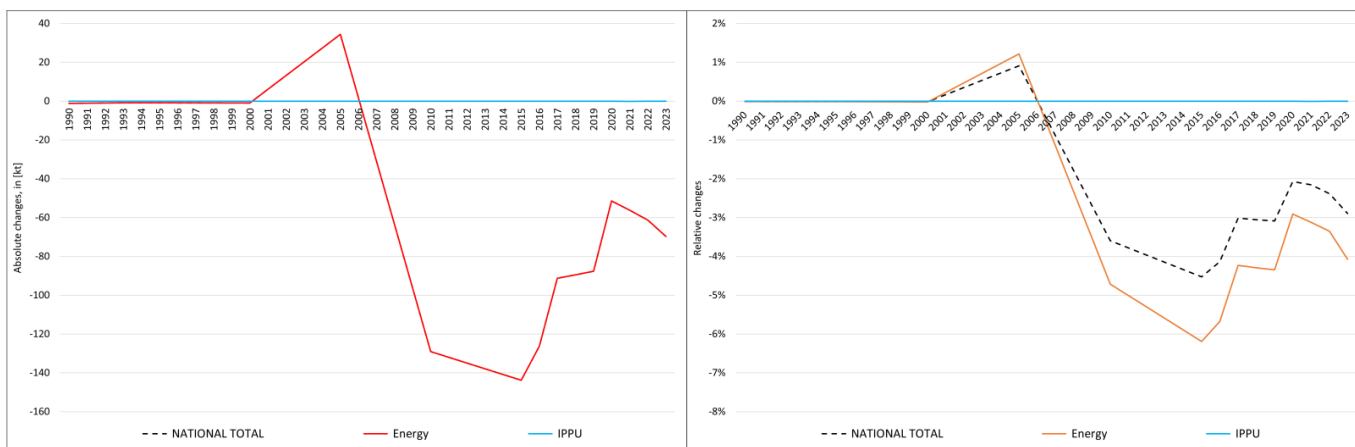


pollutant-specific data:	NOx	NM VOC	SOx	NH3	PM2.5	PM10	TSP	BC	CO	Pb	Cd	Hg	As	Cr	Cu	Ni	Se	Zn	PCDD/F	B[a]P	B[b]F	B[k]F	I[x]P	PAH1-4	HCB	PCB

Recalculations - Carbon monoxide (CO)



The marginal changes in the **National Total** reported for **1990 (-1.22 kt or -0.01 %)** are dominated by a revisions in NFR sub-category **1.A.3.d ii with -1.15 kt**.

However, the strongest percental change occurs for NFR **1.A.4.c iii with minus 52 %**.

Table 1: Changes in emission estimates for 1990

NFR Sector	Submission 2025	Submission 2026	Difference		Reasoning
	[kt]		absolute	relative	see description and reasoning in:
NATIONAL TOTAL	13,320.53	13,319.31	-1.22	-0.01%	sub-category chapters
NFR 1 - Energy	12,050.69	12,049.47	-1.22	-0.01%	sub-category chapters
1.A.2.g vii	73.97	73.98	0.01	0.01%	here
1.A.3.d ii	21.53	20.39	-1.15	-5.32%	here
1.A.4.a ii	6.05	6.05	0.00	-0.03%	here
1.A.4.c iii	0.04	0.02	-0.02	-51.89%	here
1.A.5.b	116.99	116.93	-0.06	-0.05%	here
NFR 2 - IPPU	1,248,77	1,248,77	0,00	0,00%	
NFR 3 - Agriculture	NA				
NFR 5 - Waste	21.08	21.08	0.00	0.00%	
NFR 6 - Other	NA				

The far more significant changes in the **National Total** reported for **2023 (-69.7 kt or 2.89 %)** are dominated by revisions within NFR sub-categories **1.A.2.g vii (-43 kt)** and **1.A.4.c ii (-16 kt)**.

In contrast, the most significant percental change occurs for NFR **1.A.4.c iii with minus 47 %**.

Table 2: Changes in emission estimates for 2023

NFR Sector	Submission 2025	Submission 2026	Difference		Reasoning
	[kt]		absolute	relative	see description and reasoning in:
NATIONAL TOTAL	2,409.34	2,339.64	-69.70	-2.89%	sub-category chapters
NFR 1 - Energy	1,709.75	1,640.05	-69.70	-4.08%	sub-category chapters
1.A.1.a	81.78	81.78	0.01	0.01%	here
1.A.1.b	1.45	1.54	0.09	6.17%	here
1.A.1.c	10.37	10.85	0.48	4.62%	here
1.A.2.a	30.97	30.73	-0.24	-0.78%	here
1.A.2.b	0.1391	0.1388	-0.0003	-0.20%	here

	Submission 2025	Submission 2026	Difference		Reasoning
NFR Sector	[kt]		absolute	relative	see description and reasoning in:
NATIONAL TOTAL	2,409.34	2,339.64	-69.70	-2.89%	sub-category chapters
NFR 1 - Energy	1,709.75	1,640.05	-69.70	-4.08%	sub-category chapters
1.A.2.e	0.091	0.072	-0.02	-20.64%	here
1.A.2.f	1.04	1.00	-0.04	-3.95%	here
1.A.2.g vii	180.53	137.46	-43.07	-23.86%	here
1.A.2.g viii	15.60	15.16	-0.45	-2.86%	here
1.A.3.a ii(i)	1.89	1.90	0.01	0.43%	here
1.A.3.b i	661.63	660.65	-0.98	-0.15%	here
1.A.3.b ii	38.47	38.32	-0.15	-0.39%	here
1.A.3.b iii	23.89	23.82	-0.07	-0.29%	here
1.A.3.b iv	53.25	52.80	-0.45	-0.85%	here
1.A.3.c	1.0962	1.0963	0.0002	0.02%	here
1.A.3.d ii	6.95	6.04	-0.91	-13.14%	here
1.A.4.a i	52.48	49.13	-3.35	-6.39%	here
1.A.4.a ii	1.20	1.49	0.29	24.44%	here
1.A.4.b i	358.50	357.39	-1.11	-0.31%	here
1.A.4.b ii	82.65	78.65	-4.00	-4.84%	here
1.A.4.c i	15.25	15.24	-0.01	-0.08%	here
1.A.4.c ii	73.13	57.23	-15.89	-21.73%	here
1.A.4.c iii	0.02	0.01	-0.01	-46.98%	here
1.A.5.a	1.358	1.464	0.11	7.82%	here
1.A.5.b	10.471	10.561	0.09	0.86%	here
1.B.2.a iv	0.322	0.321	-0.001	-0.26%	
1.B.2.c	0.096	0.095	-0.001	-1.09%	
NFR 2 - IPPU	683.7734	683.7749	0.00150	0.00022%	sub-category chapters
2.A.3	0.4671	0.4669	-0.00019	-0.04%	here
2.G	11.423	11.425	0.00169	0.01%	here
NFR 3 - Agriculture	NA				
NFR 5 - Waste	15.82	15.82	0.00	0.00%	
NFR 6 - Other	NA				