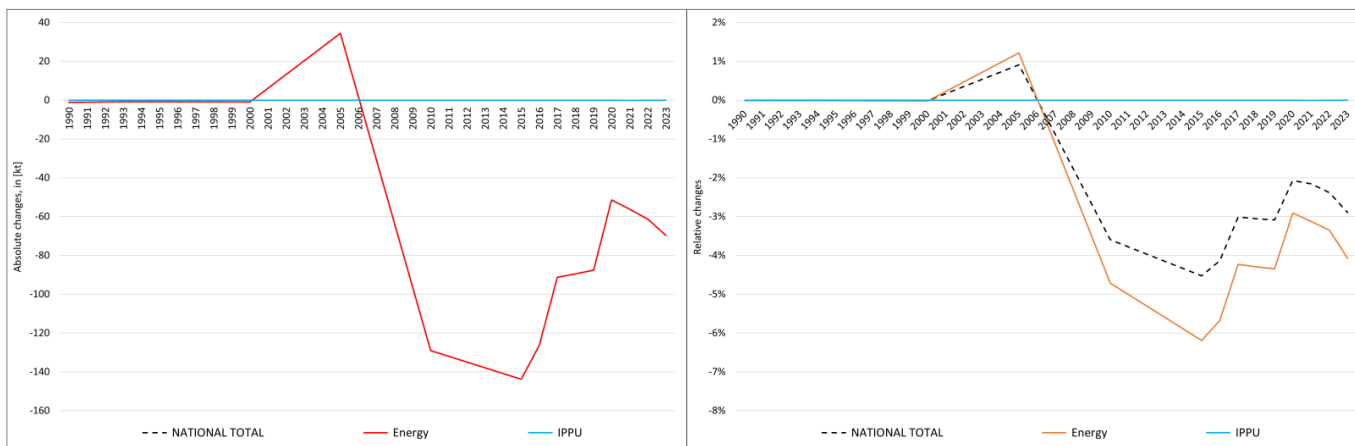


| | | | | | | | | | | | | | | | | | | | | | | | | | | |
|--------------------------|-----|--------|-----|-----|-------|------|-----|----|----|----|----|----|----|----|----|----|----|----|--------|-------|-------|-------|-------|--------|-----|-----|
| pollutant-specific data: | NOx | NM VOC | SOx | NH3 | PM2.5 | PM10 | TSP | BC | CO | Pb | Cd | Hg | As | Cr | Cu | Ni | Se | Zn | PCDD/F | B[a]P | B[b]F | B[k]F | I[x]P | PAH1-4 | HCB | PCB |
| | | | | | | | | | | | | | | | | | | | | | | | | | | |

Recalculations - Carbon monoxide (CO)



The marginal changes in the **National Total** reported for **1990 (-1.22 kt or -0.01 %)** are dominated by a revisions in NFR sub-category **1.A.3.d ii with -1.15 kt**.

However, the strongest percental change occurs for NFR **1.A.4.c iii with minus 52 %**.

Table 1: Changes in emission estimates for 1990

| NFR Sector | Submission 2025 | Submission 2026 | Difference | | Reasoning |
|----------------------------|------------------|------------------|--------------|---------------|--|
| | [kt] | | absolute | relative | |
| NATIONAL TOTAL | 13,320.53 | 13,319.31 | -1.22 | -0.01% | see description and reasoning in: sub-category chapters |
| NFR 1 - Energy | 12,050.69 | 12,049.47 | -1.22 | -0.01% | sub-category chapters |
| 1.A.2.g vii | 73.97 | 73.98 | 0.01 | 0.01% | here |
| 1.A.3.d ii | 21.53 | 20.39 | -1.15 | -5.32% | here |
| 1.A.4.a ii | 6.05 | 6.05 | 0.00 | -0.03% | here |
| 1.A.4.c iii | 0.04 | 0.02 | -0.02 | -51.89% | here |
| 1.A.5.b | 116.99 | 116.93 | -0.06 | -0.05% | here |
| NFR 2 - IPPU | 1,248,77 | 1,248,77 | 0,00 | 0,00% | |
| NFR 3 - Agriculture | NA | | | | |
| NFR 5 - Waste | 21.08 | 21.08 | 0.00 | 0.00% | |
| NFR 6 - Other | NA | | | | |

The far more significant changes in the **National Total** reported for **2023 (-69.7 kt or 2.89 %)** are dominated by revisions within NFR sub-categories **1.A.2.g vii (-43 kt)** and **1.A.4.c ii (-16 kt)**.

In contrast, the most significant percental change occurs for NFR **1.A.4.c iii with minus 47 %**.

Table 2: Changes in emission estimates for 2023

| NFR Sector | Submission 2025 | Submission 2026 | Difference | | Reasoning |
|-----------------------|-----------------|-----------------|---------------|---------------|--|
| | [kt] | | absolute | relative | |
| NATIONAL TOTAL | 2,409.34 | 2,339.64 | -69.70 | -2.89% | see description and reasoning in: sub-category chapters |
| NFR 1 - Energy | 1,709.75 | 1,640.05 | -69.70 | -4.08% | sub-category chapters |
| 1.A.1.a | 81.78 | 81.78 | 0.01 | 0.01% | here |
| 1.A.1.b | 1.45 | 1.54 | 0.09 | 6.17% | here |
| 1.A.1.c | 10.37 | 10.85 | 0.48 | 4.62% | here |
| 1.A.2.a | 30.97 | 30.73 | -0.24 | -0.78% | here |

| | Submission 2025 | Submission 2026 | Difference | | Reasoning |
|----------------------------|-----------------|-----------------|----------------|-----------------|-----------------------------------|
| NFR Sector | [kt] | | | relative | see description and reasoning in: |
| NATIONAL TOTAL | 2,409.34 | 2,339.64 | -69.70 | -2.89% | sub-category chapters |
| NFR 1 - Energy | 1,709.75 | 1,640.05 | -69.70 | -4.08% | sub-category chapters |
| 1.A.2.b | 0.1391 | 0.1388 | -0.0003 | -0.20% | here |
| 1.A.2.e | 0.091 | 0.072 | -0.02 | -20.64% | here |
| 1.A.2.f | 1.04 | 1.00 | -0.04 | -3.95% | here |
| 1.A.2.g vii | 180.53 | 137.46 | <u>-43.07</u> | -23.86% | here |
| 1.A.2.g viii | 15.60 | 15.16 | -0.45 | -2.86% | here |
| 1.A.3.a ii(i) | 1.89 | 1.90 | 0.01 | 0.43% | here |
| 1.A.3.b i | 661.63 | 660.65 | -0.98 | -0.15% | here |
| 1.A.3.b ii | 38.47 | 38.32 | -0.15 | -0.39% | here |
| 1.A.3.b iii | 23.89 | 23.82 | -0.07 | -0.29% | here |
| 1.A.3.b iv | 53.25 | 52.80 | -0.45 | -0.85% | here |
| 1.A.3.c | 1.0962 | 1.0963 | 0.0002 | 0.02% | here |
| 1.A.3.d ii | 6.95 | 6.04 | -0.91 | -13.14% | here |
| 1.A.4.a i | 52.48 | 49.13 | -3.35 | -6.39% | here |
| 1.A.4.a ii | 1.20 | 1.49 | 0.29 | 24.44% | here |
| 1.A.4.b i | 358.50 | 357.39 | -1.11 | -0.31% | here |
| 1.A.4.b ii | 82.65 | 78.65 | -4.00 | -4.84% | here |
| 1.A.4.c i | 15.25 | 15.24 | -0.01 | -0.08% | here |
| 1.A.4.c ii | 73.13 | 57.23 | <u>-15.89</u> | -21.73% | here |
| 1.A.4.c iii | 0.02 | 0.01 | -0.01 | <u>-46.98%</u> | here |
| 1.A.5.a | 1.358 | 1.464 | 0.11 | 7.82% | here |
| 1.A.5.b | 10.471 | 10.561 | 0.09 | 0.86% | here |
| 1.B.2.a iv | 0.322 | 0.321 | -0.001 | -0.26% | |
| 1.B.2.c | 0.096 | 0.095 | -0.001 | -1.09% | |
| NFR 2 - IPPU | 683.7734 | 683.7749 | 0.00150 | 0.00022% | sub-category chapters |
| 2.A.3 | 0.4671 | 0.4669 | -0.00019 | -0.04% | here |
| 2.G | 11.423 | 11.425 | 0.00169 | 0.01% | here |
| NFR 3 - Agriculture | NA | | | | |
| NFR 5 - Waste | 15.82 | 15.82 | 0.00 | 0.00% | |
| NFR 6 - Other | NA | | | | |