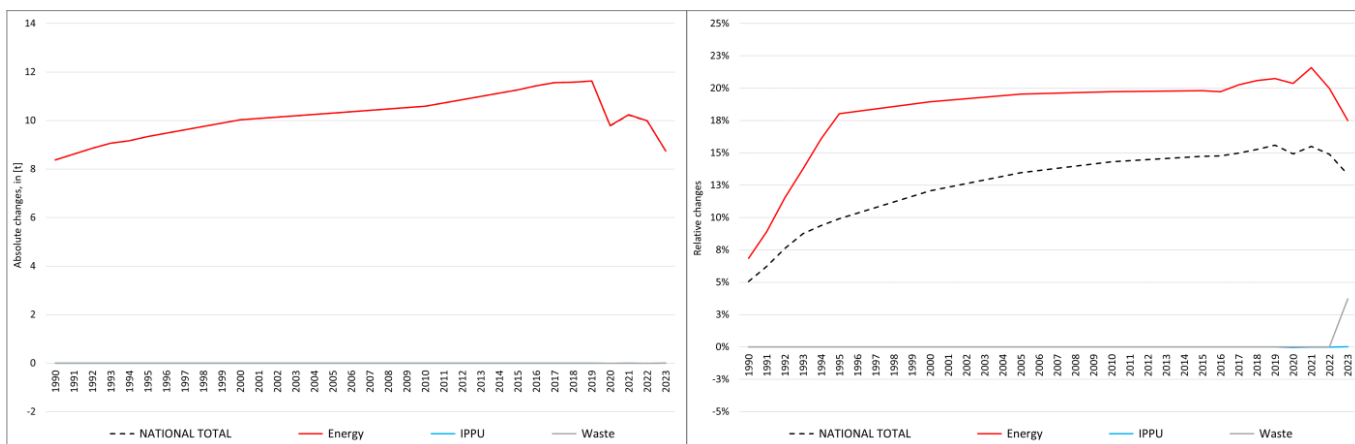


pollutant-specific data:	NOx	NMVOc	SOx	NH3	PM2.5	PM10	TSP	BC	CO	Pb	Cd	Hg	As	Cr	Cu	Ni	Se	Zn	PCDD/F	B[a]P	B[b]F	B[k]F	l[x]P	PAH1-4	HCB	PCB

## Recalculations - Chromium (Cr)



With the marginal changes in NFRs **1.A.2.g vii**, **1.A.4.a ii** and **1.A.4.c ii** canceling each other out, the remarkable changes within the **National Total** reported for **1990 (+8.37 t or +5 %)** result entirely from a revision in **NFR 1.A.3.b vi with +8.37 t**, also resembling the strongest percental change with **+68 %**.

Table 1: Changes of emission estimates for 1990

NFR Sector	Submission 2025	Submission 2026	Difference		Reasoning
	[t]		absolute	relative	
<b>NATIONAL TOTAL</b>	<b>165.69</b>	<b>174.06</b>	<b>8.37</b>	<b>5.05%</b>	<b>see description and reasoning in: sub-category chapters</b>
<b>NFR 1 - Energy</b>	<b>122.29</b>	<b>130.66</b>	<b>8.37</b>	<b>6.85%</b>	<b>sub-category chapters</b>
1.A.2.g vii	0.0067865	0.0067870	0.0000005	0.01%	<a href="#">here</a>
1.A.3.b vi	12.30	20.67	8.37	68.09%	<a href="#">here</a>
1.A.4.a ii	0.0013248	0.0013244	-0.0000004	-0.03%	<a href="#">here</a>
1.A.4.c ii	0.041945	0.041943	-0.000002	-0.005%	<a href="#">here</a>
<b>NFR 2 - IPPU</b>	<b>3.52</b>	<b>3.52</b>	<b>0.00</b>	<b>0.00%</b>	
<b>NFR 3 - Agriculture</b>	<b>NA</b>				
<b>NFR 5 - Waste</b>	<b>0.03</b>	<b>0.03</b>	<b>0.00</b>	<b>0.00%</b>	
<b>NFR 6 - Other</b>	<b>NA</b>				

The significant changes within the **National Total** reported for **2023 (+8.75 t or +13.33 %)** are by far dominated by a revision in NFR sub-category **1.A.3.b vi with +9 t**, also resembling the strongest percental change with **+50 %**.

In addition, emission estimates were revised for a variety of sub-categories throughout NFRs 1, 2 and 5.

Table 2: Changes of emission estimates for 2023

NFR Sector	Submission 2025	Submission 2026	Difference		Reasoning
	[t]		absolute	relative	
<b>NATIONAL TOTAL</b>	<b>65,59</b>	<b>74,34</b>	<b>8,746</b>	<b>13,33%</b>	<b>see description and reasoning in: sub-category chapters</b>
<b>NFR 1 - Energy</b>	<b>49,95</b>	<b>58,69</b>	<b>8,742</b>	<b>17,50%</b>	<b>sub-category chapters</b>
1.A.1.a	3,11	3,11	0,004	0,13%	<a href="#">here</a>
1.A.1.b	1,43	1,45	0,020	1,37%	<a href="#">here</a>
1.A.1.c	0,041	0,047	0,006	13,60%	<a href="#">here</a>
1.A.2.g vii	0,0053	0,0068	0,0015	28,08%	<a href="#">here</a>
1.A.2.g viii	0,18	0,16	-0,02	-9,08%	<a href="#">here</a>
1.A.3.a i(i)	0,000000062	0,000000063	0,000000001	2,34%	<a href="#">here</a>
1.A.3.a ii(i)	0,00000312	0,00000320	0,00000007	2,34%	<a href="#">here</a>

	Submission 2025	Submission 2026	Difference		Reasoning
<b>NFR Sector</b>	<b>[t]</b>			<b>relative</b>	<b>see description and reasoning in:</b>
<b>NATIONAL TOTAL</b>	<b>65,59</b>	<b>74,34</b>	<b>8,746</b>	<b>13,33%</b>	<b>sub-category chapters</b>
<b>NFR 1 - Energy</b>	<b>49,95</b>	<b>58,69</b>	<b>8,742</b>	<b>17,50%</b>	<b>sub-category chapters</b>
1.A.3.b i	0,2155	0,2152	-0,0003	-0,16%	<a href="#">here</a>
1.A.3.b ii	0,0351	0,0347	-0,0004	-1,02%	<a href="#">here</a>
1.A.3.b iii	0,109	0,108	-0,001	-0,79%	<a href="#">here</a>
1.A.3.b iv	0,00240	0,00238	-0,00002	-0,84%	<a href="#">here</a>
1.A.3.b vi	17,92	26,92	<u>9,00</u>	<u>50,19%</u>	<a href="#">here</a>
1.A.3.b vii	1,10	1,03	-0,07	-6,33%	<a href="#">here</a>
1.A.3.d ii	0,025	0,024	-0,001	-4,34%	<a href="#">here</a>
1.A.4.a i	2,41	2,23	-0,18	-7,40%	<a href="#">here</a>
1.A.4.a ii	0,0009	0,0012	0,0003	<u>38,53%</u>	<a href="#">here</a>
1.A.4.b i	2,71	2,70	-0,009	-0,35%	<a href="#">here</a>
1.A.4.b ii	0,0063	0,0060	-0,0003	-4,73%	<a href="#">here</a>
1.A.4.c ii	0,044	0,035	-0,009	-20,10%	<a href="#">here</a>
1.A.5.b	0,000534	0,000528	-0,000006	-1,12%	<a href="#">here</a>
<b>NFR 2 - IPPU</b>	<b>15,616</b>	<b>15,619</b>	<b>0,002922</b>	<b>0,02%</b>	<b>sub-category chapters</b>
2.A.3	0,090	0,090	-0,000502	-0,56%	<a href="#">here</a>
2.G	0,873	0,876	0,003424	0,39%	<a href="#">here</a>
<b>NFR 3 - Agriculture</b>	<b>NA</b>				
<b>NFR 5 - Waste</b>	<b>0,033</b>	<b>0,034</b>	<b>0,001</b>	<b>3,72%</b>	<b>sub-category chapters</b>
5.E	0,033	0,034	0,001	3,72%	<a href="#">here</a>
<b>NFR 6 - Other</b>	<b>NA</b>				