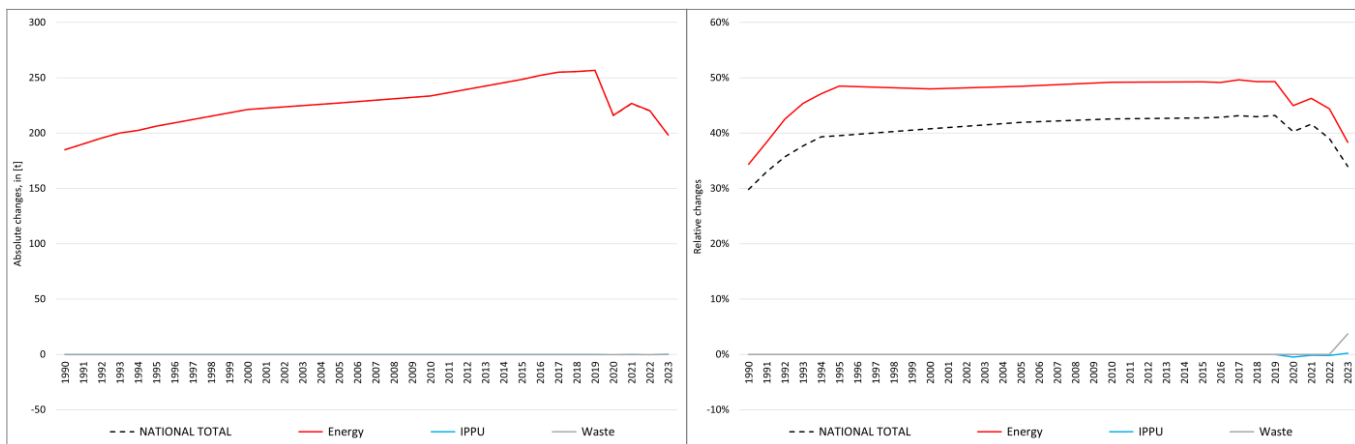


pollutant-specific data:	NOx	NM VOC	SOx	NH3	PM2.5	PM10	TSP	BC	CO	Pb	Cd	Hg	As	Cr	Cu	Ni	Se	Zn	PCDD/F	B[a]P	B[b]F	B[k]F	I[x]P	PAH1-4	HCB	PCB

Recalculations - Copper (Cu)



With the marginal changes in NFRs **1.A.2.g vii**, **1.A.4.a ii** and **1.A.4.c ii** canceling each other out, the fundamental changes within the **National Total** reported for **1990 (+185 t or +30 %)** result entirely from a revision in **NFR 1.A.3.b vi**, also resembling the strongest percental change with **+69 %**.

Table 1: Changes of emission estimates for 1990

NFR Sector	Submission 2025	Submission 2026	Difference		Reasoning
	[t]		absolute	relative	
NATIONAL TOTAL	619.88	804.80	184.92	29.83%	see description and reasoning in: sub-category chapters
NFR 1 - Energy	538.01	722.93	184.92	34.37%	sub-category chapters
1.A.2.g vii	0.0045599	0.0045603	0.0000003	0.01%	here
1.A.3.b vi	269.69	454.60	184.92	68.57%	here
1.A.4.a ii	0.0008884	0.0008881	-0.0000002	-0.03%	here
1.A.4.c ii	1.11506	1.11498	-0.000008	-0.01%	here
NFR 2 - IPPU	3.52	3.52	0.00	0.00%	
NFR 3 - Agriculture		NA			
NFR 5 - Waste	0.03	0.03	0.00	0.00%	
NFR 6 - Other		NA			

The fundamental changes within the **National Total** reported for **2023 (+198.5 t or 34 %)** result almost entirely from a revision in NFR sub-category **1.A.3.b vi (+198.8 t or +50.6 %)**.

In addition, emission estimates were revised for a variety of sub-categories throughout NFRs 1, 2 and 5.

Table 2: Changes of emission estimates for 2023

NFR Sector	Submission 2025	Submission 2026	Difference		Reasoning
	[t]		absolute	relative	
NATIONAL TOTAL	584.30	782.79	198.49	33.97%	see description and reasoning in: sub-category chapters
NFR 1 - Energy	517.19	715.55	198.35	38.35%	sub-category chapters
1.A.1.a	5.526	5.532	0.006	0.11%	here
1.A.1.b	4.38	4.43	0.06	1.31%	here
1.A.1.c	0.05	0.06	0.01	13.58%	here
1.A.2.g vii	0.004	0.005	0.001	27.51%	here
1.A.2.g viii	0.26	0.23	-0.03	-11.27%	here
1.A.3.a i(i)	0.000000044	0.000000045	0.000000001	2.34%	here

	Submission 2025	Submission 2026	Difference		Reasoning
NFR Sector	[t]			relative	see description and reasoning in:
NATIONAL TOTAL	584.30	782.79	198.49	33.97%	sub-category chapters
NFR 1 - Energy	517.19	715.55	198.35	38.35%	sub-category chapters
1.A.3.a ii(i)	0.00000223	0.00000228	0.00000005	2.34%	here
1.A.3.b i	0.1489	0.1487	-0.0002	-0.16%	here
1.A.3.b ii	0.02357	0.02333	-0.00024	-1.02%	here
1.A.3.b iii	0.073	0.072	-0.001	-0.79%	here
1.A.3.b iv	0.00171	0.00170	-0.00001	-0.84%	here
1.A.3.b vi	393.06	591.83	198.77	50.57%	here
1.A.3.b vii	0.037	0.035	-0.002	-6.33%	here
1.A.3.d ii	0.56	0.54	-0.02	-3.10%	here
1.A.4.a i	2.03	1.88	-0.15	-7.41%	here
1.A.4.a ii	0.0006	0.0008	0.0002	38.53%	here
1.A.4.b i	2.24	2.23	-0.01	-0.36%	here
1.A.4.b ii	0.23	0.22	-0.01	-4.72%	here
1.A.4.c i	0.083	0.083	0.000	0.00%	here
1.A.4.c ii	1.11	0.84	-0.27	-24.58%	here
1.A.5.b	0.003032	0.003028	-0.000004	-0.14%	here
NFR 2 - IPPU	67.02497	67.16360	0.13863	0.21%	sub-category chapters
2.A.3	0.05693	0.05676	-0.00018	-0.31%	here
2.G	50.50853	50.64734	0.13881	0.27%	here
NFR 3 - Agriculture	NA				
NFR 5 - Waste	0.08	0.08	0.003	3.72%	sub-category chapters
5.E	0.08	0.08	0.003	3.72%	here
NFR 6 - Other	NA				