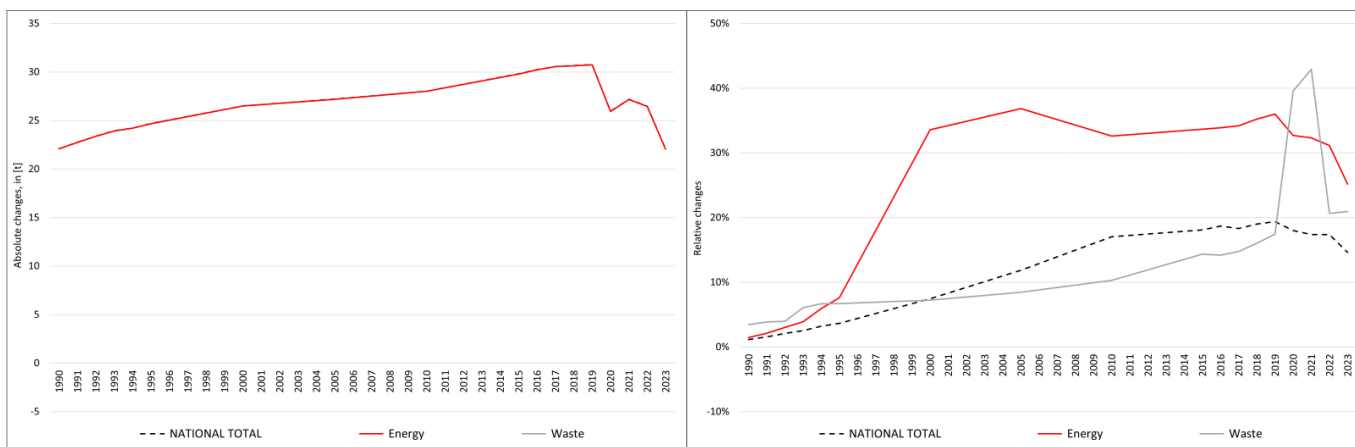


pollutant-specific data:	NOx	NMVOc	SOx	NH3	PM2.5	PM10	TSP	BC	CO	Pb	Cd	Hg	As	Cr	Cu	Ni	Se	Zn	PCDD/F	B[a]P	B[b]F	B[k]F	l[x]P	PAH1-4	HCB	PCB

## Recalculations - Lead (Pb)



The remarkably strong changes in the **National Total** reported for **1990 (+22.1 kt or +1.16 %)** result almost entirely from a revision in NFR sub-category **1.A.3.b vi with +22.09 t**.

However, the by far strongest percental change occurs for NFR **5.C.1.b v with plus 161,190 %**

Table 1: Changes of emission estimates 1990

NFR Sector	Submission 2025	Submission 2026	Difference		Reasoning
	[t]		absolute	relative	
<b>NATIONAL TOTAL</b>	<b>1.899,27</b>	<b>1.921,37</b>	<b>22,10</b>	<b>1,16%</b>	<b>see description and reasoning in: sub-category chapters</b>
<b>NFR 1 - Energy</b>	<b>1.499,08</b>	<b>1.521,17</b>	<b>22,09</b>	<b>1,47%</b>	<b>sub-category chapters</b>
1.A.2.g vii	2,0891	2,0894	0,0003	0,02%	<a href="#">here</a>
1.A.3.b vi	33,05	55,15	22,09	66,84%	<a href="#">here</a>
1.A.4.a ii	0,00007793	0,00007791	-0,00000002	-0,03%	<a href="#">here</a>
1.A.4.c ii	4,5502	4,5499	-0,0003	-0,01%	<a href="#">here</a>
<b>NFR 2 - IPPU</b>	<b>400,05</b>	<b>400,05</b>	<b>0,00</b>	<b>0,00%</b>	
<b>NFR 3 - Agriculture</b>	<b>NA</b>				
<b>NFR 5 - Waste</b>	<b>0,147</b>	<b>0,152</b>	<b>0,005</b>	<b>3,45%</b>	<b>sub-category chapters</b>
5.C.1.b v	0,000003	0,005080	0,005076	161,190%	<a href="#">here</a>
<b>NFR 6 - Other</b>	<b>NA</b>				

The remarkably strong changes in the **National Total** reported for **2023 (+22.1 kt or +14.6 %)** result almost entirely from a revision in NFR sub-category **1.A.3.b vi with +23.7 t**.

However, the by far strongest percental change occurs for NFR **5.C.1.b v with plus 161,190 %**

Table 2: Changes of emission estimates 2023

NFR Sector	Submission 2025	Submission 2026	Difference		Reasoning
	[t]		absolute	relative	
<b>NATIONAL TOTAL</b>	<b>151,08</b>	<b>173,15</b>	<b>22,08</b>	<b>14,61%</b>	<b>see description and reasoning in: sub-category chapters</b>
<b>NFR 1 - Energy</b>	<b>87,61</b>	<b>109,67</b>	<b>22,06</b>	<b>25,18%</b>	<b>sub-category chapters</b>
1.A.1.a	5,59	5,59	0,01	0,14%	<a href="#">here</a>
1.A.1.b	5,66	5,74	0,08	1,45%	<a href="#">here</a>
1.A.1.c	0,069	0,078	0,01	13,57%	<a href="#">here</a>
1.A.2.g vii	0,00048	0,00053	0,00005	9,38%	<a href="#">here</a>
1.A.2.g viii	0,43	0,39	-0,04	-9,11%	<a href="#">here</a>

	Submission 2025	Submission 2026	Difference		Reasoning
<b>NFR Sector</b>	<b>[t]</b>			<b>relative</b>	<b>see description and reasoning in:</b>
<b>NATIONAL TOTAL</b>	<b>151,08</b>	<b>173,15</b>	<b>22,08</b>	<b>14,61%</b>	<b>sub-category chapters</b>
<b>NFR 1 - Energy</b>	<b>87,61</b>	<b>109,67</b>	<b>22,06</b>	<b>25,18%</b>	<b>sub-category chapters</b>
1.A.3.a i(i)	0,00405	0,00415	0,00009	2,34%	<a href="#">here</a>
1.A.3.a ii(i)	0,205	0,209	0,005	2,34%	<a href="#">here</a>
1.A.3.b i	0,0324	0,0323	-0,0001	-0,16%	<a href="#">here</a>
1.A.3.b ii	0,00230	0,00227	-0,00002	-1,02%	<a href="#">here</a>
1.A.3.b iii	0,0064	0,0063	-0,0001	-0,79%	<a href="#">here</a>
1.A.3.b iv	0,00061	0,00060	-0,00001	-0,84%	<a href="#">here</a>
1.A.3.b vi	48,16	71,87	23,70	49,22%	<a href="#">here</a>
1.A.3.b vii	0,062	0,059	-0,004	-6,33%	<a href="#">here</a>
1.A.3.c	0,087013	0,087009	-0,000005	-0,01%	<a href="#">here</a>
1.A.3.d ii	0,037	0,036	-0,001	-1,76%	<a href="#">here</a>
1.A.4.a i	22,98	21,29	-1,69	-7,37%	<a href="#">here</a>
1.A.4.a ii	0,00005	0,00007	0,00002	38,53%	<a href="#">here</a>
1.A.4.b i	4,22	4,21	-0,01	-0,31%	<a href="#">here</a>
1.A.4.b ii	0,00014	0,00013	-0,00001	-4,81%	<a href="#">here</a>
1.A.4.c ii	0,00112	0,00096	-0,00016	-14,09%	<a href="#">here</a>
1.A.5.b	0,000492	0,000491	-0,000001	-0,28%	<a href="#">here</a>
<b>NFR 2 - IPPU</b>	<b>63,3475</b>	<b>63,3448</b>	<b>-0,0027163</b>	<b>-0,004%</b>	<b>sub-category chapters</b>
2.A.3	0,5897	0,5870	-0,0027221	-0,46%	<a href="#">here</a>
2.G	0,0014634	0,0014691	0,0000057	0,39%	<a href="#">here</a>
<b>NFR 3 - Agriculture</b>	<b>NA</b>				
<b>NFR 5 - Waste</b>	<b>0,11376</b>	<b>0,13759</b>	<b>0,02383</b>	<b>20,95%</b>	<b>sub-category chapters</b>
5.C.1.b v	0,00001	0,02344	0,02343	161,190%	<a href="#">here</a>
5.E	0,01070	0,01110	0,00040	3,72%	<a href="#">here</a>
<b>NFR 6 - Other</b>	<b>NA</b>				