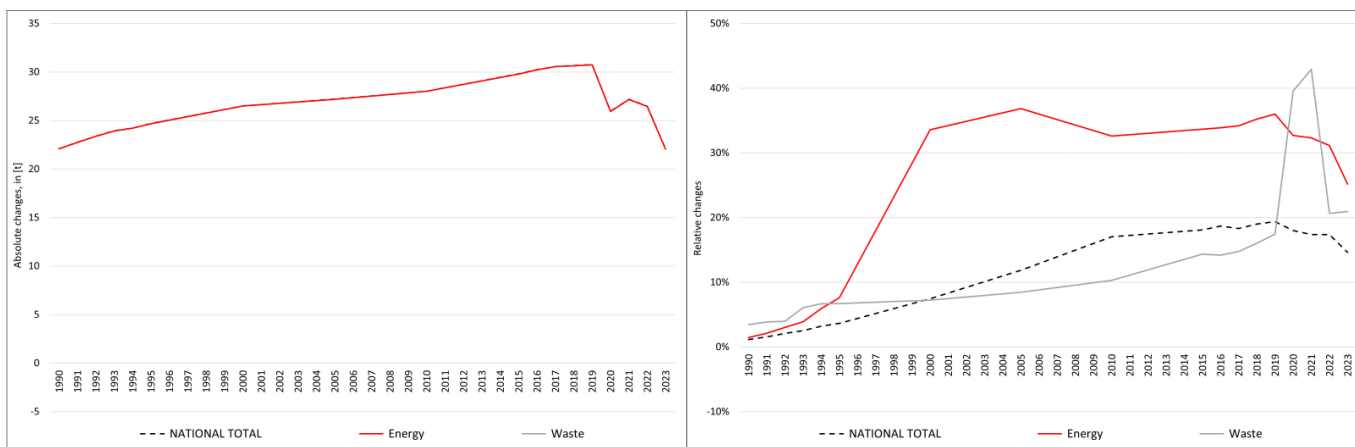


pollutant-specific data:	NOx	NMVOc	SOx	NH3	PM2.5	PM10	TSP	BC	CO	Pb	Cd	Hg	As	Cr	Cu	Ni	Se	Zn	PCDD/F	B[a]P	B[b]F	B[k]F	l[x]P	PAH1-4	HCB	PCB

# Recalculations - Lead (Pb)



The remarkably strong changes in the **National Total** reported for **1990 (+22.1 kt or +1.16 %)** result almost entirely from a revision in NFR sub-category **1.A.3.b vi with +22.09 t**.

However, the by far strongest percental change occurs for NFR **5.C.1.b v with plus 161,190 %**

Table 1: Changes of emission estimates 1990

NFR Sector	Submission 2025	Submission 2026	Difference		Reasoning
	[t]		absolute	relative	
<b>NATIONAL TOTAL</b>	<b>1,899.27</b>	<b>1,921.37</b>	<b>22.10</b>	<b>1.16%</b>	<b>see description and reasoning in: sub-category chapters</b>
<b>NFR 1 - Energy</b>	<b>1,499.08</b>	<b>1,521.17</b>	<b>22.09</b>	<b>1.47%</b>	<b>sub-category chapters</b>
1.A.2.g vii	2.0891	2.0894	0.0003	0.02%	<a href="#">here</a>
1.A.3.b vi	33.05	55.15	22.09	66.84%	<a href="#">here</a>
1.A.4.a ii	0.00007793	0.00007791	-0.00000002	-0.03%	<a href="#">here</a>
1.A.4.c ii	4.5502	4.5499	-0.0003	-0.01%	<a href="#">here</a>
<b>NFR 2 - IPPU</b>	<b>400.05</b>	<b>400.05</b>	<b>0.00</b>	<b>0.00%</b>	
<b>NFR 3 - Agriculture</b>	<b>NA</b>				
<b>NFR 5 - Waste</b>	<b>0.147</b>	<b>0.152</b>	<b>0.005</b>	<b>3.45%</b>	<b>sub-category chapters</b>
5.C.1.b v	0.000003	0.005080	0.005076	161,190%	<a href="#">here</a>
<b>NFR 6 - Other</b>	<b>NA</b>				

The remarkably strong changes in the **National Total** reported for **2023 (+22.1 kt or +14.6 %)** result almost entirely from a revision in NFR sub-category **1.A.3.b vi with +23.7 t**.

However, the by far strongest percental change occurs for NFR **5.C.1.b v with plus 161,190 %**

Table 2: Changes of emission estimates 2023

NFR Sector	Submission 2025	Submission 2026	Difference		Reasoning
	[t]		absolute	relative	
<b>NATIONAL TOTAL</b>	<b>151.08</b>	<b>173.15</b>	<b>22.08</b>	<b>14.61%</b>	<b>see description and reasoning in: sub-category chapters</b>
<b>NFR 1 - Energy</b>	<b>87.61</b>	<b>109.67</b>	<b>22.06</b>	<b>25.18%</b>	<b>sub-category chapters</b>
1.A.1.a	5.59	5.59	0.01	0.14%	<a href="#">here</a>
1.A.1.b	5.66	5.74	0.08	1.45%	<a href="#">here</a>
1.A.1.c	0.069	0.078	0.01	13.57%	<a href="#">here</a>
1.A.2.g vii	0.00048	0.00053	0.00005	9.38%	<a href="#">here</a>
1.A.2.g viii	0.43	0.39	-0.04	-9.11%	<a href="#">here</a>

	Submission 2025	Submission 2026	Difference		Reasoning
<b>NFR Sector</b>	<b>[t]</b>			<b>relative</b>	<b>see description and reasoning in:</b>
<b>NATIONAL TOTAL</b>	<b>151.08</b>	<b>173.15</b>	<b>22.08</b>	<b>14.61%</b>	<b>sub-category chapters</b>
<b>NFR 1 - Energy</b>	<b>87.61</b>	<b>109.67</b>	<b>22.06</b>	<b>25.18%</b>	<b>sub-category chapters</b>
1.A.3.a i(i)	0.00405	0.00415	0.00009	2.34%	<a href="#">here</a>
1.A.3.a ii(i)	0.205	0.209	0.005	2.34%	<a href="#">here</a>
1.A.3.b i	0.0324	0.0323	-0.0001	-0.16%	<a href="#">here</a>
1.A.3.b ii	0.00230	0.00227	-0.00002	-1.02%	<a href="#">here</a>
1.A.3.b iii	0.0064	0.0063	-0.0001	-0.79%	<a href="#">here</a>
1.A.3.b iv	0.00061	0.00060	-0.00001	-0.84%	<a href="#">here</a>
1.A.3.b vi	48.16	71.87	23.70	49.22%	<a href="#">here</a>
1.A.3.b vii	0.062	0.059	-0.004	-6.33%	<a href="#">here</a>
1.A.3.c	0.087013	0.087009	-0.000005	-0.01%	<a href="#">here</a>
1.A.3.d ii	0.037	0.036	-0.001	-1.76%	<a href="#">here</a>
1.A.4.a i	22.98	21.29	-1.69	-7.37%	<a href="#">here</a>
1.A.4.a ii	0.00005	0.00007	0.00002	38.53%	<a href="#">here</a>
1.A.4.b i	4.22	4.21	-0.01	-0.31%	<a href="#">here</a>
1.A.4.b ii	0.00014	0.00013	-0.00001	-4.81%	<a href="#">here</a>
1.A.4.c ii	0.00112	0.00096	-0.00016	-14.09%	<a href="#">here</a>
1.A.5.b	0.000492	0.000491	-0.000001	-0.28%	<a href="#">here</a>
<b>NFR 2 - IPPU</b>	<b>63.3475</b>	<b>63.3448</b>	<b>-0.0027163</b>	<b>-0.004%</b>	<b>sub-category chapters</b>
2.A.3	0.5897	0.5870	-0.0027221	-0.46%	<a href="#">here</a>
2.G	0.0014634	0.0014691	0.0000057	0.39%	<a href="#">here</a>
<b>NFR 3 - Agriculture</b>	<b>NA</b>				
<b>NFR 5 - Waste</b>	<b>0.11376</b>	<b>0.13759</b>	<b>0.02383</b>	<b>20.95%</b>	<b>sub-category chapters</b>
5.C.1.b v	0.00001	0.02344	0.02343	161.190%	<a href="#">here</a>
5.E	0.01070	0.01110	0.00040	3.72%	<a href="#">here</a>
<b>NFR 6 - Other</b>	<b>NA</b>				