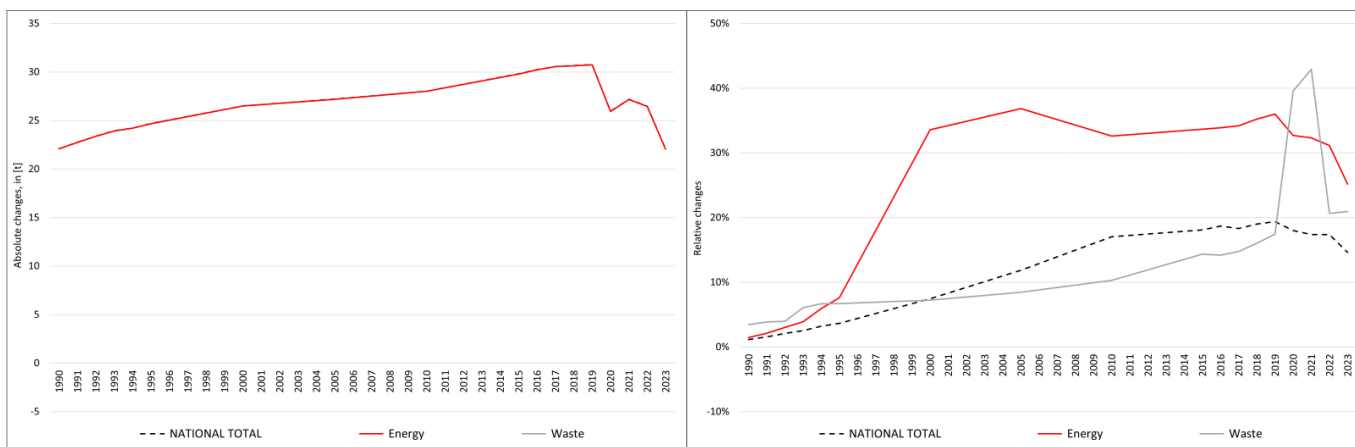


pollutant-specific data:	NOx	NMVOc	SOx	NH3	PM2.5	PM10	TSP	BC	CO	Pb	Cd	Hg	As	Cr	Cu	Ni	Se	Zn	PCDD/F	B[a]P	B[b]F	B[k]F	l[x]P	PAH1-4	HCB	PCB

Recalculations - Lead (Pb)



The remarkably strong changes in the **National Total** reported for **1990 (+22.1 kt or +1.16 %)** result almost entirely from a revision in NFR sub-category **1.A.3.b vi with +22.09 t**.

However, the by far strongest percental change occurs for NFR **5.C.1.b v with plus 161,190 %**

Table 1: Changes of emission estimates 1990

	Submission 2025	Submission 2026	Difference		Reasoning
NFR Sector	[t]			relative	see description and reasoning in:
NATIONAL TOTAL	1,899.27	1,921.37	22.10	1.16%	sub-category chapters
NFR 1 - Energy	1,499.08	1,521.17	22.09	1.47%	sub-category chapters
1.A.2.g vii	2.0891	2.0894	0.0003	0.02%	here
1.A.3.b vi	33.05	55.15	22.09	66.84%	here
1.A.4.a ii	0.00007793	0.00007791	-0.00000002	-0.03%	here
1.A.4.c ii	4.5502	4.5499	-0.0003	-0.01%	here
NFR 2 - IPPU	400.05	400.05	0.00	0.00%	
NFR 3 - Agriculture	NA				
NFR 5 - Waste	0.147	0.152	0.005	3.45%	sub-category chapters
5.C.1.b v	0.000003	0.005080	0.005076	161,190%	here
NFR 6 - Other	NA				

The remarkably strong changes in the **National Total** reported for **2023 (+22.1 kt or +14.6 %)** result almost entirely from a revision in NFR sub-category **1.A.3.b vi with +23.7 t**.

However, the by far strongest percental change occurs for NFR **5.C.1.b v with plus 161,190 %**

Table 2: Changes of emission estimates 2023

	Submission 2025	Submission 2026	Difference		Reasoning
NFR Sector	[t]			relative	see description and reasoning in:
NATIONAL TOTAL	151.08	173.15	22.08	14.61%	sub-category chapters
NFR 1 - Energy	87.61	109.67	22.06	25.18%	sub-category chapters
1.A.1.a	5.59	5.59	0.01	0.14%	here
1.A.1.b	5.66	5.74	0.08	1.45%	here
1.A.1.c	0.069	0.078	0.01	13.57%	here
1.A.2.g vii	0.00048	0.00053	0.00005	9.38%	here

	Submission 2025	Submission 2026	Difference		Reasoning
NFR Sector	[t]			relative	see description and reasoning in:
NATIONAL TOTAL	151.08	173.15	22.08	14.61%	sub-category chapters
NFR 1 - Energy	87.61	109.67	22.06	25.18%	sub-category chapters
1.A.2.g viii	0.43	0.39	-0.04	-9.11%	here
1.A.3.a i(i)	0.00405	0.00415	0.00009	2.34%	here
1.A.3.a ii(i)	0.205	0.209	0.005	2.34%	here
1.A.3.b i	0.0324	0.0323	-0.0001	-0.16%	here
1.A.3.b ii	0.00230	0.00227	-0.00002	-1.02%	here
1.A.3.b iii	0.0064	0.0063	-0.0001	-0.79%	here
1.A.3.b iv	0.00061	0.00060	-0.00001	-0.84%	here
1.A.3.b vi	48.16	71.87	23.70	49.22%	here
1.A.3.b vii	0.062	0.059	-0.004	-6.33%	here
1.A.3.c	0.087013	0.087009	-0.000005	-0.01%	here
1.A.3.d ii	0.037	0.036	-0.001	-1.76%	here
1.A.4.a i	22.98	21.29	-1.69	-7.37%	here
1.A.4.a ii	0.00005	0.00007	0.00002	38.53%	here
1.A.4.b i	4.22	4.21	-0.01	-0.31%	here
1.A.4.b ii	0.00014	0.00013	-0.00001	-4.81%	here
1.A.4.c ii	0.00112	0.00096	-0.00016	-14.09%	here
1.A.5.b	0.000492	0.000491	-0.000001	-0.28%	here
NFR 2 - IPPU	63.3475	63.3448	-0.0027163	-0.004%	sub-category chapters
2.A.3	0.5897	0.5870	-0.0027221	-0.46%	here
2.G	0.0014634	0.0014691	0.0000057	0.39%	here
NFR 3 - Agriculture	NA				
NFR 5 - Waste	0.11376	0.13759	0.02383	20.95%	sub-category chapters
5.C.1.b v	0.00001	0.02344	0.02343	161,190%	here
5.E	0.01070	0.01110	0.00040	3.72%	here
NFR 6 - Other	NA				