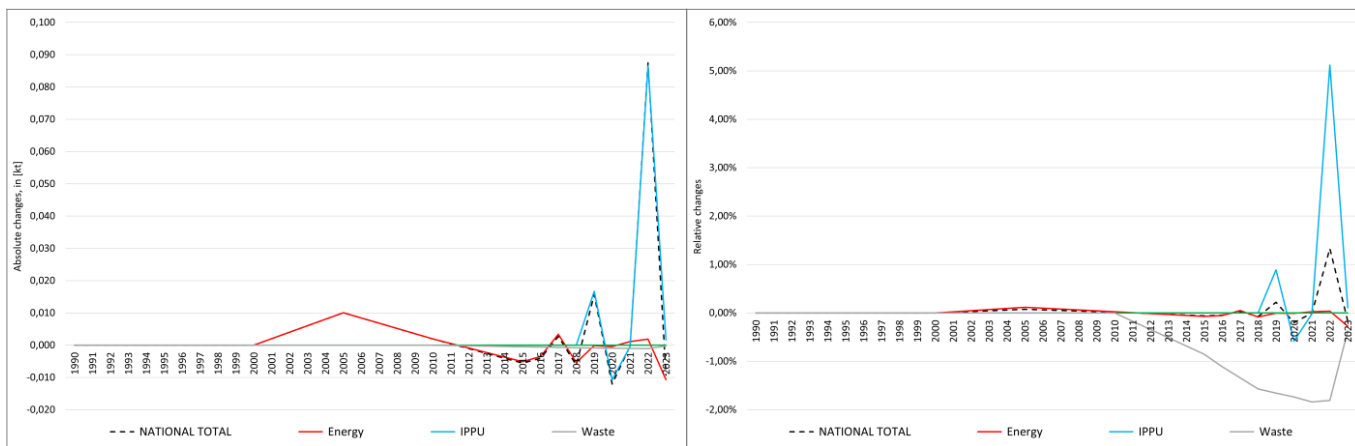


pollutant-specific data:	NOx	NM VOC	SOx	NH3	PM2.5	PM10	TSP	BC	CO	Pb	Cd	Hg	As	Cr	Cu	Ni	Se	Zn	PCDD/F	B[a]P	B[b]F	B[k]F	I[x]P	PAH1-4	HCB	PCB
--------------------------	-----	--------	-----	-----	-------	------	-----	----	----	----	----	----	----	----	----	----	----	----	--------	-------	-------	-------	-------	--------	-----	-----

Recalculations - Mercury (Hg)



With no reportable changes within the **National Total** reported for **1990**, the only notable but canceling changes occur for NFRs **1.A.2.g vii**, **1.A.4.a ii** and **1.A.4.c ii**.

Table 1: Changes of emission estimates 1990

NFR Sector	Submission 2025	Submission 2026	Difference		Reasoning
	[t]			relative	
NATIONAL TOTAL	35.53	35.53	0.00	0.00%	see description and reasoning in: sub-category chapters
NFR 1 - Energy	26.46	26.46	0.00	0.00%	sub-category chapters
1.A.2.g vii	0.0043872	0.0043875	0.0000003	0.01%	here
1.A.4.a ii	0.0008260	0.0008258	-0.0000002	-0.03%	here
1.A.4.c ii	0.0094791	0.0094790	-0.0000001	-0.001%	here
NFR 2 - IPPU	9.03	9.03	0.00	0.00%	
NFR 3 - Agriculture		NA			
NFR 5 - Waste	0.03	0.03	0.00	0.00%	
NFR 6 - Other		NA			

The small changes within the **National Total** reported for **2023 (-0.009 t or -0.17 %)** result from a **variety of revisions throughout NFRs 1, 2 and 5**.

The most significant percental change occurs in **NFR 1.A.4.a ii with plus 38.5 %**.

Table 2: Changes of emission estimates 2023

NFR Sector	Submission 2025	Submission 2026	Difference		Reasoning
	[t]			relative	
NATIONAL TOTAL	5.430	5.421	-0.009	-0.17%	see description and reasoning in: sub-category chapters
NFR 1 - Energy	3.89	3.88	-0.011	-0.27%	sub-category chapters
1.A.1.a	2.65	2.65	0.002	0.08%	here
1.A.1.b	0.2263	0.2265	0.0002	0.09%	here
1.A.1.c	0.091	0.100	0.010	10.55%	here
1.A.2.g vii	0.0039	0.0047	0.0008	19.25%	here
1.A.2.g viii	0.24	0.22	-0.02	-7.93%	here
1.A.3.a i(i)	0.000000085	0.000000087	0.000000002	2.34%	here
1.A.3.a ii(i)	0.0000043	0.0000044	0.0000001	2.34%	here
1.A.3.b i	0.2110	0.2107	-0.0003	-0.16%	here

	Submission 2025	Submission 2026	Difference		Reasoning
NFR Sector	[t]			relative	see description and reasoning in:
NATIONAL TOTAL	5.430	5.421	-0.009	-0.17%	sub-category chapters
NFR 1 - Energy	3.89	3.88	-0.011	-0.27%	sub-category chapters
1.A.3.b ii	0.0228	0.0226	-0.0002	-1.02%	here
1.A.3.b iii	0.0678	0.0673	-0.001	-0.79%	here
1.A.3.b iv	0.00332	0.00329	-0.00003	-0.84%	here
1.A.3.d ii	0.00687	0.00680	-0.00007	-0.99%	here
1.A.4.a i	0.0576	0.0542	-0.003	-5.87%	here
1.A.4.a ii	0.0005	0.0007	0.0002	38.53%	here
1.A.4.b i	0.2667	0.2663	-0.0003	-0.12%	here
1.A.4.b ii	0.00070	0.00067	-0.00003	-4.82%	here
1.A.4.c ii	0.0108	0.0094	-0.0014	-13.05%	here
1.A.5.a	0.00053	0.00056	0.00003	5.07%	here
1.A.5.b	0.00057	0.00056	-0.00001	-1.37%	here
1.B.1.b	0.013	0.015	0.002	15.38%	here
1.B.2.a i	0.00188	0.00190	0.00002	1.01%	
NFR 2 - IPPU	1.483564	1.485167	0.001603	0.11%	sub-category chapters
2.A.2	0.012788	0.012791	0.000003	0.02%	here
2.B.10.a	0.026400	0.028000	0.001600	6.06%	here
NFR 3 - Agriculture	NA				
NFR 5 - Waste	0.0567	0.0565	-0.0002	-0.37%	sub-category chapters
5.C.1.b v	0.0351	0.0341	-0.0010	-2.89%	here
5.E	0.0216	0.0224	0.0008	3.72%	here
NFR 6 - Other	NA				