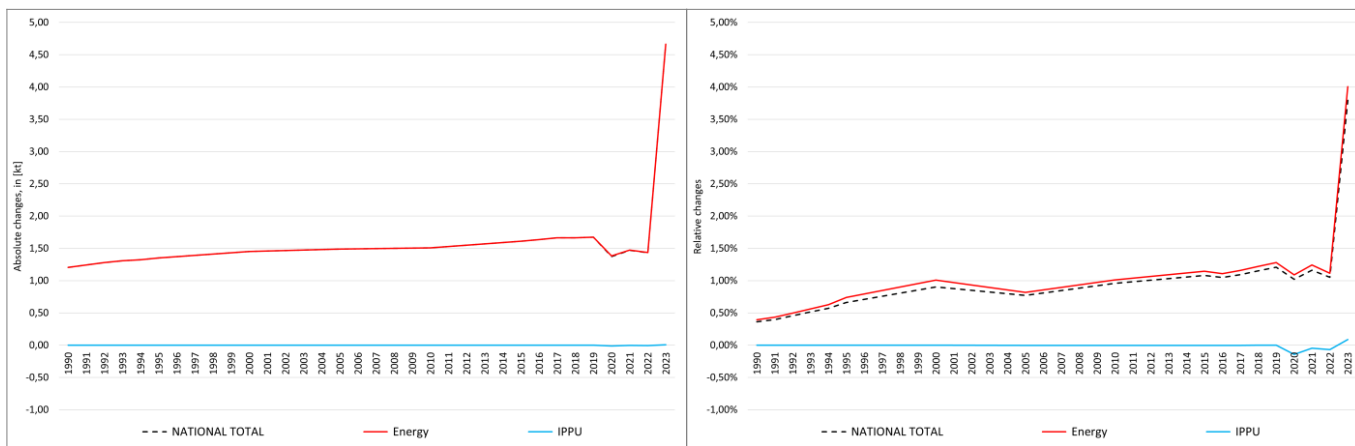


pollutant-specific data:	NOx	NM VOC	SOx	NH3	PM2.5	PM10	TSP	BC	CO	Pb	Cd	Hg	As	Cr	Cu	Ni	Se	Zn	PCDD/F	B[a]P	B[b]F	B[k]F	I[x]P	PAH1-4	HCB	PCB

Recalculations - Nickel (Ni)



With the marginal changes in NFRs **1.A.2.g vii**, **1.A.4.a ii** and **1.A.4.c ii** canceling each other out, the small changes within the **National Total** reported for **1990 (+1.21 t or +0.36 %)** result entirely from a revision in **NFR 1.A.3.b vi**, also resembling the strongest percental change with **+63 %**.

Table 1: Changes of emission estimates for 1990

NFR Sector	Submission 2025	Submission 2026	Difference		Reasoning
	[t]			relative	see description and reasoning in:
NATIONAL TOTAL	332.75	333.95	1.21	0.36%	sub-category chapters
NFR 1 - Energy	305.13	306.34	1.21	0.40%	sub-category chapters
1.A.2.g vii	0.00022985	0.00022988	0.00000002	0.01%	here
1.A.3.b vi	1.91	3.12	1.21	63.03%	here
1.A.4.a ii	0.00003117	0.00003116	-0.00000001	-0.03%	here
1.A.4.c ii	0.045797	0.045794	-0.000003	-0.01%	here
NFR 2 - IPPU	3.52	3.52	0.00	0.00%	
NFR 3 - Agriculture		NA			
NFR 5 - Waste	0.03	0.03	0.00	0.00%	
NFR 6 - Other		NA			

The remarkable changes within the **National Total** reported for **2023 (+4.67 t or +3.79 %)** are dominated by a revision in NFR sub-category **1.A.3.b vi with +1.29 t (+46.2 %)** together with a variety of smaller revisions throughout NFRs 1 and 2.

Table 2: Changes of emission estimates for 2023

NFR Sector	Submission 2025	Submission 2026	Difference		Reasoning
	[t]			relative	see description and reasoning in:
NATIONAL TOTAL	123.07	127.74	4.67	3.79%	sub-category chapters
NFR 1 - Energy	116.43	121.10	4.66	4.00%	sub-category chapters
1.A.1.a	2.757	2.761	0.004	0.15%	here
1.A.1.b	66.5	70.0	3.52	5.29%	here
1.A.1.c	0.0267	0.0304	0.0036	13.55%	here
1.A.2.g vii	0.00042	0.00038	-0.00004	-9.18%	here
1.A.2.g viii	1.76	1.69	-0.07	-3.93%	here
1.A.3.a i(i)	0.000000226	0.000000231	0.000000005	2.34%	here
1.A.3.a ii(i)	0.00000114	0.00000117	0.00000003	2.34%	here

	Submission 2025	Submission 2026	Difference		Reasoning
NFR Sector		[t]		relative	see description and reasoning in:
NATIONAL TOTAL	123.07	127.74	4.67	3.79%	sub-category chapters
NFR 1 - Energy	116.43	121.10	4.66	4.00%	sub-category chapters
1.A.3.b i	0.03965	0.03958	-0.00007	-0.16%	here
1.A.3.b ii	0.00125	0.00124	-0.00001	-1.02%	here
1.A.3.b iii	0.00258	0.00256	-0.00002	-0.79%	here
1.A.3.b iv	0.000876	0.000869	-0.000007	-0.84%	here
1.A.3.b vi	2.79	4.08	<u>1.29</u>	<u>46.22%</u>	here
1.A.3.b vii	0.58	0.54	-0.04	-6.33%	here
1.A.3.d ii	0.39	0.36	-0.03	-7.07%	here
1.A.4.a i	0.060	0.057	-0.004	-6.22%	here
1.A.4.a ii	0.000020	0.000028	0.000008	38.53%	here
1.A.4.b i	0.4356	0.4343	-0.0013	-0.29%	here
1.A.4.b ii	0.0097	0.0093	-0.0005	-4.72%	here
1.A.4.c ii	0.046	0.034	-0.011	-24.59%	here
1.A.5.b	0.003259	0.003257	-0.000002	-0.06%	here
NFR 2 - IPPU	6.639079	6.644912	0.005833	0.09%	sub-category chapters
2.A.3	0.037146	0.037252	0.000106	0.29%	here
2.G	1.717740	1.723467	0.005727	0.33%	here
NFR 3 - Agriculture		NA			
NFR 5 - Waste		NA			
NFR 6 - Other		NA			