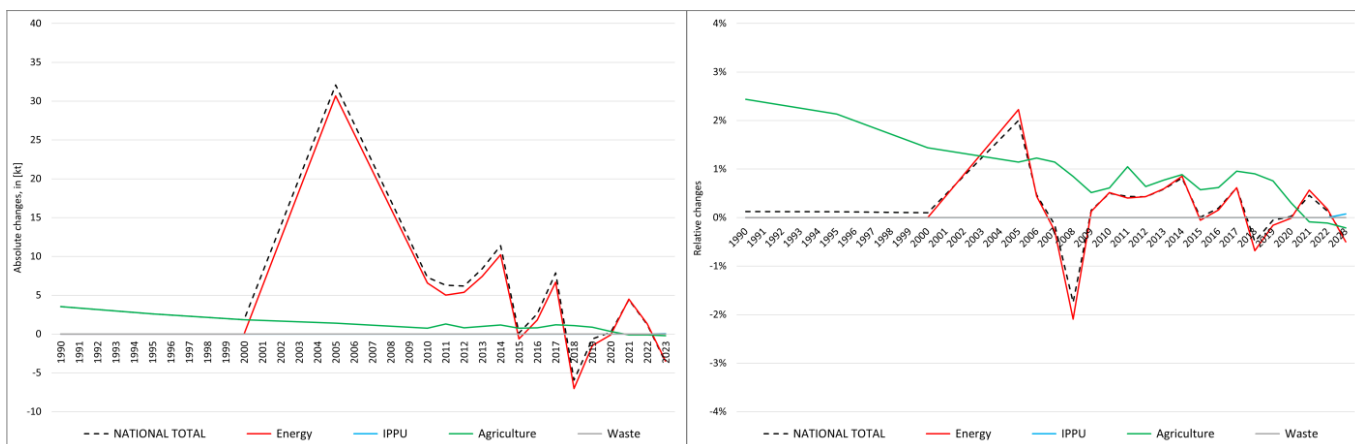


pollutant-specific data:	NOx	NM VOC	SOx	NH3	PM2.5	PM10	TSP	BC	CO	Pb	Cd	Hg	As	Cr	Cu	Ni	Se	Zn	PCDD/F	B[a]P	B[b]F	B[k]F	l[x]P	PAH1-4	HCB	PCB

Recalculations - Nitrogen Oxides



The marginal changes within the **National Total** reported for **1990 (+3.54 kt or +0.12 %)** result from changes in **NFR 3 (+3.54 kt or +2.44 %)**. Additional but antagonistic changes in NFRs 1.A.2.g vii and 1.A.4.c ii do not affect the National Total.

The most significant percental change occurs for **NFR 3.B.1.a with plus 16.2 %**.

Table 1: Changes of emission estimates 1990

NFR Sector	Submission 2025	Submission 2026	Difference		Reasoning
	[kt]		absolute	relative	
NATIONAL TOTAL	2.846,04	2.849,57	3,54	0,12%	see description and reasoning in: sub-category chapters
NFR 1 - Energy	2.599,34	2.599,34	0,00	0,00%	sub-category chapters
1.A.2.g vii	34,654	34,657	0,003	0,01%	here
1.A.4.a ii	10,439	10,437	-0,002	-0,02%	here
NFR 2 - IPPU	100,73	100,73	0,00	0,00%	
NFR 3 - Agriculture	145,23	148,77	3,54	2,44%	sub-category chapters
3.B.1.a	0,89	1,04	0,14	16,16%	here
3.B.3	0,36	0,35	-0,01	-2,68%	here
3.D.a.2.a	45,94	48,75	2,81	6,11%	here
3.D.a.3	8,84	9,44	0,59	6,73%	here
NFR 5 - Waste	0,74	0,74	0,00	0,00%	
NFR 6 - Other	NA				

The small changes within the **National Total** reported for **2023 (-3.65 kt or -0.43 %)** are dominated by **revisions throughout NFR 1** with the most significant *absolute* change occurring for **NFR 1.A.4.c ii with minus 4.58 kt** together with less significant revisions **throughout NFRs 2 and 3**.

Here, the most significant *percental* change occurs for **NFR 1.A.2.g vii with plus 34.4 %**.

Table 2: Changes of emission estimates 2023

NFR Sector	Submission 2025	Submission 2026	Difference		Reasoning
	[kt]		absolute	relative	
NATIONAL TOTAL	844.88	841.23	-3.65	-0.43%	see description and reasoning in: sub-category chapters
NFR 1 - Energy	695.05	691.57	-3.48	-0.50%	sub-category chapters
1.A.1.a	168.11	169.59	1.48	0.88%	here

	Submission 2025	Submission 2026	Difference		Reasoning
NFR Sector	[kt]		relative	see description and reasoning in:	
NATIONAL TOTAL	844.88	841.23	-3.65	-0.43%	sub-category chapters
NFR 1 - Energy	695.05	691.57	-3.48	-0.50%	sub-category chapters
1.A.1.b	14.34	14.24	-0.10	-0.69%	here
1.A.1.c	10.84	11.58	0.74	6.79%	here
1.A.2.a	3.86	3.90	0.04	0.93%	here
1.A.2.b	0.944	0.939	-0.004	-0.47%	here
1.A.2.e	0.23	0.19	-0.05	-19.84%	here
1.A.2.g vii	5.15	6.92	1.77	34.37%	here
1.A.2.g viii	59.41	58.18	-1.24	-2.08%	here
1.A.3.b i	169.24	169.07	-0.16	-0.10%	here
1.A.3.b ii	41.34	40.92	-0.42	-1.02%	here
1.A.3.b iii	59.99	59.53	-0.47	-0.78%	here
1.A.3.b iv	1.18	1.17	-0.01	-0.85%	here
1.A.3.c	7.358	7.360	0.002	0.03%	here
1.A.3.d ii	19.69	19.20	-0.49	-2.49%	here
1.A.4.a i	17.74	17.00	-0.74	-4.16%	here
1.A.4.a ii	5.45	5.95	0.51	9.29%	here
1.A.4.b i	53.69	53.84	0.14	0.27%	here
1.A.4.b ii	0.40	0.38	-0.02	-4.81%	here
1.A.4.c i	7.575	7.578	0.003	0.04%	here
1.A.4.c ii	32.43	27.85	-4.58	-14.13%	here
1.A.5.a	0.248	0.252	0.004	1.52%	here
1.A.5.b	2.80	2.88	0.07	2.59%	here
1.B.1.b	0.23	0.29	0.05	23.38%	here
1.B.2.a iv	0.652	0.651	-0.002	-0.26%	
1.B.2.c	0.306	0.303	-0.003	-1.04%	
NFR 2 - IPPU	49.23	49.27	0.04	0.07%	sub-category chapters
2.A.3	9.91	9.95	0.03	0.33%	here
2.C.1	18.520	18.522	0.003	0.02%	here
2.G	0.18754	0.18757	0.00003	0.01%	here
NFR 3 - Agriculture	99.51	99.30	-0.21	-0.21%	sub-category chapters
3.B.1.a	0.545	0.520	-0.02	-4.54%	here
3.B.1.b	0.558	0.556	-0.003	-0.47%	here
3.B.3	0.22	0.21	-0.01	-6.09%	here
3.B.4.e	0.23	0.27	0.04	15.85%	here
3.B.4.g i	0.017	0.013	-0.004	-24.25%	here
3.B.4.g ii	0.013	0.010	-0.003	-23.09%	here
3.B.4.g iii	0.007	0.005	-0.002	-25.27%	here
3.B.4.g iv	0.0020	0.0016	-0.0004	-18.73%	here
3.D.a.1	40.89	41.31	0.41	1.01%	here
3.D.a.2.a	36.65	36.44	-0.21	-0.58%	here
3.D.a.2.b	0.476	0.410	-0.07	-13.84%	here
3.D.a.2.c	14.61	14.27	-0.34	-2.31%	here
3.D.a.3	5.17	5.19	0.03	0.52%	here
3.I	0.09	0.07	-0.02	-23.60%	here
NFR 5 - Waste	1.09	1.09	0.00	0.00%	
NFR 6 - Other		NA			